



# PC Update

The Newsletter of  
Melbourne PC User Group Inc.

April 2015 Volume 32 Issue 3

Published by  
Melbourne PC User Group Inc.  
Suite 26, Level 1, 479 Warrigal Road  
Moorabbin, VIC 3189  
Office hours 9am-5pm  
Phone (03) 9276 4000  
Email <mailto:office@melbpc.org.au>  
Office Manager Dianne Vogt  
Junior Staff Lauren George  
Amber Scarff

ABN: 43 196 519 351  
Victorian Association Registration  
# A0003293V

PC Update Newsletter  
Editor Gary Taig  
<mailto:editorpc@melbpc.org.au>

Map & Calendars: John Swann

Unable to attend the Monthly  
Meeting on Wednesday evening?

Tune in here at 7.00pm and view it  
live over the Internet.

Test Transmission usually commences at around 6.15pm

<http://tv.mpcug.mobi>

Or, you can always download the  
video later, or purchase a DVD from  
the office.

<mailto:office@melbpc.org.au>

## Management Committee

President	Harry Lewis
Vice President	Roger Wragg
Secretary	Geoffrey Keenan
Treasurer	Jay Boag
Committee:	John Bade
	John Hollow
	Philip Lew
	Don McKenzie
	Gary Taig

## Contents

President's Report	2
Rules — Notice of Revision	3
<b>Ad:</b> PLE Computers, Computer Checkup	4
Editorial	5
Linux on a Small Screen	7
Printed Newsletter Subscription	9
Monthly Meeting Details	11
Random Access	12
Statement of Purposes	13
Special Interest Group Section	14
Major Raffle Winners	22
Gaming, Training, Conference Hire	23
Application for Mobile Broadband	24
Membership Application	26
April Raffle Details	27
April Events & Meetings Calendar	28

Copyright © 2015 Melbourne PC User Group Inc. and individual authors. Except where otherwise stated, all material is the copyright of the author. Contributions from authors may not be copied without the author's prior written permission.

# President's Report



Harry Lewis

These are interesting times in the world of computer operating systems. Various flavours of Windows still have the majority share of our members' desktops and laptop screens, but our evidence suggests that Android and iOS are the dominant systems on members' mobile devices (and that many, perhaps most, of our members have such a device, whether smartphone, tablet, or both).

After the limited success of Windows 8, Microsoft seems to be hastening to release its successor, Windows 10. So what happened to Windows 9? I'm afraid they say: Windows 7 8 9. On a more serious note, they say that moving to '10' marked a cleaner break, but also avoided any possible confusion between the newest Windows and earlier versions whose numbers began with 9 (95 and 98). *"It appears that many Windows app developers have in their apps a line of code that checks for the Windows version the user is running, and that code uses a 'Windows 9' shortcut to detect whether the computer is on Windows 95 or Windows 98. Apparently, those developers never imagined that Microsoft could release a different Windows 9 version in the future, and that particular shortcut might cause enough problems for Microsoft to simply skip a beat."* (From bgr.com)

Current predictions are that Windows 10 will be released to users in the northern summer, inside three years since the launch of Windows 8 in October 2012. This will be a quicker release than any other this century, apart from that of Windows 7 after Vista.

Recently I spoke with a member who was intent on staying with Windows XP and even its Internet Explorer. He is waiting for Windows 10 to arrive, when he expects to buy a new computer. Such a purchase seems right for members still using XP, not least because the signs are that Windows 10 will be free at first — but only to users of Windows 7 and Windows 8. Also older computers are likely not to have the resources to run any later version of Windows.

This raises the question whether moving to a new Windows 10 computer is the best move for any members wishing to replace their current hardware. I hope Melb PC can revisit the choices available to members as Windows 10 rolls out. There may be interesting new hardware offerings. Is a tablet a better bet than a new computer? What about a hybrid — touch-screen for portability, transforming to a notebook with standard keyboard for desktop use? Members whose principal use of their computer is for email and web browsing should not need to invest in a powerful machine that is over-specified for their needs. What about a personal 'thin client' adequate for email and web browsing, such as a Chromebook?

Comfort in use is as important as processor speed and other hardware features. For extended use, any device with the keyboard and screen attached to each other

is an ergonomic disaster, ill-matched to human anatomy. That goes for the laptop and notebook, all the more for the touch-screen tablet and smartphone. (Look up 'texting neck'.) Optimum screen distance and height is incompatible with positioning of the hands on a keyboard attached to the lower edge of the screen. Members are better advised to invest in external keyboards and VDUs than to save money they will find themselves spending many times over on therapy for neck or back pain.

On more domestic matters: progress is happening on several fronts, and I expect to have good news next month. Our Major Raffle was a great success.

Melb PC Secretary **Geoffrey Keenan** writes below about our review of Melb PC's rules, to make any adjustments we find necessary after 18 months' use of the rules we agreed at our AGM in 2013. Please respond to his invitation if you have any suggestions. ☐

# Rules — Notice of Revision

## Call for Suggestions

At the February 2015 Committee Meeting it was agreed that we set up a sub-committee to review our Rules. A major issue is the size of the quorum for General Meetings. Another issue is the need for an expensive audit of our books each year.

In addition there are also several minor matters which would benefit from updating or modification.

I expect we would complete our review within 3–4 months on the outside from here. We propose to put to members any changes at a Special General Meeting later this year and for the changes to be in place by the time of our Annual General Meeting.

As the new Secretary I have been given the task of leading this process.

Have you any suggestions on any changes we should consider? If so we would welcome them, and you can forward them to me as follows;

mailto:secretary@melbpc.org.au



*Geoffrey Keenan*

Could I suggest any changes include the following information;

- \* The existing Rule number.
- \* The word/words you suggest be changed, and
- \* A brief reason for the change
- \* Email subject line "Melb PC Rules Revision".

The existing Rules can be downloaded from;

### **Old website:**

<http://www.melbpc.org.au/aboutmelbpc.htm> (Click on Rules of Melb PC) near the top

### **New website:**

<http://stg.mpcug.net.au/about-us/> (Click on link in section near top called: 'MelbPC Rules (Constitution)'). ☐

# Time for a Check Up?



**Book your system in now!**

**PLE PC CHECKUP \$99**

**Includes:**

**Complete physical clean and dust removal,  
full diagnostic check-up,  
check and install of available updates PLUS  
A written report on your PC's health status.**

**Mention you're a Melbourne PC User member  
and get a bonus Mouse mat, thumb drive and Antivirus!**



**Get  
10% off  
your next order**

**Use coupon code MELBPC  
at checkout.**

***First 50 orders!***

**In stock items only. Excludes CPU's and  
products already on special.**



**PLE  
Computers**

**MELBOURNE STORE NOW OPEN!  
1 Kingston Road Heatherton  
PHONE (03) 8375 5771  
EMAIL [heatherton@ple.com.au](mailto:heatherton@ple.com.au)**

**[www.ple.com.au](http://www.ple.com.au)**

All care has been taken by PLE Computer's to ensure the accuracy of the information provided within. Errors and Omissions Excepted.



# Editorial

Do you have something to sell, or to give away free to a good home? This newsletter serves many purposes, the main one being to provide and promote communications between members. Starting now we will run members free ads submitted according to the following guidelines.

## Members Free Ads

1. Must be computer related item(s).
2. Not more than approx 50 words (~300 chars)
3. Use common abbreviations where possible.
4. Limit of three ads per person.
5. Submit as plain text, by email, to [editorpc@melbpc.org.au](mailto:editorpc@melbpc.org.au)
6. Subject line '*Members Free Ad*' and your membership number.
7. Include first name, suburb, phone No, any telephone time limits, and of course, price if applicable.

## Letters to the Editor

If you have something to say about the group, or the newsletter, or anything computer related, write to **[editorpc@melbpc.org.au](mailto:editorpc@melbpc.org.au)** and clearly identify it as a letter for publication. Note: letters that exceed the limits of good manners, polite language and good taste will be edited accordingly.

Downloading some monthly meeting videos recently I was reminded yet again about the changing times and the way computer power and communications have dramatically altered our lives.



Gary Taig

The video download was happening at a range of speeds, the highest seemed to be about 2600KB per second. The file was 280MB and it took precisely two minutes. That's 140MB in one minute which turns out to be 2.3MB per second.

I was remembering the first ever file I downloaded from the USA in approx. 1988-89. It was a file for the Melb PC Bulletin Board. The download took just over one hour. The file was one whole megabyte in size, and the download cost a packet. A 60 minute phone call to the USA, especially at Telstra rates in those days was very expensive. Telstra and I fell out shortly afterwards when they got nasty.

You do the calcs — 2.3MB in one second at today's speed. One megabyte in (say) 65 minutes (that's about 3900 seconds) at 1989 speeds. What a staggering difference. Oddly enough, Telstra and I shook hands and made friends and the very fast speed we enjoy these days is via a Telstra Cable.

That reminds me of another huge but not so obvious difference, this time the complexity and sensitivity of our equipment.

One Friday night in the mid-late 1980s (it was usually *always* a Friday), one of my mates came around and we would play computers long into the night over a nice whisky. He was the IT manager of a large

manufacturing organisation and had built his first computer just before Gates and Allen founded Microsoft. He was the brains, I was the student. Wow, what a teacher to have.

Mike and I were playing with my favourite database development software, experimenting with indexes and the best way to create an index file for the quickest possible data retrieval. Suddenly a noise... *"oops what was that?"* My 20MB Seagate hard disk died. The rest of the night was spent downing the remaining whisky over experiments with Assembler, as we mostly did anyway.

Neither of us knew precisely what had happened. The disk had given up the ghost (but it didn't let any smoke out) and we had no real knowledge of what had gone wrong. The disk was put on a shelf for later consideration and life went on as normal. The data was lost forever and a day.

I used it to show people what a disk looked like inside, I'd show them the internals, the platter and the arm that held the read/write heads etc. I photographed the internals several times and generally got my money's worth from the once valuable piece of data storage equipment.

Several years later Mike rang one Tuesday and said *"You home tonight?"* Yes I was and when he arrived he had a handful of ageing 20MB Seagate disks. *"These are being*

*thrown out"* he said, *"We're finished with them, they're too old and I thought they were the same as your old 20 MB disk that died that night. You still have it, don't you?"* Of course I still had it, he had seen it many times since, still on that same office shelf.

To cut a long story short, we tried replacing the PCB with a couple of the boards from the now discarded disks and guess what? With one of those boards attached the old 20MB Seagate stirred into life.

It was a good lesson in technology. The disk (platter) and the arm were perfectly okay. It was only the PCB that had spat the dummy, those many long months ago.

The end of the story really is a fairy tale. Every file came off that disk as though it had been stored there yesterday. We couldn't believe it. We were trying to imagine the amount of dust and grime that might have entered that disk over the years since we first opened the case. Mind you, it was mostly screwed shut; I didn't leave it sitting, open to the elements, so the chance of dust etc was fairly small.

Anyway I retrieved literally everything. In fact I used it as a backup disk for a long time afterwards, but was never really confident about the integrity of the data and always kept a spare, just in case.

Try doing *any* of that, these days, with our clean room manufactured devices. □

## Members Free Ad

### For Sale

Your Free Ad could be here. Simply follow the instructions on page 5 and (space permitting) your members free ad will be published in the next PC Update Newsletter.

# Linux on a Small Screen

by Stephen Davidson and David Hatton

Using Linux on your desktop or laptop provides you with many options to set up a working environment on your screen. Unlike the more popular operating systems, there is a vast range of choice so that you can tailor your desktop environment to suit your hardware, rather than being restricted to an environment dictated by hardware. While the more esoteric of these environments require some manual configuration, there are several environments that can be customised using the good old “point and click” method.

The Desktop Environment (DE) we are considering here is the KDE netbook DE, which is a variation of the popular KDE Desktop.

KDE is very customisable, and can be readily configured to give a working environment suited to small screen desktops and netbooks. The only significant requirement is graphics hardware with a modest 3D capability. As an example, I’m running Linux Mint KDE on an older (approx 2008) Toshiba M700 Laptop, which has a dual core T8300 2.4GHz CPU, 2GB RAM, and an Intel 965GM integrated Graphics chipset, and this combination is quite responsive and suitable for every day use.



Figure 1. Normal default desktop for KDE.

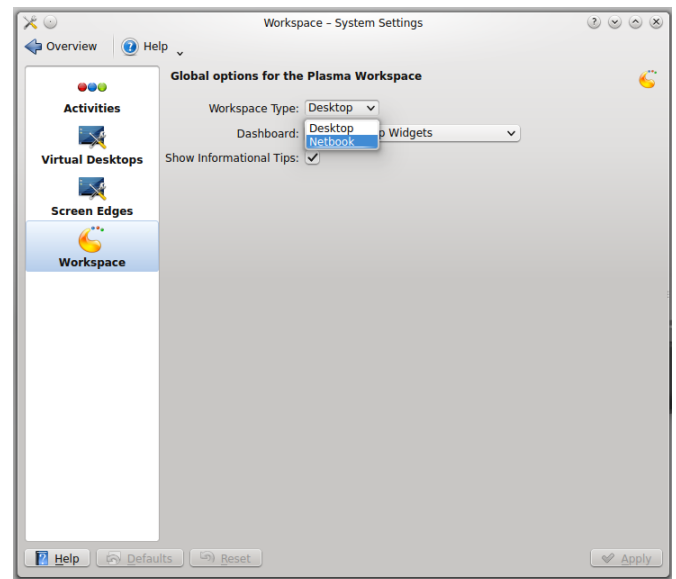


Figure 2. Dialogue for setting KDE Netbook mode.

When installing a Linux distribution with KDE, the default settings you get are for the traditional full desktop (Fig 1). On hardware with a small screen, (say) 12 inches and below, it is possible to enable a different style of KDE desktop that is better suited to the small screen. To enable this from a running default KDE installation, you need to use the main menu to go to System Settings, double-click on “Workspace Behaviour”, and then click on “Workspace”. In the “Workspace Type” drop down list shown on the right hand side of the display, choose the “Netbook” option (Fig 2). Then click on “Apply” to activate the Netbook desktop interface (Fig 3).



Figure 3. Default netbook style desktop.

Note that if the Netbook option is greyed out, you need to download the kde-plasma-netbook package using the system software manager, log out and then back in to restart the Desktop.

Along the very top of the screen is a small panel with a number of tabs and icons. More on this later. Just below the panel are a few icons for the most frequently used applications. These icons are relatively large and suitable for touch screens, or they can be chosen using a mouse.

In the middle of the screen are more icons representing groups of programs with similar uses, for example graphics, Internet applications, etc. Clicking on an icon here opens up a display of the applications available. Any of these application icons can be dragged up to the top part of the screen to effectively customise a list of frequently used programs. A customised arrangement is shown in Fig 4.

Running programs normally have a full screen window and the panel along the top auto hides. The panel will reappear when the mouse is brought to the top of the screen. Alternatively, you can have two programs running side by side (Fig 5). This is set up by dragging the title bar of one window to midway on the left half of screen and the title bar of the other window to the midway point of the right half of the screen.

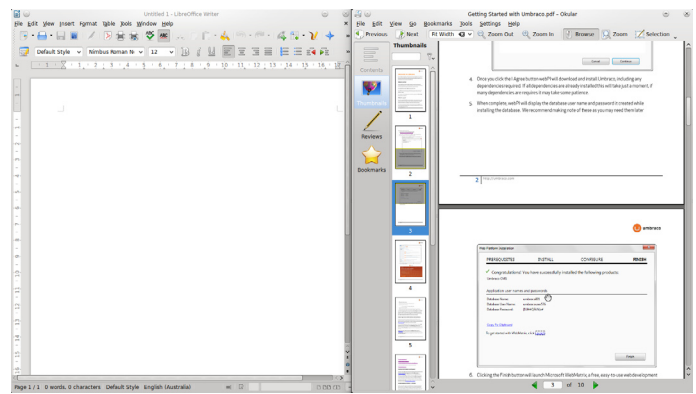


Figure 5. Word processor and PDF reader side by side.

You can also have four programs taking up four corners by dragging the title bar to the top/bottom left or top/bottom right of screen, or two programs running in one half of the screen (Fig 6). So the screen display is more flexible than is apparent at first glance.

Moving the mouse pointer to the top left corner of the screen produces a thumbnail of all the running programs including the Search and Launch screen. You can click on these thumbnails to bring them front and centre. Alt+tab will also switch between programs in a similar way.

In the small panel along the top of the screen there are tabs as mentioned earlier, which enable you to switch back and forth between the "Search and Launch" screen, the "Pages" screen, and some icons in a system tray. These system tray icons show various items of information either when you click on them or hover over them with the



Figure 4. Customised netbook style desktop.

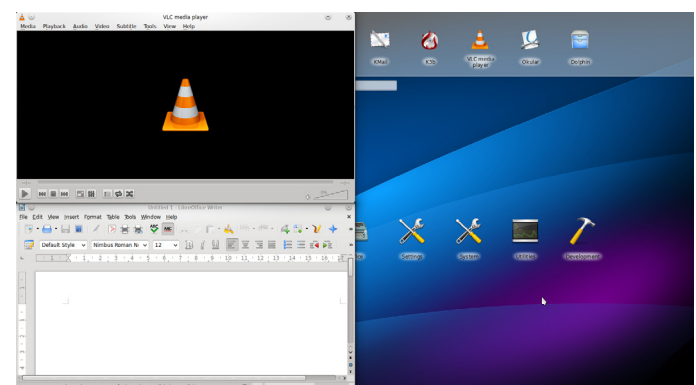


Figure 6. Word processor and media player running in quarter screen mode.



mouse. The default icons enable you to run the Update Manager, set the sound volume, monitor the active network connection, and access a calendar.

The “Search and Launch” screen acts somewhat like a “Home Screen” on mobile devices, while the “Pages” screen provides space to set up customised displays of “widgets”, somewhat like apps on a mobile phone or tablet. Initially there will be a tab for “Search and Launch” and “Page One”.

Page One will have a few widgets installed by default — these are not normally very useful for Australian users and can be removed; like everything else, Page One can be customised.

To start customising Page One, right click on any part of the background to pop up a menu with the “Default Desktop Settings” option at the bottom (Fig 7). Click on this option and you will see a full screen display

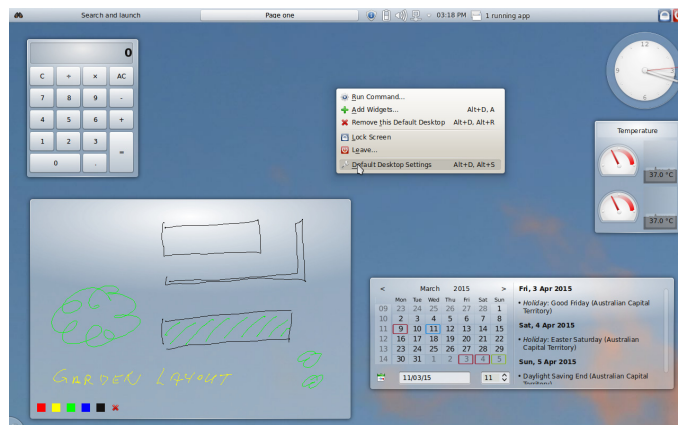


Figure 7. Use Default Desktop Settings to change the Pages screen

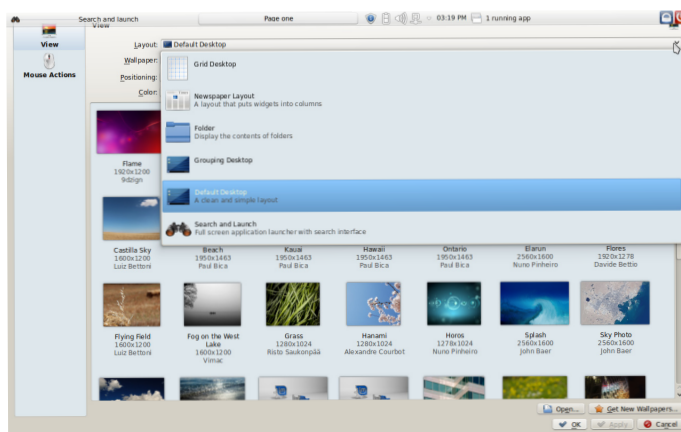


Figure 8. Setting the Default Desktop for the Pages screen.



ABN43 196 519 351  
(Victorian Association Registration No. A0003293V)  
Unit 26, 479 Warrigal Road, Moorabbin VIC 3189  
Telephone: (03) 9276 4000

## Subscription for Monthly Disc

Name								Membership Number			
Address								Current Contact Email Address			
Suburb				Post Code				Phone			

For	Feb	Mar	Apr	May	Jun	Jul	Aug	Sep	Oct	Nov	Dec	Total	\$	
												Amount		

Price: \$3.00 per disc if you collect it from the office or purchase at the monthly meeting.

Add an Extra \$1.00 postage and handling if we mail your order.

**Price for a yearly subscription is \$44.00 inc mailing to your home address.**

### Payment Details

Name on Card	Expiry Date on card	Signature	Date
			/ /

with four options at the top and a large number of background images filling the rest of the display (Fig 8).

For the time being, just select the Layout option to be the Default Desktop and click on “Apply” and then “OK”. Next look for a small logo at the bottom left corner of the screen — this is called the “cashew”. Click on it and a menu bar will appear along the bottom edge of the screen. Click on “Add Widgets” and a larger menu bar will appear along the top edge of the screen (Fig 9). This is a horizontally scrolling menu, and you can drag and drop the various icons shown to put widgets on the desktop.

When you have a widget on the desktop, if you hover your mouse pointer over it, a bar will appear on one side of the widget. This bar gives you the means to set preferences, size, and position on the desktop. Figure 10 shows the calculator widget displaying the preferences tab, together with widgets for an analogue clock, CPU temperature, Calendar and a freehand sketch board. Different widgets may have different options on their preferences tab.

In general, you will be able to drag the widget around the screen by “click, hold and move” on unoccupied space on the preferences tab, resize by click, hold and move on the small rectangle icon, and access other settings by clicking on the small spanner.

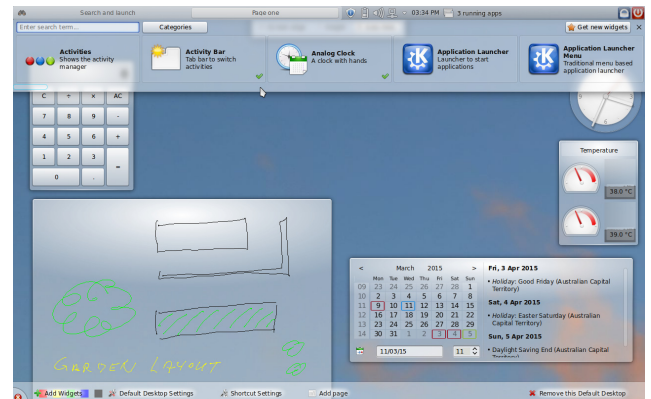


Figure 9. Adding Widgets to Page one

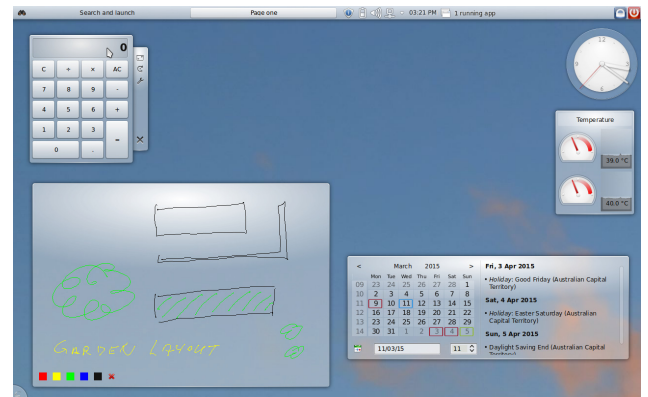


Figure 10. Preferences tab shown on calculator

If you would like to try out the KDE netbook DE, you can find a download link to the Linux Mint KDE version at <http://linuxmint.com> □

# Monthly Meeting

## Wednesday 1 April 2015

At seven o'clock sharp **Barry Martin** will host the usual Q&A Session and then after his President's Report **Harry Lewis** will lead us into the future.

### Planning our Future Monthly Meetings

This month we will have a discussion about future possibilities for our monthly meetings. What form would you like meetings to take? Are there topics you would like to have discussed? Should we change the length of meetings? Let's open it up wide.

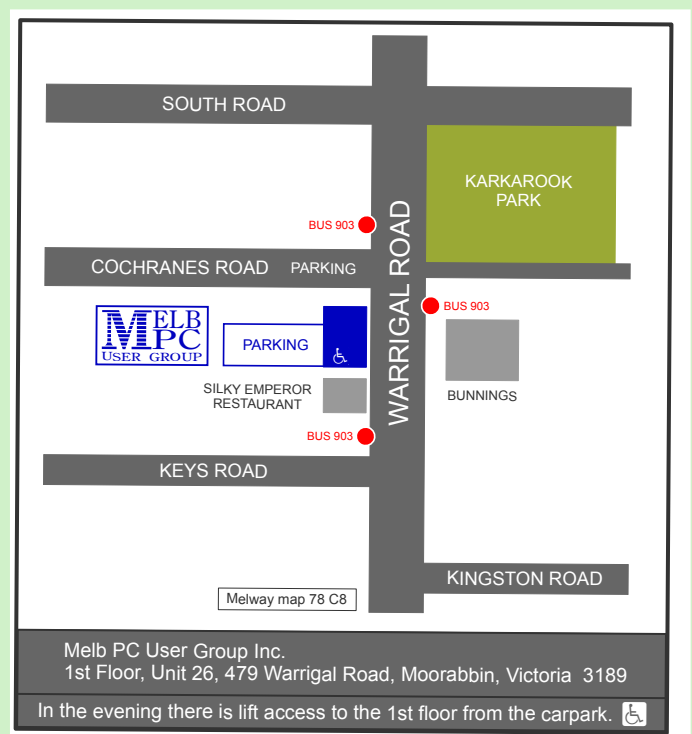
**Harry Lewis** will lead the discussion and Melb PC needs many members to take part in this event. This is your chance to help steer the Group through its next decade or two while we enjoy the rise of 'digital devices' and the sensational developments through which digital technology is taking us.

After the break we will witness a conversation between **Michael Isaachsen** from the Melbourne Museum of Printing and our very own **Tom Rado**. Michael has also been a member for many years and over a period of time he gathered printing equipment from all over, including his own typesetting equipment, and assembled the museum of printing. In 1998 he was forced to close it because of the cost of space. About twelve years ago when Michael was still trying to find a permanent home for his museum, we ran an article in PC Update magazine.

Soon after that he opened the museum in a new location in West Footscray. Visit: <http://mmop.org.au/> and/or <http://www.facebook.com/melbournmuseumofprinting>

Michael will briefly explain the history of printing and then where the museum is going today; he will tell us all about the regular educational activities that take place and his plans for the future.

After the meeting, we get together for WAFFLE@FONG. The WAFFLE SIG ("Wine And Fine Food Lovers Event") will be at FONG's Chinese Restaurant, 725 Centre Rd Bentleigh East, Corner of Francesco Street, Melway 77: J-1



# Random Access

John Swale reports on Questions and Answers from the opening session of the recent monthly meeting and from members' written submissions.



## Questions and Answers

**Q:** I have a problem with Kaspersky. It keeps telling me that I have a lot of things that need to be deleted or they will cause me a problem. There are currently about 6,500 of them. Most of them seem to be DLLs which I understand are library files. What should I do as I do not want to mess up the system by deleting something important?

**A:** DLLs are Dynamic Link Libraries and are shared code used by many programs. It is most unusual for that many DLLs to be a problem. I have seen this on a few machines so I would call the Kaspersky Help Desk on their toll-free number. You may need to uninstall Kaspersky, use their special utility to clean up everything that is left behind and then reinstall the program.

**Q:** I have an A4tech Bluetooth cordless keyboard and mouse. The keyboard had stopped working so I bought a new one but it wouldn't connect to the Bluetooth sender which is connected to the computer by a USB cable. So I got another one and it wouldn't work either. What is the mystery of coupling up Bluetooth devices like that?

**A:** Bluetooth is a black art and probably more so than any other wireless technology. There are a lot of differences between the various versions and the manufacturers often provide devices as a matched pair of sender and receiver.

**Q:** I have a Netcomm ADSL modem which started dropping out a couple of months ago. The lights on the modem were on and the computer icon was OK. It was random occurrence. Sometimes I could get through a session without a problem and on other occasions it would give up one or more times during a session. I put up with it for a few weeks then got in touch with the technical department of my service provider. They patiently stepped me through a process and changed some settings. That worked for a while, but now it is showing the same problem. I feel it is a hardware problem as the device is many years old. I have found that switching it off, waiting a while and then switching it back on can fix the problem for a while. Do you have any thoughts on it?

**A:** The ISPs continue to upgrade the firmware in the DSLAMs at the exchanges. As you have an old modem/router, you may need a firmware upgrade for it to work with the updated DSLAMs. Go to the Netcomm site and see if there is a firmware upgrade for your model. Download the latest version of it as well as the instructions for upgrading the firmware. One thing you could do is to check the power pack voltage output when it has been on for a while and is hot. If it is too low, the device may not hold the connection. So the power pack will need to be replaced. Remember all devices have a limited life and yours may have reached that point.



**Q:** I am having trouble reading PC Update with the Foxit Reader. It works most of the time but on occasions it freezes. If I click on the screen, the computer beeps and the only thing I can do is to close it with Task Manager.

**A:** Check you have the latest version of Foxit. If not uninstall the old one and then download and install the latest version. Over time the PDF specification changes with new features being added. The old versions do not know how to handle these newer features.

**Q:** I have several computers and laptops running off one modem. One of them keeps on giving pop-ups asking if I want to make a lot of money. I am using Bit Defender and the Windows 8 firewall. What can we do to get rid of these annoyances?

**A:** I would suggest running some other things as well. Try Malwarebytes, SuperAntiSpyware and AdwCleaner. Also download the ISO for Kaspersky's rescue disk and burn it to a bootable CD. Boot the computer from the CD and this will run a version of Linux. Kaspersky will automatically start and connect to the internet and update to the latest version. Then it will scan your computer. Note it can take several hours to complete. Because it runs under Linux and there is nothing running under Windows any Windows malware on the PC cannot run. Some members also run Adblock and Flashblock browser add-ons.

**Q:** Has Adobe fixed the problem with Flash player?

**A:** Version 11 was a disaster. We are now up to version 14 which is stable. So you can now allow it to update. □

## Statement of Purposes

The purposes of Melb PC are to provide, on a non-profit basis, education and training to advance the effective utilisation of the personal computer by:

- advancing computer literacy
- advancing the art and science of information processing through education and interchange of ideas
- keeping members abreast of developments in computing and information technology and enabling members to exchange information and experience
- providing a forum for the exchange of views amongst computer users and between computer users and the computer industry
- cooperating supporting or joining with, or in other organisations with similar purposes
- undertaking other activities beneficial to the Group.

# Special Interest Groups

Commencing this month, the SIG section will contain the up-to-date listing of all Special Interest Groups as compiled by committee member **John Hollow**. The list John created sits on the new web site and will be regularly updated by Office staff from your advice. PC Update newsletter will obtain data from that web site immediately prior to publication. SIG reports and notification of forthcoming events for individual SIGs will be located beneath each entry. **Recent changes to SIG contact information will be displayed in RED** for one month and current changes are listed at the end of the SIG section.

## SIG Meetings & Contact Details

Updated: March-2015

Amendments: please advise changes/corrections  
to: office@melbpc.org.au

### Access (database) and Excel

Date (Feb-Nov)	Second Monday of the month
Time	6.30pm - 8.30pm
Email	access@melbpc.org.au
Location	Melb PC HQ, Moorabbin.
Convener(s)	Craig Evans Craig_Evans@racv.com.au

report by **Craig Evans**

Environment: Win 7 with Access 2010 and Excel 2010

During our March meeting we discussed:

**Excel:** Using formulae to automatically show a short list of unique items derived from a long list of duplicated items. The formulas used were: AND, COUNTIF, MAX, IFERROR, OFFSET, MATCH, DMAX, IF.

**Excel:** We created a short list that showed the total of many items. Formulas used: SUMIF.

Our meetings usually follow the Q&A format; occasionally we have a demonstration of database or spreadsheet magic.

### Ballarat

Date (Feb-Nov)	First Thursday of the month
Time	7.30pm - 9.45pm
Location	Midlands Golf Club, Heinz Lane, Ballarat.
Convener(s)	Alan Pittard 5339-4235

### Bayside

Date (Feb-Nov)	Third Thursday of the month
Time	10am - 12noon
Email	bayside@melbpc.org.au
Location	St Stephens Church Hall, Cnr Cochrane Street and North Road, Brighton.
Convener(s)	John Morris 9583-4095 Graham Ackland 9589-6229

report by **John Morris**

At our March meeting the first hour was spent exploring Portable Programs. This was followed by members networking over a cup of Coffee. The Q&A session was

spent discussing the alternatives for expanding WiFi in the home particularly in two story residences. Another subject lead to our April topic *Capturing streaming video using VLC*.

### Beginners East (BEAST)

Date (Feb-Nov)	Third Sunday of the month
Time	10am - 12.30pm
Email	beast@melbpc.org.au
Location	Vermont South Community Centre, 1 Karobran Drive, Vermont South.
Convener(s)	Dave Botherway daveb@melbpc.org.au

report by **Jean de Neef**

At our 15 Feb meeting. Dave Botherway announced that while the EAST SIG had moved premises, we were still considering a similar move — but for at least Feb and March, would stay at VSCH.

### Questions & Answers

**Q:** I downloaded the free version of Malwarebytes a couple of months ago and it scanned the computer only when I told it to. Since the end of the trial period it has been popping up on the screen and starting to scan (sometimes twice in an hour). Is there any way of preventing this?

If it's in the Start Up list, remove it. If not, uninstall it and reload the free (not trial) version and untick Run at Start Up.

**Q:** When I type a long email, the wrong address appears at the top, but I can't delete it. What should I do?

If you don't have the "send again" facility, copy and paste the message into a new email.

### The Battle for your Privacy

This Timeline from AVG covered the period from 1890 to the present. Some important developments were:

1890: Fingerprints first used to identify people  
1990: ID theft becomes common.

1994: HTTPS (secure website) is introduced.  
1995: spyware becomes common.  
2012: canvas fingerprinting enables websites to uniquely identify and track visitors — without needing browser cookies.  
2013: Edward Snowden reveals NASA surveillance.  
2014: EU introduces the right to be forgotten; you can ask for all your records to be obliterated.

To complete the evening **Dave Botherway** gave two presentations, a preview of Windows 10 and How to Identify and remove Crapware. PC Update will run those in detail in a future issue.

Following the Crapware presentation, **Bryan Paten** had two security tips for us. First, check your credit card when someone gives it back to you — to ensure that it's yours! And secondly, beware of anyone using a mobile phone nearby by while you're using your credit card. *[Ed: It's probably well worth having a thorough browse through the website of Scambusters.Org. You will find many warnings and alerts apparently raised from the bad experiences of others — GT]*

Before the break we looked at Saint Valentine's Day in the Wild — some bird and animal images from the Herald Sun, assembled by **Bryan Paten**.

After the break **Dave Botherway** showed a live map of aircraft above Victoria ([www.flightradar24.com](http://www.flightradar24.com)). It can show aircraft all over the world and is surprisingly accurate.

**Next month:** Office 365 as it relates to MelbPC

## Casey

Date (Feb-Nov)	Second Friday of the month
Time	12.30pm - 3pm
Location	Narre Warren Library (Fountain Gate), Overland Drive, Narre Warren 3805.
Convener(s)	Jan Whitaker 9705-9009 Jan Weiner 9796-2807

report by **Con Lilley**

It could have been the date — Friday 13th — that caused a few superstitious members not to attend the March meeting, there were only 16 members present to enjoy the talk given by a visiting speaker **Christine Patmore**. It was obvious from the start that Christine had a very practical approach to Facebook, the subject of her presentation, and had spent many happy hours herself making full use of all it had to offer. Using a laptop, Christine went through all the items she normally covers in a day including Contacts, Events, My Page and My Year in Pictures. In answer to a question about the differences with Twitter, we learned that our speaker was not putting herself forward as an expert on Social

Media but was a self-taught user of Facebook which suited her expectations. This contribution was greatly appreciated by all present.

The shorter segment was introduced after the main speaker, when **Jan Weiner** spoke about Computer Safety. Apart from stressing the need to keep anti-virus software up to date and associated firewalls operational, Jan gave warnings of the traps when downloading programs from the web when more than one downloading button appeared on the screen. Often additional programs are advertised then sometimes embed themselves into your favourite browser, resulting in a multitude of adverts — often very noisy — invading proceedings.

The next meeting of the Casey SIG is the normal monthly meeting on the second Friday, 10 April 12.30pm, at the Narre Warren Library. The two main topics are a short presentation by **Jan Weiner** about her personal use of computers in her daily life, and "Learning Online" by **Jan Whitaker**. All are welcome

## Casey Workshop

Date (Feb-Nov)	Fourth Friday of the month
Time	12.30 - 3pm
Location	Narre Warren Library (Fountain Gate), Overland Drive, Narre Warren 3805.
Convener(s)	Jan Whitaker 9705-9009 Jan Weiner 9796-2807

report by **Con Lilley**

The fourth Friday of the month seemed to come around quickly and on 27 March. Thirteen members attended, including a couple of mentors, present at the Workshop in the Fountain Gate Library meeting room. Those who wished were able to connect to the Pocket WiFi that is available for the members present and this avoids using the Library Web connection which sometimes gets overloaded when too many students sign in to do their homework on the way home from school. Several minor problems were easily sorted and some members took the opportunity to download up-to-date copies of programs that they were currently using either by going direct to the program websites or through [www.ninite.com](http://www.ninite.com). Some were introduced to Google Earth and others participated in a game that uses similar roving techniques but tests one's knowledge of countries throughout the world downloaded from [www.geoguessr.com](http://www.geoguessr.com)

**Next Workshop** scheduled for Friday 24 April. All welcome.

## Communications

Date (Feb-Nov) Second Wed of the month  
Time 7.00 - 9.30pm  
Email phil@melbpc.org.au  
Location Melb PC HQ, Moorabbin.  
Convener(s) Phil Lew 0418-567-019

## Digital Images (SIG renamed)

Date (Feb-Nov) Third Friday of the month  
Time 10am - 12noon  
Location Wadham House,  
52 Wadham Parade,  
Mount Waverley.  
Convener(s) Ian Bock 9807-3701

## East

Date (Feb-Nov) Second Thursday of the month  
Time 7.30pm - 9:30pm  
Email east@melbpc.org.au  
Location Eley Park Community Centre,  
87 Eley Rd, Blackburn Sth.  
Convener(s) Paul Woolard 9877-1059  
Ian Dewhurst 0438-480-500

## East Workshop

Date (Feb-Nov) Second Sunday of the month.  
**(NO meeting in May - Mother's Day)**  
Time 10am - 2pm  
Email eastwsh@melbpc.org.au  
Location Wadham House,  
52 Wadham Parade,  
Mount Waverley.  
Convener(s) Ken Gubbins 9842-8875  
Jeff Webster 9078-0879

## E-Book

### SIG has now CEASED - NO further meetings

Convener(s) Dennis Fieldhouse 9557-6847  
John Swale 0417-530-766

## Essendon — Main meeting

Date (Feb-Nov) First Friday of the month  
**(No meeting 3 April 2015 due to Public Holiday)**  
Time 9:30am - 12noon  
Email essendon@melbpc.org.au  
Location Nancye Kirchner  
Neighbourhood Centre,  
Doyle Street, Avondale Heights.  
Convener(s) John Guegan 9317-7114

### Report by John Guegan

Another busy month for March at Essendon having had several presentations by our members. VIDEMUX a free video editing program was again demonstrated by **Richard Stacewicz**. and was well received by the members. **Nick Merrigan** conducted our second meeting

which is "Open Forum" and a lot of time was devoted to questions from members on a wide range of subjects and answered by Nick. Our third meeting featured a presentation by **Chris Hughes** on converting VHS tapes to DVD. As usual with these types of presentations, the equipment used at home never seems to work on the SIG computer without downloading drivers. Eventually we were up and running and the presentation was a great success. Thanks to Chris.

Next month due to Good Friday, all our meetings are moving forward one week. We haven't finalised our programme as yet, but the web site will advise members as things are arranged.

## Essendon — Open Forum

Date (Feb-Nov) Second Friday of the month  
Time 9:30am - 12 noon  
Email essendon@melbpc.org.au  
Location Nancye Kirchner  
Neighbourhood Centre,  
Doyle Street, Avondale Heights.  
Convener(s) John Guegan 9317-7114

## Essendon — Various Topics

(check website for details).  
Date (Feb-Nov) Third Friday of the month  
Time 9:30am - 12 noon  
Email essendon@melbpc.org.au  
Location Nancye Kirchner  
Neighbourhood Centre,  
Doyle Street, Avondale Heights.  
Convener(s) John Guegan 9317-7114

## Essendon — Multimedia/General

Date (Feb-Nov) **No Meeting**  
Time **Suspended until further notice**  
Email essendon@melbpc.org.au  
Convener(s) John Guegan 9317-7114

## Everything Apple

Date (Feb-Nov) **Fourth Sunday of the month**  
Time 2pm - 4pm  
Email everything-apple@ausom.net.au  
Location Melb PC HQ, Moorabbin.  
Convener(s) Julie Ackland

### March report by Susan Jensen

It is true that Apple has changed the way in which we do things. This was a meeting where attendees led the discussion. One told us that when on holiday she would buy and mail a postcard. Now she takes a photo on her iPad and emails it to friends. She demonstrated the camera app and showed us the settings. She took a photo of the group and emailed it to the convener. She told us one could take a selfie (what a great term) against a background. We had another attendee explain



HDR to the group. One man said he had seen ladies on trains using the iPhone's forward facing camera to see what they were doing when applying makeup on the way to work. I wonder if Apple thought of that one? There were discussions in the group about what to buy to update one's equipment. A good option is the iPhone 6 Plus which would negate the need for an iPad and a smaller iPhone. One can continue to use the older items of course. We were told that USB3C is a type of USB3 (with the blue items so they can be recognised) but the USB3C is an adapter one can use either way round, just as the Lightning adapter is used.

## Everything iPad

*SIG no longer meets under this name; future activities will be combined into Everything Apple SIG (above)*

Email everything-ipad@ausom.net.au  
Location Melb PC HQ, Moorabbin.  
Convener(s) Dick Johnson 9857-7362

## Genealogy East

Date (Feb-Nov) Third Sunday of the month  
Time 1pm - 3.30pm  
Location Vermont South Community Centre, 1 Karobran Drive, Vermont South. 3133.  
Convener(s) David Andreassen  
dav123@virginbroadband.com.au

## Graphics

Date (Feb-Nov)  
Time

**SIG has now ceased to meet  
No more meetings planned**

## Hardware

Date (Feb-Nov) Second Friday of the month  
Time 10am - 12 noon  
Location Wadham House, 52 Wadham Parade, Mount Waverley.  
Convener(s) Kelvin Cording 9438-1047  
Bill Dair 9955-4551

## Hardware Workshop

Date (Feb-Nov) Fourth Saturday of the month  
Time 10am - 12 noon  
Location Melb PC HQ, Moorabbin.  
Convener(s) Barry Martin  
barrymar@melbpc.org.au

## iHelp

Date (Feb-Nov) Approximately 6 monthly  
Time 7pm - 9pm  
Email help@melbpc.org.au  
Location Melb PC HQ, Moorabbin.  
Convener(s) **Dave Simpson**

## Linux and Open Source

Date (Feb-Nov) Second Tuesday of the month  
Time 7pm - 9.30pm  
Email linux@melbpc.org.au  
Location Melb PC HQ, Moorabbin.  
Convener(s) James Cox 9885-5503

## Linux and Open Source Workshop

Date (Feb-Nov) Second Tuesday of the month  
Time 4pm - 7pm  
Email linux@melbpc.org.au  
Location Melb PC HQ, Moorabbin.  
Convener(s) James Cox 9885-5503

## MACE

(Melbourne Atari Computer Enthusiasts)  
Date (Feb-Nov) Third Sunday of the month  
Time 10am - 2pm  
Email maceatari@gmail.com  
Location Melb PC HQ, Moorabbin.  
Convener(s) Andrew Boschan  
0400-851-613

## Macedon Ranges

Date (Feb-Nov) Third Sunday of the month  
Time 2pm - 4pm  
Location Further Education Centre, 18 Hamilton St, Gisborne.  
Convener(s) John Hunter  
0406-868-226

## Microcontroller

Date (Feb-Nov) Second Wed of the month  
Time 7pm - 9.30pm  
Email microcontroller@melbpc.org.au  
Location Melb PC HQ, Moorabbin.  
Convener(s) Phil Lew 0418-567-019  
John Hollow 0417-031-164

## Microcontroller Workshop

Date (Feb-Nov) Second & Fourth Sat of month.  
Time 12noon - 5pm  
Email microcontroller-workshop@melbpc.org.au  
Location Melb PC HQ, Moorabbin.  
Convener(s) John Shirt 0409-568-267  
Rob Brown 0419-285-806

## Mornington Peninsula

Day (General) Meeting  
Date (Feb-Nov) Third Monday of the month  
Time 9.30am  
Email peninsula@melbpc.org.au  
Location Mornington Information Centre, 320 Main St, Mornington.

Convener(s) Terry Said 0427-750-327  
Ian Thomson iaroth@netspace.net.au  
Colin Ackehurst  
colin\_a\_ackehurst@bigpond.com

#### Report by **Terry Said**

Our meetings are divided into three distinct sessions. The first morning session is a general meeting. The initial topic is always members Q&A on any topic associated with the PC or tablets. Preference is given to questions that have been submitted by email prior to the date of the meeting. This enables better technical research by the meeting presenter. Then we take questions from the floor. Invariably this session format brings to light information and comment from other members who have similar issues or have previously resolved the issue.

The first afternoon session broadly focuses on Digital Imaging in the widest context and may include sound or movie components.

The second afternoon session focuses on Family History, covering the many world databases. We also delve into special techniques or sites found to give additional identification, sorting, identifying and validating genealogical data. This session concluding at 4:30 pm is our final session of the day.

Members are welcome at any/all of the sessions.

### Mornington Peninsula Digital Imaging

Date (Feb-Nov) Third Monday of the month  
Time 12.30pm  
Email peninsula@melbpc.org.au  
Location Mornington Information Centre,  
320 Main St, Mornington.  
Convener(s) Lloyd Lobbe

### Mornington Peninsula Family History

Date (Feb-Nov) Third Monday of the month  
Time 2pm  
Email peninsula@melbpc.org.au  
Location Mornington Information Centre,  
320 Main St, Mornington.  
Convener(s) Colin Ackehurst  
colin\_a\_ackehurst@bigpond.com

### Multimedia Home Entertainment (MHE)

Date (Feb-Nov) First Friday of the month  
**(No meeting 3 April 2015 due to Public Holiday)**  
Time 10am - 12 noon  
Email multimed@melpc.org  
Webpage http://www.melpc.org  
Location Wadham House,  
52 Wadham Parade,  
Mount Waverley.  
Convener(s) John Hall 9803-2731  
Kelvin Cording 9438-1047

### Music

Date (Feb-Nov) Third Thursday of the month  
Time 7.30pm - 9.30pm  
Email music@melbpc.org.au  
Location Melb PC HQ, Moorabbin.  
Convener(s) David Godfred

### North East Android

Date (Feb-Nov) Third Wed of the month  
Time 10am - 12noon  
Email ne-android@melbpc.org.au  
Location Uniting Church Hall,  
19 Seddon Street, Ivanhoe.  
Convener(s) Colin Lampshire 9857-5372  
or 0413-640-408  
Kelvin Cording 9438-1047

#### report by **Ron Cummins**

March meeting opened with **Colin Lampshire** advising the audience that the day's principal talk would be given by **Dale Gardner-Berry** on the Screen Beam Mini 2 and Splashtop. As nobody had invested in any new devices, Colin moved on to asking if any new Apps had been tried. He introduced us to Footy Tips, which did not seem to be enthusiastically welcomed. Smart Quick Settings was then mentioned. This is a swipe screen app which allows for fast access to such settings as sound volume. He then showed us a U-tube video clip on Graphene. This is a form of graphite based on a single layer of this material that is both strong, flexible and very conductive. It consists of carbon atoms in an hexagonal structure that looks like classical benzene rings fused together. Presumably the current is carried by the electron that is not bonded to another carbon atom and this must occupy a conductive band along with the other non-bonded electrons. However one of the problems facing its possible use as a very fast acting semi-conductor is the fact that the conductivity cannot be stopped. It does not lend itself to doping with other elements.

After the break Dale took the floor and delivered a clear and concise briefing on two useful applications. Splashtop is free S/W that enables one to use a tablet or smartphone to control a computer remotely via the router. For the PC, go to Splashtop and download the Personal S/W. If you have more than one computer to control you must instal the S/W on each. For the tablet or Smart phone go to Google Playstore and download Splashtop2 Remote Desktop. All devices need permission to access the router. Sleep mode must be turned off on the computers. The S/W invites you to open an account. When the preamble is all done the tablet or phone will recognise the computer/s as devices and the computer is essentially slaved to the tablet/phone which then displays the computer screen and allows manipulation of the computer via touch of icons.

He then moved to Screen Beam Mini 2 from Actiontek. This piece of hardware costs \$60, looks like a USB stick and is inserted into an HDMI socket on the TV. It then enables your tablet/phone to communicate to the TV. The tablet/phone needs to have Android 4.2 OS and Miracast capability. This latter is a protocol for moving video between devices. Essentially Screen BeamMini 2 creates its own WiFi environment between the TV and the tablet/phone and mirrors the material on the device on the TV screen. It effectively turns the TV into a smart TV. It is hence independent of any local environment.

## North East Daytime

Date (Feb-Nov) Second Thursday of the month  
 Time 10am - 12.15pm  
 Email neday@melbpc.org.au  
 Location Uniting Church Hall,  
 19 Seddon Street, Ivanhoe.  
 Convener(s) Colin Lampshire 9857-5372  
 or 0413-640-408

report by Ron Cummins

**Colin Lampshire** opened the meeting and welcomed any newcomers. Unusually nobody had invested any significant sums on new and/or additional equipment so he moved swiftly into the Q&A session. This centred initially on methods of backing up and as usual Acronis was mentioned. However Colin, a big fan of Total Commander, told us he always used this and just copied files to an external HDD. Another topic discussed was the slowing down of the operating system by the number of programs that insisted on being present at start-up when not required. C Cleaner was mentioned as being a useful program to remove these.

After the tea break the floor was given to **Wendy Clark**, a professional photographer who specialises in Macro-Photography. In her view if one wanted to get up close and personal with blooms and insects one needs a macro lens. With these lenses the size of the object matched the size of the camera sensor. A zoom lens cannot get close to this and is more usually about 4:1.

Her preference is for a 100mm lens as it allows one to get a bit further away from an insect such as a butterfly and hence run no risk of disturbing it. With a steady hand and a firm base it can be hand-held. However she said that a tripod was usually necessary with the longer focus lenses as it allowed for slower shutter speeds.

Focus is vital and hence manual manipulation is preferred to autofocus. A decision also has to be made as to how much of the subject needs to be in focus. Other important relevant factors include shade, texture, and camera angle. She spoke of the use of the usual portrait aids such as reflector discs and diffusers to assist with the illumination of the subject. She had brought along a number of her photographs to illustrate the points

she was making and by the time she had finished it was clear that it is a branch of photography that needs careful preparation and thought for a successful outcome. Wendy's briefing concluded with many questions from the audience while they examined her equipment.

## North East Genealogy

Date (Feb-Nov) First Tuesday of the month  
 Time 10am - 12.45pm  
 Email negen@melbpc.org.au  
 Location Uniting Church Hall,  
 19 Seddon Street, Ivanhoe.  
 Convener(s) Lynn Hammet  
 lynnhammet@gmail.com

## Northern Suburbs Linux

Date (Feb-Nov) Third Monday of the month  
 Time 7.30pm - 9.30pm  
 Email nslig@melbpc.org.au  
 Location Community Meeting Room,  
 Watsonia Library,  
 Ibbotson St, Watsonia.  
 Convener(s) David Hatton  
 Stephen Davidson

## Online

Date (Feb-Nov) As you choose  
 Time As you choose  
 Email kazkev@melbpc.org.au  
 Webpage  
<http://www.melbpc.org.au/faq/newsgroups.htm>  
 Location Melb PC Newsgroups & Forum  
 Convener(s) Kevin Martin - Evening only  
 5964-7627 or 0407-343-162

## Programming

Date (Feb-Nov) **Fourth Wed of the month**  
 Time 6.30pm - 9pm  
 Email programming@melbpc.org.au  
 Location Melb PC HQ, Moorabbin.  
 Convener(s) John Viney

## Raspberry Pi

Date (Feb-Nov) Fourth Friday of the month  
 Time 10am - 12 noon  
 Location Wadham House,  
 52 Wadham Parade,  
 Mount Waverley.  
 Convener(s) John Hall 9803-2731  
 Lance Lloyd 9884-5559

## Sunbury — New Users

Date (Feb-Nov) First Thursday of the month  
 Time 9.30am - 12noon  
 Email sunburydaytime@gmail.com  
 Webpage  
<http://sunburydaytime.wix.com/sunbury-pc-club>

Location Sunbury Senior Citizens Centre  
(back room),  
8 O'Shannassy Street, Sunbury.

Convener(s) Kevin Hale 9740-5786  
John Fogarty

## Sunbury — Advanced

Date (Feb-Nov) Second Thursday of the month  
Time 9.30am - 12noon  
Email sunburysdaytime@gmail.com  
Webpage  
<http://sunburysdaytime.wix.com/sunbury-pc-club>  
Location Sunbury Senior Citizens Centre  
(back room),  
8 O'Shannassy Street, Sunbury.

Convener(s) Kevin Hale 9740-5786  
John Fogarty

## Sunbury — Main Meeting

Date (Feb-Nov) Third Thursday of the month  
Time 9.30am - 12noon  
Email sunburysdaytime@gmail.com  
Webpage  
<http://sunburysdaytime.wix.com/sunbury-pc-club>  
Location Sunbury Senior Citizens Centre  
(back room),  
8 O'Shannassy Street, Sunbury.

Convener(s) Kevin Hale 9740-5786  
John Fogarty

## Sunbury — Maintenance & Linux

Date (Feb-Nov) Fourth Thursday of the month  
**AND**  
Fifth Thursday of the month.  
Time 9.30am - 12noon  
Email sunburysdaytime@gmail.com  
Webpage  
<http://sunburysdaytime.wix.com/sunbury-pc-club>  
Location Sunbury Senior Citizens Centre  
(back room),  
8 O'Shannassy Street, Sunbury.

Convener(s) Kevin Hale 9740-5786  
John Fogarty

## Video Inner East

Date (Feb-Nov) Second Monday of the month  
Time 7pm - 9pm  
Email videoinnereast@gmail.com  
Webpage  
<http://users.tpg.com.au/adslo8nb/vie/index.html>  
Location Copland Room,  
Ashburton Library,  
154 High St, Ashburton VIC.

Convener(s) Richard Balsillie 9809-4116

## Video Production — Sony

Date (Feb-Nov) Second Wed of the month  
Time 10am - 12 noon  
Location Melb PC HQ, Moorabbin.

Convener(s) Roger Wragg  
rdwragg@fastmail.fm  
Bob Flack

## Video Production — Pinnacle

Date (Feb-Nov) Fourth Wed of the month  
Time 9.30am - 12 noon  
Location Melb PC HQ, Moorabbin.  
Convener(s) Bill Johnson

## WAFFLE

### (Wine and Fine Food Lovers Event)

Date (Feb-Nov) First Wed of the month  
Time 9.30pm  
(after the Monthly Meeting)  
Email phil@melbpc.org.au  
Location Fongs Chinese Restaurant,  
725 Centre Rd  
(cnr Francesco St),  
Bentleigh East.

Convener(s) Phil Lew 0418-567-019  
Tom Rado 9807-4072

## WASINT

### (Web and Software Investment Tools)

Date (Feb-Nov) Second Tuesday of the month  
Time 10.30am - 12.30pm  
Email wasint@melbpc.org.au  
Location Melb PC HQ, Moorabbin.  
Convener(s) Richard Solly

## Website Design — Tutorials

Date (Feb-Nov) Fourth Sunday of the month  
Time 2pm - 4pm  
Email webdesign@melbpc.org.au  
Location Melb PC HQ, Moorabbin.  
Convener(s) Fleur Stephens 0407-330-963

## Website Design — Troubleshooting

Date (Feb-Nov) Fourth Sunday of the month  
Time 4pm - 6pm  
Email webdesign@melbpc.org.au  
Location Melb PC HQ, Moorabbin.  
Convener(s) Fleur Stephens 0407-330-963

## Windows Plus

(previously Windows 7 & 8)

Date (Feb-Nov) Third Saturday of the month  
Time 10am - 1pm  
Email win78@melbpc.org.au (temp)  
Location Melb PC HQ, Moorabbin.  
Convener(s) John Swale 0417-530-766  
Jan Weiner 9796-2807



Report by **John Swale**

March Windows SIG started with a new scope, a new name and new times. The Windows 7&8 name did not reflect the total interests of the group. With Windows 7 now at its support half-life and Windows 10 preview available for experimentation, there is no need for the specific operation system versions to be specified. The members' interests include security protection, backups and office suites. So Windows Plus is covering these topics as well.

The meetings run for 3 hours from 10:00 am until 1:00 pm with two short breaks. The first session is Windows 7, the second is the Plus topics and general announcements and discussions and the third session is for Window 8.

At the February meeting second session, John Swale gave a presentation on backups — Why (the risks), what (files, disk images), when (how frequently does the data change?) where (how many copies, close by for quick recovery, distant for recovery from a serious disaster) and how (full image, differential backup and incremental backup and the difference with synchronisation). This was followed by a demonstration about installing Acronis backup software.

At the March meeting the Windows 7 session was taken up with answering members' questions. The middle session dealt with recent issues with malware such as *Freak* and *Superfish* and a discussion of Office 365 and some problems with mailing lists. In **April** we will discuss Acronis and show how to set up a schedule for backing up. There will also be a demonstration of the Widows 10 preview.

## Wyndham — General

Date (Feb-Nov)	Second Monday of the Month
Time	7.30pm - 9.30pm
Location	Room 3, Central Park Community Centre, Lonsdale Circuit (off Franklin Blvd), Hoppers Crossing.
Convener(s)	Chris Hughes 9731-0891 John Healey

## Wyndham — MultiMedia (New)

Date (Feb-Nov)	Third Tuesday of the Month
Time	7.30pm - 9.30pm
Location	Room 3, Central Park Community Centre, Lonsdale Circuit (off Franklin Blvd), Hoppers Crossing.
Convener(s)	Chris Hughes 9731-0891 John Healey

## Yarra Ranges

Date (Feb-Nov)	Fourth Tuesday of the month
Time	9.15am - 11:15am
Email	yrig@melbpc.org.au
Location	Japara Living and Learning Centre, 54-58 Durham Road, Kilsyth.
Convener(s)	Bryan Paten 0429-430-640 Shane Mason 9733-5390

February report by **John Sapsford**

**Bryan Paten** welcomed 15 members and two visitors for the first meeting of 2015 at our new venue. Bryan read out a thank you card received from Harold's wife Noreen.

It was noted that the free monthly "*50 Plus*" newspaper is back in circulation. It has an excellent article each month called "Computer Tips". On that subject it was noted that Melb PC has decided to publish only a newsletter each month and it was also revealed that Membership fees have been increased to \$90 (\$80 concession) per year. There was considerable discussion among the group about these changes.

Bryan spoke about the new "*Meet-up*" web site ([www.meetup.com](http://www.meetup.com)) as a possible source to attract new members

There was a discussion about the changes to Melb PC email to Office 365 system. One member had difficulty configuring his Microsoft Live Mail client. He could receive email but not send. A change to the port number solved the problem.

A member recommended the program *adwcleaner* to get rid of a range of unwanted toolbars, browser hijacks and Pups (**P**otentially **U**nwanted **P**rograms). It was mentioned by **Barry Martin** during the Q&A session at the February Melb PC monthly meeting. Shane Mason advised members of the updated Yarra Ranges SIG web site at <http://yrig.hopto.org/>

Bryan then showed an excellent PowerPoint presentation developed by **Dave Botherway** called *Crapware*. This covered software etc. that you may not want, when you download new programs and sometimes program updates from the Internet. Some good tips on what to look out for were in the presentation. We watched a video about the new Cicret electronic bracelet.

During the morning coffee break, **Chris Clerici** from Maroondah Council who happened to be in the building, gave us a preview demonstration on how to use the new state of the art projection and whiteboard facilities.

During our Q&A session, one member asked how to download a movie into UTorrent from the Torrentz search engine. Another member asked if the "Everything" program could be limited to one drive or one folder rather than everything. The program was recommended as an alternative to the Windows search facility.

There was a discussion about the next version of Windows 10 which is likely to be released in October 2015. It may be free to those using Windows 7 or 8, but it is possible Windows 10 could become *fee for use* similar to Microsoft Office 365.

**Shane Mason** recommended the *Deluge* torrent as an alternative *Torrent*. The meeting closed at 11.40 am with the workshop to follow.

--<0>--

March meeting report by **John Sapsford**

**Bryan Paten** welcomed eleven members and our occasional visitor **Dave Botherway**. Apologies received from three members, Shane Mason, Robert Black and Fred Sanstrom

Bryan gave us an update on Windows 10 which is due out later in the year. Members took part in a discussion about the new data retention bill currently passing through the Commonwealth parliament. There was a further discussion about the new Outlook 365 e-mail.

Dave Botherway helped clear up a few member concerns. We also were reminded about the "Ask Leo" email as a way of solving computer problems.

After morning tea the staff from the Living and Learning Center joined us as **Chris Clerici** from the Yarra Ranges Council gave us a comprehensive introduction to the new smart projector and whiteboard features.

We ended the morning with the usual Question and answer session. After that we had a look at some interesting videos such as "How to Amuse Older People" and the 240 year old mechanical doll.

Meeting concluded at 11.40 am. The workshop followed. Our next meeting will be held on Tuesday 28 April. Members are asked to park at the rear of the Centre via Tamworth Road.

## Yarra Ranges Workshop

Date (Feb-Nov)	Fourth Tuesday of the month
Time	11:30am - 1:30pm
Email	yrig@melbpc.org.au
Location	Japara Living and Learning Centre, 54-58 Durham Road, Kilsyth.
Convener(s)	Shane Mason 9733-5390 Bryan Paten 0429-430-640



# Major Raffle Winners

## 1st Prize (Ticket#1161)

Gigabyte Auros x7v2 Laptop windows 8.1 OS. **Helga Baird**, Essendon West

## 2nd Prize (Ticket#0088)

Samsung Galaxy S5 Mobile Phone  
**Arthur Braun**, Abbotsford

## 3rd Prize (Ticket#0845)

Samsung Galaxy Tablet 10.5"  
**Doug Brooke**, Glen Iris

## 4th Prize (Ticket#1377)

Samsung Gear 2 Neo  
**Hans Engelhardt**, member No# 9464

## 5th Prize (Ticket#0340)

UE Ultimate ears Boom Wireless Bluetooth Speaker  
**George Cusworth**, Lower Templestowe

## GAMING, CONFERENCE, TRAINING AND EVENT HIRE FACILITIES

**Three function rooms and a break out area means we can cater for:**

- ⇒ Meetings for 2-12 in a comfortable board room
- ⇒ Fully equipped Computer Training room
- ⇒ Conferences; seating for 170 theatre style
- ⇒ Casual Events
- ⇒ Game hosting available seating 90 – super fast fibre feed

**Audio visual equipment including;**

- ⇒ Full HD Wi-Fi data projector and large screen
- ⇒ High speed fibre Wi-Fi internet access
- ⇒ wireless microphone and speaker system
- ⇒ lectern with microphone
- ⇒ Video recording is available from \$200 per day, hourly rate \$35 per hour (includes DVDs)

Kitchen with double serving areas for drinks and food, tea, coffee and biscuits available at all times

Catering can be arranged—pricing upon application

ROOM HIRE	Per Hour	Per Day (based on a 6 hour day)
Library Room	\$25.00	\$135.00
Training Room	\$40.00	\$220.00
Conference Room	\$85.00	\$490.00

**Includes; data projector and screen, internet access, tea, coffee and biscuits**

**Melbourne PC Members receive 10% discount**

Located at the junction of Warrigal and Cochrane Roads (opposite Bunning's).

Parking available on site, facilities located on level 1 with lift and full wheelchair access.

Public Transport access: frequent bus link from Mentone or Oakleigh stations via 903 bus.

Suitable for presentations, group training and casual events. Available during the day or evening.

Prices subject to change. Further options available.

**Contact the Melbourne PC office team to discuss your event on: (03) 9276 4000**

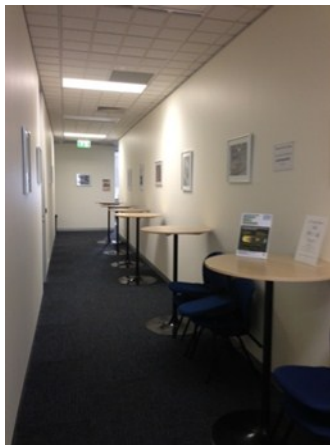
Melbourne PC User Group is a Not for Profit Organisation



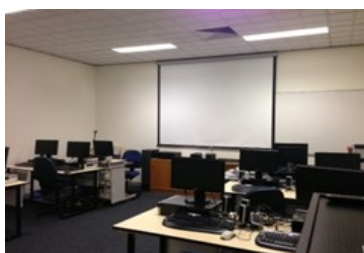
Main Conference Room  
Seating 170



Main conference room  
set up for gaming



Break out Hall



Training Room  
equipped with 12 PCs





## MELBOURNE PC USER GROUP INC.

ABN 43 196 519 351

(Victorian Association Registration No. A0003293V)

Unit 26, 479 Warrigal Road, Moorabbin Vic 3189 Australia

Telephone: (03) 9276 4000

Email: office@melbpc.org.au Web: www.melbpc.org.au

# APPLICATION FOR MOBILE 3G/4G BROADBAND

"Members helping Members"

Name		Membership Number	
Address		Current Contact Email Address	
Suburb	Post Code	Phone	

\* SEE TERMS AND CONDITIONS OVERLEAF. YOU ARE REQUIRED TO SIGN THE TERMS AND CONDITIONS INDICATING YOU HAVE READ AND UNDERSTOOD THEM.

\* Complete all fields on this Mobile Broadband Application. This Information is required for the system database. Incomplete applications will be returned.

## 3G MOBILE DATA PLANS \*more data same price!

3GB	4GB	6GB	8GB	10GB	15GB
<b>\$20</b> PER MONTH First month in advance (\$40), thereafter \$20 on a direct debit on credit card for 12 months. Total spend \$240.00 DEVICE INCLUDED EXCESS DATA USAGE COSTS \$7.50 PER 1GB OR PART THEREOF.	<b>\$30</b> PER MONTH First month in advance (\$60), thereafter \$30 on a direct debit on credit card for 12 months. Total spend \$360.00 DEVICE INCLUDED EXCESS DATA USAGE COSTS \$7.50 PER 1GB OR PART THEREOF.	<b>\$35</b> PER MONTH First month in advance (\$70), thereafter \$35 on a direct debit on credit card for 12 months. Total spend \$420.00 DEVICE INCLUDED EXCESS DATA USAGE COSTS \$7.50 PER 1GB OR PART THEREOF.	<b>\$40</b> PER MONTH First month in advance (\$80), thereafter \$40 on a direct debit on credit card for 12 months. Total spend \$480.00 DEVICE INCLUDED EXCESS DATA USAGE COSTS \$7.50 PER 1GB OR PART THEREOF.	<b>\$45</b> PER MONTH First month in advance (\$90), thereafter \$45 on a direct debit on credit card for 12 months. Total spend \$540.00 DEVICE INCLUDED EXCESS DATA USAGE COSTS \$7.50 PER 1GB OR PART THEREOF.	<b>\$55</b> PER MONTH First month in advance (\$110), thereafter \$55 on a direct debit on credit card for 12 months. Total spend \$660.00 DEVICE INCLUDED EXCESS DATA USAGE COSTS \$7.50 PER 1GB OR PART THEREOF.

☐ **3GB \$210 upfront for 12 month contract = \$17.50 PER MONTH**  
EXCESS DATA USAGE COSTS \$7.50 PER 1GB OR PART THEREOF. Total spend is \$210.00.

## 4G MOBILE DATA PLANS (3 to 4 times faster downloads than 3G)

3GB = \$30	6GB = \$40	9GB = \$50	12GB = \$60
PER MONTH \$30 on a direct debit on credit card for 12 months. Total spend \$360.00 EXCESS DATA USAGE COSTS \$7.50 PER 1GB OR PART THEREOF.	PER MONTH \$40 on a direct debit on credit card for 12 months. Total spend \$480.00 EXCESS DATA USAGE COSTS \$7.50 PER 1GB OR PART THEREOF.	PER MONTH \$50 on a direct debit on credit card for 12 months. Total spend \$600.00 EXCESS DATA USAGE COSTS \$7.50 PER 1GB OR PART THEREOF.	PER MONTH \$60 on a direct debit on credit card for 12 months. Total spend \$720.00 EXCESS DATA USAGE COSTS \$7.50 PER 1GB OR PART THEREOF.

## 4G mobile devices: ☐ USB modem FREE

☐ **3GB \$265 upfront for 12 month contract on 4G plan = \$22.00 PER MONTH**  
MODEM/S NOT INCLUDED EXCESS DATA USAGE COSTS \$7.50 PER 1GB OR PART THEREOF. Total spend is \$265.00.

## BYO PHONE VOICE and DATA \* New plan added

<input type="checkbox"/> <b>\$35 MONTHLY SIM only plan on 4G network</b> (\$420.00 total spend for 12 months, pay monthly) <ul style="list-style-type: none"> <li>Standard calls to friends and family within Australia^</li> <li>\$500 of included value</li> <li>Massive <b>2.5GB of data!</b></li> </ul> <p><b>Just bring your own phone and get connected on the Optus network</b> Pricing Information: The cost of a two minute standard national voice call is \$2.36. The cost of sending a standard national TXT is 30c. Additional data in Australia is 10c/MB (Charge per kB). ^Includes standard national &amp; international voice &amp; video calls &amp; TXT &amp; PXT; voicemail; calls to 1223, 1225, 13, 15 &amp; 18 numbers; &amp; re-routed calls. Excess data usage, \$7.50 per GB.</p>	<input type="checkbox"/> <b>\$55 MONTHLY SIM only plan on 4G network</b> (\$660.00 total spend for 12 months, pay monthly) <ul style="list-style-type: none"> <li><b>Unlimited</b> Phone calls and texts within Australia (Excluding International calls)</li> <li>Standard calls to friends and family within Australia</li> <li>Massive <b>4GB of data!</b></li> </ul> <p><b>Just bring your own phone and get connected on the Optus network</b> Things you will be charged for: Directory assistance (50c per call), Standard national video calling (\$1.00 per minute plus 40c flag fall), 124YES (90c per minute plus \$1.75 flag fall), International calls (See optus.com.au/ international), International SMS (50c per text up to 160 characters), International MMS (75c per MMS), International video calling (\$1.50 per minute + 35c flag fall), Premium talk and text to 19 numbers (Extra charge as advised by that provider) &amp; Excess data usage (\$7.50 per GB).</p>
---	---

### PAYMENT DETAILS

\*Authorize a direct debit against your credit card for the requisite amount as required. Cheques only accepted for the 12 month contract amount. And return it to : Melbourne PC User Group. Suite 26, Level 1, 479 Warrigal Road Moorabbin VIC 3189

Name on Card				Signature*				Date / /		Amount	
<input type="text"/>	<input type="text"/>	<input type="text"/>	<input type="text"/>	<input type="text"/>	<input type="text"/>	<input type="text"/>	<input type="text"/>	<input type="text"/>	<input type="text"/>	<input type="text"/>	<input type="text"/>
											Expiry Date

### OFFICE USE ONLY

S/N	SIM	WiFi Key
-----	-----	----------



**\*Melb PC Mobile Broadband Internet Terms and Conditions**

**A. Definitions**

"Melb PC" means Melbourne PC User Group incorporated or its assignee:

"Member" means a financial member of Melbourne PC User Group and includes:

a) "Full Member" A person accepted into the Group after payment of the current full membership fee, or the related Student or Pensioner concession fee.

b) "Family Member" A domiciled spouse, partner, child' or relative of a full member accepted to participate in activities of the Group and use that Member's Internet account after payment of the Family Membership fee; the subscriber" means the MelbPC full member who has accepted the Melb PC Internet Agreement and paid fees for the subscription period and includes both Full and Email account subscribers. (see Level of Description); "subscription periods" means the period in advance for which the subscriber has paid in full being one of the periods of subscription offered by Melb PC from time to time.

**B. Subscription type & Details.**

Subscription Type	Annual Fee or Monthly Fee	email & Newsgroup Storage or Mail Quota (Limit)	Browsing	Time Limit	Home Page Storage	Download Limit	When Limit Reached
3G Mobile Broadband 2GB 3G Mobile Broadband 4GB 3G Mobile Broadband 6GB 3G Mobile Broadband 8GB 3G Mobile Broadband 10GB 3G Mobile Broadband 15GB	\$210pa or \$20 pcm \$30 pcm \$35 pcm \$40 pcm \$45 pcm \$55 pcm		Yes			2GB pcm 4GB pcm 6GB pcm 8GB pcm 10GB pcm 15GB pcm	Excess data usage on all plans costs \$7.50 per 1GB or part thereof
4G Mobile Broadband 3GB 4G Mobile Broadband 6GB 4G Mobile Broadband 9GB 4G Mobile Broadband 12GB	\$30 pcm \$40 pcm \$50 pcm \$60 pcm		Yes			3GB pcm 6GB pcm 9GB pcm 12GB pcm	Excess data usage on all plans costs \$7.50 per 1GB or part thereof
4G Voice and Data Plan	\$35 pcm		Yes			1GB pcm	Excess data usage on all plans costs \$7.50 per 1GB or part thereof
Email account (www.outlook.com)	\$0	5GB	nil		Nil	nil	
ADSL Coming Soon	NA						

The above charges and details are subject to change from time to time. Limits and Time Quota: daily (non-cumulative) plus bonus time in non-peak periods.

Email Account Subscriber (available to all Melb PC Members without charge)

**C. Description of Service(s)**

General:

Melbourne PC User Group Inc. A0003293V (Melb PC) Internet Service network (the Network) is a service owned and operated by Melb PC for its members. It is a subscriber-funded service administered by the Internet Management Subcommittee (the subcommittee).

Function of the Melb PC Network: The primary function of the Network is to support the transfer of information to and from Melb PC members and the International community, subject to the terms of this agreement.

Access Software: The subscriber will need to acquire suitable mail, news and Web software from our shareware library or other resources. However, Melb PC makes available a configuration kit that automates his process for those who require it.

Accounts: Accounts are issued only to individuals, not company names; Melb PC may reject an application without stating a reason.

Support: Volunteers offer their help in local newsgroups and via an Internet Help team with interaction through Web Boards, e-mail and direct telephone support.

Duration: The subscription to the Network is for one year from the date of acceptance. It automatically terminates upon expiry of membership of MelbPC if that occurs earlier.

Acknowledgment: Successful applicants will include individuals whose forms are correctly filled out and whose funds have been transferred to the Melb PC Bank account.

Net Etiquette: Melb PC endorses adherence to ("Net etiquette" or "Netiquette") as deemed by the subcommittee from time to time and to prevailing International standards widely accepted as suitable behavior for using the Internet.

**D. Terms of Agreement**

- The subscriber asks Melb PC to provide a level of Internet access and Melb PC agrees to do so.
- This agreement starts when an authorized officer of Melb PC has executed it and Melb PC has received a cleared payment for the subscription period.
- If the subscriber renews this agreement for a further subscription period, this agreement applies to the renewed subscription period unless the parties agree otherwise in writing.
- The subscriber acknowledges that:
  - Continuity and speed of the Internet access depends on a wide range of factors many of which are beyond the control of Melb PC.
  - Melb PC has no control over the accuracy of appropriateness of any information on the internet.
  - Melb PC is not responsible for any material available on the Internet.
  - The subscriber's Internet access may be interrupted by equipment failure, the need for routine maintenance peak demand and so on.
  - Melb PC cannot guarantee that the subscriber will be able to secure access at any given time or that fluctuations in demand by other subscribers will not prevent the subscriber from using the full amount of the maximum daily time allowance on any given day.
  - Melb PC cannot guarantee that subscriber's home pages will always be available.
  - Dial up and Mobile Broadband Internet Subscribers are responsible for writing and uploading their own home pages and keeping backup copies of same. Melb PC does not back up these home pages. Subscribers will need to reload their own home pages in the event that the Melb PC facilities suffer any data loss.
  - The right to publish and communicate using home pages is granted to full Internet subscribers in the spirit of user group activities of sharing and furthering the computing experience. The quality of the Melb PC Internet service will be protected by Melb PC reserving its right to suspend the access to any publications of a subscriber who generates a disproportionate amount of Internet traffic. Subject to matters of the kind referred to in the previous clause and to the subscriber's access limits, Melb PC will use its best endeavors to keep Internet access available continuously and to allow the subscriber to have access for the current daily time allowance as set from time to time.
- The subscriber will indemnify Melb PC against any liability, claim, action, suit, demand, loss, cost or expense arising out of or in any way connected with this agreement or Internet access, including without limitation any negligence by Melb PC, its servants or agents.
- The subscriber will pay fees according to Melb PC's standard pricing list from time to time, and a copy of the list certified by an officer of Melb PC is conclusive evidence of the prices applicable at any time.
- Any notice given about any matter concerning this agreement may be given by clicking an accept button following the display of the agreement on a web page, by fax, e-mail or post at the last fax number email or postal address notified to the sender and is deemed to have been received at the time when it would have arrived in the ordinary course of the relevant type of transmission.
- Melb PC may change any term of this Agreement or make additional rules at any time by means of notification delivered in accordance with clause 9. Subscriber may refuse to accept any such change and terminate or her Internet access and receive a pro-rata refund for any paid subscription if a request to this effect this received within 14 days from the deemed receipt date of a notice of changes. Should a subscriber continue to keep using the service past the date of the notice deemed received as described in clause 9, the subscriber shall be deemed to accept the changes. A copy of the rules certified by an officer of Melb PC is conclusive evidence of the rules applicable at any time. The rules from time to time will apply as if they were set out in full as terms of this agreement.
- The subscriber must not deliberately or recklessly do anything that damages Melb PC's equipment, software, setup or services.
- The subscriber must not use Internet access to annoy, harass or harm other Internet users including sending of viruses either wittingly or unwittingly and the sending of spam or unsolicited bulk email.
- The subscriber must not use Internet access for any unlawful purpose or in any unlawful manner.
- Melb PC does not review any publications or communication and does not verify, endorse, or otherwise take responsibility for the content of same.
- Subscribers are legally responsible for their own publications and communications.
- The subscriber will keep safe and confidential any access numbers; codes or passwords allotted to them by Melb PC and notify Melb PC without delay of any compromise of that information.
- Melb PC may suspend or terminate the subscribers Internet access immediately if the subscriber breaches this agreement wittingly or unwittingly or fails to promptly pay any money owed to Melb PC or ceases to be a member of Melb PC.
- Melb PC may delete without notice any material found on its storage disks without giving any reason for doing so.
- Melb PC may make and keep any record it requires for the purpose of this agreement or the rules or for the operation of its services or as required by the law or its officers.
- The subscriber must not transfer, sell or share internet access rights, or allow the account to be used by any other person, other than those Melb PC Family Members who are listed on this application and have paid the relevant charges.
- The user's last name must be displayed in all e-mail and news messages. The user's first name or initials may be displayed as desired.
- Commercial traffic, in the form of private messages and advertisements in newsgroups designated for that purpose, is permitted within the bounds of Net etiquette.
- The "Organisation" field in private email or public newsgroup article headers must always be Melbourne PC User Group Australia, the name of the service provider. Any other organisation or business name is permitted only in the four-line (maximum) "signature" text that is optionally inserted at the end of the message or article.
- The "From" field used in email and news messages may be the Melb PC assigned email address. e.g. [jjones@melbpc.org.au](mailto:jjones@melbpc.org.au) or a "Spam-trap" address, e.g. [jjones@notspam.org.au](mailto:jjones@notspam.org.au) or, subject to Clause 22 an external address. e.g. [jjones@hotmail.com](mailto:jjones@hotmail.com).
- Melb PC may assign its rights and obligations to full Internet Subscribers under this agreement to an Internet access provider that is of equal standard to Melb PC and after notice of assignment is given to the subscriber, this agreement shall have operation as if it had been entered into between the assignee and the subscriber and Melb PC's rights (except for its right to recover any money owed to it immediately before the assignment) and obligations under this agreement shall be at an end. Services to Associate Internet Subscribers shall be limited to the period Melb PC is able to provide them from its own resources.
- The parties submit to the law of Victoria, Australia in relation to any the interpretation of this agreement, or any dispute arising out of it.
- To the extent permitted by law and except as expressly provided to the contrary in this Agreement, all warranties whether express, implied, statutory or otherwise, relating in any way to the subject matter of this Agreement or to this Agreement generally, are excluded Where legislation implies in this Agreement any condition, or warranty and that legislation avoids or prohibits provisions in a contract excluding or modifying the application of or the exercise of or facility under such term, such term shall be deemed to be included in this Agreement. However, the liability of Melb PC for any breach of such term shall be limited at the option of Melb) PC, to any one or more of the following' if the breach related to goods, the replacement of the goods or the supply of equivalent goods; the repair of such goods; the payment of the cost of replacing the goods or of acquiring equivalent goods, or the payment of the cost of having the goods repaired: and if the breach relates to services the supplying of the services again: or the payment of the cost of having the services supplied again. To the extent permitted by law and except as expressly provided to the contrary in this Agreement Melb PC shall not be under any liability (contractual, tortious or otherwise) to subscriber in respect of any loss or damage (save for only personal injury and death) howsoever caused, which may be suffered or injured or which may arise directly or indirectly in respect to the supply of goods or services pursuant to this Agreement or the act, failure or omission of Melb PC.
- Accounts may be suspended without notice to stop transmission of network packets that threaten or have the potential to threaten the security or normal operation of any computer or device on the local or wider network. Such packets are categorised solely by the Internet Management Subcommittee. Users of accounts suspended without notice will be advised by telephone or writing within two working days of the nature of the packets originating from their account. Lifting of the suspension will require the registered account holder to provide evidence of confirmed action being taken to prevent further the transmission of such threatening or potentially threatening packets.
- The Description of Service "Internet Access Agreement" and the services as described on this application form constitute the entire agreement between the partner and neither of them relies on any term, condition, warranty, collateral contract, representation or promise not set out in those parts of these forms.
- Authorised by Melb PC Committee, 1<sup>st</sup> September 2013

I have read the terms and conditions

signed.....dated.....

## MEMBERSHIP APPLICATION FORM

Title	First Name	Last Name
Business Name		
Address		
Suburb		Post Code
Phone		Mobile Number
DOB	Preferred Email Address	

### SUMMARY

**Individuals** \$95 ☐  
**Additional Family Members** \$25 ☐  
 (Spouse and children)  
**Pensioners/** \$80 ☐  
**Adult students A (25+)\***  
**Students B (14-25 yrs.)** \$35 ☐  
**Corporate** \$190 ☐  
 (One membership is two representatives)

**TOTAL:**

\$

### Additional Family Members or Corporate Representatives (Maximum 2 names)

Title	First Name	Last Name	Phone
Title	First Name	Last Name	Phone
Title	First Name	Last Name	Phone
Title	First Name	Last Name	Phone

**Please provide emergency contact details below.**

Full Name.

Phone no.

Referred by member: \_\_\_\_\_ full name or membership number /SIG\_\_\_\_\_

### Terms and conditions

- Adult students A must attach a photocopy of their student card or letter from their educational institution confirming full student status.
  - All student B members must have a Student Card and have evidence of their age at time of joining.
  - Pensioners must attach a photocopy showing both sides of their Centrelink Pension Concession Card.
- Change of family member(s) must be identified in writing to the club secretary.

**I hereby apply for membership of Melbourne PC Users Group Inc. (A000329V) and agree to abide by its rules while I remain a member.**

Signature \_\_\_\_\_

Date \_\_\_\_/\_\_\_\_/\_\_\_\_

### Payment Details

Name on Card	Expiry Date
Credit Card Number	
Signature	Date ____/____/____

### Email User Name Selection

List the user ("login") names you would like in order of preference. Write very clearly, to avoid our confusing certain letters. User names are expressed in lower case letters and must represent your real name in some recognisable way e.g. "John J. Jones" might request user names such as "john", "johnj", "jjones", etc. Any user name that is already allocated or deemed unsuitable in the opinion of the system administrators will not be allocated.

Choice 1. \_\_\_\_\_@melbpc.org.au

Choice 2. \_\_\_\_\_@melbpc.org.au

**Tickets: 1 – \$2 or 3 – \$5**

Pre purchase tickets available from office, contact us on 9276 4000 or email us at [office@melbpc.org.au](mailto:office@melbpc.org.au). The draw will be at the Monthly Meeting 1st April, winners will be contacted via telephone and email.



## \*Fitbit Flex Wireless wristband



- \* See real time progress on your smartphone or computer
- \* Syncs with iPhone 4s and 5, iPads, Samsung Galaxy etc.
- \* Sync your status wirelessly
- \* Track Steps, distance, calories burned and sleep !

## \*Toshiba 1Tb Hard drive

- \* Easy to use with no software to install
- \* Accommodates large digital files with spacious storage capacity
- \* Plug and Play operation
- \* Formatted Windows XP



## Pendopad 7" HD Tablet



- \* Display 7' HD Touch Screen
- \* Front Camera
- \* Wi-Fi and micro USB connection
- \* Enables you to enjoy your music, videos and EBook where ever you may be

## \*Kaiser baas - Netbook TV stick

- \* Watch digital TV on your Notebook
- \* Schedule, Record, time-shift and watch TV
- \* Works on Windows XP, Vista & 7.
- \* 2GB on-board memory lets you record directly to the stick



## \*SanDisk micro SDHC card + adapter & USB + SD card case



- \* Holds 4 micro SD cards
- \* 16 standard SD cards
- \* 4 USB Flash Drives
- \* Ideal for smartphones
- \* 32Gb of storage
- \* Micro SC card with adapter

# Meetings In April 2015

Sunday	Monday	Tuesday	Wednesday	Thursday	Friday	Saturday
<b>Colour Codes</b> <b>Black:</b> SIG meetings at Melb PC H.Q. Moorabbin. <b>Blue:</b> SIG meetings held at other locations. <b>Dotted Box:</b> No SIG meeting held this month.			<b>1</b> <b>Monthly Meeting</b> Melb PC H.Q. Moorabbin 7pm sharp	<b>2</b> <b>Ballarat</b> (7.30pm - 9.45pm) <b>Sunbury Daytime</b> (New Users 9.30am - 12noon)	<b>3</b> <b>Essendon</b> (Main Meeting 9.30am) <b>Multimedia and Home Entertainment</b> (Wadham House Mt Waverley - 10am)	<b>4</b>
For information on "Special Interest Group" activities and meeting times see the group details in PC Update or go to <a href="http://stg.mpcug.net.au/">http://stg.mpcug.net.au/</a> .					<b>Public Holiday</b> <b>Easter Good Friday</b>	
<b>5</b>	<b>6</b> <b>Public Holiday</b> <b>Easter</b>	<b>7</b> <b>North East Genealogy</b> (10am - 12noon)	<b>8</b> <b>Video Production Sony</b> (10am - 12noon) <b>Communications</b> (7pm - 9.30pm) <b>Microcontroller</b> (7pm - 9.30pm)	<b>9</b> <b>E-Book CANCELLED</b> <b>No Further Meetings</b> <b>East</b> (Eley Park Community Centre - Blackburn South 7.30pm - 9.30pm) <b>North East Daytime</b> (Includes Photography & Digital Imaging Ivanhoe 10am - 12noon) <b>Sunbury Daytime</b> (Advanced Users 9.30am - 12noon)	<b>10</b> <b>Casey</b> (Narre Warren Library 12.30pm - 3pm) <b>Essendon</b> (Main Meeting 9.30am) <b>Hardware</b> (Wadham House Mt Waverley - 10am)	<b>11</b> <b>Microcontroller Workshop</b> (12noon - 5pm)
<b>12</b> <b>East Workshop</b> (Wadham House Mt Waverley 10am - 2pm)	<b>13</b> <b>Access (database) and Excel</b> (6.30pm - 8.30pm) <b>Video Inner East</b> (Ashburton Library 7pm - 9.30pm) <b>Wyndham</b> (Hoppers Crossing General 7.30pm - 9.30pm)	<b>14</b> <b>WASINT (investing)</b> (10.30am - 12.30pm) <b>Linux Workshop</b> (4pm - 7pm) <b>Linux</b> (7pm - 9.30pm)	<b>15</b> <b>North East Android</b> (Ivanhoe 10am - 12noon)	<b>16</b> <b>Music</b> (7.30pm - 9.30pm) <b>Bayside</b> (10am - 12 noon) <b>Sunbury Daytime</b> (Main Meeting 9.30am - 12noon)	<b>17</b> <b>Essendon</b> (Open Forum 9.30am) <b>Digital Images</b> (Includes Photoshop Wadham House Mt Waverley - 10am - 12noon)	<b>18</b> <b>Windows Plus</b> (10am - 1pm)
		<b>Melb PC Committee</b>				
<b>19</b> <b>MACE (Atari computers)</b> (10am - 2pm) <b>Beginners East (Beast)</b> (Vermont South 10am - 12.30pm) <b>Genealogy East</b> (Vermont South 1pm - 3.30pm) <b>Macedon Ranges</b> (Gisborne 2pm - 4pm)	<b>20</b> <b>Graphics CANCELLED</b> <b>No Further Meetings</b> <b>North Suburbs Linux</b> (7.30pm - 9.30pm) <b>Mornington Peninsula</b> (Meeting 9.30am Digital Imaging Group 12.30pm Family History Group 2pm)	<b>21</b> <b>Wyndham</b> (Hoppers Crossing Multimedia 7.30pm - 9.30pm)	<b>22</b> <b>Programming</b> (6.30pm - 9pm) <b>Video Production Pinnacle</b> (9.30am - 12noon) <b>Essendon</b> (Multimedia/General 7pm - 9pm)	<b>23</b> <b>Sunbury Daytime</b> (Maintenance & Linux 9.30am-12noon Meeting also held on a 5th Thursday Maintenance & Linux 9.30am-12noon)	<b>24</b> <b>Casey Workshop</b> (Narre Warren Library 12.30pm - 3pm) <b>Essendon</b> (Check website for meeting details. 9.30am) <b>Raspberry Pi</b> (Wadham House Mt Waverley - 10am)	<b>25</b> <b>Hardware Workshop</b> (10am - 12noon) <b>Microcontroller Workshop</b> (12noon - 5pm)
			<b>Deadline for May 2015 Newsletter Articles.</b>			<b>Public Holiday</b> <b>ANZAC Day</b>
<b>26</b> <b>Everything Apple</b> (2pm - 4pm) <b>Website Design</b> (2pm - 6pm)	<b>27</b>	<b>28</b> <b>Programming</b> Now meets on the 4th Wednesday <b>Yarra Ranges</b> (Kilsyth - Meeting 9.15am Workshop 11.30am)	<b>29</b>	<b>30</b>	<b>Have A Question</b> <b>Post it on Yammer</b> <a href="http://yammer.com/melbpc.org.au/">http://yammer.com/melbpc.org.au/</a>	
	<b>Deadline for May 2015 Newsletter SIG Reports.</b>					