



# PC Update

The Newsletter of  
Melbourne PC User Group Inc.

June 2015 Volume 32 Issue 5

Published by  
Melbourne PC User Group Inc.  
Suite 26, Level 1, 479 Warrigal Road  
Moorabbin, VIC 3189

Office hours 9am-5pm  
Phone (03) 9276 4000  
Email <mailto:office@melbpc.org.au>  
Office Manager Dianne Vogt  
Junior Staff Lauren George  
Amber Scarff

ABN: 43 196 519 351  
Victorian Association Registration  
# A0003293V

PC Update Newsletter  
Editor Gary Taig  
Technical Editors Roger Brown  
Kevin Martin  
Malcolm Miles  
Denis Parsons

Map & Calendars: John Swann

Unable to attend the Monthly  
Meeting on Wednesday evening?

Tune in here at 7.00pm and view it  
live over the Internet.

Test Transmission usually commences at around 6.15pm

<http://tv.mpcug.mobi>

Or, you can always download the  
video later or, purchase a DVD from  
the office.

<mailto:office@melbpc.org.au>

## Management Committee

President Harry Lewis  
Vice President Roger Wragg  
Secretary Geoffrey Keenan  
Treasurer Vacancy  
Committee: John Bade  
John Hollow  
Philip Lew  
Don McKenzie  
Gary Taig

## Contents

President's Report	2
Subscription for Monthly Disc	4
Statement of Purposes	3
June Monthly Meeting Details	5
Editorial	6
Printed Newsletter Subscription	6
Our Statement of Purposes	7
May Raffle Prize Winners	7
Everything Apple June Meeting Details	7
Linux – An Alternative to Windows XP	8
Gaming, Training, Conference Hire	12
June Monthly Raffle details	13
Special Interest Group Section	14
Interested in Making Videos?	23
Application for Mobile Broadband	24
Melb PC Membership Application	26
Membership Drive Details	27
June Events & Meetings Calendar	28

Copyright © 2015 Melbourne PC User Group Inc. and individual authors. Except where otherwise stated, all material is the copyright of the author. Contributions from authors may not be copied without the author's prior written permission.

# President's Report



*Harry Lewis*

## Windows 10

Windows 10 will soon be released. Members already planning to update may wish to wait for a time before doing so — but not for 12 months. What suits other members who are using Windows depends on their particular circumstances. An interesting possibility for members with older computers is to try Linux.

The signs are that the next major release of Windows, Windows 10, will happen within the next three months or so. Also that this version will be available free of charge to any users with Windows 7 or 8 — for one year from the release date. We shall try to keep members informed of developments, and plan for a presentation on Windows 10 at the July (or August) monthly meeting. (Please watch the website and our monthly mailout for updates.)

Microsoft has indicated that after the launch of Windows 10 it will not be providing further major versions of Windows, but will instead be updating Windows incrementally. It may not even provide 'service packs' which have marked the within-version upgrades of previous editions.

With earlier Windows versions the advice has been to wait after the initial launch until the first service pack has arrived, so that the worst defects of the original version have

been corrected. In the case of Windows 10 it's not so clear that this advice will work. First, because anyone using Windows 7 or 8 has only the one year to obtain the free upgrade; second, because we're not even sure there will be an identified service pack which provides a full version of Windows 10 in a single installation. (The alternative would be to install the original version and then accept upgrades, which could possibly be a tedious process.)

Several of our members have been testing pre-release versions of Windows 10, and by the time of the full release we should be able to offer suggestions and support for members who use Windows and who may be uncertain about the best course for them.

Members who are already using other operating systems such as Mac OS X or Linux are not affected by these developments. Also our mobile devices which use Apple iOS or Google Android are not affected. However, Windows 10 will become the operating system for Windows mobile devices as well as for desktops and laptops.

Members using versions of Windows earlier than Windows 7 (such as Windows XP or Vista) will not be able to receive free upgrades.

(We have not seen pricing for Windows 10 for those users yet, but it seems clear there will be price to pay, perhaps with lower-cost offers for an initial period.) If they buy new Windows PCs after the Windows 10 launch, they will probably find Windows 10 pre-installed. If they would prefer to keep their old computers working, one option is to convert them to using Linux. In this issue we have advice from **Roger Brown** on how that can be done, and we are updating the Linux DVD offering available from the Melb PC office so that members who prefer to test and then to install Linux from a ready-to-run DVD are supported. (The alternative is to download the installation files from the web and to burn your own DVD.)

In Melb PC there is a dedicated band of Linux users. We have two SIGs devoted to Linux. Several regular contributors to our Yammer forum use Linux and can respond to questions. So if you decide to give Linux a try, you will have plenty of company here at Melb PC. You can try before you install, as the DVDs contain 'live' versions of Linux which can be started and tested from the same disc.

**Monthly meetings:** what you want, what's to come?

At the April monthly meeting we discussed future plans for these meetings. The members who contributed to the discussion at the meeting, by email or in the Yammer thread on this topic, seemed happy with the present format for these meetings: Q&A, President's Report, then two presentations separated by the interval and raffle draw. One suggestion was to replace one presentation with two or three shorter items, and we hope to explore that possibility. Several members asked for more topics outside the Windows/Office frame, perhaps forgetting that we have had several in recent months

on Apple topics, not to mention Linux and the Raspberry Pi. Many interesting ideas have come forward, but we still need members who can help us to realise them, by contacting potential speakers. Offers please to: [president@melbpc.org.au](mailto:president@melbpc.org.au)

Our June monthly meeting will see a focus on Melb PC's own offerings. We have a speaker from **Optus**, which provides our mobile broadband service. We have recently revised our mobile broadband plans to reflect the demand for higher data allowances, and to add flexibility for members who wish for a different mix of services. Our plans cover 4G as well as 3G, and can include phone services as well as data. (Application information has been updated in this June issue — see pages 24 & 25.)

Before the interval **John Bade** will talk about the IPv4 Internet standard. Every 'node' on the Internet has its own address. If you are currently linked to the Internet, you can see yours by entering this URL: [whatismyip.org](http://whatismyip.org). There is a worldwide scarcity of IPv4 addresses, which are still in demand. (IPv6 *longer* addresses are also now available.) Melb PC is fortunate in holding rights to a large batch of IPv4 addresses acquired many years ago when the Internet was younger. These are available for rent. For further information listen to John's talk or phone our Office: 9276 4000.

### Seeking a Treasurer

Recently our Treasurer, Jay Boag, resigned for personal reasons. We thank him for his (albeit brief) period of service, and regret his departure. We are now seeking a new Treasurer. They may be a qualified accountant (or from a related profession) and will certainly have a good head for figures. Offers from members interested in taking up this vacancy are invited and should be

sent to our Secretary, Geoffrey Keenan (secretary@melbpc.org.au).

As regular readers know, Melb PC's finances have improved significantly over the past three years, not least by our reductions in costs due to the move of our Internet services from Burnley to Moorabbin and to the changes in arrangements for *PC Update*. Complementing those is the increase in member subscriptions which enabled our then Treasurer to say with confidence to our last AGM that our current account should be close to balance by 2015-2016. (*Not 2014-2015, because that's an atypical year on both sides of the ledger.*)

### Members Free Ad

FREE TO A GOOD HOME  
Heidelberg

Panasonic 24-pin Dot Matrix Printer KX-P1124 with manual  
Samsung Fax machine SF 2210 with manual  
Canon Laser Shot Printer LBP3200 with CD manual

Chris Adams Ph: 9457 4420  
Normal business hours and weekends

**Nepal** — network infrastructure after the earthquakes

Among the many initiatives by different organizations to help the people of Nepal after the recent and devastating earthquakes, here's one that may be of particular interest to our members. The Internet Society is soliciting donations to support its Nepal chapter, which has been working for more than eight years helping to connect people in Nepal to the Internet. The Society tells us that donations will go to fund efforts to get the vital communication network in Nepal back on its feet and connecting rescuers, aid agencies and families. More information at: <https://www.Internetsociety.org/form/donate-nepal> ☐



ABN 43 196 519 351  
(Victorian Association Registration No. A0003293V)  
Unit 26, 479 Warrigal Road, Moorabbin VIC 3189  
Telephone: (03) 9276 4000

## Subscription for Monthly Disc

Name					Membership Number								
Address					Current Contact Email Address								
Suburb			Post Code		Phone								
For	Feb	Mar	Apr	May	Jun	Jul	Aug	Sep	Oct	Nov	Dec	Total	\$ _____
												Amount	

Price: \$3.00 per disc if you collect it from the office or purchase at the monthly meeting.

Add an Extra \$1.00 postage and handling if we mail your order.

**Price for a yearly subscription is \$44.00 inc mailing to your home address.**

### Payment Details

Name on Card				Expiry Date on card				Signature				Date / /			

# Monthly Meeting

## Wednesday 3 June 2015

At seven o'clock sharp **Barry Martin** will host the usual Q&A Session.

**Harry Lewis** will then give us his President's Report.

### *Main Presentations*

## IPv4 Internet Addresses

**John Bade**, Melb PC Committee member, will explain how IPv4 addresses are used for Internet communications. Melb PC owns rights to multiple IPv4 addresses which are available for rent by Individual and Corporate members.

## Wireless Broadband & Devices

After the break, **Daniel Adelinis** from **Optus** will tell us about the latest wireless broadband developments from Optus, both services and devices. Melb PC's own Internet offerings come from Optus and have recently been upgraded.

After the meeting, we get together for WAFFLE@FONG. The WAFFLE SIG ("Wine And Fine Food Lovers Event") will be at FONG's Chinese Restaurant, 725 Centre Rd Bentleigh East, Corner of Francesco Street, Melway 77: J-1

### Members Free Ad

FREE TO A GOOD HOME

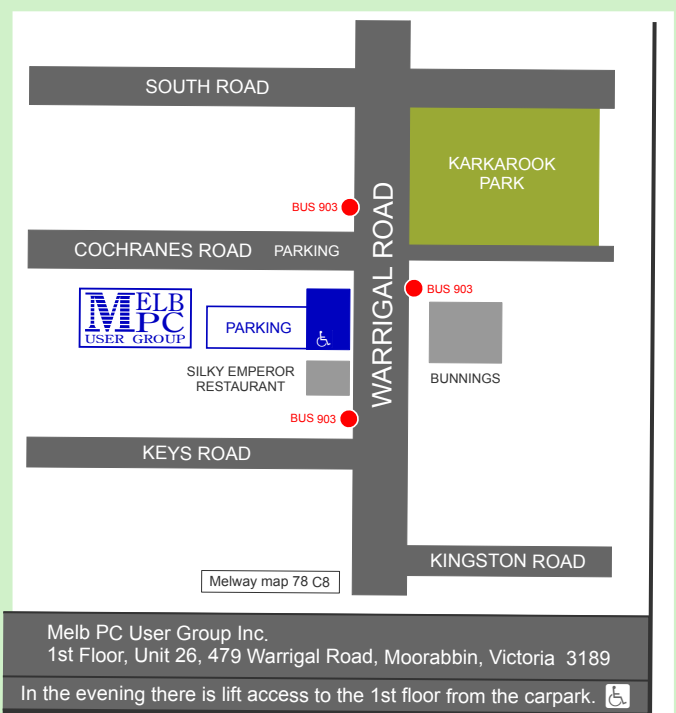
VINTAGE PC WITH ALL SIZE DRIVES  
(good for conversions or copying)

Complete system: Pentium III EB 866MHz, 512MB, USB2, CDROM, Modem 3-1/2 inch & 5-1/4 inch Floppies, Seagate 80GB IDE-Link Wireless, Ethernet, WinXP Home SP3 orig disc. 14" Mon. Mouse. Keyb.

Clean, good working order

Brian Adeney  
badeney@melbpc.org.au  
9808 5818

**No telephone after 9.00pm please**





# Editorial



Gary Taig

One benefit of being the editor of a newsletter or magazine, especially when the role is voluntary, is that when it reaches 6.00am and you had planned to upload the file for distribution prior to that, you can always half fill your page with an advertisement.

Now that I have that off my chest, I remember asking for *Letters to the Editor*. If you don't feel inclined to write to me please be aware that our Secretary **Geoffrey Keenan** reads this document, so too does our presi-

dent **Harry Lewis** and other members of the management committee. If you have a gripe or something you need to get off your chest, this is the lowest cost way of doing it.

Special thanks to **Roger Brown** this month for his wonderful piece on substituting Linux for WinXP and saving heaps. You will notice that our regular Tech Editors are back on board. I thank them sincerely for their work and invite you to give them something to keep them busy. ☐



ABN 43 196 519 351  
(Victorian Association Registration No. A0003293V)  
Unit 26, 479 Warrigal Road, Moorabbin VIC 3189  
Telephone: (03) 9276 4000

## PCUPDATE NEWSLETTER Subscription for print version

Name							Membership Number				
Address							Current Contact Email Address				
Suburb				Post Code			Phone				

For	Feb	Mar	Apr	May	Jun	Jul	Aug	Sep	Oct	Nov	Dec	Total
												Amount \$ _____

Price: \$2.00 per magazine if you collect it from the office or purchase at the monthly meeting.

Add an Extra \$1.50 postage and handling if we mail your order.

**\*\*Price for a yearly subscription is \$38.50 for members and \$55.00 for non members inc mailing to your home address**

### Payment Details

Name on Card				Expiry Date on card				Signature				Date	
												/ /	

## Our Statement of Purposes

The purposes of the Association are — to conduct on a non profit basis activities to help members use personal computers and other similar and related devices to achieve the following outcomes:

- advancing computer literacy;
- advancing education and the exchange of ideas;
- keeping members up to date on developments in computer and information technology and helping members to exchange information;
- representing members in public debate in areas of interest including law reform proposals;
- engaging with similar organisations; and
- carrying out activities that benefit the Association.

## May Raffle Prize Winners

The raffle was drawn during Interval at the Monthly Meeting on Wednesday 7 May.

Winners as follows:

- 1st Prize: Les Martin**, Member #45874  
won the Fitbit Flex Wireless Wristband.
- 2nd Prize: John Bade**, Member #11212  
won the Comsol Power bank charger
- 3rd Prize: Leonard Danson**, Member #46228  
won the D-Link Wireless N600 Dual band USB Adapter
- 4th Prize: Richard Bradford**, Member #28853  
won the Microsoft Sculpt mobile mouse
- 5th Prize: Bryan Nitz**, Member #41792  
won the Jenkins Bluetooth Headphones

Congratulations winners!

## Everything Apple

The emphasis will be on Apple Devices (iPad, iPhone, iPod, Apple TV – and maybe even the Apple Watch) and helping PC users understand the Mac environment.

**Next Meeting: Sunday 28<sup>th</sup> June**  
2pm



**Security. Followed by Mac,  
iPad and iPhone Basics**

There will be a 10 minute tea break half way through and time for questions at the end.

**Fourth Sunday of the Month (except Dec & Jan)**  
**2:00pm-4:00pm**  
**@ Melbourne PC Headquarters,**  
**Level 1, 479 Warrigal Road, Moorabbin**  
<http://stg.mpcug.net.au/contact-us/>

Convenor: Julie Ackland Assistant Convenor: Peter Emery  
Email to: [AppleSIG@melbpc.org.au](mailto:AppleSIG@melbpc.org.au) or [everything-apple@ausom.net.au](mailto:everything-apple@ausom.net.au)

# Linux — An Alternative to Windows XP



Roger Brown

*...and you DO NOT need a New Computer*

Most of us are well aware that Windows XP is no longer supported by Microsoft and that they, and many other computer professionals, recommend XP users move to a later version of Windows. Unfortunately there is a problem with that approach — especially for users whose requirements are relatively simple — maybe simply web browsing, email and the odd document or spreadsheet.

Many such users will be running older, but perfectly serviceable, computer equipment which, regrettably, will not be suitable for running later versions of Windows — Windows 8x or (when available) Windows 10. Such users may quite justifiably feel that buying a new computer for their relatively basic needs is simply not warranted.

## There Is An Alternative

There are versions of the Linux operating system that:

- will run on your present computer
- will provide a user interface very similar to Windows XP or Windows 7
- comes with a range of pre-installed software which will enable you to

carry out the same tasks as you could on Windows XP.

- is (apart from the cost of a DVD) completely free and legal

And the best feature of this operating system is that it's available on a 'live DVD' enabling you to fully test the operating system and satisfy yourself as to its suitability, before you actually install the system or make any changes to your computer.

## How does it work?

Melb PC is offering two different versions of the Linux operating system on DVD at a cost of \$10. These versions are:

- Xubuntu — a Linux version specifically designed for low resource computers but still suitable for any type of computer
- Linux Mint (Mate Edition) — a more comprehensive version which still works well on older computers

(The main functional difference in the versions is in the level of pre-installed software. Either is completely suitable as any additional software can be easily added)



However, you can also download these versions yourself and burn them to DVD — suggested links are:

<http://mirror.internode.on.net/pub/ubuntu/xubuntu/15.04/release/xubuntu-15.04-desktop-i386.iso> (Xubuntu)

<http://mirror.internode.on.net/pub/linux-mint/stable/17.1/linuxmint-17.1-mate-32-bit.iso> (Linux Mint)

(take care to burn these images using the disk image option of your burning software)

Then all you need to do is:

1. Create a DVD or, obtain one from the Melb PC office
2. You must back up any existing data you wish to retain — an external USB drive or thumb drive is ideal
3. Reboot your computer with the DVD in your disc drive.

Should your computer NOT boot from the DVD (but continue to boot from the hard drive) you may need to change the boot order in the computer BIOS.

See

<http://pcsupport.about.com/od/fixtheproblem/ss/bootorderchange.htm> for an easy to follow guide showing how this is done. If necessary, seek assistance on Yammer.

## Try Before You (don't) Buy

Once you boot your computer with the DVD in the drive, a fully working copy of the Linux operating system will load into memory from the DVD. No files on your computer will be touched in any way. Loading time may be slow but once the operating system has loaded you are able to fully test the system to decide whether it is suitable for your needs.

We recommend that your testing should include the following aspects:

Do not choose to install at this point because installation destroys everything on your disk. We recommend that you test the following aspects:

- Check whether the screen resolution is suitable. In most cases, optimum screen resolution will be automatically chosen
- Look at the user interface, which you should find quite similar to Windows XP. Decide for yourself whether you would be comfortable using this system.
- Explore the range of software offered, determine whether you have what you need to carry out the tasks you need to fulfil. You may find it useful to ask in Yammer if you're unsure of what the software does or what to use to meet a particular need.
- Make sure that you are connected to the Internet. This should happen automatically if you use an Ethernet connection. Any wireless connection should also be automatically detected and will connect once the necessary password is provided.
- See if any peripheral devices such as your printer are detected. This may happen automatically — if not ask in Yammer for assistance.

As you can see, you never have to guess whether a Linux distribution will work — if the DVD version works satisfactorily then an installed version will do the same. If you are not satisfied with your testing of the DVD version, simply shut down the system. Nothing on your computer has changed.

## How to install Linux

Installing Linux is easy — far simpler and faster than Windows. All you have to do is click the ‘Install’ icon on your desktop and follow the instructions on screen.

Shortly after you start the installation you will encounter a screen like Figure 1.

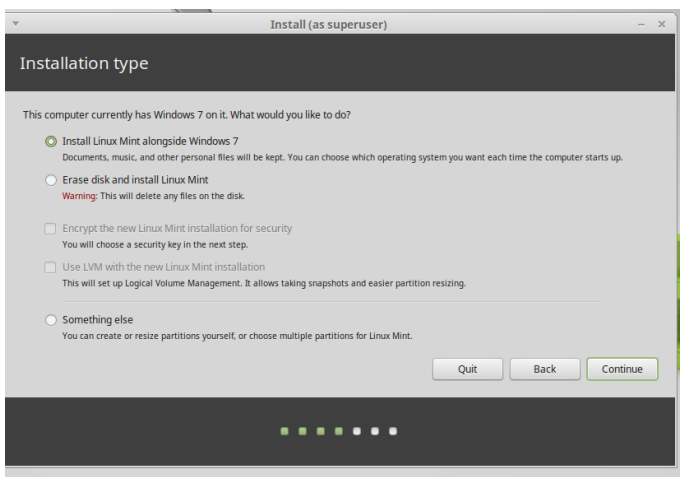


Figure 1. The installation options screen.

You can if you wish select the first option and install Linux alongside your existing operating system. The installer will attend to all the details and your computer will be set up to give you at start-up, the choice of running either Windows or Linux. But that option will involve a reduction in the disk space available for Windows so it may not always be suitable for older computers with limited hard drive space.

And if your computer is running Windows XP the “dual boot” option (as it is called), will still leave you with a vulnerable version of Windows installed on your computer.

For those reasons, we generally recommend you select the second option — to replace your existing version of Windows with Linux. But you must be certain that:

- all essential data is backed up. The installation process will completely reformat your hard drive and destroy the existing data.

## Preparing to install Xubuntu

For best results, please ensure that this computer:

✓ has at least 5.7 GB available drive space

✓ is connected to the Internet

✓ Download updates while installing

Xubuntu uses third-party software to play Flash, MP3 and other media software is proprietary. The software is subject to license terms include

✓ Install this third-party software

Fluendo MP3 plugin includes MPEG Layer-3 audio decoding technology licens

Figure 2. Preparing to install Xubuntu

- you are completely satisfied, from testing the DVD version as above, that the Linux system will meet ALL your needs and that you are confident you can operate it without problems.

## Xubuntu Tip

If you are installing Xubuntu, your opening screen when you install will be as shown in Figure 2. Provided that you are connected to the Internet, we recommend that the options to install updates and to install third party software should be ticked.

Once the installation has been completed you'll be prompted to remove the DVD from your drive and reboot the computer. Your computer will now run the same Linux system as the DVD — the only difference you'll notice is that the system will load faster.

Do note however, that any settings you changed while you were testing the DVD would need to be changed again in the installed version.

What to do if something doesn't seem to work as expected

- Linux is a different operating system to

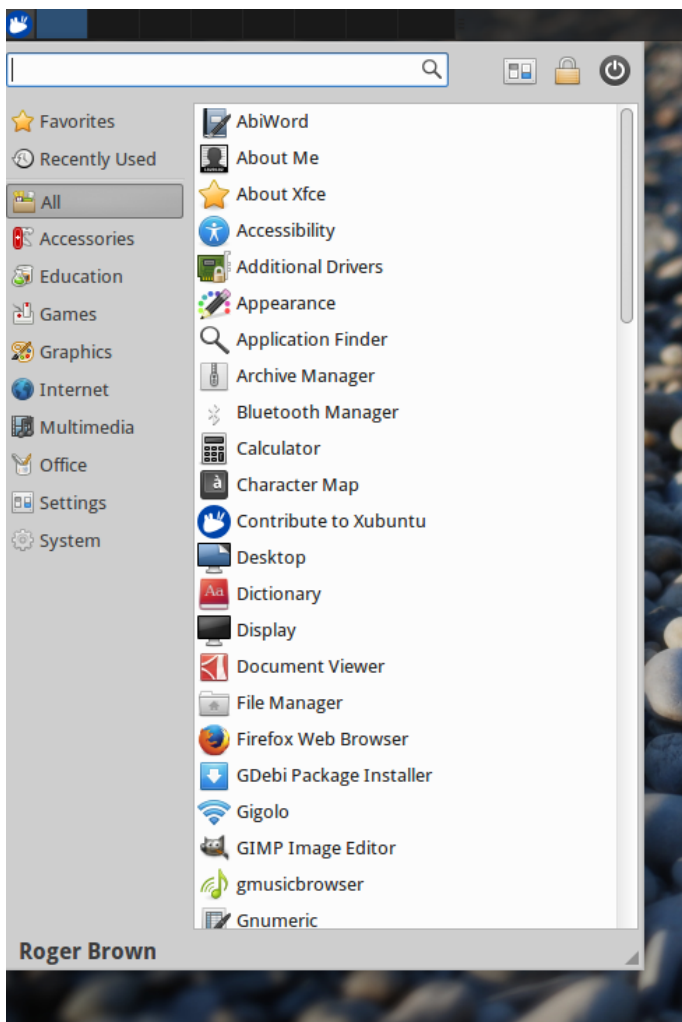


Figure 3. The Xubuntu start menu

Windows and the way in which some things are done may not be quite the same. It's perfectly normal to encounter difficulties and even frustrations in the early stages — we've all been there!

- Your first port of call is Yammer — there are friendly and knowledgeable people there who can help, including quite a

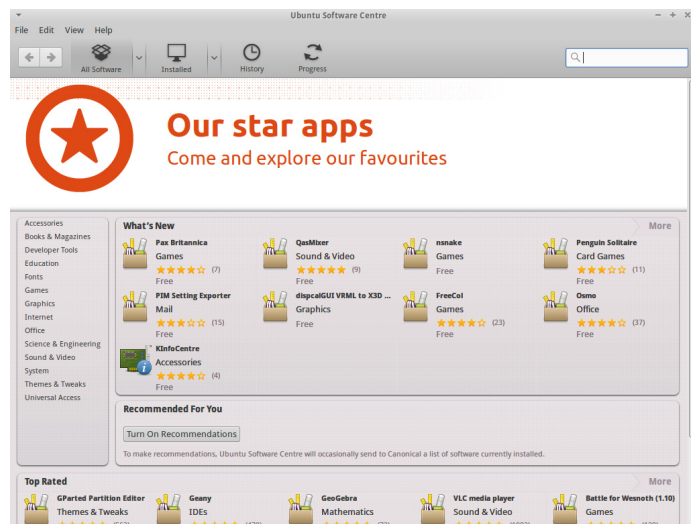



Figure 4. Point and click software installation in Xubuntu

few relatively recent converts to Linux who will certainly understand your difficulties. *Teamviewer* works very well with Linux so in some cases we've been able to provide remote assistance.

And if you still can't get up and running, you are welcome to bring your computer to one of the Linux SIG meetings to get some one on one help. Please email either the Linux SIG(meets at Moorabbin) [linux@melbpc.org.au](mailto:linux@melbpc.org.au) or the Northern Suburbs Linux SIG(meets at Watsonia) [nslig@melbpc.org.au](mailto:nslig@melbpc.org.au).

*Good luck, and welcome to what I regard as the best operating system of all. Roger.* 

## Members Free Ad

FREE TO A GOOD HOME

Heidelberg

Collectors Item  
3M 500 Microfiche reader/printer  
It is very big and heavy

Chris Adams Ph: 9457 4420  
Normal business hours and weekends

## GAMING, CONFERENCE, TRAINING AND EVENT HIRE FACILITIES

**Three function rooms and a break out area means we can cater for:**

- ⇒ Meetings for 2-12 in a comfortable board room
- ⇒ Fully equipped Computer Training room
- ⇒ Conferences; seating for 170 theatre style
- ⇒ Casual Events
- ⇒ Game hosting available seating 90 – super fast fibre feed

**Audio visual equipment including;**

- ⇒ Full HD Wi-Fi data projector and large screen
- ⇒ High speed fibre Wi-Fi internet access
- ⇒ wireless microphone and speaker system
- ⇒ lectern with microphone
- ⇒ Video recording is available from \$200 per day, hourly rate \$35 per hour (includes DVDs)

Kitchen with double serving areas for drinks and food, tea, coffee and biscuits available at all times

Catering can be arranged—pricing upon application

ROOM HIRE	Per Hour	Per Day (based on a 6 hour day)
Library Room	\$25.00	\$135.00
Training Room	\$40.00	\$220.00
Conference Room	\$85.00	\$490.00

**Includes; data projector and screen, internet access, tea, coffee and biscuits**

**Melbourne PC Members receive 10% discount**

Located at the junction of Warrigal and Cochrane Roads (opposite Bunning's).

Parking available on site, facilities located on level 1 with lift and full wheelchair access.

Public Transport access: frequent bus link from Mentone or Oakleigh stations via 903 bus.

Suitable for presentations, group training and casual events. Available during the day or evening.

Prices subject to change. Further options available.

**Contact the Melbourne PC office team to discuss your event on: (03) 9276 4000**

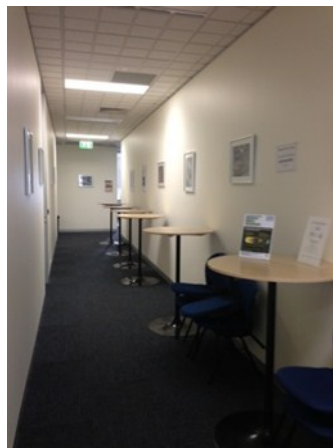
Melbourne PC User Group is a Not for Profit Organisation



Main Conference Room  
Seating 170



Main conference room  
set up for gaming



Break out Hall



Training Room  
equipped with 12 PCs





# JUNE RAFFLE

***Tickets: 1 – \$2 or 3 – \$5***

Pre purchase tickets available from office, contact us on 9276 4000 or email us at [office@melbpc.org.au](mailto:office@melbpc.org.au).

The draw will be at the Monthly Meeting 3rd June, winners will be contacted via telephone and email.

## FitBit Wireless Activity Wristband

- ⇒ Track Your Day:
  - \*Steps, distance floors climbed, calories Burned & active minutes
- ⇒ Track your night:
  - \*Hours Slept, Sleep Quantity & Times wakened
- ⇒ Sync Wirelessly with your Smartphone (Apple/Android) or your Windows/Apple Computer
- ⇒ See progress with charts & graphs
- ⇒ See Time, Stats & Called ID



## Toshiba 1TB Harddrive

- ⇒ Easy to use with no software to install
- ⇒ Accommodates large digital files with spacious storage capacity
- ⇒ Plug and Play Operation
- ⇒ Ready to use with Windows and easily reformatted for Mac
- ⇒ Protects your drive (Internal shock sensor and ramp loading technology)



## PENDOPad 7

- ⇒ Micro SD & USB Input
- ⇒ 0.3MP Front Facing Camera
- ⇒ Access the Internet and thousands of apps while you're on the go
- ⇒ Google Play Store
- ⇒ 1GHZ Dual Core Processor
- ⇒ 7" Touchscreen (1024 x 600)
- ⇒ 8 GB Storage & 512mb Ram



## SanDisk USB Flash Drive

- ⇒ U-Clip attaches to your backpack, key ring, binder and more
- ⇒ Store, Transfer and share video, music and other files
- ⇒ 16GB of Storage
- ⇒ It comes with password protection functionality to keep your private files safe



## USB & SD Card Case + 2 x SanDisk micro SDHC card with adapter

- ⇒ Card Case Stores:
  - \* 4 Micro SD Cards
  - \* 16 Standard SD Cards
  - \* Up to 4 USB Flash drives
- ⇒ 32 GB Micro SD Card
- ⇒ Ideal for Android powered and other smartphones and tablets.
- ⇒ Speed up to 30MB/s\*\* 200X





# Special Interest Groups

## SIG Meetings & Contact Details

Updated: 26 May 2015

Amendments: please advise changes/corrections

<mailto:office@melbpc.org.au>

## Access (database) and Excel

Date (Feb-Nov) Second Monday of the month

**Incl. June Queen's Birthday**

Time 6.30pm – 8.30pm

Email [access@melbpc.org.au](mailto:access@melbpc.org.au)

Location Melb PC HQ, Moorabbin.

Convener(s) Craig Evans

[Craig\\_Evans@racv.com.au](mailto:Craig_Evans@racv.com.au)

report by **Craig Evans**

Environment : Windows 7 with Access 2010 and Excel 2010

During our meeting we discussed

**Excel:** Created code to sort sheets in order of ascending or descending.

**Excel:** Discovered that the message 'Enable Macros' can be turned off by setting the parent folder to a trusted source.

**Excel:** Inserting your own button on the Quick Access Toolbar.

**Excel:** Setting the default number of sheets that appear in a new workbook.

Our meetings are usually Q&A Style; occasionally we have a demonstration of database or spreadsheet magic. A broader explanation, with images, is available on our web page at MeetUp.com. <http://www.meetup.com/Microsoft-Excel-Access-Moorabbin/files/>

## Ballarat

Date (Feb-Nov) First Thursday of the month

Time 7.30pm – 9.45pm

Location Midlands Golf Club,  
Heinz Lane, Ballarat.

Convener(s) Alan Pittard 5339-4235

## Bayside

Date (Feb-Nov) Third Thursday of the month

Time 10am – 12noon

Email [bayside@melbpc.org.au](mailto:bayside@melbpc.org.au)

Location St. Stephens Church Hall,  
Cnr Cochrane Street and  
North Road, Brighton.

Convener(s) John Morris 9583-4095  
Graham Ackland 9589-6229

## Beginners East (BEAST)

Date (Feb-Nov)

Third Sunday of the month

Time

10am – 12.30pm

Email

[beast@melbpc.org.au](mailto:beast@melbpc.org.au)

Location

Vermont South Community  
Centre, 1 Karobran Drive,  
Vermont South.

Convener(s)

Dave Botherway

[daveb@melbpc.org.au](mailto:daveb@melbpc.org.au)

April meeting report by **Bryan Paten**

**Dave Botherway** followed up on a previous announcement that EAST SIG has successfully moved premises to Eley Road Community Centre. The Beast and Genealogy groups are still considering the possibility of a similar move — but staying with VSCH for the time being.

New Acquisitions of Software/ hardware

There are some attractive deals at the moment in 8GB memory sticks. Bryan bought six from Harvey Norman for \$4 each. Apparently Office Works has a similar price for bulk buys of 10+ units of 8GB capacity.

General

Dave explained that he had finalised a new \$90 per month high-speed 'bundle deal' with Optus. However, Optus has now changed some aspects of its bundle deals, for instance calls to mobiles are no longer included, but it's now offering a six month Netflix subscription as part of the bundle. So people may need to exert some form of pressure on Optus when negotiating in order to get the best deal.

Questions & Answers

David-A mentioned that his computer clock was not accurate any more. The best solution to solve the problem could be to replace the CMOS battery on the motherboard. Straightforward job on a desktop, but a little more difficult to do on a laptop motherboard. CMOS batteries can be bought for as little as \$2.95

Choy stated that her laptop can be working fine for 2-3 hours and then the screen suddenly goes blank and the laptop then starts to reboot. One area to investigate "overheating ?

Peter asked about not being able to see photo images he had burnt onto a CD. Was the problem his six year

old Samsung DVD player ? Dave suggested looking up the DVD player specifications to check the player's capabilities (e.g. format) or try the CD in another player to check whether or not the original write operation had been *finalised* before the disc was removed.

Vivian enquired about any possible problems of having two mini tower desktops placed on top of each other connected to a single monitor. Dave recommended that there should be good airflow between the two machines and the use of a single keyboard, monitor and mouse could be best solved by purchasing a KVM (**Keyboard-Video-Mouse**) switch. They sell from \$20 upwards. Be sure to buy a unit with compatible connectivity; for the keyboard and mouse some are USB while models to suit earlier computers used DIN connectors. Switching from one computer to the next involves either a push button or hot key operation, sometimes both options are available.

Dave entertained us before the coffee break by showing two YouTube videos on how far Robot development has come — the Honda ASIMO robot and the General Dynamics Robots. Both of these videos can be found on YouTube.

## TV Evolution

The main item after the break was a comprehensive PowerPoint presentation covering the *"Evolution of TV in Australia"*.

This most informative presentation covered the changes which have occurred since the introduction of the original analogue Television, with a limited number of channels through to a much more comprehensive range exceeding 24 Digital FREE-TV channels now available.

Analogue VCRs (Video Cassette Recorders) have been phased out — and replaced by PVRs (Personal Video Recorders) to record new digital channels. CRT televisions have become obsolete as have VHS tapes — now we have LCD/ LED flat screen TVs, with "smart" televisions having Internet connectivity.

Pay Television initially became available in 1995 (Foxtel and Optus Vision) via cable, with members of the public now having streaming of movies and television programs available via Internet through subscriptions to Video-On-Demand suppliers such as Netflix, Presto and FetchTV.

Overall, a well-received presentation generating many questions and considerable discussion.

## Casey

Date (Feb-Nov)	Second Friday of the month
Time	12.30pm – 3pm
Location	Narre Warren Library (Fountain Gate), Overland Drive, Narre Warren 3805.
Convener(s)	Jan Weiner 9796-2807 Jan Whitaker 9705-9009

report by **Jan Whitaker**

The Casey Friday, 12 June, meeting will focus on all things audio. The 12.30 opening will be by **Phillip Rocke** talking about MP3 player options. The main meeting will be a presentation by **Jan Whitaker** on podcasts, streaming and music. All are welcome to any part of the meeting, especially Melb PC members in the Casey area. This is your local meeting — we would love to see you there.

The Casey May monthly meeting presentations were terrific, using our swish new data projector, purchased with a local small equipment grant from Casey Council. We opened with a demonstration of Teamviewer by **Doug Westcott**. Doug demonstrated how to connect with his computer at home, transfer files, and even replicate his home desktop for us in the room, using his tablet. This program is available free for private use and is the program suggested for iHelp support. Some members, especially those who travel a lot found it so interesting they began installing it as the presentation was in progress.

**Dave Botherway** gave the main presentation about the world of smart phones. We always appreciate when a Melb PC member comes to our SIG to share knowledge. Dave showed us the range of options available, explained the technical differences among the various services, how to protect against overcharging, and factors to consider when choosing a phone, including plans and costs.

After the presentations, we had the all important tea break, Tips and Tricks, and Q&A from the floor.

## Casey Workshop

Date (Feb-Nov)	Fourth Friday of the month
Time	12.30 - 3pm
Location	Narre Warren Library (Fountain Gate), Overland Drive, Narre Warren 3805.
Convener(s)	Jan Whitaker 9705-9009 Jan Weiner 9796-2807

report by **Jan Whitaker**

The Casey workshop on the fourth Friday was well attended. One member brought in his new printer with CD printing to be sorted out. Others worked together

to set up tethering processes. One team of members worked on scanning and cleaning out some months worth of malware and spam buildup. A member who had purchased a refurbished laptop that didn't have the wifi radio it was supposed to have, was finally able to connect after a long struggle with the original supplier to repair it.

#### Jan Weiner adds...

Casey Workshop was well attended as usual with many attendees being shown how to use their own Cleaning programs in action. Many people are unaware they are able to do many other things with a Cleaning program if they read through the various Tabs. Some were shown where to keep an eye on Updates and shown how to make sure *not* to download 32-bit Updates on Windows 7 or 8.1

Our Internet Service which Casey SIG supplies at the Workshop, is a boon to all those without a dongle and is used with enthusiasm by most attending. Up-to-date information on programs with hiccups was discussed and shown to be an increasing cause of minor issues. Both Jans and Doug were the main Helpers with members helping members around the tables. In all, a great Workshop.

## Communications

Date (Feb-Nov)	Second Wed of the month
Time	7pm – 9.30pm
Email	phil@melbpc.org.au
Location	Melb PC HQ, Moorabbin.
Convener(s)	Phil Lew 0418-567-019

## Digital Images

Date (Feb-Nov)	Third Friday of the month
Time	10am – 12noon
Location	Wadham House, 52 Wadham Parade, Mount Waverley.
Convener(s)	Ian Bock 9807-3701

## East

Date (Feb-Nov)	Second Thursday of the month
Time	7.30pm – 9:30pm
Email	east@melbpc.org.au
Location	Eley Park Community Centre, 87 Eley Rd, Blackburn Sth.
Convener(s)	Paul Woolard 9877-1059 Ian Dewhurst 0438-480-500

#### report by Neil Muller

The May meeting commenced with Paul Woolard welcoming all members. An update on VPNs from the March meeting: After further investigation Stuart felt the VPN IPvanish is now one he would highly recommend.

The first session commenced with Stuart Bedford going back in time showing what the East SIG website looked like in 1997. Stuart showed pages archived from his PC which included SIG reports, SIG presentations, an advertisement for the Box Hill Swap Meet, the East SIG membership page and invitations to attend the East SIG.

Stuart then introduced a website called the wayback-machine (<http://archive.org/web/>). This website is an archive of web pages from past years and can be looked upon as a library of web pages. Melb PC is represented in the archive with the earliest page being from May 1997.

While researching this topic Stuart came across an old DOS game he once enjoyed called Frac, an addictive Tetris type game. Stuart demonstrated Frac, (frac.exe, a small 66kB DOS program) using the dosbox website. Our newer PCs are too fast to run these small DOS programs so members wanting to relive PC games from a past era can do so at <http://www.dosbox.com>.

Q&A followed, but this month was without **George Skarbek** so **Dave Botherway** and **Paul Wollard**, with assistance from the audience filled in for George. Questions covered were;

**Q:** When I use Cut & Paste (Ctrl + X, Ctrl + V) between documents, for example a web page to a word document, it doesn't always work. However within the same document it always seems to work. Why would this be?

**A:** Another member has found the same problem but repeating the Cut & Paste usually works. Alternatively highlight the text you wish to move, right mouse click to bring up the context menu and select *Copy* then *Paste* from that menu. A third solution given was to use Copy & Paste (Ctrl + C, Ctrl + V) then delete the item you wanted to cut.

**Q:** I have a new Windows 8.1 PC and wonder whether I should install my old copy of Office 2003 which uses outdated file formats? I assume if I load my old Microsoft Office 2003 I won't be able to open any documents from new versions of Office?

**A:** The new PC will probably have a Starter Edition of MS Office 2013 or 2010 installed on it. This is a cut down version with ads displayed down the right side. However, it may be more than suitable for your needs. As you have Office 2003 it is still worth installing and can be updated to read the new file formats. Search the Microsoft website for the Office 2007 compatibility pack. This will enable your Office 2003 to read and save in the new Office formats docx, xlsx and pptx. According to one member of the audience Office 2003 is still better than the current free alternatives such as Kingsoft Office or OpenOffice.

**Q:** I've been offered Australian Posts MyPost with 1 GB of storage. What are the benefits and is it worth having MyPost?

**A:** This will depend of your requirements. Rather than you receiving bills in the post, these are sent to your MyPost address. Currently the service is used mainly by statutory authorities such as Yarra Valley Water. MyPost will notify users about one week prior to bills needing to be paid and can offer a payment facility if the user requires. The service also acts as an offsite backup of your all your bills but could be seen as adding a third step in the process of receiving bills. The question was raised by one member as what happens if I die, who can then access my bills?

After the break **Dave Botherway** gave an informative presentation titled *TV Evolution in Australia*. The presentation was the result of a member asking what is Presto and Netflix? Rather than answer this straight off, Dave walked us through the changes that have taken place with television over the years. Commencing with free to air TV, to the Video Cassette Recorders (VCRs) both Beta and VHS, to video shops such as VideoEzy, next to DVDs through the post, then came cable and Satellite services such as Foxtel and Optus, media centres (PVRs), Smart TVs connected to the Internet and finally the current crop of download services such as Quickflicks, Presto, Telstra T-Box etc. and the latest streaming services Netflix and Hulu.

In summary, Dave sees streaming video on demand as the way ahead. There will be dramatic competition between content providers with not all surviving. Free to air TV and Freeview may struggle to keep up due their reliance on advertising. A major increase in Internet speed and capacity will be needed in the future. ISPs will be doing deals with content providers to lock in customers. All this will create confusion for us the users.

## East Workshop

Date (Feb-Nov)	Second Sunday of the month.
Time	10am – 2pm
Email	eastwsh@melbpc.org.au
Location	Wadham House, 52 Wadham Parade, Mount Waverley.
Convener(s)	Ken Gubbins 9842-8875 Jeff Webster 9078-0879

## Essendon — Main meeting

Date (Feb-Nov)	First Friday of the month
Time	9:30am – 12noon
Email	essendon@melbpc.org.au
Location	Nancye Kirchner Neighbourhood Centre,

Convener(s) Doyle Street, Avondale Heights.  
John Guegan 9317-7114

## Essendon — Open Forum

Date (Feb-Nov)	Second Friday of the month
Time	9:30am – 12 noon
Email	essendon@melbpc.org.au
Location	Nancye Kirchner Neighbourhood Centre, Doyle Street, Avondale Heights.
Convener(s)	John Guegan 9317-7114

## Essendon — Various Topics

	(check website for details).
Date (Feb-Nov)	Third Friday of the month
Time	9:30am – 12 noon
Email	essendon@melbpc.org.au
Location	Nancye Kirchner Neighbourhood Centre, Doyle Street, Avondale Heights.
Convener(s)	John Guegan 9317-7114

## Essendon — Multimedia/General

Date (Feb-Nov)	Fourth Wed of the month
Time	7pm – 9pm
Email	essendon@melbpc.org.au
Convener(s)	John Guegan 9317-7114

## Everything Apple

Date (Feb-Nov)	<b>Fourth Sunday of the month</b>
Time	2pm – 4pm
Email	everything-apple@ausom.net.au
Location	Melb PC HQ, Moorabbin.
Convener(s)	Julie Ackland <b>Peter Emery</b>

The emphasis is on Apple iDevices (iPod, iPhone, iPad, AppleTV, Time Capsule Airport Extreme) and helping people understand the Mac environment.

## Genealogy East

Date (Feb-Nov)	Third Sunday of the month
Time	1pm – 3.30pm
Location	Vermont South Community Centre, 1 Karobran Drive, Vermont South. 3133.
Convener(s)	David Andreassen dav123@virginbroadband.com.au

The Genealogy SIG is for those beginning genealogy and for those who are advanced but need more computer knowledge to move ahead. Members' trials, tribulations and expertise are openly discussed and freely shared in this self-help group.



## Hardware

Date (Feb-Nov)	Second Friday of the month
Time	10am – 12 noon
Location	Wadham House, 52 Wadham Parade, Mount Waverley.
Convener(s)	Kelvin Cording 9438-1047 Bill Dair 9955-4551

## Hardware Workshop

Date (Feb-Nov)	Fourth Saturday of the month
Time	10am – 12 noon
Location	Melb PC HQ, Moorabbin.
Convener(s)	Barry Martin barrymar@melbpc.org.au

## iHelp

Date (Feb-Nov)	Approximately 6 monthly
Time	7pm – 9pm
Email	help@melbpc.org.au
Location	Melb PC HQ, Moorabbin.
Convener(s)	Dave Simpson

### Current Web address:

<http://stg.mpcug.net.au/interest-groups/general/ihelp/>

report by **Leighton West**

It is with sincere regret that I announce **Ed Farrell's** resignation from iHelp. Ed has supported us since our inception and his *bedside manner* has been appreciated by many. We wish him all the best in further retirement and thank him for his past efforts.

## Linux

Date (Feb-Nov)	Second Tuesday of the month
Time	7pm – 9pm
Email	linux@melbpc.org.au
Location	Melb PC HQ, Moorabbin.
Convener(s)	James Cox 9885-5503

## Linux Workshop

Date (Feb-Nov)	Second Tuesday of the month
Time	4pm – 7pm
Email	linux@melbpc.org.au
Location	Melb PC HQ, Moorabbin.
Convener(s)	James Cox 9885-5503

## MACE

(Melbourne Atari Computer Enthusiasts)

Date (Feb-Nov)	Third Sunday of the month
Time	10am – 2pm
Email	maceatari@gmail.com
Location	Melb PC HQ, Moorabbin.
Convener(s)	Andrew Boschan 0400-851-613

## Macedon Ranges

Date (Feb-Nov)	Third Sunday of the month
Time	2pm – 4pm
Location	Further Education Centre, 18 Hamilton St, Gisborne.
Convener(s)	John Hunter 0406-868-226

The Macedon Ranges members have a common interest in computers and range from beginners to technicians with the sole aim of sharing knowledge, experiences and helping each other. The SIG is a general purpose group that is free flowing and may or may not have a specific subject to discuss each meeting. There are times a special guest is invited to speak on a particular subject that has been requested by a group member. At other times there may be special instruction and demonstrations on particular software or hardware. Members can also bring along any hardware they are having problems with for the group to try and resolve.

## Microcontroller

Date (Feb-Nov)	Second Wed of the month
Time	7pm – 9.30pm
Email	microcontroller@melbpc.org.au
Location	Melb PC HQ, Moorabbin.
Convener(s)	Phil Lew 0418-567-019 John Hollow 0417-031-164

Microcontrollers are small cheap computer chips which measure or sense input (e.g. temperature, door-open) and control outputs (e.g. displays, motor control), i.e. all combinations of analog and digital, input and output. They need very few other components to function, and are in many products (e.g. cameras, cars, toys). Our group is for people to develop microcontroller projects (including the software-programming), gadgets for fun and more serious purposes. We make machines, using microcontrollers, and other electronics, to do things. We cater for all levels of knowledge, novice to experienced — members helping members. The Wednesday meeting involves discussion and presentations. The associated Saturday Workshop is informal and hands-on.

## Microcontroller Workshop

Date (Feb-Nov)	Second & Fourth Sat of month.
Time	12noon - 5pm
Email	microcontroller-workshop@melbpc.org.au
Location	Melb PC HQ, Moorabbin.
Convener(s)	John Shirt 0409-568-267 Rob Brown 0419-285-806

The Saturday Workshop is a *Creative Space*. It is a space to express your creativity. Its development depends on those who are involved and their interests. The workshops are centred around microcontrollers but are not limited to microcontrollers. If you are looking for



a space that facilitates sharing of ideas and support, a place where you can express your creativity, then this SIG could be what you are looking for. The Workshop is an informal SIG, a place to work on your project, start a new project, or join a group project.

## Mornington Peninsula

### Day (General) Meeting

Date (Feb-Nov) Third Monday of the month  
Time 9.30am  
Email [peninsula@melbpc.org.au](mailto:peninsula@melbpc.org.au)  
Location Mornington Information Centre,  
320 Main St, Mornington.  
Convener(s) Terry Said 0427-750-327  
Ian Thomson [iaroth@netspace.net.au](mailto:iaroth@netspace.net.au)  
Colin Ackehurst  
[colin\\_a\\_ackehurst@bigpond.com](mailto:colin_a_ackehurst@bigpond.com)

## Mornington Peninsula Digital Imaging

Date (Feb-Nov) Third Monday of the month  
Time 12.30pm – 2pm  
Email [peninsula@melbpc.org.au](mailto:peninsula@melbpc.org.au)  
Location Mornington Information Centre,  
320 Main St, Mornington.  
Convener(s) Lloyd Lobbe

## Mornington Peninsula Family History

Date (Feb-Nov) Third Monday of the month  
Time 2pm – 4.30pm  
Email [peninsula@melbpc.org.au](mailto:peninsula@melbpc.org.au)  
Location Mornington Information Centre,  
320 Main St, Mornington.  
Convener(s) Colin Ackehurst  
[colin\\_a\\_ackehurst@bigpond.com](mailto:colin_a_ackehurst@bigpond.com)

## Multimedia Home Entertainment (MHE)

Date (Feb-Nov) First Friday of the month  
Time 10am – 12 noon  
Email [multimed@melpc.org](mailto:multimed@melpc.org)  
Webpage <http://www.melpc.org>  
Location Wadham House,  
52 Wadham Parade,  
Mount Waverley.  
Convener(s) John Hall 9803-2731  
Kelvin Cording 9438-1047

The aim of the interest group is to assist members in the installation and operation of PC based hardware and software to run and maintain Multimedia Home Entertainment systems. This would include such things as Personal Video Recorders (PVRs), Media Servers (including Windows Home Server), Internet streaming of video and audio, Sony PS3 and Windows X-Box home entertainment systems, and home networking and storage systems for playback of video and audio. Attendees from beginner to expert level are all welcome. Members are encouraged to bring their own equipment to gain hands-on experience in setup and/or maintenance.

## Music

Date (Feb-Nov) Third Thursday of the month  
Time 7.30pm – 9.30pm  
Email [music@melbpc.org.au](mailto:music@melbpc.org.au)  
Location Melb PC HQ, Moorabbin.  
Convener(s) David Godfred  
Bill Sakell

The Music SIG is for members who like to make or simply listen to music. Bring along your creations, questions and problems. New members are always welcome.

## North East Android

Date (Feb-Nov) Third Wed of the month  
Time 10am – 12noon  
Email [ne-android@melbpc.org.au](mailto:ne-android@melbpc.org.au)  
Location Uniting Church Hall,  
19 Seddon Street, Ivanhoe.  
Convener(s) Colin Lampshire 9857-5372  
or 0413-640-408  
Kelvin Cording 9438-1047

report by **Ron Cummins**

**Colin Lampshire** opened our May meeting by showing us his new pocket size Panasonic *Lumix* camera, which like **Kelvin Cording's** (last month), has WiFi built-in. We then moved to general discussion about available Apps. Among these were *Photo Funia* (which enables you to put different heads on bodies in your images), *Wiki-camp* (which finds camp sites on any map), *Colornote* (an alternative to *Evernote*), *Clueful* (which analyses your Apps and gives them a privacy score) and *Sweepclean*. One member was having difficulty finding cases made for tablets other than Samsung and I-Pad and wanted to know of any retail outlets.

After tea **Kelvin Cording** took the floor to give us a briefing on *EZCast Pro*. This is the latest App that exploits the *Measy Miracast* dongle on a TV with HDMI. Other such devices are *Chromecast* and *Screen Beam* that enable you to project images from your tablet and/or telephone to the TV. This new system exploits the properties of the latest high speed modems by routing the app on phone or tablet via the router to the *EZCast* H/W on the TV. The great advantage is said to be that you can connect multiple devices at the same time using split screen (assuming you want to). However, as often happens gremlins crept into the presentation and Kelvin was having all sorts of problems in demonstrating the App. Nothing seemed to go right. It became clear though that as a WiFi device it certainly worked because several members of the audience were able to use the mirror facility on a Samsung tablet to project their own home pages up on the screen. Whichever one appeared was due to the strength of the output signal from a particular tablet. However Kelvin was unable to demonstrate the multiple device facility. Gremlins *definitely can* defeat a roomfull of techies.

## North East Daytime

Date (Feb-Nov)	Second Thursday of the month
Time	10am – 12.15pm
Email	neday@melbpc.org.au
Location	Uniting Church Hall, 19 Seddon Street, Ivanhoe.
Convener(s)	Colin Lampshire 9857-5372 or 0413-640-408

report by **Ron Cummins**

Our Convenor, **Colin Lampshire** opened the May meeting as usual with some interesting images and videos captured from the Internet. This month's were arresting images of some remarkable places in the world and videos from Russia purporting to show some incredible transport near misses on Russian roads. They were quite startling. **John Grant** then introduced us to *Choice Computers* to which he subscribes. It is \$52/year and there are six editions. He also suggested that members look at *World Wide Telescope* which is a free Microsoft program that puts the Universe at your bidding on your computer. (*WWT 5.1 Gold*). I've downloaded it and it is quite stunning with its interactive controls. There will be a learning curve. John once again urged us to use the *Windows Secrets* website as it gives some useful advice on which of the many updates are necessary to keep your computer efficient and safe. *You should not be on automatic updating.*

After the tea break **Peter Bellmont** took the floor to give us some more examples of the use of *Adobe Lightroom* to improve your images. He reminded us that the drives attached to the computer are on the left hand side of the screen and it is from these that you enter your images and catalogue and keyword them before any manipulation and subsequent export. In the *Develop* window are all of the image modification controls and he pointed out the importance of the *Histogram* which shows the colour distribution of the image. The profile here should be altered to ensure a good range from black to white. Other important controls are cropping, white balance, and especially the adjustment brush. He also uses clarity and vibrance and advised caution when using saturation. In the detail box he uses sharpening and noise. He demonstrated the use of these controls on a scene taken from an aircraft window and another of a panorama of the Great Wall. In this he also used *fill light* to get more detail in the shadows. He closed an informative session by an expert with the use of *Custom Brush* and its large range of adjustments.

## North East Genealogy

Date (Feb-Nov)	First Tuesday of the month
Time	10am – 12.45pm
Email	negen@melbpc.org.au

Location	Uniting Church Hall, 19 Seddon Street, Ivanhoe.
Convener(s)	Lynn Hammet lynnhammet@gmail.com

## Northern Suburbs Linux

Date (Feb-Nov)	Third Monday of the month
Time	7.30pm – 9.30pm
Email	nslig@melbpc.org.au
Location	Community Meeting Room, Watsonia Library, Ibbotson St, Watsonia.
Convener(s)	David Hatton Stephen Davidson

The Northern Suburbs Linux SIG provides a focus for members living in the northern suburbs who are interested in learning more about using Linux in day-to-day computing tasks. Meeting topics are influenced by the regular attendees; beginners and visitors are most welcome. For SIG news and last minute updates please see our Web pages.

## Online

Date (Feb-Nov)	As you choose
Time	As you choose
Email	kazkev@melbpc.org.au
Webpage	<a href="http://www.melbpc.org.au/faq/newsgroups.htm">http://www.melbpc.org.au/faq/newsgroups.htm</a>
Location	Melb PC Newsgroups & Forum
Convener(s)	Kevin Martin - Evening only 5964-7627 or 0407-343-162

## Programming

Date (Feb-Nov)	<b>Fourth Wed of the month</b>
Time	6.30pm – 9pm
Email	programming@melbpc.org.au
Location	Melb PC HQ, Moorabbin.
Convener(s)	John Viney

Tell us about the programs you are writing, wrote in the past, or give us ideas for interesting programs to write. We'll walk through the process of developing software, from user interface design to writing the code in computer language and testing. Different programming languages, techniques and tools will be showcased as well as scripts, plug-ins, extensions, markups, compilers, databases. Something for beginners and pros alike.

## Raspberry Pi

Date (Feb-Nov)	Fourth Friday of the month
Time	10am – 12 noon
Location	Wadham House, 52 Wadham Parade, Mount Waverley.
Convener(s)	John Hall 9803-2731 Lance Lloyd 9884-5559

## Sunbury — New Users

Date (Feb-Nov) First Thursday of the month  
Time 9.30am – 12noon  
Email [sunburydaytime@gmail.com](mailto:sunburydaytime@gmail.com)  
Webpage <http://sunburydaytime.wix.com/sunbury-pc-club>  
Location Sunbury Senior Citizens Centre (back room),  
8 O'Shannassy Street, Sunbury.  
Convener(s) Kevin Hale 9740-5786  
John Fogarty

## Sunbury — Advanced

Date (Feb-Nov) Second Thursday of the month  
Time 9.30am – 12noon  
Email [sunburydaytime@gmail.com](mailto:sunburydaytime@gmail.com)  
Webpage <http://sunburydaytime.wix.com/sunbury-pc-club>  
Location Sunbury Senior Citizens Centre (back room),  
8 O'Shannassy Street, Sunbury.  
Convener(s) Kevin Hale 9740-5786  
John Fogarty

## Sunbury — Main Meeting

Date (Feb-Nov) Third Thursday of the month  
Time 9.30am – 12noon  
Email [sunburydaytime@gmail.com](mailto:sunburydaytime@gmail.com)  
Webpage <http://sunburydaytime.wix.com/sunbury-pc-club>  
Location Sunbury Senior Citizens Centre (back room),  
8 O'Shannassy Street, Sunbury.  
Convener(s) Kevin Hale 9740-5786  
John Fogarty

## Sunbury — Maintenance & Linux

Date (Feb-Nov) Fourth Thursday of the month  
**AND**  
Fifth Thursday of the month.  
Time 9.30am – 12noon  
Email [sunburydaytime@gmail.com](mailto:sunburydaytime@gmail.com)  
Webpage <http://sunburydaytime.wix.com/sunbury-pc-club>  
Location Sunbury Senior Citizens Centre (back room),  
8 O'Shannassy Street, Sunbury.  
Convener(s) Kevin Hale 9740-5786  
John Fogarty

## Video Inner East

Date (Feb-Nov) Second Monday of the month  
**Incl. June Queen's Birthday**  
Time 7pm – 9pm  
Email [videoinnereast@gmail.com](mailto:videoinnereast@gmail.com)  
Webpage <http://users.tpg.com.au/adslo8nb/vie/index.html>  
Location Copland Room,

Ashburton Library,  
154 High St, Ashburton VIC.  
Convener(s) Richard Balsillie 9809-4116

report by **Richard Balsillie**

At our May meeting **John Thomson** provided news about some exciting and innovative cinema cameras from Canon and from Australian company Black Magic. Other new items included a 360 degree video camera and a robotic tripod head that automatically follows a moving subject. He also demonstrated the new Zoom QA hand held sound recorder that incorporates a wide angle video camera.

Convenor, **Richard Balsillie** showed a video he had made about the history of the town of Stanley, Tasmania (search for "rbalse" on Youtube). He went on to explain how he had acquired copyright free images and music. He also demonstrated how he had used Photoshop Elements to *colour correct* part of a video clip, and to remove people from another.

In the popular "5x5" challenge (5 clips of 5 seconds each) we saw a rescue at sea, some well shot footage of Melbourne and Brisbane, and a "weird" interpretation of a doll museum. Members videos included, a New Orleans street scene, an early piece of scientific equipment being used, a time-lapse of "The Dish" at Parkes, a drone in flight over houses, a monkey destroying a drone that came too close, a mesmerising sculpture at Changi Airport, and a talking chook-house.

## Video Production — Sony

Date (Feb-Nov) Second Wed of the month  
Time 10am – 12 noon  
Location Melb PC HQ, Moorabbin.  
Convener(s) Roger Wragg  
[rdwragg@fastmail.fm](mailto:rdwragg@fastmail.fm)  
Bob Flack

This Special Interest Group specialises in video editing and production using all SONY products, including VEGAS with both the Platinum and Pro versions. We cater for all members from beginners to advanced and work with all video formats from standard definition (SD) up to full high definition (HD) using both tape, DVD, and solid-state video cameras.

The following topics are covered: Sound track production using Sony Cinescore Voice over recording using both Vegas and Sound Forge, Basic picture composition, Lighting for video, Working with Sony DVD Architect to produce both DVDs and blu-ray discs. Upon request, we will look at the conversion of 8mm movie film to a digital format using the groups special conversion equipment.

## Video Production — Pinnacle

Date (Feb-Nov) Fourth Wed of the month  
Time 9.30am - 12 noon  
Location Melb PC HQ, Moorabbin.  
Convener(s) Bill Johnson

## WAFFLE

### (Wine and Fine Food Lovers Event)

Date (Feb-Nov) First Wed of the month  
Time 9.30pm  
(after the Monthly Meeting)  
Email phil@melbpc.org.au  
Location Fongs Chinese Restaurant,  
725 Centre Rd  
(cnr Francesco St),  
Bentleigh East.  
Convener(s) Phil Lew 0418-567-019  
Tom Rado 9807-4072

## WASINT

### (Web and Software Investment Tools)

Date (Feb-Nov) Second Tuesday of the month  
Time 10.30am – 12.30pm  
Email wasint@melbpc.org.au  
Location Melb PC HQ, Moorabbin.  
Convener(s) Richard Solly  
Become more confident in the use of Web and software tools as part of your financial life. Join others, both at the monthly meeting and through the online Web board to share favourite sites and information sources in the exploding field of online financial information.

## Website Design — Tutorials

Date (Feb-Nov) Fourth Sunday of the month  
Time 2pm – 4pm  
Email webdesign@melbpc.org.au  
Location Melb PC HQ, Moorabbin.  
Convener(s) Fleur Stephens 0407-330-963

The aim of the Web Design SIG is to help members build and manage web sites. So if you are creating, managing or designing a web site and need some help, drop in.

## Website Design — Troubleshooting

Date (Feb-Nov) Fourth Sunday of the month  
Time 4pm – 6pm  
Email webdesign@melbpc.org.au  
Location Melb PC HQ, Moorabbin.  
Convener(s) Fleur Stephens 0407-330-963

## Windows Plus

Date (Feb-Nov) Third Saturday of the month  
Time 10am – 1pm  
Email win78@melbpc.org.au (temp)  
Location Melb PC HQ, Moorabbin.  
Convener(s) John Swale 0417-530-766  
Barry Stone

## Wyndham — General

Date (Feb-Nov) Second Monday of the Month  
**Incl. June Queen's Birthday**  
Time 7.30pm – 9.30pm  
Location Room 3, Central Park  
Community Centre,  
Lonsdale Circuit  
(off Franklin Blvd),  
Hoppers Crossing.  
Convener(s) Chris Hughes 9731-0891  
John Healey

This Group exists to provide local information and support to the South-West Region of outer Melbourne. We have Q&A sessions and coverage of PC hardware and software issues. There is a supper break with time for informal discussion. Visitors always welcome

## Wyndham — Multimedia

Date (Feb-Nov) Third Tuesday of the month  
Time 7.30pm – 9.30pm  
Location Room 3, Central Park  
Community Centre,  
Lonsdale Circuit  
(off Franklin Blvd),  
Hoppers Crossing.  
Convener(s) Chris Hughes 9731-0891  
John Healey

## Yarra Ranges

Date (Feb-Nov) Fourth Tuesday of the month  
Time 9.15am – 11:15am  
Email yrig@melbpc.org.au  
Location Japara Living and Learning  
Centre, 54-58 Durham Road,  
Kilsyth.  
Convener(s) Bryan Paten 0429-430-640  
Shane Mason 9733-5390

This Group meets to provide general information and support to members in the outer east region of Melbourne. We have Q&A sessions and coverage of PC Hardware and Software issues, with time for informal discussion. Also, from time to time, we have visiting presenters and demonstrations.

## Yarra Ranges Workshop

Date (Feb-Nov) Fourth Tuesday of the month  
Time 11:30am – 1:30pm  
Email yrig@melbpc.org.au  
Location Japara Living and Learning  
Centre, 54-58 Durham Road,  
Kilsyth.  
Convener(s) Shane Mason 9733-5390  
Bryan Paten 0429-430-640



# Video Inner East

## ***Interested in Making Videos?***

***Video Inner East is an Interest group of Melbourne PC User Group***

*We welcome all people with an interest in the making of videos.*

*Among its members are those new to the activity as well as those with considerable experience and knowledge.*

*We cover a wide range of topics including Camera related equipment, lighting, sound, scripting & narration, use of music etc.*

*We also have a "What's New" segment and a showcase of members videos!*



**All Visitors Welcome !**

### **When?**

Second Monday of every month (excluding January)

### **Where?**

Copland Room- Ashburton Library, 154 High street, Ashburton 3147

### **Time?**

Meeting commences at 7:00pm and normally concludes at 9:30pm  
(Includes a midway tea break)

### **More Information?**

Please contact the SIG (Special interest group) Convenor,  
Richard Balsillie on 9809 4116 or via email [videoinnereast@gmail.com](mailto:videoinnereast@gmail.com)





## MELBOURNE PC USER GROUP INC.

ABN 43 196 519 351  
(Victorian Association Registration No. A0003293V)  
Unit 26, 479 Warrigal Road, Moorabbin Vic 3189 Australia  
Telephone: (03) 9276 4000  
Email: office@melbpc.org.au Web: www.melbpc.org.au

"Members helping Members"

# APPLICATION FOR MOBILE 3G/4G BROADBAND

Name		Membership Number	
Address		Current Contact Email Address	
Suburb	Post Code	Phone	

\* SEE TERMS AND CONDITIONS OVERLEAF. YOU ARE REQUIRED TO SIGN THE TERMS AND CONDITIONS INDICATING YOU HAVE READ AND UNDERSTOOD THEM.

\* Complete all fields on this Mobile Broadband Application. This Information is required for the system database. Incomplete applications will be returned.

## 3G MOBILE DATA PLANS \*more data same price!

3GB	5GB	7GB	9GB	12GB	15GB
<b>\$20</b> PER MONTH First month in advance (\$40), thereafter \$20 on a direct debit on credit card for 12 months. Total spend \$240.00 DEVICE INCLUDED EXCESS DATA USAGE COSTS \$7.50 PER 1GB OR PART THEREOF.	<b>\$30</b> PER MONTH First month in advance (\$60), thereafter \$30 on a direct debit on credit card for 12 months. Total spend \$360.00 DEVICE INCLUDED EXCESS DATA USAGE COSTS \$7.50 PER 1GB OR PART THEREOF.	<b>\$35</b> PER MONTH First month in advance (\$70), thereafter \$35 on a direct debit on credit card for 12 months. Total spend \$420.00 DEVICE INCLUDED EXCESS DATA USAGE COSTS \$7.50 PER 1GB OR PART THEREOF.	<b>\$40</b> PER MONTH First month in advance (\$80), thereafter \$40 on a direct debit on credit card for 12 months. Total spend \$480.00 DEVICE INCLUDED EXCESS DATA USAGE COSTS \$7.50 PER 1GB OR PART THEREOF.	<b>\$45</b> PER MONTH First month in advance (\$90), thereafter \$45 on a direct debit on credit card for 12 months. Total spend \$540.00 DEVICE INCLUDED EXCESS DATA USAGE COSTS \$7.50 PER 1GB OR PART THEREOF.	<b>\$55</b> PER MONTH First month in advance (\$110), thereafter \$55 on a direct debit on credit card for 12 months. Total spend \$660.00 DEVICE INCLUDED EXCESS DATA USAGE COSTS \$7.50 PER 1GB OR PART THEREOF.

☐ **3GB \$210 upfront for 12 month contract on 3G Plan=**  
\$17.50 PER MONTH (EXCESS DATA USAGE COSTS \$7.50 PER 1GB OR PART THEREOF.)

☐ **3GB \$265 upfront for 12 month contract on 4G Plan=**  
\$22.00 PER MONTH (EXCESS DATA USAGE COSTS \$7.50 PER 1GB OR PART THEREOF.)

## 4G MOBILE DATA PLANS (3 to 4 times faster downloads than 3G)

3GB = \$30	6GB = \$40	9GB = \$50	12GB = \$60
PER MONTH \$30 on a direct debit on credit card for 12 months. Total spend \$360.00 EXCESS DATA USAGE COSTS \$7.50 PER 1GB OR PART THEREOF.	PER MONTH \$40 on a direct debit on credit card for 12 months. Total spend \$480.00 EXCESS DATA USAGE COSTS \$7.50 PER 1GB OR PART THEREOF.	PER MONTH \$50 on a direct debit on credit card for 12 months. Total spend \$600.00 EXCESS DATA USAGE COSTS \$7.50 PER 1GB OR PART THEREOF.	PER MONTH \$60 on a direct debit on credit card for 12 months. Total spend \$720.00 EXCESS DATA USAGE COSTS \$7.50 PER 1GB OR PART THEREOF.

## 4G mobile devices: USB modem FREE or BYO Tablet

## BYO PHONE VOICE and DATA \*Available on the 3G or 4G Network.

Do you need more Voice and less data? More data and less Voice? That's not an issue.

PLANS ARE FLEXIBLE ENOUGH TO SUIT ANY NEED, CONTACT THE OFFICE. WE WILL MATCH ANY PLAN, AND BEAT IT

### ☐ **\$35 MONTHLY SIM PLAN on 4G network** (\$420.00 total spend for 12 months, pay monthly)

- Standard calls to friends and family within Australia<sup>^</sup>
- \$500 of included value
- Massive **2.5GB of data!**

**Just bring your own phone and get connected on the Optus network**

**Pricing Information:** The cost of a two minute standard national voice call is \$2.36. The cost of sending a standard national TXT is 30c. Additional data in Australia is 10c/MB (Charge per kB). <sup>^</sup>Includes standard national & international voice & video calls & TXT & PXT; voicemail; calls to 1223, 1225, 13, 15 & 18 numbers; & re-routed calls. Excess data usage, \$7.50 per GB.

### ☐ **\$55 MONTHLY SIM PLAN on 4G network** (\$660.00 total spend for 12 months, pay monthly)

- **Unlimited** Phone calls and texts within Australia (Excluding International calls)
- Standard calls to friends and family within Australia
- Massive **4GB of data!**

**Just bring your own phone and get connected on the Optus network**

Things you will be charged for: Directory assistance (50c per call), Standard national video calling (\$1.00 per minute plus 40c flag fall), 124YES (90c per minute plus \$1.75 flag fall), International calls (See optus.com.au/ international), International SMS (50c per text up to 160 characters), International MMS (75c per MMS), International video calling (\$1.50 per minute + 35c flag fall), Premium talk and text to 19 numbers (Extra charge as advised by that provider) & Excess data usage (\$7.50 per GB).

### PAYMENT DETAILS

\*Authorize a direct debit against your credit card for the requisite amount as required. Cheques only accepted for the 12 month contract amount. And return it to : Melbourne PC User Group. Suite 26, Level 1, 479 Warrigal Road Moorabbin VIC 3189

Name on Card				Signature*				Date / /		Amount	
<input type="text"/>	<input type="text"/>	<input type="text"/>	<input type="text"/>	<input type="text"/>	<input type="text"/>	<input type="text"/>	<input type="text"/>	<input type="text"/>	<input type="text"/>	<input type="text"/>	<input type="text"/>
											Expiry Date

### OFFICE USE ONLY

S/N  | SIM  | WiFi Key

# \*Melb PC Mobile Broadband Internet Terms and Conditions

## A. Definitions

"Melb PC" means Melbourne PC User Group incorporated or its assignee:

"Member" means a financial member of Melbourne PC User Group and includes:

a) "Full Member" A person accepted into the Group after payment of the current full membership fee, or the related Student or Pensioner concession fee.

b) "Family Member" A domiciled spouse, partner, child' or relative of a full member accepted to participate in activities of the Group and use that Member's Internet account after payment of the Family Membership fee; the subscriber" means the MelbPC full member who has accepted the Melb PC Internet Agreement and paid fees for the subscription period and includes both Full and Email account subscribers. (see Level of Description): "subscription periods" means the period in advance for which the subscriber has paid in full being one of the periods of subscription offered by Melb PC from time to time.

## B. Subscription type & Details.

Subscription Type	Annual Fee or Monthly Fee	email & Newsgroup Storage or Mail Quota (Limit)	Browsing	Time Limit	Home Page Storage	Download Limit	When Limit Reached
3G Mobile Broadband 3GB 3G Mobile Broadband 5GB 3G Mobile Broadband 7GB 3G Mobile Broadband 9GB 3G Mobile Broadband 12GB 3G Mobile Broadband 15GB	\$210pa or \$20 pcm \$30 pcm \$35 pcm \$40 pcm \$45 pcm \$55 pcm		Yes			3GB pcm 5GB pcm 7GB pcm 9GB pcm 12GB pcm 15GB pcm	Excess data usage on all plans costs \$7.50 per 1GB or part thereof
4G Mobile Broadband 3GB 4G Mobile Broadband 6GB 4G Mobile Broadband 9GB 4G Mobile Broadband 12GB	\$265pa or \$30 pcm \$40 pcm \$50 pcm \$60 pcm		Yes			3GB pcm 6GB pcm 9GB pcm 12GB pcm	Excess data usage on all plans costs \$7.50 per 1GB or part thereof
4G Voice and Data Plan \$35 4G Voice and Data Plan \$55	\$35 pcm \$55 pcm		Yes			2.5GB pcm 4GB pcm	Excess data usage on all plans costs \$7.50 per 1GB or part thereof
Email account (office365.melbpc.org.au)	\$0	Unlimited	nil		Nil	nil	

The above charges and details are subject to change from time to time. Limits and Time Quota: daily (non-cumulative) plus bonus time in non-peak periods.

Email Account Subscriber (available to all Melb PC Members without charge)

## C. Description of Service(s)

General:

Melbourne PC User Group Inc. A0003293V (Melb PC) Internet Service network (the Network) is a service owned and operated by Melb PC for its members. It is a subscriber-funded service administered by the Internet Management Subcommittee (the subcommittee).

Function of the Melb PC Network: The primary function of the Network is to support the transfer of information to and from Melb PC members and the International community, subject to the terms of this agreement.

Access Software: The subscriber will need to acquire suitable mail, news and Web software from our shareware library or other resources. However, Melb PC makes available a configuration kit that automates his process for those who require it.

Accounts: Accounts are issued only to individuals, not company names; Melb PC may reject an application without stating a reason.

Support: Volunteers offer their help in local newsgroups and via an Internet Help team with interaction through Web Boards, e-mail and direct telephone support.

Duration: The subscription to the Network is for one year from the date of acceptance. It automatically terminates upon expiry of membership of MelbPC if that occurs earlier.

Acknowledgment: Successful applicants will include individuals whose forms are correctly filled out and whose funds have been transferred to the Melb PC Bank account.

Net Etiquette: Melb PC endorses adherence to ("Net etiquette" or "Netiquette") as deemed by the subcommittee from time to time and to prevailing International standards widely accepted as suitable behavior for using the Internet.

## D. Terms of Agreement

- The subscriber asks Melb PC to provide a level of Internet access and Melb PC agrees to do so.
- This agreement starts when an authorized officer of Melb PC has executed it and Melb PC has received a cleared payment for the subscription period.
- If the subscriber renews this agreement for a further subscription period, this agreement applies to the renewed subscription period unless the parties agree otherwise in writing.
- The subscriber acknowledges that:
  - Continuity and speed of the Internet access depends on a wide range of factors many of which are beyond the control of Melb PC.
  - Melb PC has no control over the accuracy of appropriateness of any information on the internet.
  - Melb PC is not responsible for any material available on the Internet.
  - The subscriber's Internet access may be interrupted by equipment failure, the need for routine maintenance peak demand and so on.
  - Melb PC cannot guarantee that the subscriber will be able to secure access at any given time or that fluctuations in demand by other subscribers will not prevent the subscriber from using the full amount of the maximum daily time allowance on any given day.
  - Melb PC cannot guarantee that subscriber's home pages will always be available.
  - Dial up and Mobile Broadband Internet Subscribers are responsible for writing and uploading their own home pages and keeping backup copies of same. Melb PC does not back up these home pages. Subscribers will need to reload their own home pages in the event that the Melb PC facilities suffer any data loss.
  - The right to publish and communicate using home pages is granted to full Internet subscribers in the spirit of user group activities of sharing and furthering the computing experience. The quality of the Melb PC Internet service will be protected by Melb PC reserving its right to suspend the access to any publications of a subscriber who generates a disproportionate amount of Internet traffic. Subject to matters of the kind referred to in the previous clause and to the subscriber's access limits, Melb PC will use its best endeavours to keep Internet access available continuously and to allow the subscriber to have access for the current daily time allowance as set from time to time.
- The subscriber will indemnify Melb PC against any liability, claim, action, suit, demand, loss, cost or expense arising out of or in any way connected with this agreement or Internet access, including without limitation any negligence by Melb PC, its servants or agents.
- The subscriber will pay fees according to Melb PC's standard pricing list from time to time, and a copy of the list certified by an officer of Melb PC is conclusive evidence of the prices applicable at any time.
- Any notice given about any matter concerning this agreement may be given by clicking an accept button following the display of the agreement on a web page, by fax, e-mail or post at the last fax number email or postal address notified to the sender and is deemed to have been received at the time when it would have arrived in the ordinary course of the relevant type of transmission.
- Melb PC may change any term of this Agreement or make additional rules at any time by means of notification delivered in accordance with clause 9. Subscriber may refuse to accept any such change and terminate or her Internet access and receive a pro-rata refund for any paid subscription if a request to this effect this received within 14 days from the deemed receipt date of a notice of changes. Should a subscriber continue to keep using the service past the date of the notice deemed received as described in clause 9, the subscriber shall be deemed to accept the changes. A copy of the rules certified by an officer of Melb PC is conclusive evidence of the rules applicable at any time. The rules from time to time will apply as if they were set out in full as terms of this agreement.
- The subscriber must not deliberately or recklessly do anything that damages Melb PC's equipment, software, setup or services.
- The subscriber must not use Internet access to annoy, harass or harm other Internet users including sending of viruses either wittingly or unwittingly and the sending of spam or unsolicited bulk email.
- The subscriber must not use Internet access for any unlawful purpose or in any unlawful manner.
- Melb PC does not review any publications or communication and does not verify, endorse, or otherwise take responsibility for the content of same.
- Subscribers are legally responsible for their own publications and communications.
- The subscriber will keep safe and confidential any access numbers; codes or passwords allotted to them by Melb PC and notify Melb PC without delay of any compromise of that information.
- Melb PC may suspend or terminate the subscribers Internet access immediately if the subscriber breaches this agreement wittingly or unwittingly or fails to promptly pay any money owed to Melb PC or ceases to be a member of Melb PC.
- Melb PC may delete without notice any material found on its storage disks without giving any reason for doing so.
- Melb PC may make and keep any record it requires for the purpose of this agreement or the rules or for the operation of its services or as required by the law or its officers.
- The subscriber must not transfer, sell or share internet access rights, or allow the account to be used by any other person, other than those Melb PC Family Members who are listed on this application and have paid the relevant charges.
- The user's last name must be displayed in all e-mail and news messages. The user's first name or initials may be displayed as desired.
- Commercial traffic, in the form of private messages and advertisements in newsgroups designated for that purpose, is permitted within the bounds of Net etiquette.
- The 'Organisation' field in private email or public newsgroup article headers must always be Melbourne PC User Group Australia, the name of the service provider. Any other organisation or business name is permitted only in the four-line (maximum) "signature" text that is optionally inserted at the end of the message or article.
- The "From" field used in email and news messages may be the Melb PC assigned email address. e.g. j.jones@melbpc.org.au or a "Spam-trap" address, e.g. j.jones@notspam.org.au or, subject to Clause 22 an external address. e.g. j.jones@hotmail.com.
- Melb PC may assign its rights and obligations to full Internet Subscribers under this agreement to an Internet access provider that is of equal standard to Melb PC and after notice of assignment is given to the subscriber, this agreement shall have operation as if it had been entered into between the assignee and the subscriber and Melb PC's rights (except for its right to recover any money owed to it immediately before the assignment) and obligations under this agreement shall be at an end. Services to Associate internet Subscribers shall be limited to the period Melb PC is able to provide them from its own resources.
- The parties submit to the law of Victoria, Australia in relation to any the interpretation of this agreement, or any dispute arising out of it.
- To the extent permitted by law and except as expressly provided to the contrary in this Agreement, all warranties whether express, implied, statutory or otherwise, relating in any way to the subject matter of this Agreement or to this Agreement generally, are excluded Where legislation implies in this Agreement any condition, or warranty and that legislation avoids or prohibits provisions in a contract excluding or modifying the application of or the exercise of or facility under such term, such term shall be deemed to be included in this Agreement. However, the liability of Melb PC for any breach of such term shall be limited at the option of Melb PC, to any one or more of the following if the breach related to goods, the replacement of the goods or the supply of equivalent goods; the repair of such goods; the payment of the cost of replacing the goods or of acquiring equivalent goods, or the payment of the cost of having the goods repaired; and if the breach relates to services the supplying of the services again; or the payment of the cost of having the services supplied again. To the extent permitted by law and except as expressly provided to the contrary in this Agreement Melb PC shall not be under any 'liability (contractual, tortious or otherwise! to subscriber in respect of any loss or damage (save for only personal injury and death) howsoever caused. which may be suffered or injured or which may arise directly or indirectly in respect to the supply of goods or services pursuant to this Agreement or the act, failure or omission of Melb PC.
- Accounts may be suspended without notice to stop transmission of network packets that threaten or have the potential to threaten the security or normal operation of any computer or device on the local or wider network. Such packets are categorised solely by the Internet Management Subcommittee. Users of accounts suspended without notice will be advised by telephone or writing within two working days of the nature of the packets originating from their account. Lifting of the suspension will require the registered account holder to provide evidence of confirmed action being taken to prevent further the transmission of such threatening or potentially threatening packets.
- The Description of Service "Internet Access Agreement" and the services as described on this application form constitute the entire agreement between the partner and neither of them relies on any term, condition, warranty, collateral contract, representation or promise not set out in those parts of these forms.
- Authorised by Melb PC Committee, 1<sup>st</sup> September 2013

I have read the terms and conditions

## MEMBERSHIP APPLICATION FORM

Title	First Name	Last Name
Business Name		
Address		
Suburb		Post Code
Phone		Mobile Number
DOB	Preferred Email Address	

### SUMMARY

**Individuals** \$95 ☐

**Additional Family Members** \$25 ☐  
(Spouse and children)

**Pensioners/** \$80 ☐  
**Adult students A (25+)\***

**Students B (14-25 yrs.)** \$35 ☐

**Corporate** \$190 ☐  
(One membership is two representatives)

**TOTAL:**

\$

### Additional Family Members or Corporate Representatives (Maximum 2 names)

Title	First Name	Last Name	Phone
Title	First Name	Last Name	Phone
Title	First Name	Last Name	Phone
Title	First Name	Last Name	Phone

**Please provide emergency contact details below.**

Full Name.

Phone no.

Referred by member: \_\_\_\_\_ full name or membership number /SIG\_\_\_\_\_

### Terms and conditions

- Adult students A must attach a photocopy of their student card or letter from their educational institution confirming full student status.
  - All student B members must have a Student Card and have evidence of their age at time of joining.
  - Pensioners must attach a photocopy showing both sides of their Centrelink Pension Concession Card.
- Change of family member(s) must be identified in writing to the club secretary.

**I hereby apply for membership of Melbourne PC Users Group Inc. (A000329V) and agree to abide by its rules while I remain a member.**

Signature \_\_\_\_\_

Date \_\_\_\_/\_\_\_\_/\_\_\_\_

### Payment Details

Name on Card	Expiry Date
Credit Card Number	
Signature	Date ____/____/____

### Email User Name Selection

List the user ("login") names you would like in order of preference. Write very clearly, to avoid our confusing certain letters. User names are expressed in lower case letters and must represent your real name in some recognisable way e.g. "John J. Jones" might request user names such as "john", "johnj", "jjones", etc. Any user name that is already allocated or deemed unsuitable in the opinion of the system administrators will not be allocated.

Choice 1. \_\_\_\_\_@melbpc.org.au

Choice 2. \_\_\_\_\_@melbpc.org.au



# Membership Drive

## Introduce a new member\* to Melbourne PC User Group and receive credit towards your membership fees.

Did you know that Melb PC held its first meeting in November 1983?

Yes! it's true.

The group flourished and in 1993 started its own Internet service, becoming one of the founding suppliers of the Internet in Australia, and it is still a licensed ISP. Melb PC is Australia's largest and most active personal computer/technology group with thousands of members participating in more than 40 Special Interest Groups (SIGs) that meet regularly throughout Melbourne.

New members will receive all the benefits you already enjoy – the digital newsletter, the help lines, the Special Interest Groups (SIGs), the Monthly meetings and access to mobile broadband, personal email or IP4 Rental/Web Hosting/Private email Hosting, Microsoft OS discounts and you will be helping your club to grow.

You know how much you enjoy being part of Melbourne PC User Group. So why not bring along a friend to enjoy it too? Prospective new members are always warmly welcome at the Monthly Meeting and SIG Meetings.

Each new member\* you enrol gives you three months credit towards your membership renewal. (approx. \$24.00 value against a full membership). The more new members you enrol, the more credit towards your next membership renewal.

(\* This does not include Family members or anyone re-joining within 12 months of leaving Melb PC).

### INVITATION

#### Interested in Computers and Technology?

You are invited to attend the Monthly Meeting of

Melbourne PC User Group

on the first Wednesday of each Month

Unit 26, 479 Warrigal Road, Moorabbin (Melways 78 C8)

#### PROGRAM

- **Q&A with Barry Martin**—your computer questions answered
- **Presidents Report**—Harry Lewis update on club news
- **Presentation**—one or two relevant presentations by Guest speakers on technology news.



# Meetings In June 2015

Sunday	Monday	Tuesday	Wednesday	Thursday	Friday	Saturday
	<b>1</b>	<b>2</b> <b>North East Genealogy</b> <i>(Ivanhoe 10am - 12noon)</i>	<b>3</b> <b>Monthly Meeting</b>  Melb PC H.Q. Moorabbin 7pm - 9.30pm	<b>4</b> <b>Ballarat</b> <i>(7.30pm - 9.45pm)</i> <b>Sunbury Daytime</b> <i>(New Users 9.30am - 12noon)</i>	<b>5</b> <b>Essendon</b> <i>(Main Meeting 9.30am - 12noon)</i> <b>Multimedia and Home Entertainment</b> <i>(Wadham House Mt Waverley - 10am - 12noon)</i>	<b>6</b>
<b>7</b>	<b>8</b> <b>Access (database) and Excel</b> <i>(6.30pm - 8.30pm)</i> <b>Video Inner East</b> <i>(Ashburton Library 7pm - 9.30pm)</i> <b>Wyndham</b> <i>(Hoppers Crossing General 7.30pm - 9.30pm)</i>  <b>Public Holiday Queen's Birthday</b>	<b>9</b> <b>WASINT (investing)</b> <i>(10.30am - 12.30pm)</i> <b>Linux Workshop</b> <i>(4pm - 7pm)</i> <b>Linux</b> <i>(7pm - 9pm)</i>  Melb PC Committee	<b>10</b> <b>Video Production Sony</b> <i>(10am - 12noon)</i> <b>Communications</b> <i>(7pm - 9.30pm)</i> <b>Microcontroller</b> <i>(7pm - 9.30pm)</i>	<b>11</b> <b>East</b> <i>(Eley Park Community Centre - Blackburn South 7.30pm - 9.30pm)</i> <b>North East Daytime</b> <i>(Includes Photography &amp; Digital Imaging Ivanhoe 10am - 12noon)</i> <b>Sunbury Daytime</b> <i>(Advanced Users 9.30am - 12noon)</i>	<b>12</b> <b>Casey</b> <i>(Narre Warren Library 12.30pm - 3pm)</i> <b>Essendon</b> <i>(Open Forum 9.30am - 12noon)</i> <b>Hardware</b> <i>(Wadham House Mt Waverley - 10am - 12noon)</i>	<b>13</b> <b>Microcontroller Workshop</b> <i>(12noon - 5pm)</i>
<b>14</b> <b>East Workshop</b> <i>(Wadham House Mt Waverley 10am - 2pm)</i>	<b>15</b> <b>North Suburbs Linux</b> <i>(7.30pm - 9.30pm)</i> <b>Mornington Peninsula</b> <i>(Mornington General inc Q&amp;A 9.30am - 12noon Digital Imaging 12.30pm - 2pm Family History 2pm - 4.30pm)</i>	<b>16</b> <b>Wyndham</b> <i>(Hoppers Crossing Multimedia 7.30pm - 9.30pm)</i>	<b>17</b> <b>North East Android</b> <i>(Ivanhoe 10am - 12noon)</i>  <b>Deadline for July 2015 Newsletter Articles.</b>	<b>18</b> <b>Music</b> <i>(7.30pm - 9.30pm)</i> <b>Bayside</b> <i>(Brighton 10am - 12noon)</i> <b>Sunbury Daytime</b> <i>(Main Meeting 9.30am - 12noon)</i>	<b>19</b> <b>Essendon</b> <i>(Check website for meeting details. 9.30am - 12noon)</i> <b>Digital Images</b> <i>(Includes Photoshop Wadham House Mt Waverley - 10am - 12noon)</i>	<b>20</b> <b>Windows Plus</b> <i>(10am - 1pm)</i>
<b>21</b> <b>MACE (Atari computers)</b> <i>(10am - 2pm)</i> <b>Beginners East (Beast)</b> <i>(Vermont South 10am - 12.30pm)</i> <b>Genealogy East</b> <i>(Vermont South 1pm - 3.30pm)</i> <b>Macedon Ranges</b> <i>(Gisborne 2pm - 4pm)</i>	<b>22</b>  <b>Deadline for July 2015 Newsletter SIG Reports.</b>	<b>23</b> <b>Yarra Ranges</b> <i>(Kilsyth - Meeting 9.15am - 11.15am Workshop 11.30am - 1.30pm)</i>	<b>24</b> <b>Programming</b> <i>(6.30pm - 9pm)</i> <b>Video Production Pinnacle</b> <i>(9.30am - 12noon)</i> <b>Essendon</b> <i>(Multimedia/General 7pm - 9pm)</i>	<b>25</b> <b>Sunbury Daytime</b> <i>(Maintenance &amp; Linux 9.30am-12noon Meeting also held on a 5th Thursday Maintenance &amp; Linux 9.30am-12noon)</i>	<b>26</b> <b>Casey Workshop</b> <i>(Narre Warren Library 12.30pm - 3pm)</i> <b>Raspberry Pi</b> <i>(Wadham House Mt Waverley - 10am - 12noon)</i>	<b>27</b> <b>Hardware Workshop</b> <i>(10am - 12noon)</i> <b>Microcontroller Workshop</b> <i>(12noon - 5pm)</i>
<b>28</b> <b>Everything Apple</b> <i>(2pm - 4pm)</i> <b>Website Design</b> <i>(2pm - 6pm)</i>	<b>29</b>	<b>30</b>	<div> <b>Colour Codes</b>  <b>Black:</b> SIG meetings at Melb PC H.Q. Moorabbin.  <b>Blue:</b> SIG meetings held at other locations.  <b>Dotted Box:</b> No SIG meeting held this month.         </div> <div> <b>Have A Question</b>  <b>Post it on Yammer</b>  <a href="http://yammer.com/melbpc.org.au/">http://yammer.com/melbpc.org.au/</a> </div> <p>For information on "Special Interest Group" activities and meeting times see the group details in PC Update or go to <a href="http://stg.mpcug.net.au/">http://stg.mpcug.net.au/</a>.</p>			