

Official Magazine of the MELBOURNE PC USER GROUP INC.

# PC UPDATE

# Is it safe to go on the Internet?



Plus:  
Kaleidoscope  
Car Head-Up Display  
Random Access and Q&A



[www.melbpc.org.au](http://www.melbpc.org.au)



## MELB PC PURPOSES

THE PURPOSES OF THE GROUP are to conduct, on a non-profit basis, activities aimed at the effective utilisation of the personal computer and to endeavour to achieve this by:

- Advancing computer literacy
- Advancing the art and science of information processing through education and interchange of ideas
- Keeping members abreast of developments in computing and information technology and enabling members to exchange information and experience
- Representing computer users in public debate and by acting and speaking on their behalf where they would be affected by proposed legislation or other regulatory measures
- Providing a forum for the exchange of views among computer users and between computer users and the computer industry
- Co-operating supporting or joining with, or in, other organisations with similar purposes
- Undertaking other activities beneficial to the Group

In order to further its purposes the Group shall have the rights, powers and privileges of a natural person.

# PC UPDATE

MAY 2014 • VOLUME 31 • ISSUE 3

## EDITOR/ART DIRECTOR

Katharine Shade, CCE Design

[editorpc@melbpc.org.au](mailto:editorpc@melbpc.org.au)

## CONTRIBUTORS

Paul Addis, Clive Chatfield, Norman Elliman, Craig Evans, Susan Jensen, Geoffrey Keenan, C. Knight, Lance Lloyd, Tim McQueen, Jean de Neef, Julie Parkes, John Sapsford, George Skarbek, John Swale, Henk Visscher

## SUBEDITING/PROOFING/CHEER SQUAD

Stephen Lake, Harry Lewis, Lance Lloyd, Tim McQueen, Julie Parkes, Selma Seknow, Gary Taig

## TECHNICAL ADVISORS

Roger Brown, Kevin Martin, Malcolm Miles, Dennis Parsons

## SIG COORDINATOR

Norman Elliman

## CALENDAR AND MAPS

John Swann

## PUBLISHED BY

### MELBOURNE PC USER GROUP INC.

Suite 26, Level 1, 479 Warrigal Road  
Moorabbin, VIC 3189

Office hours	9am-5pm
Phone	(03) 9276 4000
Email	<a href="mailto:office@melbpc.org.au">office@melbpc.org.au</a>
Office Manager	Dianne Vogt
Junior Staff	Lauren George, Amber Scarff

## COPYRIGHT

Melbourne PC User Group Inc. reserves all copyright in the content and design of *PC Update* (this publication).

*PC Update* must not be republished in whole or in part using print, electronic or any other formats (including optical and flash media together with the Internet).

You may make a copy of part or all of *PC Update* on your local computer for your own use, and print a hard copy of *PC Update* for your own use, provided that you do not remove any copyright notice on any page. You may not, in any form, or by any means:

- cause any of the material in the *PC Update* to be framed or embedded in a website,
- commercialise any material in *PC Update*,

- otherwise reproduce, adapt, store in a retrieval system, transmit, print, display, perform, publish or create derivative works from any part of the content or design of *PC Update*, except with our prior written consent or as permitted by applicable copyright legislation.

Members who breach copyright will forfeit their membership rights and may be subject to legal action from the authors and copyright holders.

Copyright © 2014 Melbourne PC User Group Inc. and individual authors. Except where otherwise stated, all material is the copyright of the author. Contributions from authors may not be copied without the author's prior written permission.



Cartoon	Terrible Lizard – C. Knight.....	3
Melb PC	Directory .....	4
Columns	<i>PC Update</i> Editor's Report – Katharine Shade .....	5
	Melb PC President's Report – Harry Lewis .....	6
Melb PC	Membership Survey – Lance Lloyd .....	7
Articles	Security Threats – Katharine Shade .....	8
	A successful attempt (just) to dual-boot Xubuntu and Microsoft Windows 8.1 – Tim McQueen .....	11
	Image Effects: Kaleidoscope – Henk Visscher .....	12
	Preparing a New Windows 7 Installation – Geoffrey Keenan .....	16
Review	Car Head-Up Display – George Skarbek .....	18
Columns	Random Access – John Swale .....	20
	Q&A – George Skarbek.....	22
	Hints and Tips .....	24
SIGS	Local/General and Special Interest Groups.....	25
	Group Reports .....	26
	Group Details .....	32
Melb PC	Notices.....	38
	Committee .....	39
	How to Get Help .....	40
	Application Forms .....	45
	Calendar.....	48

## Terrible Lizard



© 2014 C. Knight



**iHELP** (See [Page 40](#) for more details.)

## **iHelp**

The main iHelp system for Melb PC members:

<http://ihelp.melbpc.org.au/helpdesk/iuser/index.asp>

## **First Aid and Internet Help Line**

For simple and urgent problems.

(03) 9276 4088, Monday to Friday 10am – 3pm.

If no web page access.

## **Dial Help**

Volunteer list: <http://www.melbpc.org.au/help/>

## **ONLINE SERVICES**

### **Melb PC Home Page**

<http://www.melbpc.org.au>

### **Internet Services Page**

<http://www.melbpc.org.au/isp/>

## **MANAGEMENT COMMITTEE**

### **President**

Harry Lewis

### **Vice-President**

Charles Wright

### **Treasurer**

Geoffrey Keenan

### **Secretary**

Ian Rankin

### **Members**

Norman Elliman Don McKenzie

Phil Lew Roger Wragg

Lance Lloyd

To contact a member of the Committee,  
please go to:

<http://melbpc.org.au/CommitteeContacts>

## **HONORARY LIFE MEMBERS**

Ray Beatty

Lloyd Borrett

Dave Botherway

Douglas Brooke

Sean Clarke

Thomas Coleman

William Dair

Guiseppe De Simone

Bruce Elliott

Bill Ford

John Hall

Stan Johnstone

Philip Lew

Barry Martin

Barry McMenomy

John Morris

Ash Nallawalla

Ian Rankin

George Skarbek

Peter Smith

Richard Solly

John Swale

Gary Taig

Ken Thomas

David Webster

Glen Webster

Ian Webster

Yvonne Webster

Charles Wright

## **SUBMISSIONS**

Email your submissions as file attachments to [editorpc@melbpc.org.au](mailto:editorpc@melbpc.org.au). Standard document formats are accepted (e.g. .txt, .rtf, .doc, .docx). Please keep formatting to a minimum.

Accompanying graphics should be separate high-quality JPG or PNG attachments – NOT embedded in the document.

Members' free ads must be technology related and include the member's full name.

## **AUTHOR RELEASE**

All authors must lodge a completed submission form, available from <http://ccedesign.com.au/melbpc/release-form>.

## **SUBMISSION DEADLINES**

July 2014 issue:

10 June (17 June for SIG reports)

Unless other arrangements are made with the editor.



# PC Update Editor's Report

## May 2014

By Katharine Shade

[editorpc@melbpc.org.au](mailto:editorpc@melbpc.org.au)

There's currently a significant threat to online security: Internet Explorer, HeartBleed and Windows XP. Go and read our coverage starting on [Page 8](#).

No, really, take a look and then come back ....

Got all that? There'll be a test at the end of this report.

With most of our computers connected to the Internet, we're long past the days of being able to just switch on a PC, use it and switch it off again.

There are vital steps which need to be taken to prevent more and more people having their identities stolen, bank accounts drained, their computers taking part in spam and Denial of Service (DOS) attacks, and devices just not working.

And it's no longer just our PCs – with so many devices now attached to Wi-Fi networks, we need to take care of them all.

There was a case recently of a someone getting into a Wi-Fi network via a baby video monitor. The parents went into the baby's room when they heard an adult's voice in the middle of the night, saw the baby monitor swivel around towards them, and discovered that someone was yelling obscenities at their baby through the monitor. As well, web-connected Hi-Fi systems and at least one "smart fridge" have recently been involved in sending out waves of malicious emails.

These devices tend to have low levels of security, so can be used as a launching off point to getting into your entire network.

Melbourne PC User Group, through its magazine, Interest Groups, help facilities and online forums, is well placed to help this little corner of the world be a

bit more creep-free. For every member who learns about the latest security dangers and how to practise "safe computing", they can pass on their knowledge to many others. Who else is the tech support person for at least some of their family and friends?

Now for our test:

1. If you're currently using IE, what browser will you be using tomorrow? (Answering "IE" is an automatic fail.)
2. On a scale of 1 to 10, what did security expert Bruce Schneier score HeartBleed?
3. How long has the HeartBleed bug been around?
4. What operating system is the city of Munich, Germany, encouraging all its businesses and residents to use?

If you don't know the answers, please read those pages again. Now to put this issue of *PC Update* to bed, get something to eat from my "dumb" fridge and read a book (a dead-tree one, not electronic). ☺



### Letter

Dear Editor,

The article by Greg Skalka on the overuse of the word "book" was very informative.

To add to the list: Bookkeeper – the person to whom you LOAN a fabulous book you want to share but you never see that book again.

Bookkeeper has a dual definition in that it can also be the person who "cooks the books" at BAS time and tax time.

– Selma Seknow

### STOP PRESS: Business Broadband Internet 3G modem setup changes

As we were going to press, news reached us that affects Melb PC members using the Group's Optus Business Mobile Broadband Internet services. Changes to the Optus network are being rolled out that will required adjustments to modem settings (we're told that only 3G modems should be affected).

If you find that your modem suddenly loses its Internet connection, please phone Internet Help First Aid: (03) 9276 4088 (10am-3pm, Monday-Friday).



# Melb PC President's Report

## May 2014



**By Harry Lewis**

### Updates

This month sees a major step forward in the long-planned move of our Internet services.

We are re-shaping the strategy for developing our new website with a focus on well-defined volunteer roles.

Our new email service is working well for our members; the demand for support has fallen to a trickle. It is still important for all members who wish to use their Melb PC email addresses to Activate their new accounts if they have not yet done so.

The arrangement with *PC Update* alternating with our Newsletter is in place and will continue up to the September issue of *PC Update*, with a review towards the end of that period.

We have been extending the reach of our monthly meetings by streaming video of the meeting in real time, and by offering the video segments as downloads from our website. The facility to view the meeting on the monthly disc is still available and welcomed by many members.

We have had three fascinating and well-received

presentations from visiting speakers during 2014, and the first of what is to be a regular series of presentations from a SIG speaker, by Jan Weiner, which was also very well received. Please send in your suggestions and offerings for both types of presentation so that we can maintain the momentum.

### Move of Melb PC Internet services from Burnley

As this is being written, we have just purchased a key item of equipment which will enable us to host our legacy Internet services at our Moorabbin headquarters. By the time you read this, the process of replicating the services at Moorabbin will be under way. When we switch over after testing, there should be a seamless transition and members will not notice any change.

The transfer of our other Internet services from Burnley will have no impact on our email service.

### New Melb PC website

Thanks to Craig Mattson's production system, pages for our new website can be written without special technical skills.

We now need volunteers to review the content of our old website. We have identified three main areas: the Group (Melb PC); News and current events; and Archives. The first area, the Group, includes our description of Melb PC, its services, regular activities, and the means to take up or renew membership. It is here that most of the pre-launch work is required.

Volunteers will work in small teams assigned to different sub-areas and pages on the site. The task will be to decide which pages need to be updated, which can be kept with their present content, and which can be excluded. The focus is on the content.

Individual volunteers are asked for a modest contribution of time, 3-4 hours/week for a month or so. They will be working from home.

Please volunteer: send an email message to [president@melbpc.org.au](mailto:president@melbpc.org.au). ☺

### Monthly Meeting Live Streaming

The Monthly Meeting will be streamed live over the Internet as of May's monthly meeting on Wednesday 7 May 2014.

The URL is <http://tv.mpcug.mobi> and the streaming runs from 7-9 pm with a break of 20 minutes or so in the middle.

### Monthly Meeting Videos for Download

Members will also be able to access videos of the meetings after they have occurred.

Currently we have the videos from the April 2014 Monthly Meeting in four parts uploaded at <https://websec.melbpc.org.au/videos/>. Access them using your Melb PC username and password.



# Melb PC Membership Survey

## It's getting results!

By Lance Lloyd

Thanks to Charles Adams, Naomi Gruneklee and members of the Melb PC Committee, we have been able to undertake an online survey of our members on their computer use, opinions and suggestions for the club.

This online survey is short and easy to complete. It's designed to obtain information to help Committee formulate plans and, in particular, to assist in retaining existing members and attracting new members. The survey is found here: <https://www.surveymonkey.com/s/53WJJ66> and (seriously) takes only about five minutes to complete.

At the time of writing this article we have received almost 200 replies but we need many more! Have you filled it in yet? If not, please go to the URL above and complete the survey.

So far we have found that most members have Desktop PCs with Windows 7, but some have several devices with different operating systems.

More importantly, members have told us why they are members and what Melb PC services

they use. Especially valuable are the comments people are providing to the following questions:

Question 6. What other services/benefits or improvements to existing services/benefits do you want from Melb PC?

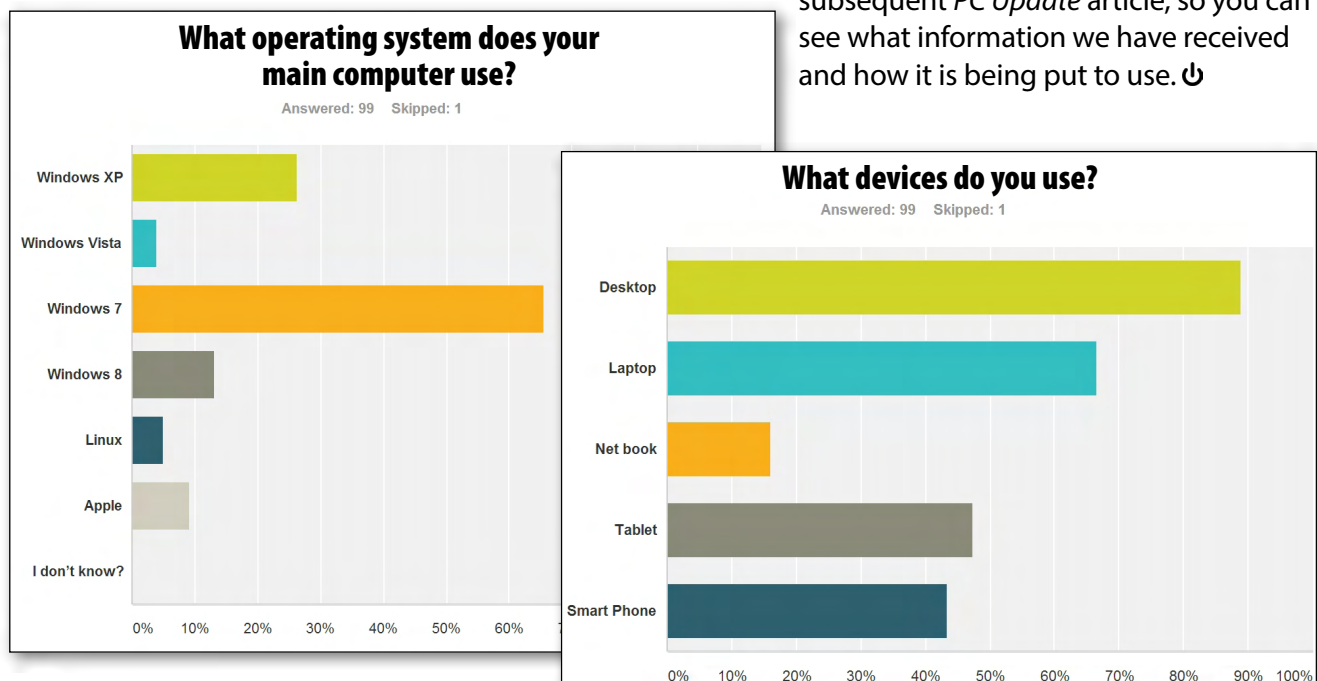
Question 9. Do you have suggestions for topics and/or speakers for Monthly Meetings at Moorabbin or at your local SIG?

Question 10. Comments, ideas, suggestions, offers, other? Name and Phone numbers if you are able and willing to be contacted.

Answers have given helpful ideas about topics for seminars and services that members would like, as well as recruiting some additional volunteers.

Also of interest is the request for services which we are already providing, such as the new facility to live stream the monthly meeting into the comfort of your local SIG or your home PC (see details on [Page 6](#)).

Please fill out the survey if you have not already done so. We will provide a full report in a subsequent *PC Update* article, so you can see what information we have received and how it is being put to use. ☺





# Security Threats

By Katharine Shade

## Stop using Internet Explorer NOW

### What's going on?

On 28 April the Australian, British and U.S. governments gave an unprecedented blanket advisory for computer users to avoid Microsoft's Internet Explorer and consider using alternative browsers until the company fixes a security flaw that hackers have used to launch attacks.

Cybersecurity firm FireEye, which took credit for identifying the flaw, said hackers were exploiting the bug in a campaign nicknamed "Operation Clandestine Fox". Affected are all current versions of IE (versions 9 – 11), making up over a quarter of the total browser usage globally.

Microsoft says that an attacker who successfully exploits the vulnerability could gain the same user rights as the official user. They have addressed the issue in a security advisory post and say they are "working on a patch" to resolve the issue.

### How does it work?

The problem is a remote code execution vulnerability. It exists in the way that Internet Explorer accesses an object in memory that has been deleted or has not been properly allocated. The vulnerability may corrupt memory in a way that could enable an attacker to execute arbitrary code within Internet Explorer.

In a web-based attack scenario, an attacker could host a specially crafted website that is designed to exploit this vulnerability through Internet Explorer. In addition, compromised websites and websites that accept or host user-provided content or advertisements could contain specially crafted content that could also exploit this vulnerability.

In all cases, however, an attacker would have no way to force users to visit these websites. Instead, an attacker would have

to convince users to visit the website, typically by getting them to click a link in an email message or Instant Messenger message that takes users to the attacker's website.

Such attacks, dubbed "drive-bys," are among the most dangerous because a vulnerable browser can be hacked as soon as its user surfs to the URL.

FireEye said the hacker group behind the IE exploit is a sophisticated gang that has launched browser-based attacks in the past.

### What's that in English?

By convincing a user to view an infected document (e.g. a web page, email message or attachment), an attacker may be able to execute code which will give them access to your computer.

Microsoft said in the advisory that the vulnerability could enable a hacker to take complete control of an affected system, then do things such as viewing, changing, or deleting data, installing malicious programs, or creating accounts that would give hackers full user rights.

### What should you do about it?

Use an alternative browser such as Firefox or Chrome until Microsoft comes out with a patch. At which point you may wish to stay with that browser anyway.

If you don't have a choice due to the specific needs of some websites or if you are locked into IE at your workplace, it is strongly suggested you download Microsoft's Enhanced Mitigation Experience Toolkit version 4.1 (<http://www.microsoft.com/emet>) that will enable your IE browser to run in an enhanced security mode to reduce your exposure to attack.

Also, set your Internet Explorer 'Security Zone' settings to "High" under Tools > Internet Options > Security tab.

In addition, the exploits rely in part on the presence of Adobe Flash Player. So disabling the Flash plug-in within IE will help prevent the exploit from functioning. If you do have Flash running, make sure it is the latest version.

And be very cautious about clicking links in emails!





## HeartBleed

### What is HeartBleed?

HeartBleed is a bug in Open SSL, which is the method a server and you use to securely encrypt your communications back and forth. It is present when you see the little padlock in your browser and the URL begins with HTTPS. Open SSL is free and maintained by a small team of volunteers, and a bug slipped through which was only discovered and made public on 7 April.

### How did it get its name?

This bug is in the OpenSSL's implementation of the TLS/DTLS (transport layer security protocols) heartbeat extension (RFC6520). When it is exploited it leads to the leak of memory contents from the server to the client and from the client to the server.

### What can the bad guys do with it?

They can extract valuable information, such as usernames and passwords, or even decryption information.

### Is it new?

The HeartBleed vulnerability has actually been around for about two years, and due to the nature of the bug it's impossible to say how much it has been exploited during this time or if your data has been compromised.

### How is it relevant to Melb PC members?

Pretty much anyone who has used the Internet in the last two years is at risk of being affected by the BleedingHeart bug as Open SSL is used so widely by web sites.

For example, Facebook, Twitter, Flickr, LinkedIn, Gmail, Yahoo, GoDaddy, Dropbox, YouTube and Wordpress.

The tricky thing is that until all websites have patched the bug, you

could be left vulnerable again if you visit one of their sites, even after you've changed your passwords.

### Why isn't it patched yet?

Organisations have to decide whether to have all SSL certificates reissued or wait for current certificates to expire. It takes time to revoke and reissue a lot of certificates, possibly weeks.

### Is it really that bad?

Yes. Writing about HeartBleed, security expert Bruce Schneier says "'catastrophic' is the right word. On the scale of 1 to 10, this is an 11." (<https://www.schneier.com/blog/archives/2014/04/heartbleed.html>)

### What should you do about it?

You can't do anything about the bug itself – that's a matter for Sysadmins to sort out on the server end.

But it's important that you change all of your most important passwords, such as those for banking, email and social network sites.

The best way to administer your large number of high-quality passwords, particularly if up until now you've used the same one for multiple sites, is to use a password manager such as LastPass (<https://lastpass.com>) or 1Password (<https://agilebits.com/onepassword>). They'll even generate those hard-to-remember but highly-secure passwords like 1f18sPs9dR4xaWp. Just remember one master password and it'll do the rest.

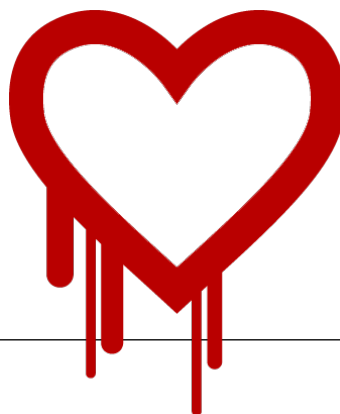
Before rushing into changing all of your passwords though, it's worth waiting to make sure that each service you use has applied the patch, so that you don't have to change your passwords a second time.

If you use Firefox or Chrome, they have browser extensions that check for HeartBleed

(<http://www.techsupportalert.com/content/firefox-and-chrome-browser-extensions-check-heartbleed.htm>).

Also, use two-step authentication if it is available, which requires you enter a

[...continued]





[...continued]

code texted to your mobile phone every time you log into a service from a new computer or device.

As always, keep a very close eye on your bank and credit card statements; check them frequently online rather than waiting for them to be sent by snail or email at three or six-monthly intervals.

## More information

- <http://heartbleed.com>
- <http://www.troyhunt.com/2014/04/everything-you-need-to-know-about.html>
- <http://blog.lastpass.com/2014/04/lastpass-now-checks-if-your-sites-are.html>
- <https://xkcd.com/1353/>

## It's time to go Windows XP

As if we don't have enough to worry about when it comes to our computer vulnerabilities, it is becoming increasingly clear that those who stay with Windows XP are leaving themselves open to more and more exploits.

And don't even think about using Internet Explorer on Windows XP – you're facing a triple threat as it is very open to malware on that operating system, in addition to the recently discovered IE flaw which will never be patched on XP, plus of course the vulnerability of Windows XP itself.

Microsoft offers a Windows 8 Upgrade Assistant to help users figure out whether their hardware can support Windows 8 <http://windows.microsoft.com/en-us/windows-8/upgrade-assistant-download-online-faq>. (Microsoft no longer offers the similar Windows 7 Upgrade Advisor, but the minimum hardware requirements for Windows 7 and Windows 8 are nearly identical.)

The government of Munich, Germany, has an

interesting approach: switch the entire city over to the Ubuntu Linux operating system. They have adopted a fairly aggressive stance on getting XP users switched over to Ubuntu. In addition to linking users to a free Ubuntu download via its website, city officials have distributed 2000 CDs of the operating system to Munich libraries.

The City of Munich actually voted to switch all government systems to Linux more than a decade ago, doing its best to excise Microsoft from city computers over the last 10 years.

Although it can be a real pain to change over computer systems, if you're stuck on a dinosaur Windows XP computer you'll be amazed at how much more productive and less frustrated you'll be on a speedy new system that isn't clogged down by years of software installations, full hard drives and outdated drivers and software (and possibly malware).

You could opt for a refurbished computer to keep the costs down, which may even come with Windows 7 pre-installed. It's an easier transition than to Windows 8, and in either case I'd recommend installing the free Classic Shell (<http://www.classicshell.net>). ☺





# A successful attempt (just) to dual-boot Xubuntu and Microsoft Windows 8.1

By Tim McQueen

I've been – mainly – a Linux user (Xubuntu) for some time now. However, I lecture at U3As and get lots of questions from Microsoft Windows users. So, with a 12-year-old system (upgraded from time to time) and the demise of Microsoft support for Windows XP, I decided to upgrade from that computer to a new one with 64-bit quad-core technology and Windows 8.1.

The Windows 8.1 installation was pretty straightforward, once I figured out that when the system restarts the first time you don't "press any key" to reboot from the DVD. (The Xubuntu installer is more explicit – it specifies removal of the DVD before restarting.)

I found I didn't mind 8.1, even after all the negative comments I'd heard. Like any new environment it takes some getting used to.

I wanted to dual-boot the system so I could continue to use Xubuntu as my main OS. I then discovered I had a Unified Extensible Firmware Interface (UEFI) motherboard. This software interface between the OS and system firmware is designed to replace the venerable BIOS. I required a 64-bit Xubuntu disc. I still thought AMD was a competitor to Intel chips and was quite surprised when advised

by Roger Brown on the Online SIG that I needed to download the AMD64 version.

I was alarmed when the Xubuntu installer didn't recognise the existing Windows 8.1, but had read somewhere on the net that that wasn't an issue. It was. I now had a working 64-bit Xubuntu, but no Windows. (I now know that to dual-boot successfully you need to follow the manual partition path with EFI specific entries.)

I managed to cripple the Xubuntu system by some injudicious file copying, and it was back to square one with installation of Windows 8.1. However, the installer didn't want to play – it told me I couldn't install 8.1 in any of the available partitions but didn't offer any way to resolve the problem. I reinstalled Xubuntu 14.04.

After (correct) restoration of the backup of my Home directory the system was working as required. I then downloaded my preferred software. This is much easier in Xubuntu than in Windows – no having to check at each step that you are downloading the free software, no diversions to odd web-sites, no potentially unwanted programs, and a one-click installation procedure.

The final step was successfully establishing a Virtual Machine and installing Windows 8.1. ☺

## BREAKING NEWS – Our Melb PC Online SIG

Many Thunderbird topics have been discussed, due especially to members moving away from XP and thus Outlook Express. Thunderbird is a good option and it incorporates newsreader capability too. Of course our experts are happily assisting with any set-up problems.

*Computer questions are asked and puzzlements are solved at all hours (24/7) by the Online SIG (Newsgroups) community.*

We have fourteen groups within our Online SIG, each with a different emphasis. You can read some of the conversations by logging into <http://forum.melbpc.org.au/newsforum> with your Melb PC username and password. When you are ready to start a topic, join a conversation or ask for help, you can set up a news-reader utility on your computer, e.g. Thunderbird. We will help you with this. Here's the place to start:

<http://www.melbpc.org.au/faq/newsgroups.htm>





# Image Effects: Kaleidoscope

By Henk Visscher

From Wikipedia:

"A kaleidoscope is a cylinder with mirrors containing loose, colored objects such as beads or pebbles and bits of glass. As the viewer looks into one end, light entering the other creates a colorful pattern, due to the reflection off of the mirrors. Coined in 1817 by Scottish inventor Sir David Brewster,(1) "kaleidoscope" is derived from the Ancient Greek *καλός* (*kalos*), "beautiful, beauty",(2) *εἶδος* (*eidos*), "that which is seen: form, shape"(3) and *σκοπέω* (*skopeō*), "to look to, to examine",(4) hence "observation of beautiful forms."

I had one of those toys as a child. It was cheap and simple: a cardboard tube having inside it three mirrors facing each other, a viewing hole at one end of the tube, and chips of glass of different colours floating loose between a clear piece and a frosted piece of glass at the other end. Rotate the tube and the pieces of coloured glass would create random pretty patterns which were repeated because of the effect of the three mirrors.

So back in the 90s I acquired PaintShop Pro 6, and discovered it had a kaleidoscope effects menu item, I tried it out. I applied the effect to numerous photos as well as clip art and got quite a collection of attractive pictures together.

I urge readers to check their programs, such as Photoshop and Photoshop Elements, for the kaleidoscope effect.

I can still use PSP Version 6. It

is from an earlier time and therefore has less complexity for the beginner in image enhancements. However, lately I became curious about whether a more recent version would still have that effects feature. And, after finding that Corel PaintShop X4 still supports it, I bought it – it was not too expensive, considering I was replacing a 15-year old "dinosaur."

If you have such a recent version of the program, you will find the effect under the Effects menu -> Reflection Effects.

## Selecting image files

The most interesting pictures to use for this effect need to be in colour, with areas of bright colours that contrast well with the rest of the picture. You don't need high resolution images, though I recommend using at least 24-bit images as you don't want the pixels to show up.

One of my first pictures was a close-up of a flower in my garden – one of those with a big blue flower-head over long green leaves. It had a background of a brick wall which made it more interesting. (See Figures 1 and 2.)

I had several other pictures with flowers in them. Because I was born in The Netherlands, which is well known the world over for its tulip cultivation, an image with tulips looked interesting to me.



Figure 1



Figure 2



First I applied the vignette effect of a white fuzzy border (Figure 3a) and gave it a venetian blind look, found under Text effects (Figure 4). Then I applied the kaleidoscope effect and the results are shown in Figures 3b and 4b.

I still consider this one of my favourites. Note how

the white fuzzy border on the original comes out as a hexagon pattern partly covered by the blinds effect. (Ignore the difference in shading between the images as I have had to delete some in-between attempts.) (See Figures 3, 4, 5 and 6)

[...continued]



Figure 3a. White border



Figure 3b. Another kaleidoscope



Figure 4a. With blinds

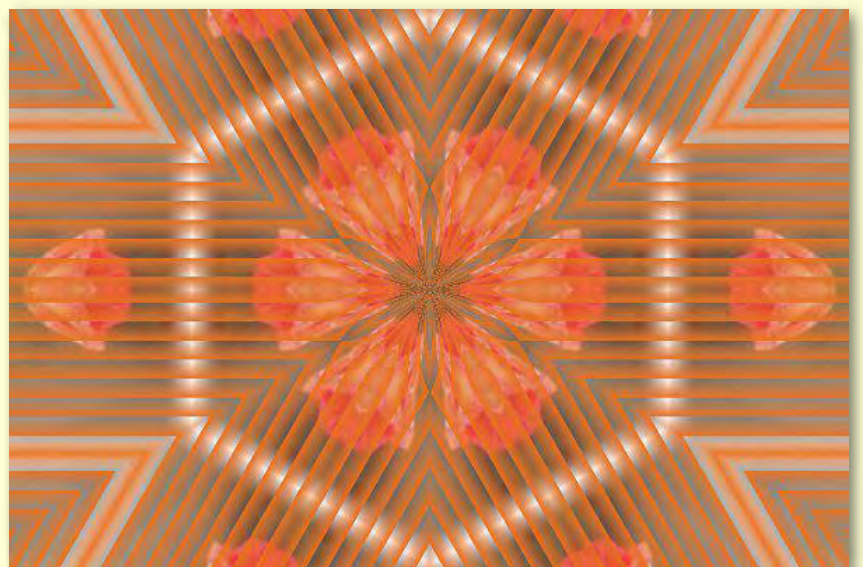


Figure 4b. Note effect of border and blinds



[...continued]

Another thing I discovered was with another picture when, having saved the first image, I ran it through the kaleidoscope effect again and thereby doubled up on the modification – see Figures 7, 9 and 10.

## Creating the kaleidoscope effect

After loading the image file that you want to work on, go to the Effects menu and find Kaleidoscope under Reflection Effects. The Horizontal and Vertical percentage Offsets will locate the spot where the centre of the effect is to be focused, e.g. the head of the flower. (See Figure 8.)

If you try the Rotation Angle you will find that the image will not look right because it will slant unattractively, so leave it at zero.

The Scale Factor is a way to zoom in on your resulting image and is useful if the outer edges have elements you want to keep out.

On the right hand side is the Number of Petals. In other words it enables adjustment of the number of segments if the image were circular. I prefer six, though I have used eight as well.

The Number of Orbits is unhelpful, as you will find when you try it out, so leave that alone as I always do.

Finally, the Radial Suction works on the image's centre and will need adjusting every time you change the offsets and the rotation angle, so leave it till last to clean up the centre of the image.

All the above were in PSP 6 and were what I used to attain the final images shown above. PSP X4 has an extra Edge mode which I leave at Wrap.

The dialog window has a check box to enable preview of your effects as you are working on the image.

Lastly, remember you can undo all your workings with Ctrl+Z in backwards order... until you save the image of course. So be careful not to lose your original image because once saved in the altered state you can't get it back.

My computer holds dozens of images I have thus created and I feel proud to have made them. There is



Figure 7. Original image

too little of the artist in me to match my father who turned his hand successfully at several branches of the arts (and who proudly stayed poor as all true artists usually are).

Have fun. ☺

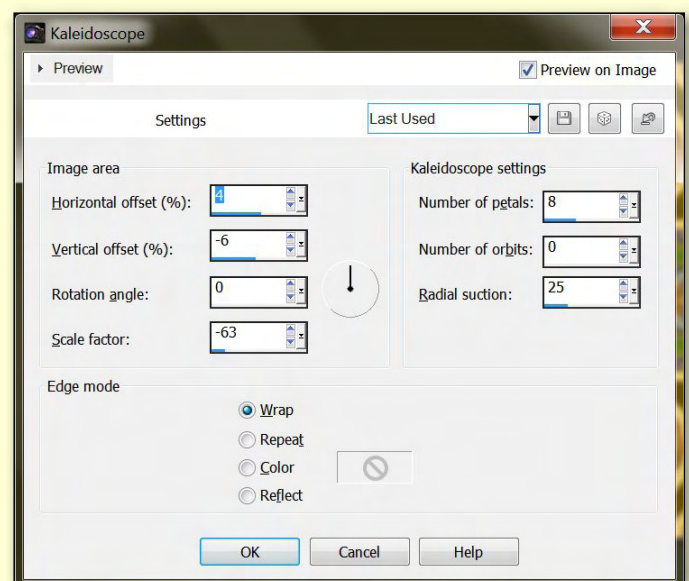


Figure 8. Dialog Window



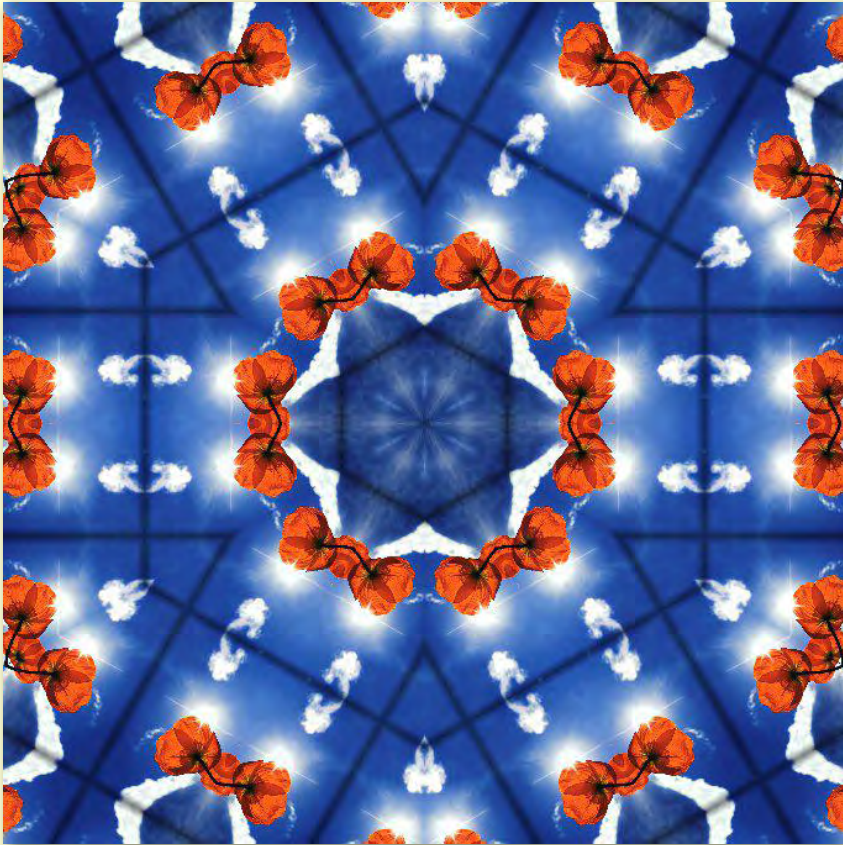


Figure 9. First run

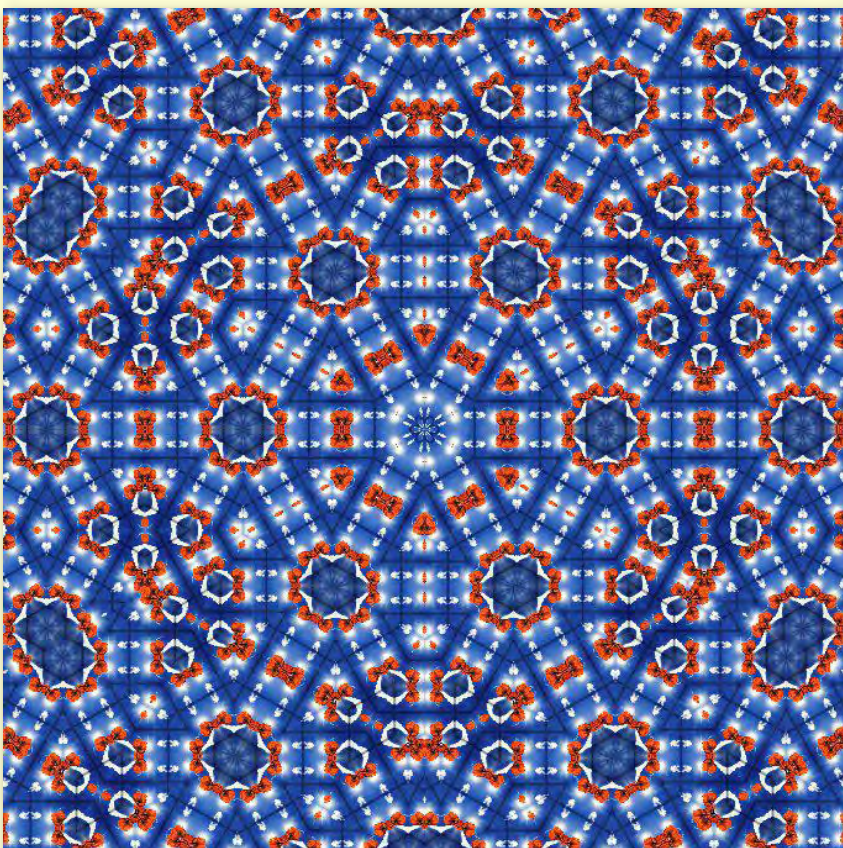


Figure 10. Second run



An early Kaleidoscope  
Courtesy [wikimedia.org](https://commons.wikimedia.org/wiki/File:Kaleidoscope.jpg)



# Preparing a New Windows 7 Installation

By **Geoffrey Keenan**

The following notes are for a DIY Windows 7 new installation, with many principles applying to a DIY Windows 8 installation.

Prior to installing any new operating system (O/S) you should prepare the following:

1. Look for any Service Packs, e.g. for Windows 7  
There is SP1 available from <http://windows.microsoft.com/en-AU/windows7/install-windows-7-service-pack-1>, (make sure you get the right version, i.e. 32-bit or 64-bit). Download to your computer and copy to a USB stick.
2. Make a list of all programs installed on your existing system. I like to use the Winaudit program (free, and there is a portable version) from <http://www.portablefreeware.com>. I recommend installing the new O/S on a new Hard Disk Drive (HDD) or Solid State Drive (SSD). However, if you are going to use your existing hardware, be aware that any motherboard purchased before 2012 could be unsuitable for both Win 7 and 8. Also be aware that any data on a drive you are installing to will be wiped.
3. Unless you are installing on a brand new PC, make a backup of all your existing data.
4. Collect your installation CDs, e.g. for motherboard drivers, Office programs, etc.

5. For your favourite shareware programs, e.g. Irfanview, Foxit PDF Reader etc, download the installation files before you start, and save onto your USB drive.

Run Winaudit, set the output to Text, and then make a list of all installed software. I copy into an Excel file, however you can copy into Word or even Notepad. When your list is complete, remove from it the programs you don't install directly, for example the .NET tools. Print this list.

A nearby shop sold me a genuine copy of Windows 7 64-bit Pro complete with sticker – people trade in old systems and some (not all) retailers turn them over.

When you are ready to install your new O/S, insert the DVD as you turn on the PC. During the boot process you have to navigate to booting from the DVD drive – on my PC when the first splash screen appears I had to first hit the F12 key then from a dropdown list I selected the DVD boot device.

When the Windows 7 DVD boots you accept the first screen (Figure 1). Then you are presented with the option to do an Upgrade or Custom installation (Figure 2). I would not recommend an Upgrade, rather select Custom as that enables you to select which HDD partition (or SSD) to install on.

Next, you will next be asked to give your PC a name. I use Desktop for my main PC, and Laptop or other names for other systems.

If you are the sole or main user of your system and you don't like to click on a User icon every time you boot up, then don't key in a password when requested – you can always add users later. Now:

- Key in your Product Key and continue.
- When the Protecting System screen appears, simply select the Recommended settings.
- Go into the Time Zone settings, making sure the date and time are correct.
- Select the Home Network settings. If you have another PC on your home network then have it turned on at this time, otherwise make a note of the code for networking.
- After the system is loaded, reboot at least once to confirm that all is well. Your screen should look something like that shown in Figure 3.



Figure 1



# NEW WINDOWS 7 INSTALLATION

I have a set order in which I install the next set of important programs;

1. firstly any Service Pack updates,
2. then loading the motherboard drivers; and
3. then load the anti-virus program.

Load the Windows 7 SP1 update from your USB stick, prepared beforehand. If the new PC is on a network then I find it useful to turn on another

network-connected PC just before inserting the motherboard CD. This CD will load the chipset drivers, the LAN driver and the on-board video driver.

At this point your new PC is connected to the world, so you should waste no time in installing your anti-virus software. In the next instalment I will show you a number of settings to make which will both simplify and enhance your computing experience. ☺

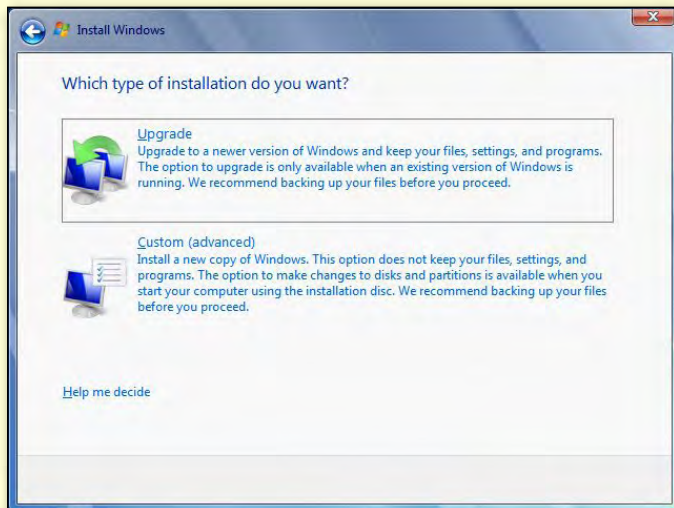


Figure 2

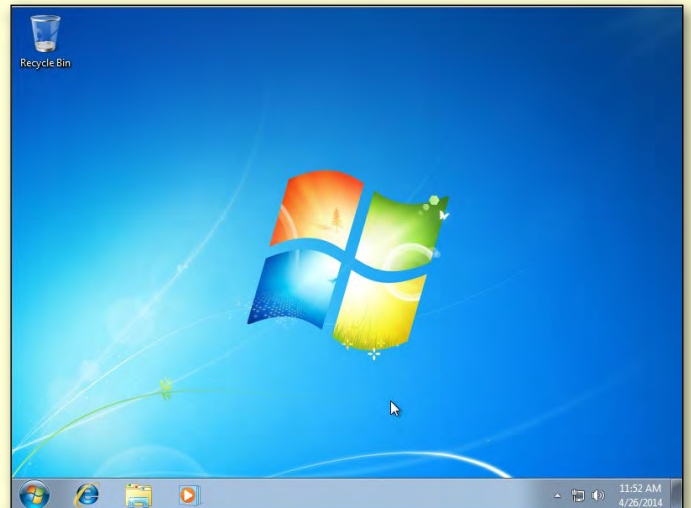


Figure 3

## BREAKING NEWS – Our Melb PC Online SIG

Members are understandably concerned with the serious issues of continuing to run the XP operating system. In the Online Group our technical experts have been discussing the options for upgrading, and assisting with members' questions and problems when doing so.

*Whether you are an expert or a new computer user, we welcome your questions or comments in the Online SIG (Newsgroups).*

Members who are unable to attend the Melb PC monthly meeting have welcomed the first live streaming of the meeting in April. Look out for login details so you can enjoy the meeting, with its usual offerings of excellent speakers, from the comfort of your home. (see <http://tv.mpcug.mobi>)

More news just to hand: the video of each month's meeting will also be available via our Melb PC website. See <https://websec.melbpc.org.au/videos/>

*We are up to date with all the Melb PC news in the Online SIG (Newsgroups).*





# Review: Car Head-Up Display

By George Skarbek

## What is it?

A Head-up display (HUD) is a method of projecting relevant information onto the normal line of sight. It was developed for military aircraft to enable pilots to view critical information without having to look down at their instrument panel. This is done by projecting data onto the windscreen. This technology is now used in cars. Expensive cars.

A HUD is something that I wanted to have, but I was not prepared to buy a new expensive car. So I purchased a HUD device on eBay for about \$60, including postage. It obtains the information from the On Board Diagnostics (ODB II) port which is usually located at the top of the driver's foot well. Most cars manufactured after 2006 will have this port and protocol installed.

My HUD came with a cable, a small reflective foil to put on the windscreen to reflect the display, a

sticky rubber mat to prevent it from slipping, and a terrible manual – the worst that I can remember. The HUD device itself is about 9 x 6 x 1 cm and weighs about 50 grams.

## Installation

After I gave up trying to read the manual, the installation ended up taking under one minute and after I started the car the HUD worked. I spent a few minutes in the carport deciding on the best place to position the reflective screen to obtain the best view. The reflective screen is like a one-way mirror. It reflects the HUD information but you can see through it. It is not intrusive.

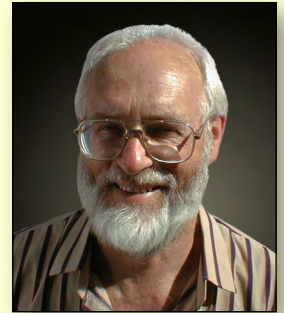
The cable to the unit runs between the dashboard and the car. It does not have to be fastened in any way in my car, a 2006 VW Golf.

The main information displayed is the speed, engine RPM and instantaneous fuel usage, with warnings for high temperature, high RPM and low voltage. Brightness is automatically adjusted.

## How good is it?

Overall I like it a lot.

As you get older your eyes take a fraction longer to adjust from very bright light to dark. When driving with the sun in your eyes and you want to check your speed, the instrument panel is recessed and relatively dark and it takes a couple of seconds for the eyes to adjust to the much darker part of the car, as well as to refocus from infinity to one arm's length.





# REVIEW: CAR HEAD-UP DISPLAY

With the speed being always projected in my line of sight, I can keep my eyes on the road and observe the speed limits.

Although both the speedo and the HUD obtain their information from the same source, the HUD is more accurate. When the car was sitting on 80 km/h, according to a GPS that had locked onto 12 satellites, my speedo read 89 km/h while the HUD showed 84 km/h.

## Gripes

I have only two gripes. One is the terrible and tiny manual, although you probably do not really need it. The English is very bad. For example: "Coefficient of oil consumption is used to adjust the deviation of oil consumption, and is proportional to the current oil consumption."

After reading the manual a couple of times I realised that oil really means petrol or fuel, and not oil.

Another example is that the word treaty is used several times. For example: "The second number represents the sub-treaty of the treaty."

However, I did not delve far into the menu and don't know what treaty they refer to.

My main gripe is that when driving in bright sunlight under a blue sky with sunglasses on, depending on the position of the sun relative to the windscreen, it is very hard or almost impossible to read the speed.

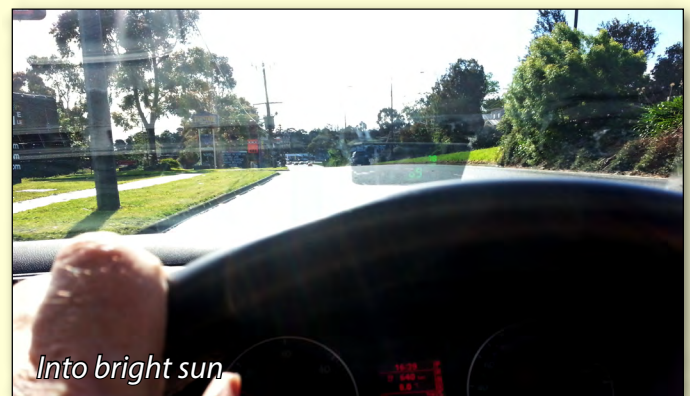
With light cloud, dusk or at night the readability is not a problem.

But with one old pair of cheap clip-on sunglasses it becomes readable for most of the time. The reason is that the polarising was put on the wrong way for normal use.

## Conclusion

If you are interested in such a unit then I can recommend it. It costs less than a tankful of fuel, it is very easy to install and works well in most situations (except at some angles of bright sunlight).

If your car is about seven years old or older then I would suggest that you ring your service department and verify that your car has ODB II before you order it. ☺





**JOHN SWALE reports on questions and answers from the opening session of the February monthly meeting as well from members' written submissions, as answered by BARRY MARTIN.**



## MONITOR ISSUES

A couple of months ago I bought a Samsung monitor. I had not done a defragmentation of the hard drive, so I went into system tools and did a defrag. Now I have lost vision on the monitor. I reloaded the Samsung software and the screen returned. I am wondering if the next time I do a defrag, will I have the same problem?

Heavy fragmentation can sometimes result in cross-linked files. Uncrossing them during a defrag can lose parts of some files. In your case it could have impacted on the graphics card driver rather than the screen. The LCD screen should work without a driver, so your problem is coming from the computer.

You are unlikely to have a problem in the future but you could try a third-party defragger. Try the free program Smart Defrag.

(<http://www.iobit.com/iobitsmartdefrag.html>)

[Ed: or Piriform's Defraggler

<https://www.piriform.com/defraggler> – KS]

## TOM TOM MAPS SAGA

My Tom Tom GPS saga continues. I am still having trouble with downloading the latest maps. I have tried USB ports on the front of the PC, another in a combination USB and card reader and ports on the back of the PC. Are there good and bad USB ports? The ports work on every other USB device I try in them.

Go to the most direct route. The front ports connect to the motherboard by a cable of around 30 cm, whereas the ones on the back are connected directly to the circuitry on the motherboard, so they are the ones to try if you are having any problems.

The other thing to check is the Tom Tom itself and

make sure that the USB connector strips are not damaged. The USB connector is a piece of plastic with copper strips attached. Over time with the insertion and removal they can be broken and not make contact.

Some people have had problems with putting the device into a port different from the one where it was first loaded. The driver that loads the first time the device is attached may connect only to that USB port. So when you attach the USB device to another port the driver may not be found.

There is a setting to show non-connected devices. The Device Manager includes some greyed out Devices for which the driver is there but the device is not. These items can be deleted and when you connect the USB device again the device is seen as brand new and the drivers are reloaded.

## UNINSTALLING KASPERSKY

I installed the 30-day trial copy of Kaspersky security software. I decided I didn't want it as it had too many options, which was not easy for me to use. So I uninstalled Kaspersky through Windows and installed McAfee instead. Now with email the icon shows for a short time then disappears and is replaced with a red cross. I have been through every setting and can't find what is wrong. You can click on a cross and it will go to a web page but you can't see beforehand where it will go unless you hover over it.

You may not have completely uninstalled Kaspersky. Check with Revo uninstaller. This is a common problem with security software where traces are left behind.

[Ed: <http://www.revouninstaller.com> There is a 30-day free trial. – JS]



## WIN XP, STAY OR GO?

I have had friends who want to stay with Windows XP ask me what they need to do. Is the best thing to just keep their antivirus and malware programs up-to-date? If they go for Windows 7, how long will support for Windows 7 continue?

That is about all you can do if you can't convince them of the risks. If they are using a free antivirus program I would strongly suggest they pay a little bit of money for an upgrade to one of the full Internet suites with its own firewall and other protection; they have daily updates. Remember XP uses Internet Explorer 8 and that is not being updated so they should use another browser such

as Firefox or Chrome, which are being patched.

If they go to Windows 7, which was released in 2009, Microsoft will continue to provide security fixes until the January 2020 (or later if they extend it). It's well worth the effort.

## DOWNLOADING PC UPDATE

I can't download *PC Update* but I can see it on the screen. I have tried the different resolution files.

If you can see it on the screen you have actually downloaded it. All you have to do is save it. If you go to the top left File menu there is a drop down and one option is to save. Make sure that you have the latest version of your chosen PDF reader. ☺

## Random Access – Over to You

Please contact me if you have any comments on the answers given, can provide a reply for an unanswered question or if you cannot attend a meeting and would like a question asked and included in this column. Contact me via the office or email [jswale@melbpc.org.au](mailto:jswale@melbpc.org.au).

## BREAKING NEWS – Our Melb PC Online SIG

One of our members encountered a particularly nasty issue in that a (legitimate) security organisation blacklisted his IP address on the grounds that traffic from his address indicated that one or more of his computers was infected with a particularly hard to detect/remove Windows trojan. This resulted in the member being completely unable to send out mail.

Detective work by one of our Online SIG members proved that the infection actually related to a previous holder of the IP address and that our member was not at all infected. This enabled our member to quickly take the necessary steps to restore his ability to send mail.

Our experts give so generously of their time and expertise to assist Online Group members.

It was gratifying also that another member wrote with his heartfelt thanks to the online community for all their help. He called us his "Newsgroup lifeline."

*Our technical experts are happy to assist with your computing puzzlements whatever the operating system you use, and at all times 24/7 in the Online SIG (Newsgroups).*

We have fourteen groups within our Online SIG, each with a different emphasis. You can read some of the conversations by logging into <http://forum.melbpc.org.au/newsforum> with your Melb PC username and password. When you are ready to start a topic, join a conversation or ask for help, you can set up a news-reader utility on your computer, e.g. Thunderbird. We will help you with this. Here's the place to start: <http://www.melbpc.org.au/faq/newsgroups.htm>





## GEORGE SKARBEEK brings us answers to some curly questions.

### CLOUD DATA SAFETY

Storing data in the cloud. Does it apply only to Mac and how safe is it?

I will answer the easy part first. Storing data in the cloud is available to any operating system that has a browser. The DOS-based Windows 3 is okay as is every subsequent version of Windows. Android computers including smart phones, Linux, UNIX and all Macs can store data in the cloud.

There are many cloud storage options. Many are free and some can be set to automatically backup up your data to some server(s) either in Australia or other countries. Generally, the origin of the country is not known and is not relevant for home or small business users. It may be for some government organisations.

Some of the better-known free storage options are Dropbox and Mozy with 2 GB of storage and Microsoft's original SkyDrive offering 7 GB of free data storage. (Microsoft changed its name to OneDrive recently due to a trademark dispute.)

Google has its Google Drive giving 15 GB of storage. Dropbox is more like a hard drive that enables sharing while Microsoft and Google integrate their services more with their products. Products such as Carbonite focus on backup and data recovery.

Device specific cloud solutions include Apple's iCloud, providing 5 GB of storage, automatically backing up personal data, purchased movies, TV shows, apps and books from its iDevices.

Most of the free storage solutions give you more space when you refer friends, and for a

small monthly fee can increase it significantly. Most also enable file sharing with either specific people or the world.

The main benefit of having your data in the cloud, or having your backups in the cloud, is that you can access it from anywhere. Furthermore, if your computer dies or is stolen, your data can be easily recovered.

Restoration of your data is easy and I suggest if you use a cloud service that you practise by moving a file to another folder and then restoring that file from the cloud. This will build up your confidence in using your cloud storage. Do this when you are not stressed rather than for the first time after you have lost your hard drive.

Is it safe? My guess is that it is certainly safer than having it on your computer. This is because hard disks can die without warning. All cloud storage providers have backups to other sites and in some cases to other countries.

Can you be 100 per cent sure that your data cannot be possibly be read by anyone else? No. I am reasonably sure that the American secret service will be able to read it if really required, even if your data is highly encrypted on the cloud server. You'd have to set up an encryption process locally, on your computer, before data is uploaded.

A bigger risk is that one of these large organisations will go bankrupt and will cease providing this service, with the loss of my data.

The way to overcome this event is to use more than one cloud storage provider. I do. I have been using cloud storage for many years and will continue to do so in the future.

However, I also back up to another hard drive and to USB drives that are kept off-site.





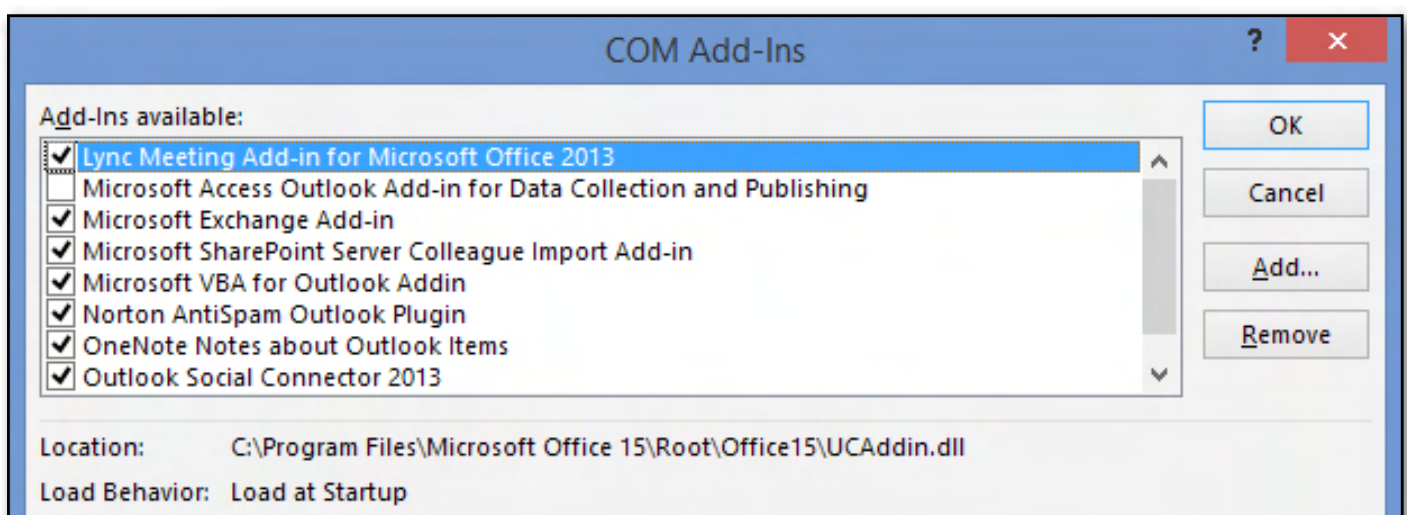
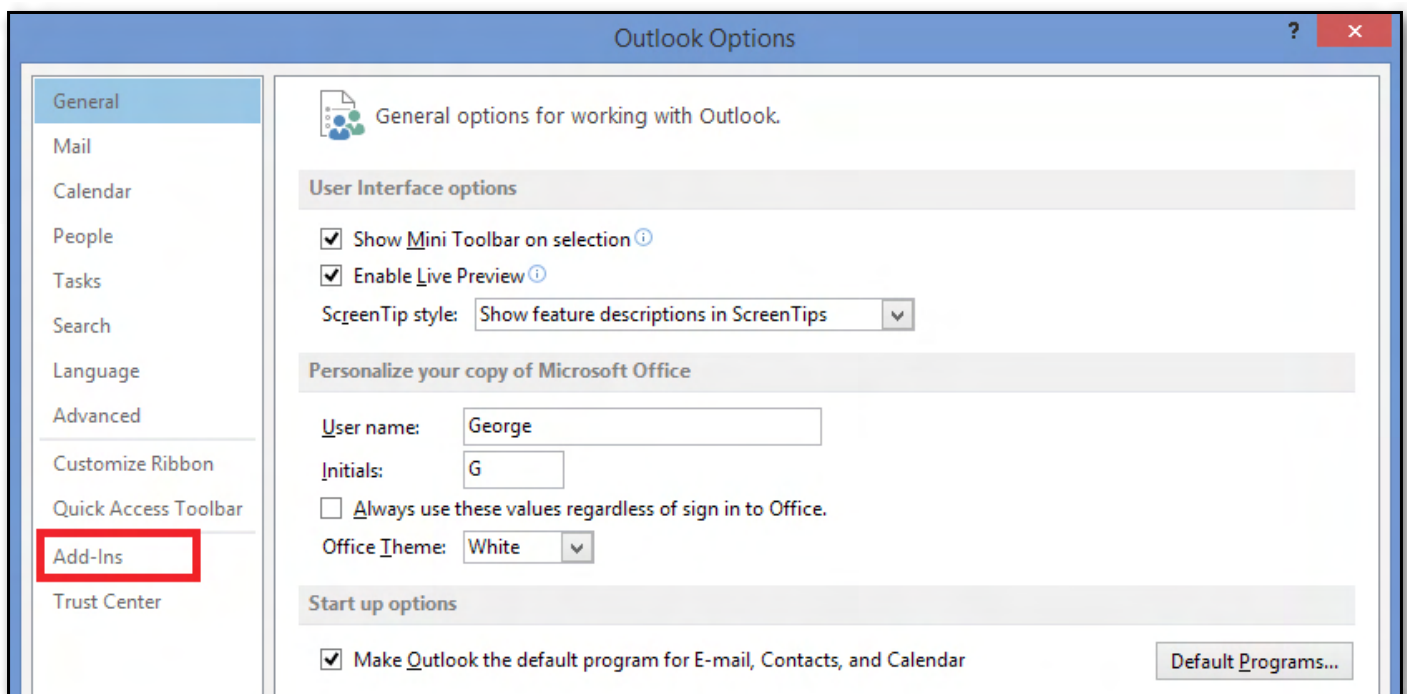
## SLOW OUTLOOK

I have a fast computer with 8 GB of RAM and an SSD. All programs load very quickly and run well. About a month ago Outlook 2007 suddenly took about two minutes to open when it used to open in two seconds. I ran Scanpst but it found no errors. The size of my PST file is about 6.5 GB. It started very quickly in Safe Mode but this has other problems.

This slow opening started to annoy the hell out of me so I purchased and installed Office 2014. The Outlook problem is still there. Is there a fix?

The most likely problem is that there is some add-in that was installed as a result of an upgrade which is waiting for some event to happen before it times out. To remove that culprit: access the Outlook 2013 add-in management window from the Outlook File menu then select Options, Add-ins and click on the Go button at the bottom. This will display all active add-ins. Start by un-ticking any that you don't want or understand. Exit and restart Outlook. If the problem is still there then un-tick another one, restore the first and continue starting Outlook until the problem goes away. ☺

Send your questions to [george@melbpc.org.au](mailto:george@melbpc.org.au)







## The Dirty Word!

By Anon (a Melb PC newsgroup contributor)

Backup! There, I said it!

I wanted to suggest to you all with Outlook.com Melb PC email accounts now, that OneDrive is available from the drop down arrow on the top left hand corner of the [www.outlook.com](http://www.outlook.com) web page.

It gives you 7 GB of free storage and you can upload your important things there for safe keeping, and if something drastic happens to your computer or your local backups then you have another option for resurrecting your data.

I'll quickly describe how I deal with this, and maybe it will give you some ideas.

I use an archiver and compress my important files and folders into a single archive of less than 2 GB. OneDrive only supports uploading of 2 GB files maximum, unless you install their software.

So I have five files of varying sizes and I use my web browser to upload them from my hard drive.

I pick the things I may need quickly, and store them in a small ZIP file – so if I ever need to download and access them quickly then I don't have to wait for a large 2 GB file to download.

The things I backup are these, in no particular order:

- Images
- Documents
- Medical information
- Books

- Information I have collected on hobbies
- Programming scripts
- Personal photos and videos
- Software registration keys
- Scanned bills and receipts
- A set of free software utilities that I keep on the PATH that don't need to be installed
- A password safe with all my passwords and sites and other details
- Email – I export all my email messages and ZIP them up

The ZIP files are all encrypted and all have a password that I am not likely to forget.

And that's it. It will take a long while to upload a lot of data, but it gives you some security and peace of mind that all the usual things that you do on the computer can be restored simply by reinstalling your operating system. And it's free!

## Privacy in the Cloud

By Katharine Shade

The most secure way to keep your cloud data private is to encrypt the data at your end before uploading it. There are plenty of products both free and paid which make this possible. Note that encrypting/decrypting files before upload/download will slow the whole process down.

There are three main levels:

1. The simplest, but least automated, is to manually encrypt your files before uploading either zipping files with the encryption option turned on or using a stand-alone encryption program (e.g. [TrueCrypt](#)).
2. Use a program which automates the process of encrypting the files locally and integrates into the major cloud storage provider services, e.g. [Boxcryptor](#), [SecretSync](#).
3. There are a number of emerging cloud storage companies which incorporate encryption that takes place locally on your computer, which means they can't access your data no matter who asks them for it, e.g. [Tresorit](#), [Mega](#), [TeamDrive](#).



# LOCAL/GENERAL AND SPECIAL INTEREST GROUPS

## Introduction

Groups of members with specific interests meet regularly to discuss and indulge their diverse interests. There are also local groups which cover more general topics. Often you will see presentations by visiting experts on a wide range of subjects.

This is where Melb PC membership really pays off. Enhance your computer knowledge and widen your circle of friends to include other members who have similar interests and, very often, similar

problems to solve. All members are most welcome.

This is part of your Melb PC membership, so feel free to contact any of the conveners listed here. Ask them about future meetings; ask them about the format of their meetings and anything else you need in order to get started.

Many of the groups have their own web page – follow the links from here: <http://groups.melbpc.org.au>

## IS THERE A GROUP NEAR YOU?

### Any suburb

Online SIG (was Anywhere,  
Any-time – Newsgroups)  
iHelp

### Avondale Heights

Essendon

### Ballarat

Ballarat

### Balwyn

Video Inner East

### Brighton

Bayside

### Gisborne

Macedon Ranges

### Hoppers Crossing

Wyndham

Wyndham Multimedia

### Ivanhoe

North East Genealogy

North East Daytime

North East Photography/

Digital Imaging

North East Android

North East

### Montrose

Yarra Ranges

Yarra Ranges Workshop

### Mount Waverley

East Workshop

Multimedia

Hardware

Digital Photography

Raspberry Pi

### Mornington

Mornington Peninsula

Mornington Peninsula Digital  
Imaging

Mornington Peninsula Family  
History

### Narre Warren

Casey

Casey Workshop

### Sunbury

Sunbury

Sunbury New Users,  
Maintenance, Linux

### Watsonia

Northern Suburbs Linux

### Vermont South

Beast (Beginners East)

Geneast (Genealogy East)

East

East Workshop

## Moorabbin (Melb PC Headquarters)

Access (Database) and Excel  
Communications

E-Book

Everything Apple

Everything iPad

Graphics/Animation

Lan-slide Gaming

Linux & Open Source

Linux & Open Source  
Workshop

MACE

Making Money on the  
Internet

Microcontroller

Microcontroller Workshop

Music

Programming

Sony Video Production

WASINT (Web & Software  
Investment Tools)

Website Design

Windows 7&8

## WHAT'S ON THIS WEEK?

Check the calendar on [Page 48](#).



## Access and Excel

by Craig Evans

### Environment: Windows 7 with Access 2010 and Excel 2010

During our meeting we discussed:

1. Excel: Code to automatically copy the completed sheet to the end of the spreadsheets and convert the data to values.  
The manual process is to right-click the sheet tab, select Move or Copy, select (move to end), tick Create a copy, click OK.
2. Excel: The data validation list shows a maximum of eight items. This cannot be changed and neither can the font size.
3. Excel: Zoom on open (Chip Pearson).  
The code on the following site changes the

zoom of the sheet to as small as possible to display all the data in the sheet.

<http://www.cpearson.com/excel/zoom.htm>

4. Access: A browser is embedded in a database to show Google maps. The web page below may have the code to show the shortest driving distance between multiple points.  
<http://stackoverflow.com/questions/4158492/code-to-get-gps-coordinates-from-address-vb6-vba-vbscript>

Our meetings are usually Q&A. Occasionally we have a demonstration of database or spreadsheet magic.

A detailed explanation of the topics above is available on our web page at: <http://groups.melbpc.org.au/~access/sigtxt/SIGJUN13.htm>

## Beast (Beginners East)

by Jean de Neef

March 2014

### Recent Acquisitions

An inkjet printer, a laser printer and a \$50 connector to hook an iPad and a TV screen were recently acquired.

Note that the cost of inkjet printer cartridges can be considerably more than the cost of a printer. Ways of overcoming this are: refill your own cartridges (in the garage!), buy them on eBay from China, or buy generic cartridges at a swap meet.

### Questions & Answers

Dave Botherway suggested that when you manage to solve a problem yourself, you should note down what you did – both for yourself should the problem arise again, and possibly to provide an answer to a question submitted at our meeting.

### When you use Google Earth, are the pins you used for locations saved?

Google Earth is a complete program that offers more globe-viewing features than Google Maps, but for most purposes you can just use the latter.

If you are logged on and click on My Places in Google Maps, you get a list of earlier searches. For aerial views, go to Satellite in the top right corner of the screen. Type in the address you want and zoom in. For street view, you can move the Orange Man to where you want him on the map. Faces and car

number plates are blurred for privacy.

### How do you put bookmarks on Firefox's Bookmarks toolbar (called Favourites in Internet Explorer)?

Press the Alt key, and then click on the View menu at the top of the screen. Click on Toolbars, then on Bookmarks Toolbar. To get bookmarks onto the toolbar, open the website you want and drag its icon down onto the toolbar. If the name is taking up too much room, right click the name, select Properties and type a shorter name in the Name box. To remove a bookmark, right click on it and click Delete.

If there are too many bookmarks to fit, click the double arrow (show more bookmarks) on the right of the toolbar to see a dropdown list. To create folders to sort and store bookmarks, right click the Bookmarks Toolbar and select New Folder.

### Presentation: HDD, SSD and SDHC – what are they?

Choi won an 8 GB USB drive for submitting this question.

The HDD (Hard Disc Drive) followed on from the 1.4 MB floppy disc drive and comes in two physical sizes: 3.5 inch and 2.5 inch (for laptops). Their internal components are rotating platters, a moveable arm and read/write heads. The heads don't actually



touch the platters (which rotate at 5400 or 7200 rpm), but “fly” above the rotating surface.

There are two delays: a seek delay of average 50 milliseconds when the arm moves to the track wanted and a rotational delay of average 5 milliseconds while the platter spins to put the needed data under the read/write head.

HDDs for personal computers are now up to around 4 TB. (1 Gigabyte=1000 MB. 1 Terabyte = 1000 GB.) 3.5 inch HDDs external to the PC need their own power supply, while external 2.5 inch HDDs can usually operate from a USB connection.

Currently the typical cost of a 1 TB 3.5” HDD is \$67, and a 1 TB 2.5” HDD is \$80. Because these drives are mechanical, they produce noise and heat and are subject to bearing wear – and reading/writing head crashes!

SSDs (Solid State Drives) are small, identical in both shape and connections to a 2.5” HDD, and swappable. They are non-rotating, so there is no seek or rotational delay. They are 20 to 50 times faster than a 2.5” HDD. They use far less power and there is no heat or noise. Their current size is up to around 750 GB (as compared to 4000 GB for a HDD).

The price has dropped sharply over the last two years. Today a 240 GB SSD costs \$214, which is about \$1 per GB, while a HDD costs about seven cents per GB.

“Defragmenting” an HDD reduces the fragmentation of files on the disc, but is not needed for an SSD (and should not be used, as SSDs do “wear out”).

SDHC (Secure Digital High Capacity) cards follow on from the USB thumb drive and are small in size for use in phones and digital cameras, both video and still. There are various speed classes (e.g. C4 and C10) but speed may not be important. They are ideal for tablet expansion, for example in a RaspberryPi computer. Sizes are from 250 MB to 128 GB, with a 32 GB card costing about \$25.

A micro SDHC card is very tiny (finger-nail size), and with an adapter, can also fit into a normal SDHC slot.


## Raspberry Pi

After the break, Dave showed us his Raspberry Pi, a credit-card-sized single-board computer developed in the UK by the Raspberry Pi Foundation; its purpose being to promote the teaching of basic computer science in schools. It is a Linux-based

system providing Internet access, games and video. Dave showed a small wireless combo keyboard/mouse that is a valuable extension.

## Melb PC's New Email System

Incoming mail goes to the Outlook.com server, and we can either access it at Outlook.com through our web browser or use a POP email client (such as Office – Outlook, Web Live Mail, Thunderbird or Eudora). Outlook.com also provides a very useful calendar: click on the down arrow at the top left of the Outlook.com screen to find it.

To set up Outlook.com for POP (Post Office Protocol) client access, go to the cog icon  at the top right of the Outlook screen and click on Mail Settings/Connect Devices and Apps with POP, and make sure POP is enabled. Create a rule to move all messages that contain a @ to your Inbox (Mail Settings/Options). This ensures any legitimate email caught up in the Junk Mail folder can be accessed by your email client and downloaded.

For POP client, perhaps leave the outgoing SMTP (Simple Mail Transfer Protocol) as is (i.e. your existing ISP). If changing to Outlook.com, there are instructions on Melb PC's website for how to change the settings.

There is an option to add a second email address and mobile phone number, which provide password recovery and extra security and functionality.

POP versus iMAP (Internet Message Access Protocol): With POP, email is normally downloaded to the PC and then deleted from the host server to keep within Mailbox size limits (e.g. Melb PC's old 10 MB mailbox limit). Messages are then only available on that computer. History, including folders, has to be maintained within the PC client and it can become difficult to synchronise data across PCs, tablets and phones.

*[Ed: if you have a large mailbox capacity, just tick “leave messages on server” in your email client, and automatically BCC yourself when you send email from anywhere other than your main computer, so that you have a local copy. – KS]*

iMAP is an alternative method, where after downloading to a PC client, the messages are retained on the host server (e.g. if they provide 5 GB of space) and can be accessed from other PCs. Very useful when having both a desktop and smartphone frequently accessing the same email account.



## Casey

by Con Lilly

### February 2014

Jan Whitaker as Convenor welcomed three visitors and went on to introduce a mini-quiz for all present to gauge how well members were able to understand a lot of the expressions and acronyms that crop up when dealing with computer topics. More than 50 per cent were deemed to be sufficiently literate that intense tuition would not be necessary for future meetings!

The main Speaker was Heather Arnold, a Local History Librarian from Casey-Cardinia Library who gave a spirited introduction to online resources for those interested in genealogy and family history. Heather showed her extensive interest in the subject and was assisted by Jan Whitaker who was able to demonstrate the many sites in Australia and overseas on the projection screen as they were mentioned. The sections covered included

government, cemeteries, military and war records, as well as specialised resources only available for use in the library itself.

After the usual tea/coffee break and chat, the Q&A segment and tips & tricks covered interesting items from "Mr Gadget-man" Phillip Rocke. He also expressed his interest in forming a group of members who would contact each other when they had items of audio/computer hardware that they no longer used, but were willing to sell or exchange/swap/donate to others before offering them to the general market.

Questions were asked about the Melb PC email changes and difficulties, and although some answers were given by those at the meeting, it was agreed that members with continuing email problems should make a point of attending the next Friday Workshop (with their laptop or computer).

## Eastsig

by Clive Chatfield

### February 2014

#### Q&A with George Skarbek

**Under Firefox Options> Advanced> General> Accessibility, why is "Warn me when websites try to redirect or reload the page" left unticked by default?**

Many sites will send you on to another site as part of their normal operation. Try ticking the box for a period; the result could well be found more nuisance than value.

#### Stewart Bedford

Before beginning a presentation on Google, Stewart Bedford showed a short video taken by his wife's dash-mounted camera of a collision at an intersection. She had stopped at lights, which turned green, and, as the cars moved off, a car on her left rammed the car in front. The camera does not have GPS but does show date and time and showed the number plate quite readably.

#### Raspberry Pi

John Hall demonstrated his use of a Raspberry Pi computer as a media centre. The Raspberry Pi is a fully operational computer based on an ARN chip

(Samsung 246, K4P4G324EB-AGC1, 12mm square by approx. 1½ mm deep) on a 90mm x 55mm motherboard. Overall height is 15mm.

No case is provided but several are available. The Pi has 512 MB RAM (V2; V1 had 256), two USB2 ports, HDMI out, composite video out, stereo audio out, RJ45 in, connection for a proprietary camera, a mini USB socket for power in and a socket for an SD card as a hard drive.

It requires a 5 volt DC supply, at least 1 amp, e.g. a phone charger. The SD card, which should be at least 8 GB, protrudes 15mm and is easily changed.

Like any other computer, Pi requires a keyboard, mouse and a monitor. A useful addition is a 10-port powered hub which has a 5 volt 3 amp supply. When plugged in as an extension to Pi's regular USB ports it also powers the Pi.

The Pi costs \$35; a case can cost as little as \$10 or Pi and case together with postage and handling, about \$50; the powered hub referred to above, about another \$35.

No software is provided but a free download of Raspbian, which is a version of Linux Debian with a Raspberry Pi GUI, is readily available with instructions on how to load it onto the SD card using a PC.



With the SD card installed, the Pi becomes a Linux computer with power equivalent to a Pentium II.

The Raspberry Pi SIG meets on the fourth Friday at Wadham House, Mount Waverley, and is a hands-on session around a central table, access to which is limited to about twelve without overcrowding; membership is restricted to owners of a Raspberry Pi.

Because of its size, the Pi is exceptionally versatile. A few of the uses are: web server; multimedia server; home lighting controller; with a camera, a home security unit; in-car camera; weather station; radio controlled vehicle e.g. a remote controlled robot that avoids obstacles; GPS tracker; super computer using two or more Pi in parallel; network analyser; solar power system monitor; used in weather balloons at high altitudes; monitoring traffic.

By adding a large external drive, e.g. 2 TB, it can be used as a NAS box, costing about \$150 compared with upwards of \$350 for the standard hardware.

Assisted by three videos, one downloaded and two of his own, John showed how Pi with the media centre/player software xbmc is used as a media server. A short video played through the Pi media centre was definitely superior to the same video played with an Eee PC.

## March 2014

### Q & A with George Skarbek

**With Windows 8 running satisfactorily with the Classic Shell desktop interface, is there any advantage in upgrading to Windows 8.1?**

Windows 8.1 has some improvements and minor tweaks and the large majority of such upgrades will work seamlessly. It is a free upgrade and Classic Shell will work as before.

**Following the upgrade of a laptop from a 40 GB HD with C and D partitions to a 320 GB HD, the computer serviceman who transferred the operating system and software for the owner stated that there appeared to be a fault in the partitioning of the 40 GB drive. The new drive operated satisfactorily at first; however, following a later transfer, by the owner, of data from the 40 GB drive to the 320, the computer no longer will boot.**

Download Hiren's BootCD ISO file

(<http://www.hiren.info/pages/bootcd>), burn an image from it and use it to boot the computer. Hiren's BootCD contains 150 utilities covering a wide range of diagnostic tools and other programs, including partitioning and boot sector repair utilities.

### Presentations

Dave Botherway recapped part of a previous talk on the new email system and followed with "How can we best use Outlook.com?", during which he covered various aspects of the Outlook.com configuration using the "cogwheel" icon on the header bar.

George Skarbek showed how to make Web-based vectored fonts using PaintFont ([www.paintfont.com](http://www.paintfont.com)) to create a completely new font based on his own handwriting. While George's handwriting (like that of this reporter) leaves much to be desired, he certainly produced a unique font complete with bold, italic and underline.

Stewart Bedford demonstrated printing via Google Cloud by sending a file with a print request via the cloud to his home printer and then logging on to his home network to show a camera view of the printer printing the file a few minutes later.

### Legacy8

The main presentation was the family history software program, Legacy8. We discussed the new features available in regard to sources, charts, mapping and reports. Some advantages that Legacy8 has over other programs include things like reasonable pricing and free updates. The program itself costs around \$30 and printed manuals can be purchased separately.

Navigation and data entry is easy and most things can be done from the one screen. Source templates are included and assist you in documenting your sources professionally, regardless of your experience.

Reports can be previewed on screen and exported to either RTF or PDF. You can compare two different family files side by side, which enables you to copy information from one to the other very efficiently. The program can create web pages, which you can upload to your blog or other web space. Using Bing maps, you are able to track important events in your ancestors' lives. <http://www.legacyfamilytree.com/>



## Everything Apple

by Susan Jensen

**April 2014**

A template is a standard document containing layout and styles used to configure documents. Apple gives a few templates within its iWork suite of apps.

Using Pages as the example we found the business card templates unattractive and with fonts much too small to be readable.

We changed a graphic in a flyer template and added personal information where placeholder text had been. There were limitations.

We saved a colour so it could be used in similar documents so they would maintain that consistent

“look.” Another example was a simple invoice.

A template does not alter; when you open one you save your work but the original remains intact.

We chatted about Office for iPad and how expensive that would be in comparison to the moderate price of the offerings from Apple.

We touched on printing of business cards, using plain paper or custom made perforated paper. You need to be sure that the paper used is thick enough for a card but thin enough to go through the printer.

Avery DesignPro (available for Mac and PC) is useful for designing cards and labels which match their paper stock (<http://www.avery.com>).

## Northern Suburbs Linux

by Paul Addis

**February 2014**

Nick Vespo was not able to be with us, due to pressure of business. As a result, we missed a Linux News segment.

David Hatton announced that the group repository is being retired. The need for a local repository has reduced in recent times; the availability of fast connections and larger download allowances has meant that there is much less call for transfers from the local repository than there used to be. Our “download elf” will be much relieved to be free to use his time in other ways.

David Hatton and Trevor Jacobs are planning to run a workshop for Windows XP users to help them decide which direction to take when XP is no longer supported by Microsoft. The main concern for those users should be the security exposure increasing over time because of the lack of updates from Microsoft.

The workshop will be run in conjunction with the Watsonia Library, as a gesture in return for their support and generosity to the group.

We are seeking volunteers to help answer questions and guide the faltering footsteps of Windows XP users exposed to a brave new world.

A video was shown of a security expert giving a presentation on TED.com. He is of the opinion that the bad guys are getting smarter and more

organised in their continuing efforts to break into networks and computers, usually for profit.

There is even a web site offering kits for the creation of viruses and other malicious software. The offering includes help facilities and even technical support.

### David Hatton's “Bits and Bytes”

The first item related to setting up Thunderbird to receive RSS feeds. David walked through the addition of an account to bring the feeds to a user's Inbox. It appeared to be relatively straightforward.

The next item also involved the Thunderbird email client. Using information from the Auscert web site, David has set up security alerts for Thunderbird running on Linux.

The final item was a short information session on the use of “sudoers” to control access permissions. As a demonstration, an attempt was made to run Mint backup; A Mint 16 system was being used. After asking for a password, the command failed, but produced no error message. (A Mint bug, perhaps?)

Examining the permissions showed the users and groups that had the ability to run the command. It was necessary to change the user to a group having the proper permissions, achieved via the “sudoers” facility and its configuration. And... success, the command ran.



## Yarra Ranges

by John Sapsford

### February 2014

We had a discussion about Apple's iPad. One member has bought two for family members and he is in the process of learning all the features and capabilities of an iPad.

The group's laptop keyboard needed to be replaced due to an unfortunate accident. A replacement was bought from the Internet and was installed during the Workshop session. A YouTube video helped guide us through the installation.

Shane gave us a demonstration of Knoppix Version 7.2 ([www.knoppix.net](http://www.knoppix.net)), one of a number of Open Source Linux distributions. It is a large download as an .ISO image which is then written to a bootable DVD using Neo or Ultra or similar software. This can be useful for recovering files from a hard drive when you experience start up problems and your computer won't boot from the hard disk.

We then had a tour of Knoppix, looking into the file structure, and Libre Office, which is capable of running multiple desktops. Rotating the mouse wheel displays each desktop.

John then showed a short video captured from a television news program about 3D printing. It was noted that Officeworks has a simple Cube 3D printer for \$1,499 and replacement plastic cartridges are \$60.

### March 2014

One member reported he had upgraded his computer with a Samsung 250 GB Solid State Drive. It came with a disc with software which simplified transferring all files from the previous drive to the new drive, and an SSD drive

maintenance utility called Samsung Magician.

One member reported his purchase of another 320 GB hard drive at the new Centre Com shop in Nunawading.

A discussion followed about a BIOS virus and BIOS upgrades.

Bryan gave members a reminder that if you continue to use Windows XP after support ends, your computer will still work, but it might become more vulnerable to security risks and viruses. Also, as more software and hardware manufacturers continue to optimise for more recent versions of Windows, you can expect to encounter greater numbers of apps and devices that do not work with Windows XP.

Microsoft will also stop providing [Microsoft Security Essentials](#) for download. (If you already have Microsoft Security Essentials installed, you will continue to receive antimalware signature updates for a limited time, but this does not mean that your PC will be secure because Microsoft will no longer be providing security updates to help protect your PC.)

A discussion about printers and replacement cartridges followed.

After morning tea we had a discussion about the Apple iPad. A number of members had bought iPads and were happy with them.

One member was impressed with a visit to the Apple shop in Doncaster.

Some of the features discussed included how to group Apple Apps, how to give a new folder a name, the mapping system, and keeping the software up-to-date.

## BREAKING NEWS – Our Melb PC Online SIG

We had an amusing discussion about the possible interaction with our body's sleep cycles and thus health, when changing in and out of daylight saving times.

*At any time of the day or night there is always something interesting to chat about in the Online SIG (Newsgroups).*





# GROUP DETAILS

Blue headings are special interest groups at Melb PC Headquarters, Moorabbin.

Green headings are local/general groups.

Red indicates a recent change.

Details of the interest groups are also available at: <http://groups.melbpc.org.au>

## ACCESS (DATABASE) AND EXCEL

[access@melbpc.org.au](mailto:access@melbpc.org.au)

<http://groups.melbpc.org.au/~access/>

**Convener** Craig Evans [Craig\\_Evans@racv.com.au](mailto:Craig_Evans@racv.com.au)

**Date** Second Monday  
(except January)

**Time** 6.30pm-8.30pm

**Venue** Melb PC Headquarters  
Level 1, 479 Warrigal Rd, Moorabbin

## ADOBE VIDEO

Currently in recess.

## BALLARAT

[ballarat@melbpc.org.au](mailto:ballarat@melbpc.org.au)

**Convener** Alan Pittard 5339 4235

**Date** First Thursday

**Time** 7.30pm-9.45pm

**Venue** Midlands Golf Club Heinz Lane Ballarat

## BAYSIDE

[bayside@melbpc.org.au](mailto:bayside@melbpc.org.au)

<http://groups.melbpc.org.au/~bayside/>

**Convener** John Morris 9583 4095  
Graham Ackland 9589 6229

**Date** Third Thursday

**Time** 10am-12 noon main meeting  
12 noon-1pm beginners' subgroup

**Venue** St Stephens Church Hall, Cnr Cochrane  
Street and North Road Brighton.

## CASEY

[casey@melbpc.org.au](mailto:casey@melbpc.org.au)

<http://groups.melbpc.org.au/~casey/>

**Convener** Jan Whitaker 9705 9009  
Jan Weiner 9796 2807

**Date** Second Friday  
(except January)

**Time** 12.30pm-3pm

**Venue** Narre Warren Library (Fountain Gate)  
Overland Drive Narre Warren 3805  
Melway 110 D4

## CASEY WORKSHOP

**Convener** Jan Weiner 9796 2807  
Jan Whitaker 9705 9009

**Date** Fourth Friday

**Time** 12.30-3pm

**Venue** Narre Warren Library (Fountain Gate)  
Overland Drive Narre Warren 3805  
Melway 110 D4

## COMMUNICATIONS

[comms@melbpc.org.au](mailto:comms@melbpc.org.au)

**Convener** Philip Lew 0418 567 019

**Date** Second Wednesday  
(except January)

**Time** 7-9.30pm

**Venue** Melb PC Headquarters  
Level 1, 479 Warrigal Rd, Moorabbin

## DIGITAL PHOTOGRAPHY

**Convener** Ian Bock 9807 3701  
[bockey@melbpc.org.au](mailto:bockey@melbpc.org.au)

**Date** Third Friday  
(except December)

**Time** 10am-12 noon

**Venue** Wadham House 52 Wadham Parade  
Mount Waverley Melway 61 E12

## E-BOOK

[ebook@melbpc.org.au](mailto:ebook@melbpc.org.au)

**Convener** Dennis Fieldhouse 9557 6847  
John Swale 0417 530 766

**Date** Second Thursday (except January)

**Time** 7pm

**Venue** Melb PC Headquarters  
Level 1, 479 Warrigal Rd, Moorabbin

## BEAST (BEGINNERS EAST)

[beast@melbpc.org.au](mailto:beast@melbpc.org.au)

**Convener** Dave Botherway [daveb@melbpc.org.au](mailto:daveb@melbpc.org.au)

**Date** Third Sunday (February to November)  
Second Sunday in December (no January  
meeting).

**Time** 10am-12.30pm

**Venue** Vermont South Community Centre  
Karoobran Drive, Vermont South. Melway 62 G7



## GENEAST (GENEALOGY EAST)

[geneast@melbpc.org.au](mailto:geneast@melbpc.org.au)

**Convener** Dave Botherway [daveb@melbpc.org.au](mailto:daveb@melbpc.org.au)  
**Date** Third Sunday (February to November)  
 Second Sunday in December (no January meeting).  
**Time** 1pm-3.30pm  
**Venue** Vermont South Community Centre  
 Karobran Drive, Vermont South. Melway 62 G7

## EAST

[east@melbpc.org.au](mailto:east@melbpc.org.au)

<http://groups.melbpc.org.au/~east>

**Convener** Paul Woolard 9877 1059  
 Ian Dewhurst 0438 480 500  
**Date** Second Wednesday (except January)  
**Time** 7.30pm-10pm  
**Venue** Vermont South Community Centre  
 Karobran Drive, Vermont South. Melway 62 G7

## EAST WORKSHOP

[eastwsh@melbpc.org.au](mailto:eastwsh@melbpc.org.au)

<http://groups.melbpc.org.au/~eastwsh>

**Convener** Ken Gubbins 9842 8875  
 Jeff Webster 9078 0879  
**Date** Second Sunday  
**Time** 10am-2pm  
**Venue** Wadham House 52 Wadham Parade  
 Mt Waverley rear of Library. Melway 61 E12

## ESSENDON

[essendon@melbpc.org.au](mailto:essendon@melbpc.org.au)

<http://groups.melbpc.org.au/~essendon>

**Convener** John Guegan 9317 7114  
**Date** First, second, and third Friday  
**Venue** Nancye Kirchner Neighbourhood Centre,  
 Doyle Street Avondale Heights  
 Melway 27 D6  
**Date** First Friday: Main meeting.  
 Second Friday: Open Forum.  
 Fourth Friday: Varies  
 (check website for details).  
**Time** 9:30am-12 noon

## Multimedia/General

**Date** Fourth Wednesday  
 (except January)  
**Time** 7pm-9pm

## EVERYTHING APPLE

[everything-apple@ausom.net.au](mailto:everything-apple@ausom.net.au)

**Convener** Susan Jensen 9885 7060  
 Damian Vuleta 9509 9992  
**Date** Second Tuesday (except January)  
**Time** 2pm-4pm  
**Venue** Melb PC Headquarters  
 Level 1, 479 Warrigal Rd, Moorabbin

## EVERYTHING IPAD

[everything-ipad@ausom.net.au](mailto:everything-ipad@ausom.net.au)

**Convener** Dick Johnson 9857 7362  
**Date** Third Wednesday (except January)  
**Time** 2pm-4pm  
**Venue** Melb PC Headquarters  
 Level 1, 479 Warrigal Rd, Moorabbin

## GRAPHICS/ANIMATION

[graphics@melbpc.org.au](mailto:graphics@melbpc.org.au)

<http://groups.melbpc.org.au/~graphics>

**Convener** Yahya Abdal-Aziz  
 Roger Wragg [rdwragg@fastmail.fm](mailto:rdwragg@fastmail.fm)  
**Date** Third Monday  
**Time** 7.30pm-9.30pm  
**Venue** Melb PC Headquarters  
 Level 1, 479 Warrigal Rd, Moorabbin

## HARDWARE

**Convener** Kelvin Cording 9438 1047  
[kcording@bigpond.net.au](mailto:kcording@bigpond.net.au)  
 Bill Dair 9802 4242  
[wedair@melbpc.org.au](mailto:wedair@melbpc.org.au)

**Date** Second Friday (except January)  
**Time** 10am-12 noon  
**Venue** Wadham House 52 Wadham Parade  
 Mount Waverley Melway 61 E12

## HARDWARE WORKSHOP

**Convener** Barry Martin [barrymar@melbpc.org.au](mailto:barrymar@melbpc.org.au)  
**Date** Fourth Saturday  
**Time** 10am-12 noon  
**Venue** Melb PC Headquarters  
 Level 1, 479 Warrigal Rd, Moorabbin

## iHELP

[ihelp@melbpc.org.au](mailto:ihelp@melbpc.org.au)

<http://groups.melbpc.org.au/~ihelp>

**Convener** Rotational  
 (check with office for current details)  
**Date** Approximately 6 monthly  
**Time** 7-9pm  
**Venue** Melb PC Headquarters  
 Level 1, 479 Warrigal Rd, Moorabbin



## LAN-SLIDE GAMING

<http://www.lanslide.com.au>

<http://www.facebook.com/groups/lanslide>

**Convener** Brendon Taylor, Craig Mattson  
**Date** TBA  
**Time** 26-hour gaming event  
10am Saturday until 12 noon Sunday  
**Venue** Melb PC Headquarters  
Level 1, 479 Warrigal Rd, Moorabbin

## LINUX AND OPEN SOURCE WORKSHOP

[linux@melbpc.org.au](mailto:linux@melbpc.org.au)

<http://member.melbpc.org.au/~linux>

**Convener** James Cox 9885 5503  
**Date** Second Tuesday (except January)  
**Time** 4pm-7pm  
**Venue** Melb PC Headquarters  
Level 1, 479 Warrigal Rd, Moorabbin

## LINUX AND OPEN SOURCE

[linux@melbpc.org.au](mailto:linux@melbpc.org.au)

<http://member.melbpc.org.au/~linux>

**Convener** James Cox 9885 5503  
**Date** Second Tuesday (except January)  
**Time** 7pm-9.30pm  
**Venue** Melb PC Headquarters  
Level 1, 479 Warrigal Rd, Moorabbin

## MACE (MELBOURNE ATARI COMPUTER ENTHUSIASTS)

[mace@melbpc.org.au](mailto:mace@melbpc.org.au)

**Convener** Andrew Boschan 5426 1917 AH  
**Enquiries** 0500 818 448  
**Date** Third Sunday  
**Time** 10am-2pm  
**Venue** Melb PC Headquarters  
Level 1, 479 Warrigal Rd, Moorabbin

## MACEDON RANGES

[mrgpc@melbpc.org.au](mailto:mrgpc@melbpc.org.au)

**Convener** John Hunter 0406 868 226  
**Date** Third Sunday  
**Time** 2-4pm  
**Venue** Further Education Centre  
18 Hamilton St Gisborne

## MAKING MONEY ON THE INTERNET

[amsig@melbpc.org.au](mailto:amsig@melbpc.org.au)

<http://groups.melbpc.org.au/~amsig>

**Convener** George Skarbek 9561 6362  
Paul Hemsworth 9337 4947  
**Date** Second Saturday  
(except December and January)  
**Time** 10am-12 noon  
**Venue** Melb PC Headquarters  
Level 1, 479 Warrigal Rd, Moorabbin

## MICROCONTROLLER

[micro@melbpc.org.au](mailto:micro@melbpc.org.au)

**Convener** Philip Lew 0418 567 019  
John Hollow 0417 031 164  
**Date** Second Wednesday (except January)  
**Time** 7pm-9.30pm  
**Venue** Melb PC Headquarters  
Level 1, 479 Warrigal Rd, Moorabbin

## MICROCONTROLLER WORKSHOP

[micro@melbpc.org.au](mailto:micro@melbpc.org.au)

**Convener** John Shirt 0409 568 267  
Rob Brown 0419 285 806  
**Date** Second Saturday (except January)  
Fourth Saturday (except December)  
**Time** 12 noon-5pm  
**Venue** Melb PC Headquarters  
Level 1, 479 Warrigal Rd, Moorabbin

## MULTIMEDIA HOME ENTERTAINMENT (MHE)

[multimed@melbpc.org](mailto:multimed@melbpc.org)

<http://www.melbpc.org>

**Convener** John Hall 9803 2731  
[johnhall@melbpc.org.au](mailto:johnhall@melbpc.org.au)  
Kelvin Cording 9438 1047  
[kcording@bigpond.net.au](mailto:kcording@bigpond.net.au)  
**Date** First Friday (except January)  
**Time** 10am-12 noon  
**Venue** Wadham House 52 Wadham Parade  
Mount Waverley Melway 61 E12

## MUSIC

[music@melbpc.org.au](mailto:music@melbpc.org.au)

<http://groups.melbpc.org.au/~music>

**Convener** Yahya Abdal-Aziz, David Godfred  
**Date** Third Thursday  
**Time** 7.30pm-9.30pm  
**Venue** Melb PC Headquarters  
Level 1, 479 Warrigal Rd, Moorabbin



## MORNINGTON PENINSULA

[pennsula@melbpc.org.au](mailto:pennsula@melbpc.org.au)

<http://groups.melbpc.org.au/~pennsula>

**Convener** (interim) Lindsay Wiles 9775 3069  
[lwiles@westnet.com.au](mailto:lwiles@westnet.com.au)  
(interim) Ian Thomson  
[iaroth@netspace.net.au](mailto:iaroth@netspace.net.au)  
(interim) Colin Ackehurst  
[colin\\_a\\_ackehurst@bigpond.com](mailto:colin_a_ackehurst@bigpond.com)  
**Date** Third Monday (except December)  
**Time** 9.30am Day (general) Meeting  
**Venue** Mornington Information Centre  
320 Main St Mornington

## MORNINGTON PENINSULA DIGITAL IMAGING

[pennsula@melbpc.org.au](mailto:pennsula@melbpc.org.au)

<http://groups.melbpc.org.au/~pennsula>

**Date** Third Monday (except December)  
**Time** 12.30pm  
**Venue** Mornington Information Centre  
320 Main St Mornington

## MORNINGTON PENINSULA FAMILY HISTORY

[pennsula@melbpc.org.au](mailto:pennsula@melbpc.org.au)

<http://groups.melbpc.org.au/~pennsula>

**Date** Third Monday (except December)  
**Time** 2pm  
**Venue** Mornington Information Centre  
320 Main St Mornington Family History  
Group (Genealogy)

## NORTH EAST GENEALOGY

[negen@melbpc.org.au](mailto:negen@melbpc.org.au)

<http://member.melbpc.org.au/~negen/>

**Convener** Allan Medforth 9410 9034  
Wilma Staggatt  
**Date** First Tuesday (except January)  
**Time** 10am-12.45pm  
**Venue** Uniting Church Hall 19 Seddon Street  
Ivanhoe, parking at the rear, Melway 31 F8

## NORTH EAST DAYTIME

[neday@melbpc.org.au](mailto:neday@melbpc.org.au)

**Convener** Colin Lampshire 9857 5372  
or 0413 640 408 [lampshir@melbpc.org.au](mailto:lampshir@melbpc.org.au)  
**Date** Second Thursday (except January)  
**Time** 10am-12.15pm  
**Venue** Uniting Church Hall 19 Seddon Street  
Ivanhoe, parking at the rear, Melway 31 F8

Every alternate month we specialise in issues relating to  
Photography/Digital Imaging.

## NORTH EAST PHOTOGRAPHY/DIGITAL IMAGING

[neday@melbpc.org.au](mailto:neday@melbpc.org.au)

**Convener** Colin Lampshire 9857 5372  
or 0413 640 408 [lampshir@melbpc.org.au](mailto:lampshir@melbpc.org.au)  
**Date** Second Thursday of every **second** month  
(except January)  
**Time** 10am-12.15pm  
**Venue** Uniting Church Hall 19 Seddon Street  
Ivanhoe, parking at the rear, Melway 31 F8

## NORTH EAST ANDROID

**Convener** Colin Lampshire 9857 5372  
or 0413 640 408 [lampshir@melbpc.org.au](mailto:lampshir@melbpc.org.au)  
Kelvin Cording 9438 1047  
**Date** Third Wednesday (except January)  
**Time** 10am to 12 noon  
**Venue** Uniting Church Hall 19 Seddon Street  
Ivanhoe, parking at the rear, Melway 31 F8

## NORTH EAST

[neast@melbpc.org.au](mailto:neast@melbpc.org.au)

<http://groups.melbpc.org.au/~neast>

**Convener** Lynnette Hammet  
[lynnhammet@netspace.net.au](mailto:lynnhammet@netspace.net.au);  
Choi Lai  
**Date** Fourth Tuesday (except December)  
**Time** 7.30pm-9.30pm  
**Venue** Uniting Church Hall 19 Seddon Street  
Ivanhoe, parking at the rear, Melway 31 F8

## NORTHERN SUBURBS LINUX

[nslig@melbpc.org.au](mailto:nslig@melbpc.org.au)

<http://groups.melbpc.org.au/~nslig>

**Convener** David Hatton, Stephen Davidson  
**Date** Third Monday  
(except December)  
**Time** 7.30pm to 9.30pm  
**Venue** Community Meeting Room Watsonia Library,  
Ibbotson St Watsonia Melway 20 E4

## ONLINE SIG

(FORMERLY ANYWHERE, ANY-TIME – NEWSGROUPS)

[online@melbpc.org.au](mailto:online@melbpc.org.au)

<http://www.melbpc.org.au/faq/newsgroups.htm>

**Convener** Kevin Martin (evening only)  
5964 7627 or 0407 343 162  
**Venue** Melb PC Newsgroups and Forum

The Online SIG provides a 24-hour, 7-days-a-week  
place for members of the Melb PC User Group to read  
and write questions and comments on computing as  
well as non-computing topics.



# GROUP DETAILS

## PROGRAMMING

[program@melbpc.org.au](mailto:program@melbpc.org.au)

**Convener** Mohan Gupta 0421 214 081  
Roger Plant 0403 789 593  
**Date** Fourth Tuesday  
**Time** 6.30pm-9pm.  
**Venue** Melb PC Headquarters  
Level 1, 479 Warrigal Rd, Moorabbin

## RASPBERRY PI

**Convener** John Hall 9803 2731 [johnhall@melbpc.org.au](mailto:johnhall@melbpc.org.au)  
Lance Lloyd 9884 5559  
[lancelloyd@melbpc.org.au](mailto:lancelloyd@melbpc.org.au)  
**Date** Fourth Friday  
(except December)  
**Time** 10am-12 noon  
**Venue** Wadham House, 52 Wadham Pde  
Mount Waverly, Melway 61 E12

## SONY VIDEO PRODUCTION

**Convener** Roger Wragg [rdwragg@fastmail.fm](mailto:rdwragg@fastmail.fm)  
Bob Flack  
**Date** Second Wednesday  
**Time** 10am-12 noon  
**Venue** Melb PC Headquarters  
Level 1, 479 Warrigal Rd, Moorabbin

## SUNBURY

[sunbury@melbpc.org.au](mailto:sunbury@melbpc.org.au)  
<http://groups.melbpc.org.au/~sunbury>

**Convener** Kevin Day 9744 2514  
Kevin Hale 9740 5786  
**Date** Every Thursday  
**Time** 9.30am-12 noon

### New Users

First Thursday.  
Everyone welcome.

### Maintenance

Second Thursday.  
Fifth Thursday (when there is one).  
Problems discussed, sometimes solved.

### Main Meeting

Third Thursday. Demos, presentations etc.

### Linux

Fourth Thursday.  
A new experience.  
**Venue** Sunbury Senior Citizens Centre (back room)  
8 O'Shannassy Street Sunbury Melway 382 E4

## VIDEO INNER EAST

<http://users.tpg.com.au/adslo8nb/vie/index.html>

**Convener** Richard Balsillie 9809 4116  
**Date** Fourth Monday  
(except December)  
**Time** 7pm-9.30pm  
**Venue** Balwyn Library Meeting Room  
336 Whitehorse Road Balwyn.

## WAFFLE (WINE & FOOD LOVERS' EVENT)

**Convener** Phillip Lew  
Tom Rado 9807 4072  
**Date** First Wednesday  
**Time** After the monthly meeting  
**Venue** Fong's Chinese Restaurant, 725 Centre Rd  
Bentleigh East. Cnr. Francesco St. Melway 77 J1

## WASINT (WEB AND SOFTWARE INVESTMENT TOOLS)

[wasint@melbpc.org.au](mailto:wasint@melbpc.org.au)  
<http://groups.melbpc.org.au/~wasint>

**Convener** Richard Solly  
**Date** Second Tuesday (except January)  
**Time** 10.30am-12.30pm  
**Venue** Melb PC Headquarters  
Level 1, 479 Warrigal Rd, Moorabbin

## WEBSITE DESIGN

[webdesign@melbpc.org.au](mailto:webdesign@melbpc.org.au)  
<http://groups.melbpc.org.au/~webdesign>

**Convener** Fleur Stephens 0407 330 963  
**Date** Fourth Sunday  
(except December and January)  
**Time** 2pm-4pm  
**Venue** Melb PC Headquarters  
Level 1, 479 Warrigal Rd, Moorabbin

## WINDOWS 7&8

**Convener** John Swale [jswale@melbpc.org.au](mailto:jswale@melbpc.org.au)  
Jan Weiner 9796 2807 (co-convener)  
**Date** Third Saturday  
(except January)  
**Time** Windows 7 10am-12 noon  
Windows 8 1pm-3pm  
**Venue** Melb PC Headquarters  
Level 1, 479 Warrigal Rd, Moorabbin



## WYNDHAM

[wynd@melbpc.org.au](mailto:wynd@melbpc.org.au)

<http://groups.melbpc.org.au/~wynd>

**Convener** Chris Hughes 9731 0891, John Healey  
**Venue** Room 3 Central Park Community Centre  
Lonsdale Circuit off Franklin Blvd.  
Hoppers Crossing. Melway 206 J1  
**Date** Third Tuesday  
(except December and January)  
**Time** 7.30pm-9.30pm

## WYNDHAM MULTIMEDIA

[wynd@melbpc.org.au](mailto:wynd@melbpc.org.au)

<http://groups.melbpc.org.au/~wynd>

**Convener** Chris Hughes 9731 0891, John Healey  
**Date** Second Monday  
(except January)  
**Time** 7.30pm-9.30pm  
**Venue** Room 3 Central Park Community Centre  
Lonsdale Circuit off Franklin Blvd.  
Hoppers Crossing. Melway 206 J1

## YARRA RANGES

[yrig@melbpc.org.au](mailto:yrig@melbpc.org.au)

<http://groups.melbpc.org.au/~yrig>

**Convener** Bryan Paten 0429 430 640  
Shane Mason 9733 5390  
**Date** Fourth Tuesday (except December)  
**Time** 9.15am (followed by the Workshop)  
**Venue** Japara Community House  
13 Leith Road Montrose Melway 52 D7

## YARRA RANGES WORKSHOP

[yrig@melbpc.org.au](mailto:yrig@melbpc.org.au)

<http://groups.melbpc.org.au/~yrig>

**Convener** Bryan Paten 0429 430 640  
Shane Mason 9733 5390  
**Date** Fourth Tuesday (except December)  
**Time** After the 9.15am main meeting  
**Venue** Japara Community House  
13 Leith Road Montrose Melway 52 D7

## Everything iPad/iPhone

This is a joint venture between MelbPC and AUSOM with an emphasis on the Apple iPad and iPhone, and helping people understand the iOS environment.

Convenor: Dick Johnson 9857 7362  
E-mail to: [everything-ipad@ausom.net.au](mailto:everything-ipad@ausom.net.au)

**Next Meeting:  
21 May**

### 2:00 pm Syncing the iPad with Windows

*Presented by Annie Cumming*

Would you like to learn how to Sync your iPad with your PC using iTunes?

Annie will show you simply how to achieve this without tearing your hair out.

You will also be introduced to Apps that will teach you to get the most out of your PC using your iPad.

This will be a full two hour session with lots of time for questions and comments and there will be a short break around 3pm.



**Third Wednesdays, 2:00 pm - 4:00 pm (except January)**

**Moorabbin Interest Group Room - Level 1, 479 Warrigal Road, Moorabbin**



## Melb PC Library Information

As a service to members of Melbourne PC User Group, a reference library of approximately 600 computer books is provided at our library at our Moorabbin offices.

Members who come in to the office may browse the library in person. Books may be borrowed for one month, with a limit of three books on loan to any one member at one time.

To assist in book selection, a link to the catalogue of the available books is shown together with a copy of the library rules for the information of members.

Catalogue Listing to Dec 2013: ([http://www.melbpc.org.au/library/LIBRARY\\_Catalogue\\_01-12-2013.pdf](http://www.melbpc.org.au/library/LIBRARY_Catalogue_01-12-2013.pdf))

Some of the newer books include:

Windows 7 Inside Out  
Windows 7 Step by Step  
Windows 8 Bible  
Windows 8 Secrets  
Windows 8 Step by Step

Windows 8 Teach Yourself Visually  
Windows 8 for Dummies  
Windows 8 Inside Out  
Windows 8 Plain & Simple  
Windows 8.1 for Dummies

### FREE MEMBERS' AD

## DOES ANYONE USE THE EPSON STYLUS PHOTO RX510 PRINTER?

What a fantastic printer, a tremendous workhorse! Mine has just been "retired" after several years of excellent service – the scanner works perfectly but the paper transport is not working and is not economically repairable.

So I have four brand new, sealed, printer cartridges for sale: 1 x T0492: Cyan, 2 x T0493: Magenta, 1 x T0495: Light Cyan. RRP ~\$94 (Officeworks), will SELL for just \$55 for the lot.

I will also give the printer away for spare parts. **Contact: Peter Harvest 0412 107 666**







## Committee 2013–14

To contact a member of the Committee, please go to:

<http://melbpc.org.au/CommitteeContacts/>



**PRESIDENT**  
Harry Lewis



**VICE-PRESIDENT**  
Charles Wright



**TREASURER**  
Geoffrey Keenan



**SECRETARY**  
Ian Rankin



**MEMBER**  
Norman Elliman



**MEMBER**  
Phil Lew



**MEMBER**  
Lance Lloyd



**MEMBER**  
Don McKenzie



**MEMBER**  
Roger Wragg

The overall responsibility for Melb PC business lies with the Committee (except for matters reserved to general meetings). Our rules and Committee decisions have identified specific responsibilities as follows. Members wishing to discuss any of these matters are invited to contact the responsible person from this list, and on any other matter to contact the President or the Secretary, via

<http://melbpc.org.au/CommitteeContacts/>.

<b>President</b>	Harry Lewis
<b>Vice-President</b>	Charles Wright
<b>Secretary</b>	Ian Rankin
<b>Treasurer</b>	Geoffrey Keenan
<b>Buildings and facilities</b>	Roger Wragg
<b>Email upgrade</b>	President
<b>Internet management committee</b>	President
<b>Librarian</b>	Yahya Abdal-Aziz
<b>Membership and marketing</b>	Lance Lloyd

### Monthly meetings

Finding speakers	President
Hosting	Stewart Gruneklee

### SIG Co-ordinator

Norman Elliman

### Website

Development	President
Content	Vice-President
Technical development	Craig Mattson

*Note: all the above are members of the Committee 2013–14 except for Yaha Abdal-Aziz, Craig Mattson and Stewart Gruneklee.*



## INTERNET HELP (IHELP)

**For members needing assistance, iHelp is a group of “Users helping Users.” Their main role is to sort out Internet or general PC problems. Assistance can be obtained in various ways depending on your connectivity and convenience.**

### Internet Help (iHelp)

The main iHelp system for Melb PC members is accessed from the [Internet Services Page](#) on the Melb PC website under the link titled “Internet Help”, which goes to <http://ihelp.melbpc.org.au/helpdesk/iuser/index.asp>.

After entering your Membership Number and First Name, you are able to “Log a Service Request”, with details of your problem.

When an appropriate iHelper is available, they will contact you at your registered phone number or email address, which should therefore be kept up-to-date at the office.

All efforts will be made to ensure someone replying to your request is familiar with the

issue, however if the problem cannot be solved to your satisfaction, you may wish to refer to other Group resources as detailed below.

### Phone First Aid

This is a telephone support number for simple and urgent problems: call (03) 9276 4088, Monday to Friday between 10am and 3pm.

Outside these hours, or if iHelpers are not available, just leave a message on that number (including your membership details), and it will be passed onto the iHelp team.

If the problem cannot be resolved within 15 minutes it is generally referred to Internet Help, where an appropriate iHelper will follow up the inquiry.

---

## OTHER WAYS TO GET HELP

### FAQS

On the [Internet Services Page](#) there is a link to Frequently Asked Questions (FAQs) on using the Melb PC Internet Service. In many cases a solution will have already been documented.

### Online SIG (Newsgroups)

For those familiar with using newsgroups, we suggest that you subscribe to melbpc.connectivity, melbpc.computing.misc, or melbpc.general.

Alternatively, you can access the messages via an online web-based forum, via the [Internet Services Page](#). See the following page for more details.

### SIG Meetings

Most SIGs hold monthly meetings in locations around Melbourne. These provide the

opportunity for one-on-one discussion with knowledgeable local members. Details of SIGs can be found in *PC Update*, or from the [Internet Services Page](#) from the top link titled “Interest Group Pages.”

### SIG Workshops

Some SIGs hold monthly workshops, in locations around Melbourne. These provide the opportunity for hands-on assistance with your PC from local knowledgeable members.

Details of SIG workshops can be found in *PC Update*, or from the [Internet Services Page](#) from the top link titled “Interest Group Pages.”

Please contact the Convener at least 24 hours before attending so they can research the problem, and bring to the meeting any hardware or software that might be needed.



## Monthly Meeting Q&A

At the Moorabbin Monthly General Meeting, besides interaction with other members, there is always a Q&A session hosted by one of the Group's computer experts. If you have a straightforward question, this is often a good place to get a precise answer with additional feedback from the audience.

## Dial Help

The Dial Help service is described here:

<http://www.melbpc.org.au/help>.

If your problem relates to one of the listed categories, the relevant volunteer may be telephoned for specific advice. Calls can be made

between 9am to 5pm and 6.30pm to 9pm.

Please keep all calls short, particularly during business hours, and don't expect a volunteer to call you back on a mobile phone number.

## Home Visit Assist

This service is only for members who are restricted in their activities or mobility. This generally means those with an Age or Disability Pension.

The contact for Home Visit Assist is the Office Phone: (03) 9276 4000, or by email to:

[office@melbpc.org.au](mailto:office@melbpc.org.au).

## NEWSGROUPS VIA ONLINE WEB-BASED FORUM

Accessing the forum is a two-step process. The first step gains read-only access using your Melb PC credentials. i.e. username and password as for email or Webmail:

fdagg                      yourpassword

The second step, to enable posting of messages, requires a separate forum username and password i.e. you need to join the forum. Currently the only way to do this is to post a message in one of the newsgroups (use melbpc.general) using a news client such as Thunderbird. A forum membership is then automatically generated based on the name and email address used:

Fred Dagg                      fdagg@melbpc.org.au

This can be done on a member's behalf by sending an email to [online@melbpc.org.au](mailto:online@melbpc.org.au) detailing the name and email address you wish to use. Please use your real name as we're a friendly bunch, and note that the newsgroups are private and only accessible by fellow Melb PC members. You don't have to use your Melb PC email address.

Once the forum membership has been created you will receive an auto-generated email to confirm you really do want to join. Confirm and then use the forum's "forgotten password" link to generate a new password. This is all handled between the forum software and the user nominated email account so no-one else has access to the password.

Please note that using the forum for posting newsgroup messages is still somewhat experimental, but does work quite well.





## Membership Drive

### Introduce a new member\* to Melbourne PC User Group and receive credit towards your membership fees.

Dear Member,

Your friend will receive all the benefits you already enjoy – the digital magazine [*PC Update*], the help lines, the Special Interest Groups (SIGs), the monthly meetings, workshops, discounted products, email addresses and access to mobile broadband – and you will be helping your club to grow.

Each new member\* you enrol gives you two months' credit towards your membership renewal (approx. \$12 value against a full membership). The more new members you enrol, the more credit towards your next membership renewal. No limits apply.

You know how much you enjoy being part of Melbourne PC User Group. So why not bring along a friend to enjoy it too? Prospective new members are always welcome at the monthly or SIG meetings.

And every time you enrol a new member, you get 2 months' credit registered against your next membership dues.

(\*This does not include family members and anyone re-joining within 12 months of leaving Melb PC)



ABN 43 196 519 351  
(Victorian Association Registration No. A0003293V)  
Unit 26, 479 Warrigal Road, Moorabbin VIC 3189  
Telephone: (03) 9276 4000  
Email: [office@melbpc.org.au](mailto:office@melbpc.org.au)  
Web: [www.melbpc.org.au](http://www.melbpc.org.au)

### PCUPDATE Subscription for print version

Name		Membership Number	
Address		Current Contact Email Address	
Suburb	Post Code	Phone	

For	Feb	Mar	Apr	May	Jun	Jul	Aug	Sep	Oct	Nov	Dec	Total	\$	
Month												Amount		

Price: \$4.00 per magazine if you collect it from the office or purchase at the monthly meeting.

Add an Extra \$1.00 postage and handling if we mail your order.

**Price for a yearly subscription is \$55.00 inc mailing to your home address.**

**\*\*Please note current members receive a \$10 discount on the full year subscription.\*\***

#### Payment Details

Name on Card	Expiry Date on card	Signature	Date
			/ /



# MELB PC APPLICATION FORMS



## MELBOURNE PC USER GROUP INC.

### MEMBERSHIP APPLICATION FORM

Title	First Name	Last Name
Address		
Suburb		Post Code
Phone		Mobile Number
DOB	Preferred Email Address	
Referred by member: _____ full name or membership number /SIG _____		

### Annual Membership Fees — 15% Discount if you renew/join for 2 years!

Individuals	\$75 each .....
Additional Family Members (Spouse and children)	\$22 each .....
Pensioners/Adult students A (25+)*	\$60 each .....
Students B (14-25 yrs)	\$35 each .....

#### Please provide emergency contact details below.

Full Name
Phone no.
Mobile no.

### Additional Family Members

Name .....	Signature .....
Name .....	Signature .....

### Terms and conditions

- Adult students A must attach a photocopy of their student card or letter from their educational institution confirming full student status.
- All student B members must have a Student Card and have evidence of their age at time of joining.
- Pensioners must attach a photocopy showing both sides of their Centrelink Pension Concession Card. Change of family member(s) must be identified in writing to the club secretary.

I hereby apply for membership of Melbourne PC Users Group Inc. (A000329V) and agree to abide by its rules while I remain a member.

Signature \_\_\_\_\_ Date \_\_\_\_/\_\_\_\_/\_\_\_\_

### Payment Details

Name on Card	Expiry Date
Credit Card Number	
Signature	Date ____/____/____

### Email User Name Selection

List the user ("login") names you would like in order of preference. Write very clearly, to avoid our confusing certain letters. User names are expressed in lower case letters and must represent your real name in some recognisable way e.g. "John J. Jones" might request user names such as "john", "johnj", "jjones", etc. Any user name that is already allocated or deemed unsuitable in the opinion of the system administrators will not be allocated.

- Choice 1. \_\_\_\_\_@melbpc.org.au
- Choice 2. \_\_\_\_\_@melbpc.org.au
- Choice 3. \_\_\_\_\_@melbpc.org.au
- Choice 4. \_\_\_\_\_@melbpc.org.au



# MELB PC APPLICATION FORMS



ABN 43 196 519 351  
(Victorian Association Registration No. A0003293V)  
Unit 26, 479 Warrigal Road, Moorabbin VIC 3189  
Telephone: (03) 9276 4000  
Email: [office@melbpc.org.au](mailto:office@melbpc.org.au)  
Web: [www.melbpc.org.au](http://www.melbpc.org.au)

## EMAIL ACCOUNT APPLICATION

Membership No.	First Name	Last Name	DOB
Address		Current Email Address	
Suburb	Post Code	Phone	Mobile Number

### Email User Name Selection

List the user ("login") names you would like in order of preference, up to eight (8) lowercase letters, numbers may be used in place of letters. Write very clearly, to avoid confusing certain letters and numbers. User names are expressed in lower case letters only e.g. "John J. Jones" might request user names such as "john", "johnj", "jjones", "jjones2", etc. Any user name that is already allocated or deemed unsuitable in the opinion of the system administrators will not be allocated.

Choice 1.

Choice 2.

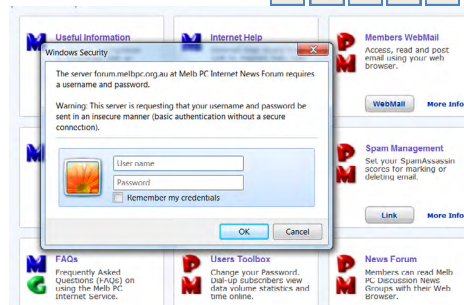
Choice 3.

Choice 4.


For email account hosted at [melbpc.org.au](http://melbpc.org.au) webmail which can also be accessed from any mail reading application such as Gmail, Outlook, Thunderbird etc.

Access to the Melb PC newsgroups and a discussion forum where you will find a friendly, helpful bunch of people. Discussions include computing and almost every other topic under the sun!

<http://melbpc.org.au/isp/>



ABN 43 196 519 351  
(Victorian Association Registration No. A0003293V)  
Unit 26, 479 Warrigal Road, Moorabbin VIC 3189  
Telephone: (03) 9276 4000  
Email: [office@melbpc.org.au](mailto:office@melbpc.org.au)  
Web: [www.melbpc.org.au](http://www.melbpc.org.au)

## Subscription for Monthly Disc

Name	Membership Number
Address	Current Contact Email Address
Suburb	Post Code
Phone	

For Month	Feb	Mar	Apr	May	Jun	Jul	Aug	Sep	Oct	Nov	Dec	Total Amount \$

Price: \$3.00 per disc if you collect it from the office or purchase at the monthly meeting.

Add an Extra \$1.00 postage and handling if we mail your order.

**Price for a yearly subscription is \$44.00 inc mailing to your home address.**

### Payment Details

Name on Card	Expiry Date on card	Signature	Date
			/ /



# MELB PC APPLICATION FORMS



## MELBOURNE PC USER GROUP INC.

ABN 43 196 519 351  
(Victorian Association Registration No. A0003293V)  
Unit 26, 479 Warrigal Road, Moorabbin Vic 3189 Australia  
Telephone: (03) 9276 4000  
Email: office@melbpc.org.au Web: www.melbpc.org.au

"Members helping Members"

## APPLICATION FOR MOBILE 3G/4G BROADBAND

Name		Membership Number
Address		Current Contact Email Address
Suburb	Post Code	Phone

\* SEE TERMS AND CONDITIONS OVERLEAF. YOU ARE REQUIRED TO SIGN THE TERMS AND CONDITIONS INDICATING YOU HAVE READ AND UNDERSTOOD THEM.

\* Complete all fields on this Mobile Broadband Application. This Information is required for the system database. Incomplete applications will be returned.

### 3G MOBILE DATA PLANS

2GB	4GB	6GB	8GB	10GB	15GB
<b>\$20</b> PER MONTH First month in advance (\$40), thereafter \$20 on a direct debit on credit card for 12 months. Total spend \$240.00 DEVICE INCLUDED EXCESS DATA USAGE COSTS \$7.50 PER 1GB OR PART THEREOF.	<b>\$30</b> PER MONTH First month in advance (\$60), thereafter \$30 on a direct debit on credit card for 12 months. Total spend \$360.00 DEVICE INCLUDED EXCESS DATA USAGE COSTS \$7.50 PER 1GB OR PART THEREOF.	<b>\$35</b> PER MONTH First month in advance (\$70), thereafter \$35 on a direct debit on credit card for 12 months. Total spend \$420.00 DEVICE INCLUDED EXCESS DATA USAGE COSTS \$7.50 PER 1GB OR PART THEREOF.	<b>\$40</b> PER MONTH First month in advance (\$80), thereafter \$40 on a direct debit on credit card for 12 months. Total spend \$480.00 DEVICE INCLUDED EXCESS DATA USAGE COSTS \$7.50 PER 1GB OR PART THEREOF.	<b>\$45</b> PER MONTH First month in advance (\$90), thereafter \$45 on a direct debit on credit card for 12 months. Total spend \$540.00 DEVICE INCLUDED EXCESS DATA USAGE COSTS \$7.50 PER 1GB OR PART THEREOF.	<b>\$55</b> PER MONTH First month in advance (\$110), thereafter \$55 on a direct debit on credit card for 12 months. Total spend \$660.00 DEVICE INCLUDED EXCESS DATA USAGE COSTS \$7.50 PER 1GB OR PART THEREOF.

☐ **2GB \$210 upfront for 12 month contract = \$17.50 PER MONTH**  
EXCESS DATA USAGE COSTS \$7.50 PER 1GB OR PART THEREOF. Total spend is \$210.00.

### 4G MOBILE DATA PLANS (3 to 4 times faster downloads than 3G)

3GB = \$30	6GB = \$40	9GB = \$50	12GB = \$60
PER MONTH \$30 on a direct debit on credit card for 12 months. Total spend \$360.00 EXCESS DATA USAGE COSTS \$7.50 PER 1GB OR PART THEREOF.	PER MONTH \$40 on a direct debit on credit card for 12 months. Total spend \$480.00 EXCESS DATA USAGE COSTS \$7.50 PER 1GB OR PART THEREOF.	PER MONTH \$50 on a direct debit on credit card for 12 months. Total spend \$600.00 EXCESS DATA USAGE COSTS \$7.50 PER 1GB OR PART THEREOF.	PER MONTH \$60 on a direct debit on credit card for 12 months. Total spend \$720.00 EXCESS DATA USAGE COSTS \$7.50 PER 1GB OR PART THEREOF.

**4G mobile devices:** ☐ USB modem \$60.00 ☐ Mini Wifi Modem \$85.00

☐ **3GB \$265 upfront for 12 month contract on 4G plan = \$22.00 PER MONTH**  
MODEM/S NOT INCLUDED EXCESS DATA USAGE COSTS \$7.50 PER 1GB OR PART THEREOF. Total spend is \$265.00.

### BYO PHONE VOICE and DATA on a 4G PLAN

**\$35 MONTHLY SIM only plan on 4G network,  
(\$420.00 total spend for 12 months, pay monthly)**

- Standard calls to friends and family within Australia^ ● \$500 of included value ● 1GB of data

Just bring your own phone and get connected on the Optus network.  
**Pricing Information:** The cost of a two minute standard national voice call is \$2.36. The cost of sending a standard national TXT is 30c. Additional data in Australia is 10c/MB (Charge per kB). ^Includes standard national & international voice & video calls & TXT & PXT; voicemail; calls to 1223, 1225, 13, 15 & 18 numbers; & re-routed calls.

#### PAYMENT

\*Authorise a direct debit against your credit card for the requisite amount as required. Cheques only accepted for the 12 month contract amount. And return it to : Melbourne PC User Group. Suite 26, Level 1, 479 Warrigal Road Moorabbin VIC 3189

Name on Card	Signature*	Date / /	Amount
<div> <input type="text"/> <input type="text"/> <input type="text"/> <input type="text"/> <input type="text"/> <input type="text"/> <input type="text"/> <input type="text"/> <input type="text"/> <input type="text"/> <input type="text"/> <input type="text"/> <input type="text"/> <input type="text"/> <input type="text"/> <input type="text"/> </div>			Expiry Date

#### OFFICE USE ONLY

S/N	SIM	WiFi Key
-----	-----	----------



## Melb PC Mobile Broadband Internet Terms and Conditions

### A. Definitions

"Melb PC" means Melbourne PC User Group incorporated or its assignee:

"Member" means a financial member of Melbourne PC User Group and includes:

- "Full Member" A person accepted into the Group after payment of the current full membership fee, or the related Student or Pensioner concession fee.
- "Family Member" A domiciled spouse, partner, child or relative of a full member accepted to participate in activities of the Group and use that Member's Internet account after payment of the Family Membership fee: the subscriber" means the MelbPC full member who has accepted the Melb PC Internet Agreement and paid fees for the subscription period and includes both Full and Email account subscribers. (see Level of Description); "subscription periods" means the period in advance for which the subscriber has paid in full being one of the periods of subscription offered by Melb PC from time to time.

### B. Subscription type & Details.

Subscription Type	Annual Fee or Monthly Fee	email & Newsgroup Storage or Mail Quota (Limit)	Browsing	Time Limit	Home Page Storage	Download Limit	When Limit Reached
3G Mobile Broadband 2GB 3G Mobile Broadband 4GB 3G Mobile Broadband 6GB 3G Mobile Broadband 8GB 3G Mobile Broadband 10GB 3G Mobile Broadband 15GB	\$210pa or \$20 pcm \$30 pcm \$35 pcm \$40 pcm \$45 pcm \$55 pcm		Yes			2GB pcm 4GB pcm 6GB pcm 8GB pcm 10GB pcm 15GB pcm	Excess data usage on all plans costs \$7.50 per 1GB or part thereof
4G Mobile Broadband 3GB 4G Mobile Broadband 6GB 4G Mobile Broadband 9GB 4G Mobile Broadband 12GB	\$30 pcm \$40 pcm \$50 pcm \$60 pcm		Yes			3GB pcm 6GB pcm 9GB pcm 12GB pcm	Excess data usage on all plans costs \$7.50 per 1GB or part thereof
4G Voice and Data Plan	\$35 pcm		Yes			1GB pcm	Excess data usage on all plans costs \$7.50 per 1GB or part thereof
Email account (www.outlook.com)	\$0	5GB	nil		Nil	nil	
ADSL Coming Soon	NA						

The above charges and details are subject to change from time to time. Limits and Time Quota: daily (non-cumulative) plus bonus time in non-peak periods.

Email Account Subscriber (available to all Melb PC Members without charge)

### C. Description of Service(s)

#### General:

Melbourne PC User Group Inc. A0003293V (Melb PC) Internet Service network (the Network) is a service owned and operated by Melb PC for its members. It is a subscriber-funded service administered by the Internet Management Subcommittee (the subcommittee).

Function of the Melb PC Network: The primary function of the Network is to support the transfer of information to and from Melb PC members and the International community, subject to the terms of this agreement.

Access Software: The subscriber will need to acquire suitable mail, news and Web software from our shareware library or other resources. However, Melb PC makes available a configuration kit that automates his process for those who require it.

Accounts: Accounts are issued only to individuals, not company names; Melb PC may reject an application without stating a reason.

Support: Volunteers offer their help in local newsgroups and via an Internet Help team with interaction through Web Boards, e-mail and direct telephone support.

Duration: The subscription to the Network is for one year from the date of acceptance. It automatically terminates upon expiry of membership of MelbPC if that occurs earlier.

Acknowledgment: Successful applicants will include individuals whose forms are correctly filled out and whose funds have been transferred to the Melb PC Bank account.

Net Etiquette: Melb PC endorses adherence to ("Net etiquette" or "Netiquette") as deemed by the subcommittee from time to time and to prevailing International standards widely accepted as suitable behavior for using the Internet.

### D. Terms of Agreement

- The subscriber asks Melb PC to provide a level of Internet access and Melb PC agrees to do so.
- This agreement starts when an authorized officer of Melb PC has executed it and Melb PC has received a cleared payment for the subscription period.
- If the subscriber renews this agreement for a further subscription period, this agreement applies to the renewed subscription period unless the parties agree otherwise in writing.
- The subscriber acknowledges that:
  - Continuity and speed of the Internet access depends on a wide range of factors many of which are beyond the control of Melb PC.
  - Melb PC has no control over the accuracy of appropriateness of any information on the internet.
  - Melb PC is not responsible for any material available on the Internet.
  - The subscriber's Internet access may be interrupted by equipment failure, the need for routine maintenance peak demand and so on.
  - Melb PC cannot guarantee that the subscriber will be able to secure access at any given time or that fluctuations in demand by other subscribers will not prevent the subscriber from using the full amount of the maximum daily time allowance on any given day.
  - Melb PC cannot guarantee that subscriber's home pages will always be available.
  - Dial up and Mobile Broadband Internet Subscribers are responsible for writing and uploading their own home pages and keeping backup copies of same. Melb PC does not back up these home pages. Subscribers will need to reload their own home pages in the event that the Melb PC facilities suffer any data loss.
  - The right to publish and communicate using home pages is granted to full Internet subscribers in the spirit of user group activities of sharing and furthering the computing experience. The quality of the Melb PC Internet service will be protected by Melb PC reserving its right to suspend the access to any publications of a subscriber who generates a disproportionate amount of Internet traffic. Subject to matters of the kind referred to in the previous clause and to the subscriber's access limits, Melb PC will use its best endeavors to keep Internet access available continuously and to allow the subscriber to have access for the current daily time allowance as set from time to time.
- The subscriber will indemnify Melb PC against any liability, claim, action, suit, demand, loss, cost or expense arising out of or in any way connected with this agreement or Internet access, including without limitation any negligence by Melb PC, its servants or agents.
- The subscriber will pay fees according to Melb PC's standard pricing list from time to time, and a copy of the list certified by an officer of Melb PC is conclusive evidence of the prices applicable at any time.
- Any notice given about any matter concerning this agreement may be given by clicking an accept button following the display of the agreement on a web page, by fax, e-mail or post at the last fax number email or postal address notified to the sender and is deemed to have been received at the time when it would have arrived in the ordinary course of the relevant type of transmission.
- Melb PC may change any term of this Agreement or make additional rules at any time by means of notification delivered in accordance with clause 9. Subscriber may refuse to accept any such change and terminate or her Internet access and receive a pro-rata refund for any paid subscription if a request to this effect this received within 14 days from the deemed receipt date of a notice of changes. Should a subscriber continue to keep using the service past the date of the notice deemed received as described in clause 9, the subscriber shall be deemed to accept the changes. A copy of the rules certified by an officer of Melb PC is conclusive evidence of the rules applicable at any time. The rules from time to time will apply as if they were set out in full as terms of this agreement.
- The subscriber must not deliberately or recklessly do anything that damages Melb PC's equipment, software, setup or services.
- The subscriber must not use Internet access to annoy, harass or harm other Internet users including sending of viruses either wittingly or unwittingly and the sending of spam or unsolicited bulk email.
- The subscriber must not use Internet access for any unlawful purpose or in any unlawful manner.
- Melb PC does not review any publications or communication and does not verify, endorse, or otherwise take responsibility for the content of same.
- Subscribers are legally responsible for their own publications and communications.
- The subscriber will keep safe and confidential any access numbers; codes or passwords allotted to them by Melb PC and notify Melb PC without delay of any compromise of that information.
- Melb PC may suspend or terminate the subscribers Internet access immediately if the subscriber breaches this agreement wittingly or unwittingly or fails to promptly pay any money owed to Melb PC or ceases to be a member of Melb PC.
- Melb PC may delete without notice any material found on its storage disks without giving any reason for doing so.
- Melb PC may make and keep any record it requires for the purpose of this agreement or the rules or for the operation of its services or as required by the law or its officers.
- The subscriber must not transfer, sell or share internet access rights, or allow the account to be used by any other person, other than those Melb PC Family Members who are listed on this application and have paid the relevant charges.
- The user's last name must be displayed in all e-mail and news messages. The user's first name or initials may be displayed as desired.
- Commercial traffic, in the form of private messages and advertisements in newsgroups designated for that purpose, is permitted within the bounds of Net etiquette.
- The 'Organisation' field in private email or public newsgroup article headers must always be Melbourne PC User Group Australia, the name of the service provider. Any other organisation or business name is permitted only in the four-line (maximum) "signature" text that is optionally inserted at the end of the message or article.
- The "From" field used in email and news messages may be the Melb PC assigned email address. e.g. j.jones@melbpc.org.au or a "Spam-trap" address, e.g. j.jones@notspam.org.au or, subject to Clause 22 an external address. e.g. jones@hotmail.com.
- Melb PC may assign its rights and obligations to full Internet Subscribers under this agreement to an Internet access provider that is of equal standard to Melb PC and after notice of assignment is given to the subscriber, this agreement shall have operation as if it had been entered into between the assignee and the subscriber and Melb PC's rights (except for its right to recover any money owed to it immediately before the assignment) and obligations under this agreement shall be at an end. Services to Associate internet Subscribers shall be limited to the period Melb PC is able to provide them from its own resources.
- The parties submit to the law of Victoria, Australia in relation to any the interpretation of this agreement, or any dispute arising out of it.
- To the extent permitted by law and except as expressly provided to the contrary in this Agreement, all warranties whether express, implied, statutory or otherwise, relating in any way to the subject matter of this Agreement or to this Agreement generally, are excluded Where legislation implies in this Agreement any condition, or warranty and that legislation avoids or prohibits provisions in a contract excluding or modifying the application of or the exercise of or facility under such term, such term shall be deemed to be included in this Agreement. However, the liability of Melb PC for any breach of such term shall be limited at the option of Melb PC, to any one or more of the following if the breach related to goods, the replacement of the goods or the supply of equivalent goods; the repair of such goods; the payment of the cost of replacing the goods or of acquiring equivalent goods, or the payment of the cost of having the goods repaired; and if the breach relates to services the supplying of the services again; or the payment of the cost of having the services supplied again. To the extent permitted by law and except as expressly provided to the contrary in this Agreement Melb PC shall not be under any liability (contractual, tortious or otherwise!) to subscriber in respect of any loss or damage (save for only personal injury and death) howsoever caused, which may be suffered or injured or which may arise directly or indirectly in respect to the supply of goods or services pursuant to this Agreement or the act, failure or omission of Melb PC.
- Accounts may be suspended without notice to stop transmission of network packets that threaten or have the potential to threaten the security or normal operation of any computer or device on the local or wider network. Such packets are categorised solely by the Internet Management Subcommittee. Users of accounts suspended without notice will be advised by telephone or writing within two working days of the nature of the packets originating from their account. Lifting of the suspension will require the registered account holder to provide evidence of confirmed action being taken to prevent further the transmission of such threatening or potentially threatening packets.
- The Description of Service "Internet Access Agreement" and the services as described on this application form constitute the entire agreement between the partner and neither of them relies on any term, condition, warranty, collateral contract, representation or promise not set out in those parts of these forms.
- Authorised by Melb PC Committee, 1<sup>st</sup> September 2013

I have read the terms and conditions

signed.....dated.....



## Melbourne PC User Group Monthly Meeting

Wednesday, 7 May at 7pm

**Before the break, our SIG feature this month will be:**

**"The Raspberry Pi SIG – 2014 Update"**

**John Hall will talk about the latest projects that the Mount Waverley Raspberry Pi SIG are undertaking**

**After the break: Guest speaker TBA**

### MELBOURNE PC USER GROUP INC.

**Melb PC Headquarters Suite 26 Level 1, 479 Warrigal Road Moorabbin (Corner Cochranes Rd)**

**Melway: 78 D8**

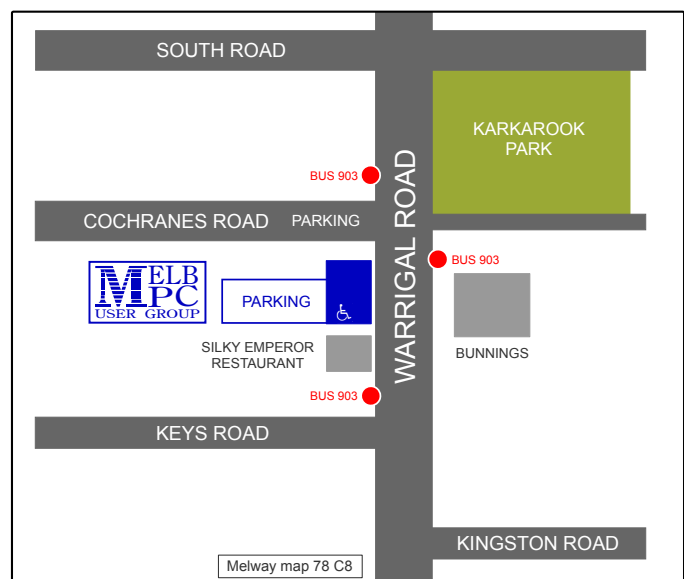
**In the evening there is lift access to the 1st floor from the carpark. **

#### **Public transport options**

**Public transport users can take Smart Bus 903 from several train stations.**

**The closest are:**

- **Mentone station on the Frankston Line (5 minutes away).**
- **Oakleigh Station on the Pakenham/Cranbourne line (10 minutes away).**



### Monthly Meeting on Disc

The Monthly Disc contains video footage of each month's meeting.

This month's video is of the April 2014 meeting.

Cost: \$3 each (\$4 with postage) or \$44 for an 11-issue subscription (postage included).

Pick up from: monthly and SIG meetings, the Melb PC office.

For further details: [office@melbpc.org.au](mailto:office@melbpc.org.au).

For subscription form, see [Page 44](#).





## What's On In May 2014

js14

Sunday	Monday	Tuesday	Wednesday	Thursday	Friday	Saturday
<b>Colour Codes</b> <b>Black:</b> SIG meetings at Melb PC H.Q. Moorabbin. <b>Blue:</b> SIG meetings held at other locations. <b>Dotted Box:</b> No SIG meeting held this month.				<b>1</b> <b>Ballarat</b> (7.30pm - 9.45pm) <b>Sunbury Daytime</b> (New Users 9.30am)	<b>2</b> <b>Essendon</b> (Main Meeting 9.30am) <b>Multimedia and Home Entertainment</b> (Wadham House 10am)	<b>3</b>
<b>4</b>	<b>5</b>	<b>6</b> <b>North East Genealogy</b> (10am - 12.45pm)	<b>7</b> <b>Monthly Meeting</b> Melb PC H.Q. Moorabbin 7pm sharp	<b>8</b> <b>E-Book</b> (7pm - 9.30pm) <b>North East Daytime</b> (Includes Photography - Digital Imaging Ivanhoe 10am - 12noon) <b>Sunbury Daytime</b> (New Users 9.30am)	<b>9</b> <b>Casey PC</b> (Narre Warren Library 12.30pm - 3pm) <b>Essendon</b> (Open Forum 9.30am) <b>Hardware</b> (Wadham House 10am)	<b>10</b> <b>Microcontroller Workshop</b> (12noon - 4pm)
<b>11</b> <b>Mt Waverley East Workshop</b> (10am - 2pm)	<b>12</b> <b>Access</b> (6.30pm - 8.30pm) <b>Wyndham</b> (General 7.30pm - 9.30pm)	<b>13</b> <b>WASINT</b> (10.30am - 12.30pm) <b>Everything Apple</b> (2pm - 4pm) <b>Linux Workshop</b> (4pm - 7pm) <b>Linux</b> (7pm - 9.30pm)	<b>14</b> <b>Video Production</b> (Sony Vegas 10am) <b>Communications</b> (7pm - 9.30pm) <b>Microcontroller</b> (7pm - 9.30pm) <b>East</b> (7.30pm - 10pm)	<b>15</b> <b>Music</b> (7.30pm - 9.30pm) <b>Bayside</b> (10am - 12 noon) <b>Sunbury Daytime</b> (General Meeting 9.30am)	<b>16</b> <b>Essendon</b> (Check website for meeting details. 9.30am) <b>Photoshop</b> (Digital Images Wadham House 10am)	<b>17</b> <b>Windows 7 &amp; 8</b> (Windows 7. 10am - 12noon Windows 8. 1pm - 3pm )
<b>18</b> <b>MACE</b> (10am - 2pm) <b>Beginners East</b> (10am - 12.30pm) <b>Genealogy</b> (1pm - 3.30pm) <b>Macedon Ranges</b> (Gisborne 2pm - 4pm)	<b>19</b> <b>Graphics</b> (7pm - 9.30pm) <b>Nth Subs Linux</b> (7.30pm - 9.30pm) <b>Peninsula</b> (Meeting 9.30am Graphics W'shop 12.30pm Genealogy 2pm)	<b>20</b> <b>Wyndham</b> (Multimedia 7.30pm)	<b>21</b> <b>Everything iPad / iPhone</b> (2pm - 4pm) <b>North East Android</b> (Ivanhoe 10am - 12noon)	<b>22</b> <b>Sunbury Daytime</b> (Maintenance 9.30am. Meeting also held on a 5th Thursday)	<b>23</b> <b>Casey Workshop</b> (Narre Warren Library 12.30pm - 3pm) <b>Essendon</b> (Check website for Meeting Details 9.30am) <b>Raspberry Pi</b> (Wadham House 10am)	<b>24</b> <b>Hardware Workshop</b> (10am - 12noon) <b>Microcontroller Workshop</b> (12noon - 4pm)
<b>25</b> <b>Website Design</b> (2pm - 4pm)	<b>26</b> <b>Video Inner East</b> (Balwyn 7pm - 9.30pm)	<b>27</b> <b>Programming</b> (6.30pm - 9pm) <b>North East</b> (Evening 7.30pm - 9.30pm) <b>Yarra Ranges</b> (Meeting 9.15am Workshop 11.30am)	<b>28</b> <b>Video Production</b> (Pinnacle 9.30am) <b>Essendon</b> (7pm - 9pm)	<b>29</b>	<b>30</b>	<b>31</b>