

Official Magazine of the MELBOURNE PC USER GROUP INC.

PC UPDATE

Secure Passwords

how to make passwords like
\$1tyh1wdbbwtrtp1a\$0
unforgettable



Plus:

- What device do you need?
- My life with computers
- Raspberry Pi coding



www.melbpc.org.au

MELB PC PURPOSES

THE PURPOSES OF THE GROUP are to conduct, on a non-profit basis, activities aimed at the effective utilisation of the personal computer and to endeavour to achieve this by:

- Advancing computer literacy
- Advancing the art and science of information processing through education and interchange of ideas
- Keeping members abreast of developments in computing and information technology and enabling members to exchange information and experience
- Representing computer users in public debate and by acting and speaking on their behalf where they would be affected by proposed legislation or other regulatory measures
- Providing a forum for the exchange of views among computer users and between computer users and the computer industry
- Co-operating supporting or joining with, or in, other organisations with similar purposes
- Undertaking other activities beneficial to the Group

In order to further its purposes the Group shall have the rights, powers and privileges of a natural person.

PC UPDATE

SEPTEMBER 2014 • VOLUME 31 • ISSUE 5

EDITOR/ART DIRECTOR

Katharine Shade, CCE Design
editorpc@melbpc.org.au

CONTRIBUTORS

Paul Addis, Faye Barkla, Jean de Neef, Karol Doktor, Craig Evans, Lance Lloyd, Craig Mattson, Tim McQueen, Julie Parkes, John Sapsford, George Skarbek, Gary Taig.

SUBEDITING/PROOFING/WORKERBEES

Stephen Lake, Harry Lewis, Lance Lloyd, Tim McQueen, Julie Parkes, Selma Seknow, Gary Taig

TECHNICAL ADVISORS

Roger Brown, Kevin Martin, Malcolm Miles, Dennis Parsons

SIG COORDINATOR

Norman Elliman

CALENDAR AND MAPS

John Swann

PUBLISHED BY

MELBOURNE PC USER GROUP INC.

Suite 26, Level 1, 479 Warrigal Road
Moorabbin, VIC 3189

Office hours	9am-5pm
Phone	(03) 9276 4000
Email	office@melbpc.org.au
Office Manager	Dianne Vogt
Junior Staff	Lauren George, Amber Scarff

ABN: 43 196 519 351

Victorian Association Registration # A0003293V

COPYRIGHT

Melbourne PC User Group Inc. reserves all copyright in the content and design of *PC Update* (this publication).

PC Update must not be republished in whole or in part using print, electronic or any other formats (including optical and flash media together with the Internet).

You may make a copy of part or all of *PC Update* on your local computer for your own use, and print a hard copy of *PC Update* for your own use, provided that you do not remove any copyright notice on any page. You may not, in any form, or by any means:

- cause any of the material in the *PC Update* to be framed or embedded in a website,
- commercialise any material in *PC Update*,

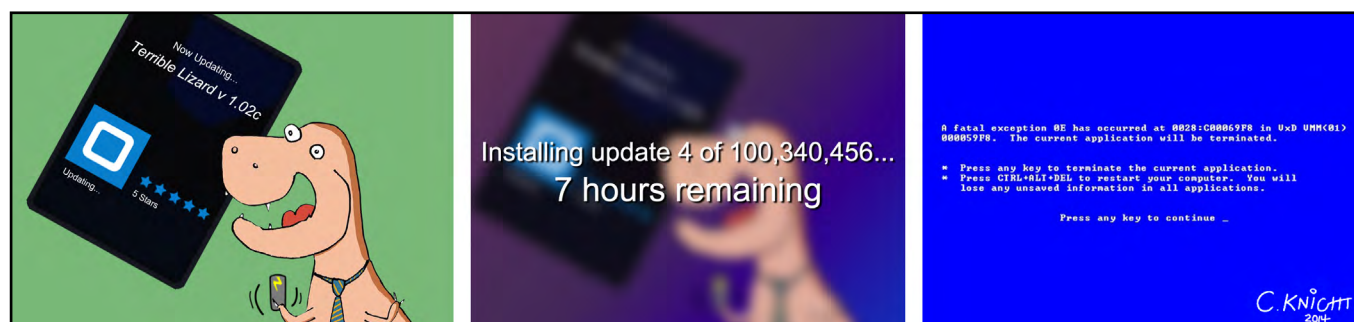
- otherwise reproduce, adapt, store in a retrieval system, transmit, print, display, perform, publish or create derivative works from any part of the content or design of *PC Update*, except with our prior written consent or as permitted by applicable copyright legislation.

Members who breach copyright will forfeit their membership rights and may be subject to legal action from the authors and copyright holders.

Copyright © 2014 Melbourne PC User Group Inc. and individual authors. Except where otherwise stated, all material is the copyright of the author. Contributions from authors may not be copied without the author's prior written permission.

Columns	<i>PC Update</i> Editor's Report – Katharine Shade	5
	Melb PC President's Report – Harry Lewis.....	6
Articles	What device do you need? – Tim McQueen	9
	My Life With Computers (Modern Times) – Karol Doktor ..	12
	A Secure Password – Gary Taig	16
Columns	Raspberry Pi – Lance Lloyd	19
	Q&A – George Skarbek.....	21
SIGS	Local/General and Special Interest Groups.....	23
	Group Reports	24
	Group Details.....	28
Melb PC	Notices	34
	Committee.....	35
	How to Get Help	36
	Monthly Meeting.....	43
	Calendar.....	44

Terrible Lizard



© 2014 C. Knight

iHELP (See [Page 36](#) for more details.)

iHelp

The main "Internet Help" system for Melb PC members:

<http://ihelp.melbpc.org.au/helpdesk/iuser/index.asp>

First Aid/Live Chat

For simple and urgent problems.

(03) 9276 4088, Monday to Friday 10am – 3pm if no web page access.

Or select Live Chat from the "Internet Help" link above.

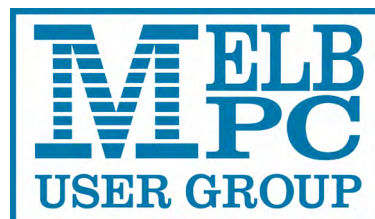
ONLINE SERVICES

Melb PC Home Page

<http://www.melbpc.org.au>

Internet Services Page

<http://www.melbpc.org.au/isp/>



MELB PC COMMITTEE

President	Harry Lewis
Vice-President	Roger Wragg
Treasurer	Geoffrey Keenan
Secretary	Ian Rankin

Members

Norman Elliman	Don McKenzie
Phil Lew	Lance Lloyd

To contact a member of the Committee, please go to:

<http://melbpc.org.au/CommitteeContacts>

HONORARY LIFE MEMBERS

Ray Beatty	John Morris
Lloyd Borrett	Ash Nallawalla
Dave Botherway	Ian Rankin
Douglas Brooke	George Skarbek
Sean Clarke	Peter Smith
Thomas Coleman	Richard Solly
William Dair	John Swale
Guiseppe De Simone	Gary Taig
Bruce Elliott	Ken Thomas
Bill Ford	David Webster
John Hall	Glen Webster
Stan Johnstone	Ian Webster
Philip Lew	Yvonne Webster
Barry Martin	Charles Wright
Barry McMenomy	

SUBMISSIONS

Email your submissions as file attachments to editorpc@melbpc.org.au. Standard document formats are accepted (e.g. .txt, .rtf, .doc, .docx). Please keep formatting to a minimum.

Accompanying graphics should be separate high-quality JPG or PNG attachments – NOT embedded in the document.

Members' free ads must be technology related and include the member's full name.

AUTHOR RELEASE

All authors must lodge a completed submission form, available from <http://ccedesign.com.au/melbpc/release-form>.

SUBMISSION DEADLINES

October Newsletter: 18 September

November *PC Update*: 6 October
(13 October for SIG reports)

PC Update Editor's Report

September 2014

By Katharine Shade

editorpc@melbpc.org.au



How are your manners?

When you send an email, do you write "Dear Fred", and "Yours Sincerely"? Or do you launch into it without even a "Hi"?

It's hard to keep up with what's considered acceptable. What is rude to one person is not to another, and it can change depending on the medium you are using (email, text messages, Facebook etc).

When you disagree with someone on a forum, do you make an effort to remain polite, or do you let the lack of personal connection and visual cues bring out the worst in you? (I'm sure it's the former!)

The Internet contains examples of the best and the worst manners of humanity. Unfortunately there is a tendency for the bottom end to flourish, with those who have little self-restraint being essentially given a free rein in this outlet with little consequences.

With the tendrils of the Internet reaching into every nook and cranny across the globe, we can access the world's wonders and enrich our lives to an extraordinary degree. But the reach of the Internet also means we can be confronted with the kind of verbal abuse we wouldn't normally encounter in our day-to-day lives.

It's easy to get drawn into what can become emotionally charged conversations. I am reminded of the wonderful xkcd comic, where someone sitting at the computer isn't ready to go to bed yet as "Someone is wrong on the Internet" (<http://xkcd.com/386/>).

I've had many nights staying up until the wee

hours trying to argue a point which seems blindingly obvious to me, battling fatigue, social and cultural barriers, and an inability to turn the computer off without reading just one more thread...

It can also bleed into "real" life. I have a couple of times in the past become a target of online abuse, due mainly to standing up to bullies and misogynistic creeps in what were otherwise useful forums, and have even had my personal details posted with unsavoury messages attached to them. Luckily it didn't go any further than that.

Something as innocuous as reading the comments of a YouTube video can surprisingly quickly lead to some pretty confronting content (YouTube comments seem to be amongst the Internet's worst for some reason).

The videos themselves can also be a source. I was once looking for some material for my kids to watch, and while one particular video started fine, a voice-over suddenly started which was *not* the original dialogue, and which luckily my kids didn't understand! I've increased my vigilance, and I have a lot of challenges ahead ensuring they are not exposed to content they are not ready for and teaching them how to navigate the online world.

What is the future of YOUR magazine going to be? *PC Update* has a long history and a great reputation. While so many magazines – both User Group and Commercial – have long gone, *PC Update* has soldiered on through the club's ups and downs, and continues to be one of the central pillars of the Melbourne PC User Group.

Please read the President's Report carefully and fill out the survey linked from there. ☺

Melb PC President's Report

September 2014



By Harry Lewis

president@melbpc.org.au

Our AGM is appearing just over the horizon.

This year, for the first time, we are relying mainly on email and on our website to get AGM notices and papers to members. This change was made possible by the rule-changes agreed at our AGM in 2013. Please read the notice on the following page.

Melb PC finances (continued)

As I reported in the August Newsletter, your Committee has been active in reviewing the accounts for the financial year just finished, and in taking all means available to bring our budget into balance. We have been working on reducing costs wherever we can without damaging our services to members, with the able assistance of our Office Manager, Dianne Vogt.

As readers know, we have already cut the cost of production of *PC Update* by alternating it month-by-month with our Newsletter. Our six-month trial period is coming to an end and we invite you all to advise us on the best course of action for the future by completing our survey. (Details on the following page.)

A major item in our costs is the rent we pay for our internet provision in Burnley – we are by now very confident that we will cease paying rent after September. We owe a huge debt to our volunteers who have been preparing the new infrastructure to house our legacy internet services at Moorabbin – our website, members' websites, and our newsgroups.

Less visible but equally important are the reductions in cost that have been achieved across a broad front in overheads such as insurance, heating and lighting. We have been looking

carefully at every item of expenditure to see if we can find a way of preserving necessary services while reducing the price.

This year has seen real progress towards bringing our budget into balance, but we also need a contribution from members who value our club and who wish to see our level of service maintained. The Committee has resolved to propose to the AGM in November a rise to the membership subscription of \$20 – a little less than 40 cents per week. Over the following 18 months this will bring our finances very close to being in balance, at the very least with a small but much more manageable deficit.

In the meantime we are exploring new ways of generating income from "sleeping assets". But the single best way for members to support our club and assist it in preserving its services is for them to recruit a friend as a member, particularly among those who attend SIGs every now and then.

Melb PC's 30th birthday celebrations

As the December date approaches George Skarbek and John Swale have taken over the lead role in planning for our celebrations. We are most grateful to them. We hope to involve as many members as we can, while also showcasing our club to a wider public. Details are still under discussion but we hope to be enjoying glimpses of the early days from several of our pioneer members who built Melb PC. George and John would appreciate suggestions from as many members as possible. If you have ideas for ways in which we might involve members and a wider public, please send a message to George or to John: gskarbek@melbpc.org.au, jswale@melbpc.org.au

Timing of our next email upgrade

...which we trust will be the last for many years to come. The message to members is still: watch your inboxes! We expect to send out guidance to members using their Melb PC email addresses on preparing their new mailboxes, starting in mid-September.

The process of setting up your new account is very similar to the one you followed for your account at outlook.com. We shall give you a temporary password. You will login at a website using that password, change your password, and tell the website which country you are in. After that you will be able to set up a new account in your own email program to access the new email service.

We hope to switch the service in mid-October, after which incoming email to Melb PC accounts will arrive at the new service, which rejoices in the title "Office 365 Enterprise E1" (as made available to not-for-profit organizations). Once the move is complete we shall, within a single year, have acquired mailboxes five thousand times larger

than our old ones. Over-quota mailbox problems should become a distant memory for all our members. (That's not a challenge!) Among the new facilities that do not exist at outlook.com are tools for group working and collaboration that seem likely to help us with group mailouts, giving us tools that work for us as effectively as our former email alias system which was lost on the transfer to outlook.com. But our first priority will be to assist all our users in setting up their new mailboxes.

PC Update and the Newsletter: please complete our survey

All members are invited to help the Committee to decide what is the best plan for the future, for Melb PC publications to members. Please go to this link: <https://www.surveymonkey.com/s/QTm8YP8> and complete the survey – it is short and will take you only a couple of minutes. The membership numbers of those of you who complete the survey (all of you, I hope) will be entered into a raffle, with a 2 TB USB 3 disc drive as the prize. 🍀

2014 Annual General Meeting

The 31st Annual General Meeting of the Melbourne PC User Group Incorporated will be held at 7.30 pm on Wednesday, November 5th, 2014 at Level 1, 479 Warrigal Road, Moorabbin.

Download a copy of the AGM Agenda and Call for Nominations: [melbpc.org.au/AGM2014/Notice of Melbpc AGM 2014.pdf](http://melbpc.org.au/AGM2014/Notice_of_Melbpc_AGM_2014.pdf)

Ian Rankin, Secretary



Live Streaming of the Monthly Meeting

You can watch the Monthly Meeting live on the first Wednesday of every month (except January), if you go to the following URL:

<http://tv.mpcug.mobi>

The streaming starts at 7pm and goes until the meeting finishes around 9.30pm.

Monthly Meeting Videos for Download

Members will also be able to access videos of the meetings after they have occurred at:

<https://websec.melbpc.org.au/videos/>

Access them using your Melb PC username and password.

What device do you need?

By **Tim McQueen**

With the number of devices available, this seems to be a difficult question. It's not – the answer may actually be quite simple. First, you need to change the question. What are you trying to do?

1. Home computing: desktops and laptops

In the home we have traditionally used desktop PCs. Now they're being challenged by laptops and tablets. Monitors for desktop PCs range up to 27 inches. Some people have two or even three monitors connected to their PC. If you do a lot of typing – email and letters – you'll probably find it best to stay with a desktop computer. Pop-up keyboard screens on tablets are not good for prolonged typing. Dictation is supposedly the way of the future, but some people are uncomfortable with dictation, especially for longer letters and articles.

Charles Wright's column in *The Age Green Guide* periodically lists the cost of a workhorse PC. But you may not need the latest and greatest. There is usually a range of quite inexpensive systems available. Melb PC Online SIG members can point out great bargains.

One drawback of desktops is that they're not portable. Laptops overcome that problem, but they are also much easier to steal. And, if you travel with a laptop, it can be surprisingly easy to forget to pick it up after passing through airport security.

If considering a laptop, you need to check that the weight and screen size (10 to 15 inches) suit you. You also need to check that the inbuilt keyboard is comfortable to use, and whether you can

attach another monitor, mouse or keyboard if required.

Some people with arthritis find it easier to use the slide pad on a laptop than a conventional mouse. You can get trackballs or touch pads to replace a mouse on a desktop PC.

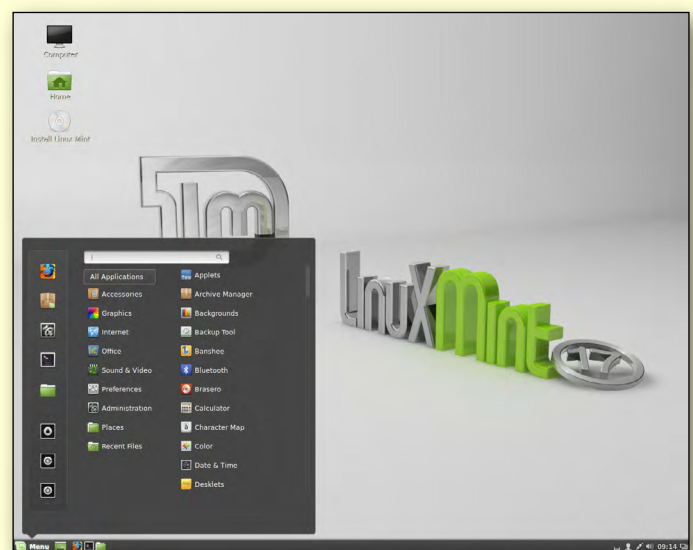
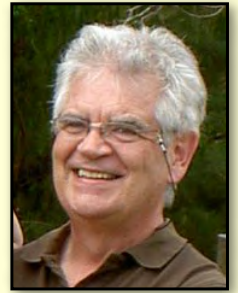
2. Operating System

Most PC users have Microsoft Windows. Microsoft recently ended support for Windows XP and have instituted a subscription payment for Microsoft Office. Because of increasing costs, some users are considering using Linux as an alternative OS. There is a bewildering array of Linux distributions (distros) available; for home use Linux Mint or Xubuntu are good choices. They are as easy to install as Windows (perhaps even easier) and come complete with commonly used software (office suite, email, browsers etc).

You can try a Linux distro on an existing Windows system by loading a DVD. Computer magazines with attached DVDs will usually have one or more Linux distros; alternatively, you can download the distro and burn the DVD. Melb PC Online SIG members are happy to help you through this process. Once you've tried it, Linux can also be installed alongside Windows, giving you the option of using either system.

If you've used Apple computers in the past, or perhaps if you have an iPad or iPhone, Apple is a viable alternative. Apple systems tend to be more expensive than other desktops, but their customer service is excellent. *[Ed: see sidebar on the following page for more on this prickly topic! –KS]* Note that iPads and iPhones do work with other desktop systems.

[continued...]



LinuxMint

[...continued]

3. Internet connection

Most of us have ADSL modems connected to the telephone system, while others have either Telstra or Optus cable. The contract with your ISP specifies a certain data amount (upload/download) that you can use over a period – usually a month. (Uploading is when you copy data to the server, e.g. a file to a cloud server, downloading is when you copy data to your computer, or in any way access or view files stored on a cloud server.) These days most ADSL/cable modems will have wireless capability. That means you can use a tablet or smartphone within wireless range of the modem without paying any more for uploading/downloading data.

Some laptops connect to the Internet through a 3G/4G dongle. That is a device that uses your Telecommunications Company's mobile phone network. Once again there will be a data allowance included in the contract. However, the cost per megabyte is generally much higher than ADSL/cable rates and it can be very expensive to purchase additional data if you've exceeded your monthly limit. In some cases disproportionately large penalty changes can apply, even if the excess data usage was inadvertent.

4. Tablets and phablets

A tablet is a small computer, usually without an attached keyboard or mouse. The best known tablet is probably the Apple iPad, but there is a wide variety of other tablets available.

Android is a Google implementation of the Linux Operating System; Samsung, Galaxy, ACER and other manufacturers use Android. Microsoft has a range of Surface tablets, some with keyboards.

Programs running on tablets are commonly called apps (short for applications). For quite a while Apple

had more apps than the other manufacturers. These days there are more Android apps than Apple apps with Microsoft a distant third. Of course, quantity is not necessarily an indicator of quality.

Tablet screen sizes range from around 7-11 inches. Things to consider when buying a tablet include weight and screen size. Phone screens are getting larger, up to four inches, and there is now a range of devices with screen sizes of four to seven inches (phablets).

All tablets and phablets have Wi-Fi connectivity; some also have 3G/4G SIM cards. Wi-Fi enables you to use the tablet within range of your ADSL/cable modem without incurring additional data charges.

The compact design of tablets make them ideal for use where a conventional computer or laptop is

Are Macs more expensive than PCs?

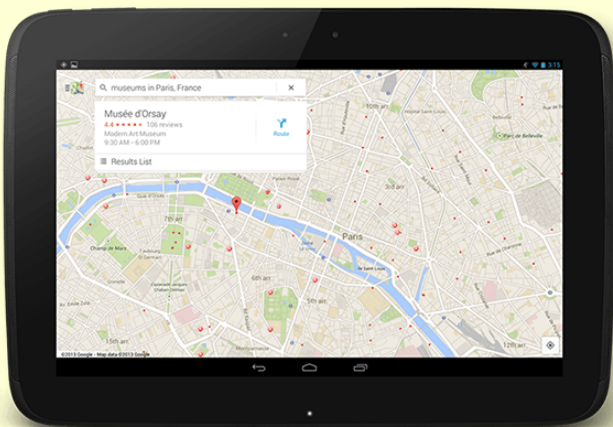
Yes – and no.

For machines with similar specifications, both hardware and software: no. The differences which still lead to this common perception are usually because people are not comparing apples to <cough> apples.

The main differences are:

- Apple offers few mid-range and no low-end computers, so the \$500 PCs have no direct Apple comparison as they are much lower spec computers.
- Macs aren't as upgradeable/modifiable as PCs. It's very easy to add or upgrade a PC's graphics card, hard drives, RAM etc; less so with an Apple.
- Macs come with standard software, which are bundled into the total purchase cost. PCs usually come fairly bare-boned usually with more trial software than commercial software pre-installed, so that purchasing the software is generally additional to the purchase price.
- Reputation: Apple computers have a reputation for uniformly high quality products and customer service.
- PCs come from a variety of sources, so their quality and customer service is similarly wide-ranging.

Katharine Shade

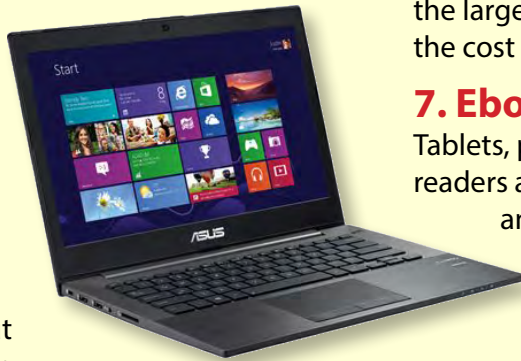


Google maps for Android

not practicable – on holiday, in hospital, on public transport etc.

5. Netbooks, ultrabooks and notebooks

Netbooks like the Asus EEE-pc are being replaced by lightweight ultrabooks and notebooks. These are similar to laptops, but usually smaller, and often without a DVD drive and with limited ports, which keeps their weight down but keeps most of the functionality of a desktop computer, as well as a longer battery life than a laptop. For example, the ASUS Zenbook, Chromebook, Apple Macbook Air.



ASUS ultrabook

6. Phones

a. Landline

It's now possible to do without a landline phone. This is not recommended for "older" people because the location of a VoIP or mobile phone is not automatically available to 000 operators, which could lead to a delayed response to an emergency call, and (unpowered) landline phones continue to operate in a power blackout.

b. VoIP

Voice Over Internet Protocol (VoIP) is available with "naked" (i.e. no telephone service) ADSL or cable. VoIP calls are often cheaper than landline calls.

c. Mobile

You can still get mobile phones without too many fancy features. Some of these, with larger keys, are targeted at an older market.

d. Smartphones

A smartphone is a mobile phone with Internet capability. Most phones these days are smartphones and include the Apple iPhone, Samsung Galaxy and Windows Phone.

The comments about tablets and phablets also apply to smartphones. Charges for excess data use on 3G/4G networks can be significant. To minimise charges it's usually best to ensure that a smartphone only uses Wi-Fi whenever possible. All phones have an indicator showing what service is being used at the time.

Smartphones can also be set up as Wi-Fi hotspots

so that you can use a Wi-Fi tablet to connect to the web through the phone. This gives the advantage of the larger screen size of the tablet, balanced against the cost of 3G/4G data usage.

7. Ebook readers

Tablets, phablets and smartphones have ebook readers available. However, they have backlit screens and may strain the eyes more than a dedicated e-ink reader such as the Kindle, Kobo or Nook.

8. Music, radio, languages

All devices have the ability to play MP3s but some people prefer dedicated MP3 players as they can be physically smaller with longer battery life.

9. Cameras

Most devices include cameras but serious photographers usually prefer single purpose cameras.

10. GPS and location services

These are also included in most smartphones. Remember that the mobile phone rules apply when they are being used a GPS device while driving in Victoria, i.e. they need to be secured in a cradle fixed to the vehicle, or operated without touching any part of the phone (hands-free or Bluetooth).

11. Conclusion

Prices and specifications are constantly changing, so do some research before buying. And if you're uncertain, get advice. Melb PC Online SIG is a good source for advice. And with prices as low as they are at present it's worth considering having several devices to fulfill all your computing needs. ☺

Also see *"Useful Definitions: From Phone to Tablet"* [PC Update March 2014](#) pages 20-22 for more information.



Osborne 1 – the first portable computer.

My Life With Computers (Modern Times)

By Karol Doktor

I love computers.

Inanimate objects, without conscience or ill will, entirely under our control.

In fact, I have loved computers all my life. Now a microprocessor the size of a fingernail located in each of the side mirrors of my car probably has more processing power than the huge computers I worked on 50 years ago. Not to mention the processors performing hands-off-wheel parallel parking.

For me, the modern era started 30 years ago with a PC compatible. I still have it in my garage in original 1m³ box with a 14" CRT monitor and a 10 MB(!) hard drive. It cost me as much as my brand new Ford Cortina Ghia bought two years earlier, but unlike the car, it was a business expense. I used it for close to 10 years. Then I had a 286, which I was not happy with, and a 386 running Windows 3.11 and Windows 95, which I was very happy with.

At that time I was very much into video editing, so my next system (March 2000) had a Pentium III processor running at 550 MHz and close to 180 GB on four hard drives. I still have it on the floor but it has been powered off for some years now. I keep it because it has some hardware (Pinnacle DV-500) to convert analog VHS video to digital (DV) format

which, one day, might again be useful. Sadly, it is failing now; it lost its mouse port.

The next system (December 2003) is still running Windows XP and is powered 24/7. It is the only machine connected to the Internet and it is in constant use. *[Ed: see sidebar re XP on the following page –KS]*

In the meantime it had some elements replaced – the fans on the graphics cards failed after about four years, so now it has a card with passive cooling. It is also on a second system drive (40 GB) that has clocked well over 60,000 hours (close to seven years). Other drives are scraps from here and there.

Then, I have a multimedia system (Oct 2010) and a modern “production” system (March 2012), both running Windows 7. Theoretically they are only powered when needed, but usually they are on.

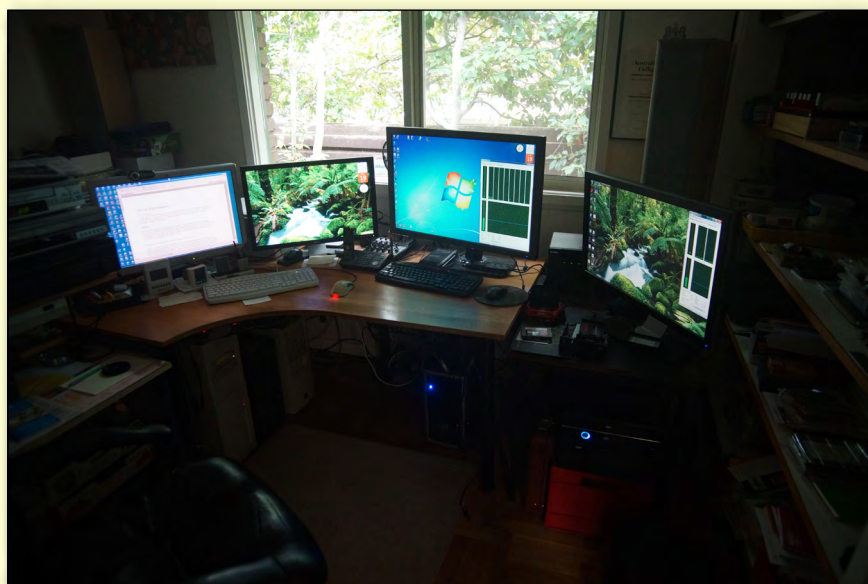
The biggest revolution, however, lies elsewhere.

Internet

A word of warning. Below are described procedures that I use when dealing with Internet, some of them are unorthodox. Please use your own judgement before adopting or adapting any of them.

The Internet brought a major shift – it put a gigantic information resource and communications medium into the hands of normal citizens. It does that with great efficiency and speed. Imagine that a microbe mutated and developed a liking for fibre-optic strands and the NBN went dark. In the modern world that would create chaos.

Being an older person I have a different perspective on this revolution than the younger generation. For me a friend is a person I can ask for help when I have problems, not somebody on Facebook that I have never met. Also, I don't use Twitter because news



of any important changes in my friends' lives I learn from a personal email or a telephone call. I don't understand why people might be so narcissistic that they would tweet about what they had for lunch and who with.

Having said that, I do have Facebook, LinkedIn and Google+ accounts where only my name and city of residence are listed. In all these years I have only been contacted by two people who otherwise would have had problems finding me.

I have accepted a few invitations to "connect" on LinkedIn and as a result I get an email message every time they connect with somebody else. Some of these people I know because I was working with them, but I don't see a reason why everybody else should know that.

[Ed. It may not solve this particular issue, but the following article can help turn off a lot of LinkedIn's annoying notifications:

<http://lifesacker.com/how-to-fix-linkedins-biggest-annoyances-1567460670/all> –KS]

With time I have developed a few procedures that I use when dealing with the Internet. Mind you, that is still work in progress.

Firstly, I decided to use a few separate identities. Your email address is often used as an identifier, so I use several different email accounts (some of them free). Most of the websites you visit leave a so-called "cookie" in your browser, a small record that is sent to them automatically on any subsequent visit. To reduce amount of "cross-talk" I also try to use different browsers but it is difficult to do that consistently. It is however mandatory to use separate accounts for personal and business purposes and if another family member uses the same computer.

Just for clarity let me list all identities that I find useful.

1. Personal – for all your friends and family.
2. Banks, credit cards, legal.
3. Business – if you are engaged in any commercial activity.
4. Casual – Skype, newsletters, how-to sites, TED and any other sites you care about.
5. Shopping – for all your internet purchases.
6. Spam – sites you don't care about but which asked you to open an account.

I used to have separate pieces of paper to record each of these identities but an Excel spreadsheet or other document might be more convenient.

These are detailed records of identities containing purpose, alias (each different), DOB, recovery email address and any answer to encountered security questions.

[Ed: password protection on a document like this is recommended. –KS]

Then, I have an old-fashioned (paper) address book. It includes relevant details of every account created. That includes the URL, identity under which it was created and password. I try to avoid electronic records of this type to reduce risks in case the system gets hacked. On unimportant accounts I use browser facilities to remember passwords, but never for banks or similar.

The important thing is that sites that you suspect don't have top security (types 4-6 above) get fake names and date of birth. If any of these sites gets hacked at least your banking details should be safe. For Skype and shopping I use my name slightly misspelled because I want my friends and the postman to still recognise me. Only banks know my actual date of birth, however.

If you want Facebook to send you a Happy Birthday message on the right date then at least give them a fake year!

[continued...]

Windows XP and the Internet

Katharine Shade: Running Windows XP while connected to the Internet is considered unsafe, and as Karol has some specific requirements, I asked Melb PC member Dennis Parsons for suggestions.

Dennis Parsons: Karol may not be aware he can use ZoneAlarm rather than the default Windows firewall on Win 7. I'm not a ZA user so I downloaded the current version (13.3.209), installed it on Win 7 and adjusted the firewall settings to high, which seemed to have the desired effect as a pop-up appeared when the anti-virus and other programs tried to update.

I'd strongly suggest he gives it a try as moving away from Win XP is a necessity for online use. Presumably ZA provides the same functionality for Win 7 as for Win XP, but if not I'd note there are other third party firewall programs that provide similar functionality.

[...continued]

Backups

With so much day-to-day life dependent on computers, we need to take care of all our personal stuff. All my desktop computers are networked and have more than one hard drive. I have removed the My Documents folder out of the System drive to another (Data) drive.

I do have backups of system drives and I refresh them before any major change (using Ghost or Acronis). This does not happen more often than twice a year.

The My Documents folder, where I try to keep all my personal data (including email), I back up much more frequently – at least monthly. These monthly backups go to one of the external drives and (in rotation) are kept off-site.

I also extensively use NAS (Network Attached Storage). It is a device where a small computer is servicing several hard drives. The beauty is that it can be configured to write files in a redundant fashion so that if one of the drives fails, the data can be recovered.

I only use laptops while travelling, to back up my camera photos and for Skype and email. They are practically never backed up. Neither are my tablets or phones (except the contact list).

Computer Room

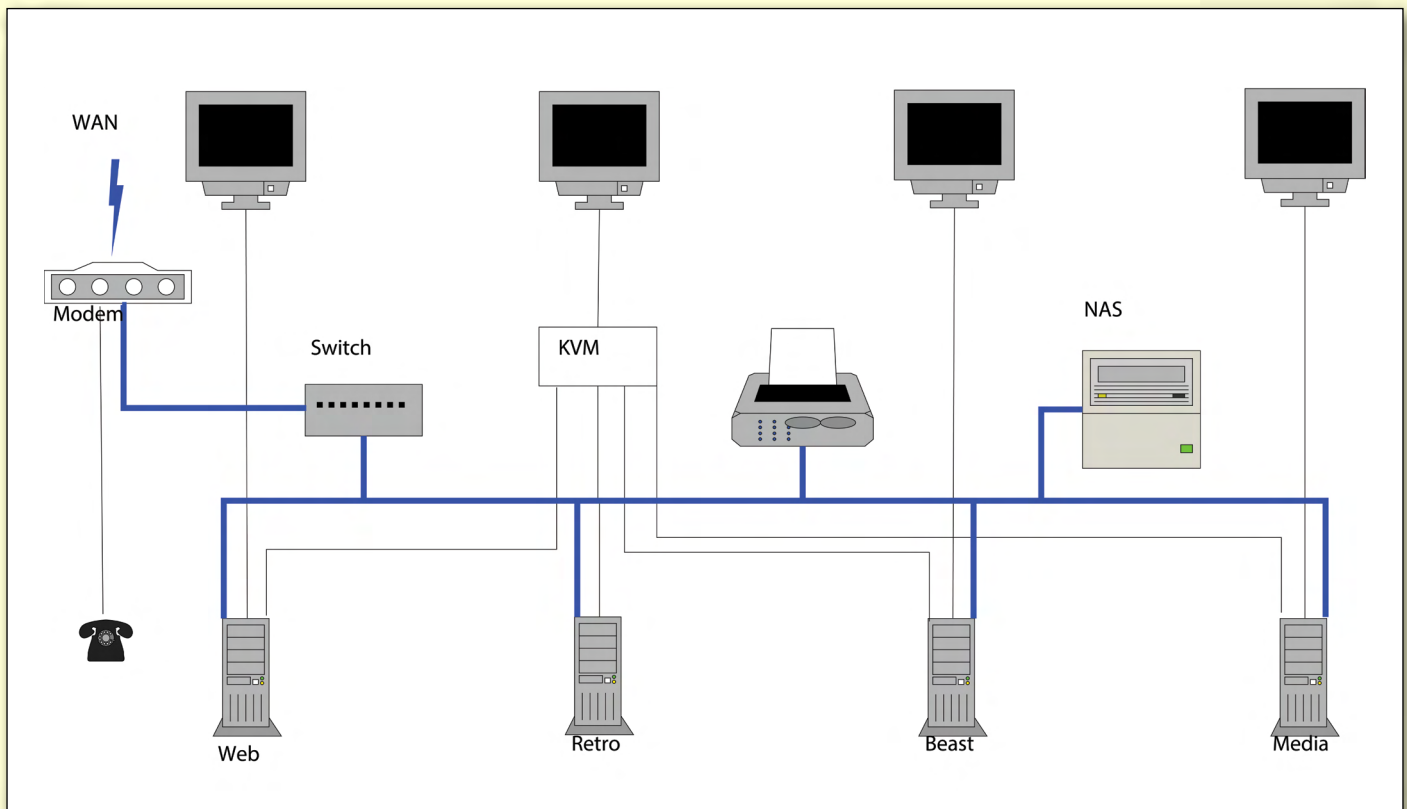
I still like to experiment with computers, but for that I extensively use virtual machines. This way when something goes wrong I delete the mangled remains and create a new one. Recently I updated Skype to the most recent version on my Web (XP) system. Unfortunately it was dead-on-arrival and I had to use my six-month-old System drive backup to put things back in order. A similar incident on a virtual machine would have been much less of an inconvenience.

I would have upgraded my Web system to Windows 7 but I have not been able to configure Windows Defender or Firewall to warn me when an application wants to send some data out.

For example, VideoReDo (a commercial application that I use daily) sends to its “mother ship” details of what it has been working on every time it runs. Under XP and ZoneAlarm I get a pop-up message and may or may not let it out.

As I don't like to be spied on I stop this transmission. I'm not able to replicate this sequence under Win 7.

For sound I use a \$50 Dick Smith power amplifier kit that I soldered years back but with a pair of proper speakers, controlled through a 4-port Behringer sound mixer.



Most of the systems in use have individual HDMI/DVI monitors, but their motherboards' VGA outputs together with keyboard and mouse are run through a 4-way KVM (keyboard-video-mouse) switch to a single monitor, keyboard and mouse.

The "production" system has its own keyboard and mouse.

My wife and I use a two-line cordless telephone system (Panasonic) with two handsets. One of the input lines is connected directly to the filter on the residential phone line and the other to the VoIP port on the broadband modem. This way we receive calls on our 30-year-old POTS (plain old telephone service) number on one line but make calls on the other (VoIP) line, with overseas calls costing only cents per minute.

The Future

Is there a limit to progress? Certainly not!

I have been involved with computers almost from day one. Fifty years ago they were the measure of

progress. Now, they have grown in a complexity that practically no single individual can comprehend. In many cases even large companies have problems mastering these complexities.

We are using machines that we are required to trust. We cannot independently verify that they do what we expect them to do. I'm talking about software because we still control what hardware peripherals are connected to it. Although this border is being slowly eroded too, with Internet connected climate control systems (<https://nest.com/blog/>) and the whole IoT (Internet of Things) business.

Procedures described above are my defences from unethical use of computers and the Internet.

I used to be a master in control, now I'm in deep defence. Do I like it? Certainly not but I don't despair.

As mentioned earlier, out of all my networked machines only one is connected to the Internet. All the others are blocked on my broadband modem by an "Ethernet Client Filter". This, however, leads to serious complications, which is a whole other article that we'll leave for some future time. ⏻

BREAKING NEWS – Our Melb PC Online SIG

Our technical experts got their heads together over several requests for help with extending the reach of Wi-Fi networks within several members' homes. Over several days settings were discussed as well as the placement and type of modems and the advisability of using of Wi-Fi extenders.

Computer questions are asked and puzzlements are solved at all hours (24/7) by the Online SIG (Newsgroups) community.

One kind Online group contributor regularly scans the Internet to give us his tips for all sorts of very well-priced computer related products. From desktop computers to notebooks and software, he posts his valued tips.

Thank you DAVE!

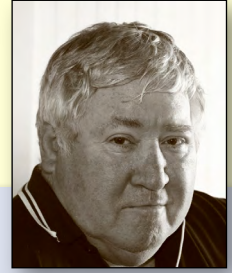
You can get the tips too if you read the Online SIG (Newsgroups).

We have fourteen groups within our Online SIG, each with a different emphasis. You can read some of the conversations by logging into <http://forum.melbpc.org.au/newsforum> with your Melb PC username and password. When you are ready to start a topic, join a conversation or ask for help, you can set up a news-reader utility on your computer, e.g. Thunderbird. We will help you with this. Here's the place to start:

<http://www.melbpc.org.au/faq/newsgroups.htm>



A Secure Password



Past editor of *PC Update* GARY TAIG explains a method of creating a password that hackers would never crack

The outcome of this exercise creates a password that is virtually *uncrackable*. Believe it or not the method is relatively simple and straightforward. However, your password may or may not be stored securely, and that is an entirely separate issue. The website that stores our passwords exactly as we typed them won't be secure at all, certainly not as secure as it should be and there is nothing we can do about that part of it. Where a website stores a hash value, a special number generated from our password, that's a more secure option but there is much better security available to us.

To make a password that's uncrackable you avoid all words from the dictionary, all names, all combinations of words and names, and any other common notation including dates, times and so on. You might ask, what is there remaining to use if we exclude all those things? True, until I teach you this method you have a right to be slightly puzzled but believe me, once you grasp this idea you will be possessed. I didn't get this idea, this idea got me a long time ago.

This article does not discuss the programs and systems we have available for storing our passwords, freeing us of the task of remembering them. Having to remember a password is a task we all encounter, irrespective of the complexity. Those systems use a master password which we enter once per session; they remember and submit all passwords for us. You can still use those; they have no effect whatsoever on our current discussion.

Cracking passwords

Cracking a password is simply guessing (or calculating) it. Cracking passwords is never done by hand, unless of course it's a casual activity performed by someone who knows you well and knows the variety of words you would always use, and they sit at the keyboard testing every combination they can think of. There is no security in that situation, such

a password has almost no value whatsoever. The cracking of a password involves very heavy computing power working on a task over many hours, days, weeks, even years if it were sufficiently important.

How do they crack passwords?

Let us invent an average password. Say, "Scruffy6pm", meaning that provided all goes well you'll be seeing Scruffy your pet dog when you arrive home each evening at around 6pm. Some people would be proud of such a combination, yes, who on earth could guess that? You'd be surprised. A computer can run through a data file of names in seconds and as soon as it finds "Scruffy" in the pet names file, bingo! your password is cracked.

A computer-driven cracker can be programmed to check every combination of every word and date and time and name, in fact every combination of every word in several languages with every combination of name and date etc. Think of any combination of words and rest assured it could be checked by an intelligently designed computer program.

If I set out to design a program to crack passwords I'd begin by creating a huge set of data files. These would contain lists of first names, surnames (from all the phone books), place names, countries, states, cities, national and international landmarks, the English dictionary, and perhaps dictionaries from other languages, all dates in the calendar in a variety of formats, and on and on it would go. The assembly of this data would be a mammoth task; the little bit of programming involved to run searches would follow much later.

Creating a password

This is what I believe to be the very best method of creating a solid password.

Examine the following password. Soon I'll tell you how it was derived, but before we tackle that

A SECURE PASSWORD



remember this password is a sample only. In this article I'm teaching you not just my method, but also a way by which you can derive or design your own method of password creation.

Here is a 20 character sample:

`$1tyh1wdbbwtttrtp1a$0`

That password would far exceed the requirements and/or recommendations of most access situations. As we covered earlier, your only real concern would be the password storage adopted by the web designer. Banks and other financial institutions will have more complex protection in place. In really critical access situations, especially these days where there is likely to be additional security activity, passwords are but one part of a serious authorisation process.

Let's look at where we obtained this sample password; here's my rule. *The best password is derived from a regular sentence or string of words that no person or machine could possibly guess.* Also, the longer the password the better.

Just a few lines back I wrote, "Examine the password below;" and followed that with a sentence beginning with the words "Soon I'll tell you..."

Type the first letter of each of the 20 words in that "Soon I'll tell you..." sentence and you get

`Sityhiwdbbwtttrtpiaso`

The password we have developed so far is quite solid, but you can do the following:

- Change every "i" to "1",
- Change every "o" to zero,
- Change every "s" to a dollar sign.
- (Include capitals of course)

The end result is

`$1tyh1wdbbwtttrtp1a$0`

Generally I replace U with an underscore, so that the words "boat under the bridge" embedded within a sentence would finish up as "b_tb"

You should also substitute:

- Replace every "k" with the caret sign ^
- Replace every "h" with the hash sign #
- replace every "a" with the strudel @

Why the changes? By doing that you are adding yet another simple but effective layer to the level of

complexity. Typing your password and substituting characters as you go is an easy habit to learn. It takes very little effort and with practice you'll be amazed at how easy it is to remember your chosen sentence. There is no chance that a human or a fast computer will ever guess your password.

Other considerations

There are other rules too, that must be obeyed. The next rule is never share your password or the precise method you devised for creating it with anyone. That means with no living person, except of course in circumstances within your direct family; every individual takes responsibility for the management and access to their own personal data. The sharing of data within family is beyond the scope of this article. The general rule is, keep it close to your chest.

Password length

Be aware too that 20 characters just happens to be the length of that sample sentence. Obviously one must pick a suitable sentence and one of appropriate length, but once you have chosen a sentence, write it down or type it somewhere so that you won't forget it. After a while you won't need to refer to the written sentence, it will come to you automatically. I still keep mine written down though, all of them, just in case, but they're on a computer with no Internet access.

Usually 12-15 words would be quite sufficient. In low-security situations there is no real danger; who would want to crack your password for any reason other than to be nasty? On the other hand sometimes (like at my bank), they wanted no more than six characters. Horrible people, they messed up my system, but I know it's likely to be very, very secure. Above that they will have levels of protection that you'd never imagine.

[continued...]

[...continued]

Avoid repetition

Avoid repeated use of the same password; make a new one for each situation. You might devise a standard sentence and change a few of the words for each web site. Whatever you do, keep it simple, be consistent and write them down; you will make life easy for yourself.

How a website handles your password

Some websites store our passwords, some don't. The most sensible and secure method for a website owner is to *hash* our password and store only the hash value, rather than storing our actual password. When we log in, the website software *hashes* the password we type and compares it with the stored hash so that our password is never actually stored.

Further security is obtained when a cleverly designed website uses what is known as a *seed* or a *salt*. That is yet another value and may be unique to you, it can be long or short, simple or complex, and is appended (prefixed and/or suffixed) to your entered password before being hashed and the result compared with a hash value stored somewhere on the site. The salt could be anything but it's known only to the website designer and operators. Cracking that site entry would be unlikely because whatever the password, the website alters it before checking it.

When a newly created hash matches a stored

hash value, the website is able to conclude that we entered the correct password. If they don't match, then we might be either an intruder or a clumsy typist. After three or four attempts they might ask us to come back in 15 minutes. Of course, only the banks and other financial institutions are likely to go to all this trouble over access, but anyone can and most should do it.

So, with that level of security in place, our little password is but a small part of the overall security, and website designers must attack this problem with an intensity that befits the situation. However, we can help the situation by avoiding the usual run-of-the-mill passwords.

The time element

One important point to consider is that when a cracker program runs with a big task it will take time, heaps of time. In fact even the most powerful of personal computers might never complete such a task in our lifetime. With many files to scan and compare, no matter how fast or powerful it might be, a computer still encounters the element of time.

Another important consideration of website security is the number of attempts. An intelligently designed password protection system will allow only a few attempts after which it will reject any further attempts for a few minutes. Nobody can get past such security, regardless of the password. 🔒



Learning Python: Code on Raspberry Pi



By **Lance Lloyd**

Coding in a programming language is important if you really want to get the most out of your RasPi.

Scratch

Scratch is a visual programming tool with a drag-and-drop interface. It enables you to create computer games, interactive stories and animations, without actually having to write code. As such, it allows younger folk to get started with programming and get early results.



See www.raspberrypi.org/learning/getting-started-with-scratch/

Sonic Pi 2

Sonic Pi 2 is a programming environment which is aimed at developing sounds for programs. It is also designed to explore and teach programming concepts through the process of creating sounds. See



www.raspberrypi.org/learning/sonic-pi-2-taster/ and www.cl.cam.ac.uk/projects/raspberrypi/sonicpi/ for useful resources.

Basic256

You may remember Basic from the early days of computing. SIG member David Hatton's Raspberry Pi has the Basic256 program successfully installed and it is working well.

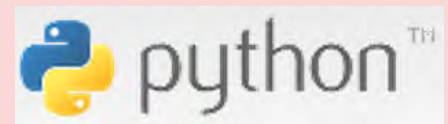


Basic-256

He tells us that it is version 0.9.6.69a-1, and is listed in the raspbian repository. You can install it in the normal way by either using synaptic or just typing "apt-get install basic256" at the command line.

Python

It is Python (www.python.org) where the RasPi comes into its own. Python is an easy-to-use yet powerful programming language whether you are a newbie or a long-time programmer.



Last year I reported on the Coursera online class completed by Dave Botherway and I, run by Rice University.

The class was an excellent way to learn the skills needed to actually create fully functioning games.

Well it's on again, with a new course starting in mid-September and you can sign up at www.coursera.org/course/interactivepython if you are interested, and can spare 8-10 hours per week to watch the lectures online, undertake the weekly exams and create a weekly project.

The weekly projects are great as they start off being easy and increase in complexity as the course goes on, until eventually you create a fully functioning game called RiceRocks (where you control a spaceship and shoot down asteroids!).

I can heartily recommend this course, and even if you don't get it all done one week, you can catch up the next.

If you don't have time for that, there are quite a few resources available for online learning, most of which are free, some of which are self-directed. Have a look at the list on the following page.

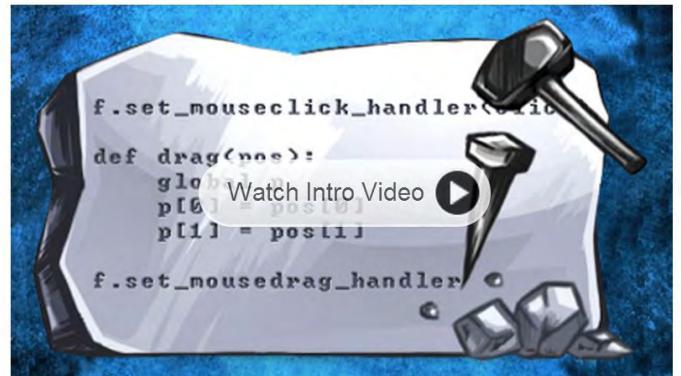
[continued...]

[...continued]

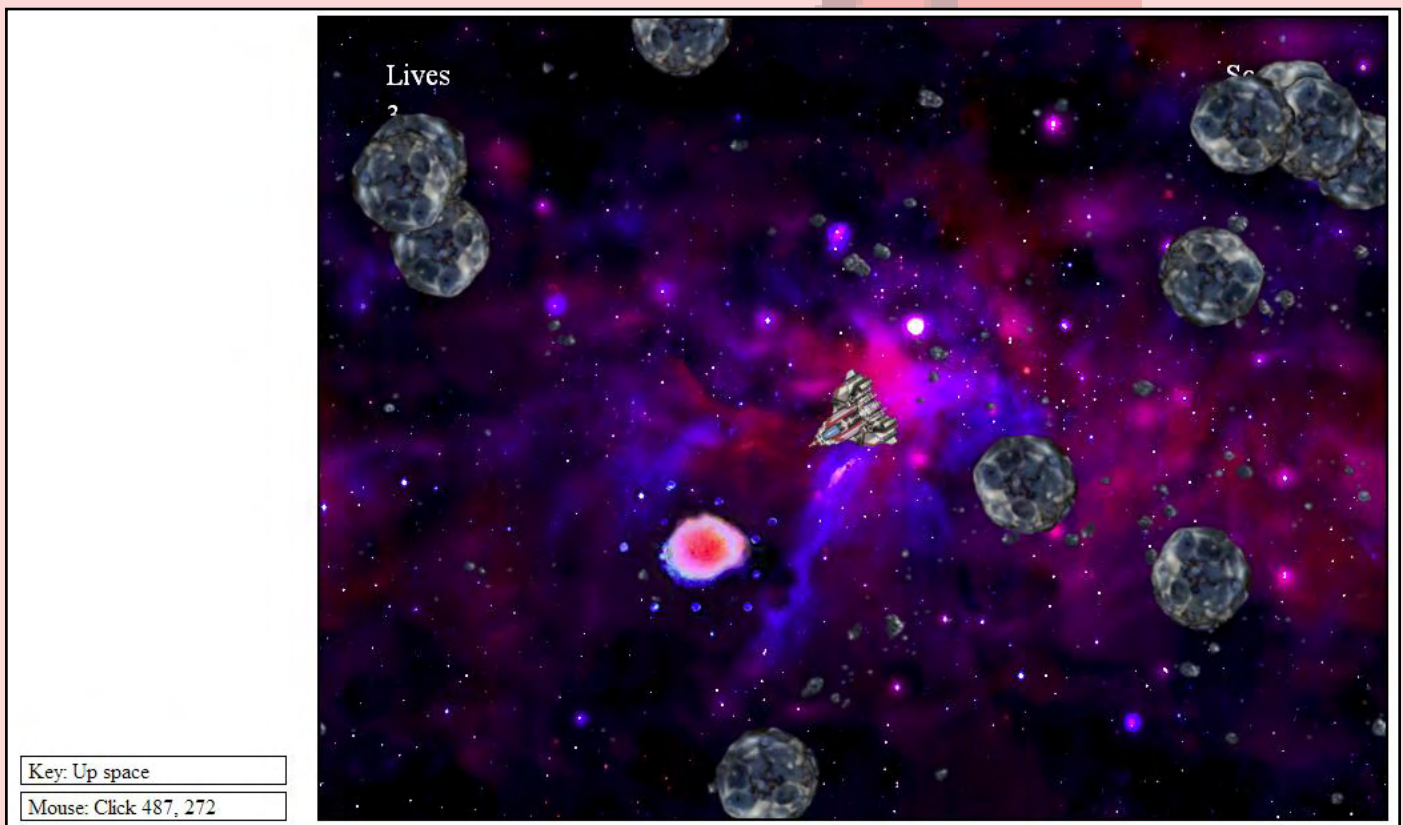


An Introduction to Interactive Programming in Python

Part of the "Fundamentals of Computing" Specialization »



COURSE NAME	URL
An Introduction to Interactive Programming in Python	www.coursera.org/course/interactivepython
Programming for Everybody (Python)	www.coursera.org/course/pythonlearn
Google's Python Class	https://developers.google.com/edu/python/
Code Academy	www.codecademy.com/en/tracks/python
Learn Python	www.learnpython.org
Introduction to Programming 1 & 2 (GROK Learning)	https://groklearning.com
Online Python Tutor	http://pythontutor.com
Python Course	www.python-course.eu



RiceRocks

GEORGE SKARBEEK brings us answers to some curly questions.

Send your questions to george@melbpc.org.au



ULTRABOOK WITHOUT A DVD DRIVE

For travelling I am considering purchasing an Ultrabook as it is light, fast, can receive mail and has an SD card for backing up photos – but no DVD. The salesman said that DVD drives are becoming redundant as all essential software is installed and new software can be downloaded. Do I really need a DVD drive?

In my opinion, this is a borderline case. I agree that optical drives are starting to become redundant, but not fully redundant. However, in my opinion you generally do not need to have a DVD reader.

A few exceptions are:

- To boot on a rescue DVD where there is no alternative to fix a serious problem, Windows booting issues or a bad virus infection.
- When you have to install some older software that you have on a CD/DVD.
- Copying some favourite movies or music to take on your trip.
- If you wish to burn a DVD with photos or movies of your trip.

Fortunately, in almost all case the older software can be copied to a USB and installed from the USB. The same for movies and music.

If you have to use a rescue CD then it can be put onto a bootable USB and you boot from a USB and not a CD. This step requires some technical knowledge but not too much if you have detailed instructions on how to do this from a computer that has an optical drive.

Finally, if something happens when you are travelling, you can always purchase an external DVD drive for under \$40 or even a Blu-ray drive for under \$100.

TRANSPLANTING OUTLOOK EMAIL ADDRESSES

I have purchased a new Windows 8 computer and have imported all my mail into Outlook 2013, but no contacts have come across. On the old computer, when I start typing a couple of letters of the email the mail would appear but this is not happening on the new computer. Is this due to the fact that I am running Windows 8 or Office 2013?

Outlook uses something called Autocomplete to search through the existing names in the email messages that you were sending to find a match and help in the filling in of the email address. Generally this is not transferable to a new computer but there is a moderate chance.

You have to search your old computer for a file ending in .NK2 and probably called Outlook.NK2.

For Outlook 2003/2007 with Windows 7, the location of the nk2 file most likely is C:\Users\Your name\AppData\Roaming\Microsoft\Outlook. This is usually a hidden folder.

By copying it via a USB to C:\Users\Your name\Documents\Outlook Files on the new Windows 8 computer, the names may appear when copied to the same location on the computer.

If this fails then you can create a list of contacts on the old computer by opening Outlook and right-clicking on the person's email and selecting Add to Contacts, then repeat for each person. Then this file can be exported via File, Export and imported to the new computer.

[continued...]

[...continued]

USB LIFESPAN

How long does a USB drive last? I have some that are over five years old. Should these be replaced?

To my knowledge, no media lasts forever. USB drives do wear out but statistics vary. USB drives use a low-cost flash memory that allows data to be written and then retained after power is switched off. The number of write cycles varies depending on the type of memory technology used and can range between 5000 to over 100,000 cycles.

As for your five-year-old USB, if you write to

it only very occasionally, say once every two weeks, it should last for some decades. Constant updating, say, several times per day, will significantly shorten the life span.

USB drives are becoming quite cheap and I have seen 16 GB drives advertised for under \$13, and even a 16 GB drive on special for \$2. My suggestion is that you purchase a larger drive so that you will generally not be erasing and writing over that same part of memory. Doing this will tend to level out the wear-and-tear and extend the life of the USB. For very important data, such as irreplaceable photos, I strongly suggest that you use at least two USB drives. ☺

FREE MEMBER AD WANTED

Old laptop. Must be very slow around 266mhz- 400mhz, but not over 933mhz.
Should be complete and working.
I think these were released around 1985-2000.
Please call Roman on 0400 767 594.

BREAKING NEWS – Our Melb PC Online SIG

A question was asked regarding the replacement of "an Android, 4G-competent, affordable mobile phone". Along the way our experts offered valuable information about the specifications of the various "smart" phones, as well as the capabilities of the networks offered by the various telcos. You can find here a most useful primer of amongst other things the 4G, 3G and next G frequencies.

Online SIG (Newsgroups) members had the answers.

On the home front. How do you cope with possums in your garden? We discussed the tricky issues of deterring hungry possums from destroying our garden shrubs and trees. We also assisted with a member's quest to purchase a condenser clothes dryer, then moved onto to suggestions for removing cling-wrap from home delivered newspapers.

You have the problems – we have lots of solutions in the Online SIG (Newsgroups) at all hours 24/7

We have fourteen groups within our Online SIG, each with a different emphasis. You can read some of the conversations by logging into <http://forum.melbpc.org.au/newsforum> with your Melb PC username and password. When you are ready to start a topic, join a conversation or ask for help, you can set up a news-reader utility on your computer, e.g. Thunderbird. We will help you with this. Here's the place to start:

<http://www.melbpc.org.au/faq/newsgroups.htm>



LOCAL/GENERAL AND SPECIAL INTEREST GROUPS

Introduction

Groups of members with specific interests meet regularly to discuss and indulge their diverse interests. There are also local groups which cover more general topics. Often you will see presentations by visiting experts on a wide range of subjects.

This is where Melb PC membership really pays off. Enhance your computer knowledge and widen your circle of friends to include other members who have similar interests and, very often, similar

problems to solve. All members are most welcome.

This is part of your Melb PC membership, so feel free to contact any of the conveners listed here. Ask them about future meetings; ask them about the format of their meetings and anything else you need in order to get started.

Many of the groups have their own web page – follow the links from here: <http://groups.melbpc.org.au>

IS THERE A GROUP NEAR YOU?

Any suburb

Online SIG (was Anywhere,
Any-time – Newsgroups)
iHelp

Avondale Heights

Essendon

Ballarat

Ballarat

Balwyn

Video Inner East

Brighton

Bayside

Gisborne

Macedon Ranges

Hoppers Crossing

Wyndham

Wyndham Multimedia

Ivanhoe

North East Genealogy
North East Daytime
North East Photography/
Digital Imaging
North East Android
North East

Montrose

Yarra Ranges
Yarra Ranges Workshop

Mount Waverley

East Workshop
Multimedia
Hardware
Digital Photography
Raspberry Pi

Mornington

Mornington Peninsula
Mornington Peninsula Digital
Imaging
Mornington Peninsula Family
History

Narre Warren

Casey
Casey Workshop

Sunbury

Sunbury
Sunbury New Users,
Maintenance, Linux

Watsonia

Northern Suburbs Linux

Vermont South

Beast (Beginners East)
Geneast (Genealogy East)
East
East Workshop

Moorabbin (Melb PC Headquarters)

Access (Database) and Excel
Communications
E-Book
Everything Apple
Everything iPad
Graphics/Animation
Hardware Workshop

Lan-slide Gaming
Linux & Open Source
Linux & Open Source
Workshop
MACE
Microcontroller
Microcontroller Workshop

Music
Programming
Sony Video Production
WASINT (Web & Software
Investment Tools)
Website Design
Windows 7&8

WHAT'S ON THIS WEEK?
Check the calendar on [Page 44](#).

Access and Excel

by Craig Evans

During our meeting we discussed:

- Access: Setting page size to print on DL and DLX
- Access: How to force users to follow a pattern of letters and numbers when entering data.
- Access / Excel: What is revealed by the function Environ().
- Access: Simple code to ensure reports are filtered or not.
- Excel: Using the mouse buttons and code to change values in a cell between TRUE and

FALSE or empty the cell.

- Access: Form features – the purpose of the sidebar, some properties, communicating to users that data entry is complete.

Our meetings are usually Q&A. Occasionally we have a demonstration of database or spreadsheet magic.

A detailed explanation of the topics above is available on our web page at: <http://groups.melbpc.org.au/~access/sigtxt/SIGJUN13.htm>

Beast (Beginners East)

by Jean de Neef

July 2014

Recent Acquisitions

Purchases in the preceding month included a 24-inch monitor and a wireless “all in one” media keyboard. The latter on the shelf at Officeworks was \$59.95, but they met (and bettered by 5 per cent) a competitor’s price of \$36!

Members were cautioned to be wary of non-recognised brands of items they buy (especially battery chargers), after the death of a person using a mobile phone while charging via a non-AU-certified power supply.

Q&A

For those using Windows 8, a new version of Acronis is required – obtainable direct from <http://ugr.com/> for \$25 as a download or \$25 plus \$5 postage for a CD. Members can use the promotion code “Melbpc” to receive the \$25 deal.

For unsolicited email, it is good practice to hover the mouse over any URL links or zip files etc. to see the real content. It is strongly recommended that members do not click on embedded links in email messages, but instead get into the habit of typing the link as shown into your browser. *[Ed: Best practise for unsolicited emails with links is to delete them –KS]*

If members receive “warning emails” to pass onto others, it is best to first check if it is an old hoax being recirculated by querying it at <http://www.snopes.com>.

How to minimise annoying ads while using Firefox: use Adblock (available as a add-on for Firefox: <https://addons.mozilla.org/en-US/firefox/addon/adblock-plus/> or Chrome:

<https://chrome.google.com/webstore/detail/adblock/ghghmmpioibklfepjocnamgkbbiglidom?hl=en> – a definite advantage when reading newspapers online.

How can I extract content from a PDF document? Convert it into a Microsoft Word document (a native function within Office 2013) or use an online tool such as <https://www.pdfword.com/>.

I am having difficulty with the new Windows 8 menu screens: recommendation is to install the free Classic Shell (<http://www.classicshell.net>) that provides a start screen menu etc, making Windows more like Windows 7.

My eeePC has 1024x600 display – but Windows 8 apps need a minimum 1024x768: Search online for details on how to add a specific registry key to fool the OS into thinking it has deeper screen.

Can I do work while anti-virus software is running? When a PC is running, there can be more than 30 processes running concurrently (Task Manager will show these). Thus users can usually carry on with other tasks (e.g. editing a document) – possibly slowed down if the AV program is using excessive/competing resources.

Main presentation: Skype

The main topic was a follow-on presentation from the previous month’s topic (Communication Costs while Travelling).

Skype is an application running on both the caller and receiver’s PCs or mobile phones. Whereas usual phone calls are charged on a per-minute basis using the voice network, Skype avoids that charge by using the Internet to provide the linkage “free”. It does however add into the data usage for both

caller and receiver.

To minimise feedback and background noise, it is preferable that people use headsets, rather than using the built-in microphones.

Usually both parties would need to be running the Skype application – although methods are

available where Skype can do a local callout to a conventional phone of the receiver at local call costs.

Skype was recently taken over by Microsoft and is being integrated into Windows and Office systems – watch this space!

Geneast (Genealogy East)

by Faye Barkla

July 2014

This month's meeting was somewhat different in format to our previous meetings. Ron Harper had a variety of topics, some relating specifically to genealogy and others with a more general focus. Several old photos and slide shows of Melbourne were shown. These encompassed the early 1900s up until the 1970s, invoking such comments as "I had a car just like that" or "I remember that landmark well". It was interesting to look back at the Melbourne which would have been a familiar sight to our grandparents or great-grandparents.

(<https://www.youtube.com/watch?v=wuVH8dgKymU>)

We then looked at the Eastern Regional Libraries genealogy newsletter. ERL has a web page with helpful links to relevant resources. They publish two newsletters – a family history newsletter and a military history newsletter – which you can subscribe to for free. (<http://www.erl.vic.gov.au/main/page.php?m=113>)

This was followed by an interesting exercise in reading aloud entries from an Old Parish Register in the 18th Century. Three different entries documented significant events that had occurred within the parish. One was a fire that had destroyed several buildings, another was a violent hail storm and the last was a treatment plan for rabid dog bite, which caused some laughter and much sympathy for the victims.

Brian's Brickwalls & Breakthroughs

A member recently requested a list of family history questions that would be suitable to ask an elderly relative. Brian Wall was able to oblige with a link to Family Tree Magazine which has a whole section on interviewing techniques.

(<http://www.familytreemagazine.com/articlelist/interviewing>)

He also showed us the "Register of One Place Studies" web page. The site specializes in the study of a particular place, with lists of resources and general information. It costs nothing to use or join the register and if you have a large collection of data for a place and are willing to register it, you could assist a lot of fellow researchers.

(<http://www.register-of-one-place-studies.org.uk/>)

David Andreassen told us he recently exchanged some information he had obtained from Trove (<http://trove.nla.gov.au/>) with a family member regarding their common ancestor. He noted that *Lost Cousins* 12 July newsletter has an interesting article on the dangers of online sharing. There is also some very good advice to be obtained from the National Genealogical Society who recommend standards to be observed when sharing genealogy information with others. (http://www.ngsgenealogy.org/cs/standards_for_sharing_information).

LAN-slide

by Craig Mattson

July 2014

On behalf of the event coordinators, a big thanks to everyone that came down and made LAN-slide V8.0 an awesome event.

With over 110 players attending this event, the place was rocking. A big shout-out to Steelseries, Tt eSPORTS, Valve and Riot for providing awesome prizes. Also, thanks to Red Bull for giving us plenty

of wings throughout the event. It was great to have continued support from Gamestah, who provided great commentary for both our CS:GO and LOL matches.

The charity raffle raised \$545.55 for Child's Play Charity. Hope everyone gets a much needed sleep and we'll see you in about three months for LAN-slide V9.0!

Northern Suburbs Linux

by Paul Addis

April 2014

Nick Vespo's Linux News video provided a good start to the meeting. Items included:

- Google's remade desktop, which can be downloaded as a Chrome extension. This prompted speculation about what else is in store for Chrome, and other Google products.
- Some notable Raspberry Pi (Rpi) projects, such as: LapPi – a laptop incarnation of the Rpi;
- PiGlo – module to support Rpi illuminating on-board LEDs. This is used for ISSAbove – the ability to track the International Space Station and signal when it is overhead via illumination of the coloured LEDs; and
- PiPhone – an implementation of a mobile phone, which needs the addition of a GSM module to the Rpi.

Q & A

It started with a question about Ubuntu and upgrades. Kernel upgrades are incorporated as they become available, but an upgrade from one release to another (e.g. 12.04 to 14.04) requires a re-install of applications as well as a re-build of the system. Open SUSE has a different strategy, which involves the use of .diff files that provide an ability to continuously upgrade. A further question of "why don't all distributions do that" had no answer from within the group.

There was a question about the removal of accounts. This is not possible for Facebook and LinkedIn, but is possible for Google.

Presentation 1: Universal Extensible Firmware Interface (UEFI) and Secure Boot

UEFI was developed as a replacement for the twenty year old BIOS, aiming to be more flexible and scalable. One of its major thrusts is to prevent or reduce the ability of malware to infect systems before the operating system is active. This aim is achieved by a comparison of certificates present in the machine firmware and the boot function. If the certificates do not compare correctly, it is likely that a malware infection is present, and the system will not boot.

The certificates vital to UEFI Secure Boot are provided by a Certificate Authority (CA): at present the only CA is Microsoft, a situation that is causing some concern in the Linux community. Even so,

some Linux distributions have the requisite authority and can be securely booted.

Presentation 2: Zorin OS

Zorin OS is a new-ish low-resource Linux distribution that has claims to be suitable successor to Windows XP. It can have the look and feel of a Windows desktop, and could therefore be a relatively easy introduction to Linux for XP users. It comes in a number of flavours, from the Lite version to the Ultimate version, which is much larger and more comprehensive.

One feature of Zorin is the "Look Changer", which gives the ability for Zorin to display a desktop in a number of flavours, including Windows XP, 2000. Win 7, Mac OS, and Ubuntu with Unity.

XP users would still have the problem of needing to re-build all their applications, some of which can run under Wine, and some of which may or may not have a Linux equivalent if they will not work with Wine. It is a brave attempt to help Windows XP users who may be stranded by the cessation of XP support.

Presentation 3: First look at Ubuntu 14.04

David Hatton demonstrated Ubuntu 14.04 using a guest account. The default desktop uses Unity. Many of the improvements to this release are quite subtle, but the result is an improved user experience. One change is that menus can be shown in the application window, rather than in the task bar.

There are many keyboard shortcuts, and these can be shown in a separate window by pressing and holding the "Super" key, known as the Windows key in other contexts.

It is also possible to set the size of the icons in the launcher. Videos play "out of the box", and the general impression is of a more stable release.

July 2014

A Linux News video provided by Nick Vespo was shown at the start of the meeting. The video presenter looked at a media player based on the Intel NUC, with XBMC as the software vehicle. (NUC is Next Unit of Computing – a small form factor PC designed by Intel.) The bare bones NUC needs some additional components to make it suitable as a media device, including a power pack, memory (4 GB RAM basic or 8 GB for gaming), an SSD (Intel SSD suggested) and wireless. An Australian retail offering along these

lines could be priced at around \$700.

The presenter recommended the use of Windows 7 or 8, but suggested that Linux could be an alternative. The XBMC Linux distribution might be a good fit for this media player device. To provide keyboard and mouse function, the suggestion is to use a mobile phone. There is a suitable mobile phone app, and a matching one for this machine.

The video prompted a healthy discussion about power supplies for this type of unit.

Main presentation

David Hatton talked about the latest version of the Raspberry Pi. It is called the Raspberry Pi Model B+. Improvements over the model B (one of the two

original models) include:

- The new model is more energy efficient;
- The board layout has been improved;
- There is an expanded GPIO header (40 pins vs 26);
- Two additional USB ports (4 vs 2). No longer are all USB ports used by keyboard and mouse;
- A new four-pole 3.5mm connector replaces the analog and composite video connections;
- A new Micro SD port reduces the risk of damage. The micro SD card does not protrude in the way that the earlier SD card did;
- Improved power management enabling more power-hungry USB devices to be attached without needing a powered USB hub.

Yarra Ranges

by John Sapsford

July 2014

Bryan Paten commenced the meeting with a PowerPoint presentation about the Gizmo Freeware email messages he thought might interest the members. The Tech support website is a facility to sign up to receive the Gizmo's email regularly: <http://www.techsupportalert.com/>

The email messages cover a range of interesting topics including tech tips, tech treats, hot finds, popular freeware, and much more.

Here are a few examples:

- [View 85,000 Historical Newsreel Videos For Free](#)
- [Get A Disposable, Secure Email Address On Demand. For Free](#)
- [Why Are Your Photos Upside Down?](#)
- [Large Collection of Free eBooks from Microsoft](#)

Other discussions

- We looked at <http://explore.org/> to view webcams of a variety of wild animals.
- We discussed a recent article in *The Age* about the security of the latest smart bulbs which can be controlled wirelessly using an app on your smart phone.
- One member reported on an article in the free *mX* newspaper about the mail order bookshop Amazon's application for permission to use drones to deliver packages up to 2.3 kg to customers in 30 minutes.
- Downloading YouTube videos. A Flash video downloader is available for users of Chrome.

BREAKING NEWS – Our Melb PC Online SIG

If you keep an eye on the Online Marketplace Group you may be able to pick up a bargain, or one being offered free to a good home (FTGH). We recently had a freezer on offer FTGH!

You can list your unwanted items and pick up a bargain in our Marketplace Online SIG (Newsgroups) too.

We find many interesting photos and videos offered on the Online SIG. A four minute video of "Melbourne in the 60s" was fascinating, as were extra historic photos taken around Melbourne, which includes a "clock face" traffic light. All great memories.

There's always something interesting to read or view in the Online SIG (Newsgroups)



GROUP DETAILS

Blue headings are special interest groups at Melb PC Headquarters, Moorabbin.

Green headings are local/general groups.

Red indicates a recent change.

Details of the interest groups are also available at: <http://groups.melbpc.org.au>

ACCESS (DATABASE) AND EXCEL

access@melbpc.org.au

<http://groups.melbpc.org.au/~access/>

Convener Craig Evans Craig_Evans@racv.com.au

Date Second Monday
(except January)

Time 6.30pm-8.30pm

Venue Melb PC Headquarters
Level 1, 479 Warrigal Rd, Moorabbin

BALLARAT

Convener Alan Pittard 5339 4235

Date First Thursday

Time 7.30pm-9.45pm

Venue Midlands Golf Club Heinz Lane Ballarat

BAYSIDE

bayside@melbpc.org.au

<http://groups.melbpc.org.au/~bayside/>

Convener John Morris 9583 4095
Graham Ackland 9589 6229

Date Third Thursday

Time 10am-12 noon main meeting
12 noon-1pm beginners' subgroup

Venue St Stephens Church Hall, Cnr Cochrane
Street and North Road Brighton.

CASEY

casey@melbpc.org.au

<http://groups.melbpc.org.au/~casey/>

Convener Jan Whitaker 9705 9009
Jan Weiner 9796 2807

Date Second Friday
(except January)

Time 12.30pm-3pm

Venue Narre Warren Library (Fountain Gate)
Overland Drive Narre Warren 3805
Melway 110 D4

CASEY WORKSHOP

Convener Jan Weiner 9796 2807
Jan Whitaker 9705 9009

Date Fourth Friday

Time 12.30-3pm

Venue Narre Warren Library (Fountain Gate)
Overland Drive Narre Warren 3805
Melway 110 D4

COMMUNICATIONS

phil@melbpc.org.au

Convener Philip Lew 0418 567 019

Date Second Wednesday
(except January)

Time 7-9.30pm

Venue Melb PC Headquarters
Level 1, 479 Warrigal Rd, Moorabbin

DIGITAL PHOTOGRAPHY

Convener Ian Bock 9807 3701

bockey@melbpc.org.au

Date Third Friday
(except December)

Time 10am-12 noon

Venue Wadham House 52 Wadham Parade
Mount Waverley Melway 61 E12

E-BOOK

ebook@melbpc.org.au

Convener Dennis Fieldhouse 9557 6847
John Swale 0417 530 766

Date Second Thursday (except January)

Time 7pm

Venue Melb PC Headquarters
Level 1, 479 Warrigal Rd, Moorabbin

BEAST (BEGINNERS EAST)

beast@melbpc.org.au

Convener Dave Botherway daveb@melbpc.org.au

Date Third Sunday (February to November)
Second Sunday in December (no January
meeting).

Time 10am-12.30pm

Venue Vermont South Community Centre
Karoobran Drive, Vermont South. Melway 62 G7

GENEAST (GENEALOGY EAST)

geneast@melbpc.org.au

Convener Ron Harper rharper@melbpc.org.au
Date Third Sunday (February to November)
 Second Sunday in December (no January meeting).
Time 1pm-3.30pm
Venue Vermont South Community Centre
 Karobran Drive, Vermont South. Melway 62 G7

EAST

east@melbpc.org.au

<http://groups.melbpc.org.au/~east>

Convener Paul Woolard 9877 1059
 Ian Dewhurst 0438 480 500
Date Second Wednesday (except January)
Time 7.30pm-10pm
Venue Vermont South Community Centre
 Karobran Drive, Vermont South. Melway 62 G7

EAST WORKSHOP

eastwsh@melbpc.org.au

Convener Ken Gubbins 9842 8875
 Jeff Webster 9078 0879
Date Second Sunday
Time 10am-2pm
Venue Wadham House 52 Wadham Parade
 Mt Waverley rear of Library. Melway 61 E12

ESSENDON

essendon@melbpc.org.au

<http://groups.melbpc.org.au/~essendon>

Convener John Guegan 9317 7114
Date First, second, and third Friday
Venue Nancye Kirchner Neighbourhood Centre,
 Doyle Street Avondale Heights
 Melway 27 D6
Date First Friday: Main meeting.
 Second Friday: Open Forum.
 Fourth Friday: Varies
 (check website for details).
Time 9:30am-12 noon

Multimedia/General

Date Fourth Wednesday
 (except January)
Time 7pm-9pm

EVERYTHING APPLE

everything-apple@ausom.net.au

Convener Susan Jensen 9885 7060
 Damian Vuleta 9509 9992
Date Second Tuesday (except January)
Time 2pm-4pm
Venue Melb PC Headquarters
 Level 1, 479 Warrigal Rd, Moorabbin

EVERYTHING IPAD

everything-ipad@ausom.net.au

Convener Dick Johnson 9857 7362
Date Third Wednesday (except January)
Time 2pm-4pm
Venue Melb PC Headquarters
 Level 1, 479 Warrigal Rd, Moorabbin

GRAPHICS/ANIMATION

graphics@melbpc.org.au

<http://groups.melbpc.org.au/~graphics>

Convener Yahya Abdal-Aziz
 Roger Wragg rdwragg@fastmail.fm
Date Third Monday
Time 7.30pm-9.30pm
Venue Melb PC Headquarters
 Level 1, 479 Warrigal Rd, Moorabbin

HARDWARE

Convener Kelvin Cording 9438 1047
kcording@bigpond.net.au
 Bill Dair 9802 4242
wedair@melbpc.org.au
Date Second Friday (except January)
Time 10am-12 noon
Venue Wadham House 52 Wadham Parade
 Mount Waverley Melway 61 E12

HARDWARE WORKSHOP

Convener Barry Martin barrymar@melbpc.org.au
Date Fourth Saturday
Time 10am-12 noon
Venue Melb PC Headquarters
 Level 1, 479 Warrigal Rd, Moorabbin

iHELP

office@melbpc.org.au

<http://groups.melbpc.org.au/~ihelp>

Convener Rotational
 (check with office for current details)
Date Approximately 6 monthly
Time 7-9pm
Venue Melb PC Headquarters
 Level 1, 479 Warrigal Rd, Moorabbin

GROUP DETAILS

LAN-SLIDE GAMING

<http://www.lanslide.com.au>

<http://www.facebook.com/groups/lanslide>

Convener Brendon Taylor, Craig Mattson

Date See website for details

Time 26-hour gaming event
10am Saturday until 12 noon Sunday

Venue Melb PC Headquarters
Level 1, 479 Warrigal Rd, Moorabbin

LINUX AND OPEN SOURCE WORKSHOP

linux@melbpc.org.au

<http://member.melbpc.org.au/~linux>

Convener James Cox 9885 5503

Date Second Tuesday (except January)

Time 4pm-7pm

Venue Melb PC Headquarters
Level 1, 479 Warrigal Rd, Moorabbin

LINUX AND OPEN SOURCE

linux@melbpc.org.au

<http://member.melbpc.org.au/~linux>

Convener James Cox 9885 5503

Date Second Tuesday (except January)

Time 7pm-9.30pm

Venue Melb PC Headquarters
Level 1, 479 Warrigal Rd, Moorabbin

MACE (MELBOURNE ATARI COMPUTER ENTHUSIASTS)

Convener Andrew Boschan 5426 1917 AH

Enquiries 0500 818 448

Date Third Sunday

Time 10am-2pm

Venue Melb PC Headquarters
Level 1, 479 Warrigal Rd, Moorabbin

MACEDON RANGES

Convener John Hunter 0406 868 226

Date Third Sunday

Time 2-4pm

Venue Further Education Centre
18 Hamilton St Gisborne

MICROCONTROLLER

phil@melbpc.org.au

Convener Philip Lew 0418 567 019
John Hollow 0417 031 164

Date Second Wednesday (except January)

Time 7pm-9.30pm

Venue Melb PC Headquarters
Level 1, 479 Warrigal Rd, Moorabbin

MICROCONTROLLER WORKSHOP

microws@melbpc.org.au

Convener John Shirt 0409 568 267

Rob Brown 0419 285 806

Date Second Saturday (except January)
Fourth Saturday (except December)

Time 12 noon-5pm

Venue Melb PC Headquarters
Level 1, 479 Warrigal Rd, Moorabbin

MULTIMEDIA HOME ENTERTAINMENT (MHE)

multimed@melbpc.org

<http://www.melbpc.org>

Convener John Hall 9803 2731

johnhall@melbpc.org.au

Kelvin Cording 9438 1047

kcording@bigpond.net.au

Date First Friday (except January)

Time 10am-12 noon

Venue Wadham House 52 Wadham Parade
Mount Waverley Melway 61 E12

MUSIC

music@melbpc.org.au

<http://groups.melbpc.org.au/~music>

Convener Yahya Abdal-Aziz, David Godfred

Date Third Thursday

Time 7.30pm-9.30pm

Venue Melb PC Headquarters
Level 1, 479 Warrigal Rd, Moorabbin

MORNINGTON PENINSULA

peninsula@melbpc.org.au

<http://groups.melbpc.org.au/~pennsula>

Convener Terry Said 0427 750 327
termarl@satlink.com.au
 Ian Thomson iaroth@netspace.net.au
 Colin Ackehurst
colin_a_ackehurst@bigpond.com
Date Third Monday (except December)
Time 9.30am Day (general) Meeting
Venue Mornington Information Centre
 320 Main St Mornington

MORNINGTON PENINSULA DIGITAL IMAGING

peninsula@melbpc.org.au

<http://groups.melbpc.org.au/~pennsula>

Convener Lloyd Lobbe
Date Third Monday (except December)
Time 12.30pm
Venue Mornington Information Centre
 320 Main St Mornington

MORNINGTON PENINSULA FAMILY HISTORY

peninsula@melbpc.org.au

<http://groups.melbpc.org.au/~pennsula>

Convener Colin Ackehurst
colin_a_ackehurst@bigpond.com
Date Third Monday (except December)
Time 2pm
Venue Mornington Information Centre
 320 Main St Mornington Family History
 Group (Genealogy)

NORTH EAST GENEALOGY

negen@melbpc.org.au

<http://member.melbpc.org.au/~negen/>

Convener Lynn. Hammet lynnhammet@gmail.com
Date First Tuesday (except January)
Time 10am-12.45pm
Venue Uniting Church Hall 19 Seddon Street
 Ivanhoe, parking at the rear, Melway 31 F8

NORTH EAST DAYTIME

neday@melbpc.org.au

Convener Colin Lampshire 9857 5372
 or 0413 640 408 lampshir@melbpc.org.au
Date Second Thursday (except January)
Time 10am-12.15pm
Venue Uniting Church Hall 19 Seddon Street
 Ivanhoe, parking at the rear, Melway 31 F8

Photography & Digital Imaging on alternate months.

NORTH EAST PHOTOGRAPHY/DIGITAL IMAGING

neday@melbpc.org.au

Convener Colin Lampshire 9857 5372
 or 0413 640 408 lampshir@melbpc.org.au
Date Second Thursday of every **second** month
 (except January)
Time 10am-12.15pm
Venue Uniting Church Hall 19 Seddon Street
 Ivanhoe, parking at the rear, Melway 31 F8

NORTH EAST ANDROID

ne-android@melbpc.org.au

Convener Colin Lampshire 9857 5372
 or 0413 640 408 lampshir@melbpc.org.au
 Kelvin Cording 9438 1047
Date Third Wednesday (except January)
Time 10am to 12 noon
Venue Uniting Church Hall 19 Seddon Street
 Ivanhoe, parking at the rear, Melway 31 F8

NORTH EAST

neast@melbpc.org.au

<http://groups.melbpc.org.au/~neast>

Convener Choy Lai 9497 3128
Date Fourth Tuesday (except December)
Time 7.30pm-9.30pm
Venue Uniting Church Hall 19 Seddon Street
 Ivanhoe, parking at the rear, Melway 31 F8

NORTHERN SUBURBS LINUX

nslig@melbpc.org.au

<http://groups.melbpc.org.au/~nslig>

Convener David Hatton, Stephen Davidson
Date Third Monday
 (except December)
Time 7.30pm to 9.30pm
Venue Community Meeting Room Watsonia Library,
 Ibbotson St Watsonia Melway 20 E4

ONLINE SIG

kazkev@melbpc.org.au

<http://www.melbpc.org.au/faq/newsgroups.htm>

Convener Kevin Martin (evening only)
 5964 7627 or 0407 343 162
Venue Melb PC Newsgroups and Forum

GROUP DETAILS

PROGRAMMING

programming@melbpc.org.au

Convener Yahya Abdal-Aziz
John Viney
Date Fourth Tuesday
Time 6.30pm-9pm
Venue Melb PC Headquarters
Level 1, 479 Warrigal Rd, Moorabbin

RASPBERRY PI

Convener John Hall 9803 2731 johnhall@melbpc.org.au
Lance Lloyd 9884 5559
lancelloyd@melbpc.org.au
Date Fourth Friday
(except December)
Time 10am-12 noon
Venue Wadham House, 52 Wadham Pde
Mount Waverly, Melway 61 E12

SONY VIDEO PRODUCTION

Convener Roger Wragg rdwragg@fastmail.fm
Bob Flack
Date Second Wednesday
Time 10am-12 noon
Venue Melb PC Headquarters
Level 1, 479 Warrigal Rd, Moorabbin

SUNBURY

sunburydaytime@gmail.com
<http://groups.melbpc.org.au/~sunbury>

Convener Kevin Day 9744 2514
Kevin Hale 9740 5786
Date Every Thursday
Time 9.30am-12 noon

New Users

First Thursday.
Everyone welcome.

Maintenance

Second Thursday.
Fifth Thursday (when there is one).
Problems discussed, sometimes solved.

Main Meeting

Third Thursday. Demos, presentations etc.

Linux

Fourth Thursday.
A new experience.
Venue Sunbury Senior Citizens Centre (back room)
8 O'Shannassy Street Sunbury Melway 382 E4

VIDEO INNER EAST

videoinnereast@gmail.com

<http://users.tpg.com.au/adslo8nb/vie/index.html>

Convener Richard Balsillie 9809 4116
Date Fourth Monday
(except January, December)
Time 7pm-9pm
Venue Balwyn Library Meeting Room
336 Whitehorse Road Balwyn.

WAFFLE (WINE & FOOD LOVERS' EVENT)

phil@melbpc.org.au

Convener Phillip Lew 0418 567 019
Tom Rado 9807 4072
Date First Wednesday
Time After the monthly meeting
Venue Fong's Chinese Restaurant, 725 Centre Rd
Bentleigh East. Cnr. Francesco St. Melway 77 J1
BYO and licensed. Budget supper get-together.
Patrons are welcome even if only for coffee.
How-to-get-there sketch maps are available at
the monthly meeting.

WASINT (WEB AND SOFTWARE INVESTMENT TOOLS)

wasint@melbpc.org.au

<http://groups.melbpc.org.au/~wasint>

Convener Richard Solly
Date Second Tuesday (except January)
Time 10.30am-12.30pm
Venue Melb PC Headquarters
Level 1, 479 Warrigal Rd, Moorabbin

WEBSITE DESIGN

webdesign@melbpc.org.au

<http://groups.melbpc.org.au/~webdesign>

Convener Fleur Stephens 0407 330 963
Date Fourth Sunday
(except December and January)
Time 2pm-4pm tutorials
4pm-6pm troubleshooting
Venue Melb PC Headquarters
Level 1, 479 Warrigal Rd, Moorabbin

WINDOWS 7&8

Convener John Swale jswale@melbpc.org.au
Jan Weiner 9796 2807 (co-convener)
Date Third Saturday
(except January)
Time Windows 7 10am-12 noon
Windows 8 1pm-3pm
Venue Melb PC Headquarters
Level 1, 479 Warrigal Rd, Moorabbin

WYNDHAM

wynd@melbpc.org.au

<http://groups.melbpc.org.au/~wynd>

Convener Chris Hughes 9731 0891, John Healey
Venue Room 3 Central Park Community Centre
Lonsdale Circuit off Franklin Blvd.
Hoppers Crossing. Melway 206 J1
Date Third Tuesday
(except December and January)
Time 7.30pm-9.30pm

WYNDHAM MULTIMEDIA

wynd@melbpc.org.au

<http://groups.melbpc.org.au/~wynd>

Convener Chris Hughes 9731 0891, John Healey
Date Second Monday
(except January)
Time 7.30pm-9.30pm
Venue Room 3 Central Park Community Centre
Lonsdale Circuit off Franklin Blvd.
Hoppers Crossing. Melway 206 J1

YARRA RANGES

yrig@melbpc.org.au

<http://groups.melbpc.org.au/~yrig>

Convener Bryan Paten 0429 430 640
Shane Mason 9733 5390
Date Fourth Tuesday (except December)
Time 9.15am (followed by the Workshop)
Venue Japara Community House
13 Leith Road Montrose Melway 52 D7

YARRA RANGES WORKSHOP

yrig@melbpc.org.au

<http://groups.melbpc.org.au/~yrig>

Convener Bryan Paten 0429 430 640
Shane Mason 9733 5390
Date Fourth Tuesday (except December)
Time After the 9.15am main meeting
Venue Japara Community House
13 Leith Road Montrose Melway 52 D7

Everything iPad/iPhone

This is a joint venture between MelbPC and AUSOM with an emphasis on the Apple iPad and iPhone, and helping people understand the iOS environment.

Convenor: Dick Johnson 9857 7362

E-mail to: everything-ipad@ausom.net.au

**Next Meeting:
17 September**

Presented by Dick Johnson

2:00 pm - Borrowing Electronic Books from a Public Library

Some of you will have bought ebooks from Amazon and such but did you know that you can also borrow them from your local library? Dick shows us how.

3:00 pm - Pages: what the latest update offers

Pages has been totally rewritten on both the Mac and iOS platforms, so that one day the two should work together seamlessly.

While others bemoan the apparent departure from a reliable productivity aid, Dick explores glimmers of possibilities in Apple's fledgling redesign.

This will be a full two hour session with a short break around 3pm.



Third Wednesdays, 2:00 pm - 4:00 pm (except January)

Moorabbin Interest Group Room - Level 1, 479 Warrigal Road, Moorabbin

Melb PC needs your help

We need more members of Melb PC and you can help!

Do you wish your friends and neighbours to enjoy the benefits of Melb PC that you do?

Did you know that if we recruit new members (and you are nominated as a referrer) you can receive a rebate on your membership fees?

Furthermore, if we gain more members it will:

- help Melb PC become more sustainable and continue to provide great benefits to its members, and
- help Melb PC keep membership costs down.

So how else can you help Melb PC gain more members?

Do you exercise by walking around your local area? If so, why not ask the office to send you some of our recent flyers which you could drop off into neighbourhood letterboxes while you walk? It's easy to do (just avoid those letterboxes with "No Junk Mail" stickers) and gives you a reason to find new areas to walk around.

Ring the office on (03) 9276 4000 or email office@melbpc.org.au and one of the Office team will post you out a batch.

**INTERESTED IN
COMPUTERS,
SMART DEVICES
AND TECHNOLOGY?**

Join the Club...



"Members helping Members"

Since 1984



www.melbpc.org.au

Tel: 9276 4000

Melb PC Library Information

As a service to members of Melbourne PC User Group, a reference library of approximately 600 computer books is provided at our library at our Moorabbin offices.

Members who come in to the office may browse the library in person. Books may be borrowed for one month, with a limit of three books on loan to any one member at one time.

To assist in book selection, a link to the catalogue of the available books is shown together with a copy of the library rules for the information of members.

Catalogue Listing to Dec 2013: <http://www.melbpc.org.au/library/>

Some of the newer books include:

Windows 7 Inside Out
Windows 7 Step by Step
Windows 8 Bible
Windows 8 Secrets
Windows 8 Step by Step

Windows 8 Teach Yourself Visually
Windows 8 for Dummies
Windows 8 Inside Out
Windows 8 Plain & Simple
Windows 8.1 for Dummies



Committee 2013–14

To contact a member of the Committee, please go to:

<http://melbpc.org.au/CommitteeContacts>.



PRESIDENT
Harry Lewis



VICE-PRESIDENT
Roger Wragg



TREASURER
Geoffrey Keenan



SECRETARY
Ian Rankin



MEMBER
Norman Elliman



MEMBER
Phil Lew



MEMBER
Lance Lloyd



MEMBER
Don McKenzie

The overall responsibility for Melb PC business lies with the Committee (except for matters reserved to general meetings). Our rules and Committee decisions have identified specific responsibilities as follows. Members wishing to discuss any of these matters are invited to contact the responsible person from this list, and on any other matter to contact the President or the Secretary, via <http://melbpc.org.au/CommitteeContacts>.

President	Harry Lewis
Vice-President	Roger Wragg
Secretary	Ian Rankin
Treasurer	Geoffrey Keenan
Buildings and facilities	Roger Wragg
Email upgrade	President
Internet management committee	President
Librarian	Yahya Abdal-Aziz
Membership and marketing	Lance Lloyd

Monthly meetings	
Sourcing presentations	President
Hosting	Stewart Gruneklee
SIG Co-ordinator	Norman Elliman
Website	
Development	President
Content	President
Technical development	Craig Mattson

Note: all the above are members of the Committee 2013–14 except for Yaha Abdal-Aziz, Craig Mattson and Stewart Gruneklee.

INTERNET HELP (IHELP)

For members needing assistance, iHelp is a group of “Users helping Users.” Their main role is to sort out Internet or general PC problems. Assistance can be obtained in various ways depending on your connectivity and convenience.

Internet Help (iHelp)

The main iHelp system for Melb PC members is accessed from the [Internet Services Page](#) on the Melb PC website under the link titled “Internet Help”, which goes to <http://ihelp.melbpc.org.au/helpdesk/iuser/index.asp>.

After entering your Membership Number and First Name, you are able to “Log a Service Request”, with details of your problem.

When an appropriate iHelper is available, they will contact you at your registered phone number or email address, which should therefore be kept up-to-date at the office.

All efforts will be made to ensure someone replying to your request is familiar with the issue, however if the problem cannot be solved

to your satisfaction, you may wish to refer to other Group resources as detailed below.

First Aid/Live Chat

Telephone/chat support for simple and urgent problems, Monday to Friday between 10am and 3pm (may include office holidays).

Call (03) 9276 4088 or select Live Chat from the “Internet Help” link.

Outside these hours, or if iHelpers are not available, just leave a message (including your membership details), and it will be passed onto the iHelp team.

If the problem cannot be resolved within 15 minutes it is generally referred to Internet Help, where an appropriate iHelper will follow up the inquiry.

OTHER WAYS TO GET HELP

FAQS

On the [Internet Services Page](#) there is a link to Frequently Asked Questions (FAQs) on using the Melb PC Internet Service. In many cases a solution will have already been documented.

Online SIG (Newsgroups)

For those familiar with using newsgroups, we suggest that you subscribe to melbpc.connectivity, melbpc.computing.misc, or melbpc.general.

Alternatively, you can access the messages via an online web-based forum, via the [Internet Services Page](#). See the following page for more details.

SIG Meetings

Most SIGs hold monthly meetings in locations around Melbourne. These provide the

opportunity for one-on-one discussion with knowledgeable local members. Details of SIGs can be found in *PC Update*, or from the [Internet Services Page](#) from the top link titled “Interest Group Pages.”

SIG Workshops

Some SIGs hold monthly workshops, in locations around Melbourne. These provide the opportunity for hands-on assistance with your PC from local knowledgeable members.

Details of SIG workshops can be found in *PC Update*, or from the [Internet Services Page](#) from the top link titled “Interest Group Pages.”

Please contact the Convener at least 24 hours before attending so they can research the problem, and bring to the meeting any hardware or software that might be needed.

Monthly Meeting Q&A

At the Moorabbin Monthly General Meeting, besides interaction with other members, there is always a Q&A session hosted by one of the Group's computer experts. If you have a straightforward question, this is often a good place to get a precise answer with additional feedback from the audience.

Dial Help

The Dial Help service is described here:

<http://www.melbpc.org.au/help>.

If your problem relates to one of the listed categories, the relevant volunteer may be telephoned for specific advice. Calls can be made

between 9am to 5pm and 6.30pm to 9pm.

Please keep all calls short, particularly during business hours, and don't expect a volunteer to call you back on a mobile phone number.

Home Visit Assist

This service is only for members who are restricted in their activities or mobility. This generally means those with an Age or Disability Pension.

The contact for Home Visit Assist is the Office Phone: (03) 9276 4000, or by email to:

office@melbpc.org.au.

NEWSGROUPS VIA ONLINE WEB-BASED FORUM

Accessing the forum is a two-step process. The first step gains read-only access using your Melb PC credentials. i.e. username and password as for email or Webmail:

fdagg yourpassword

The second step, to enable posting of messages, requires a separate forum username and password i.e. you need to join the forum. Currently the only way to do this is to post a message in one of the newsgroups (use melbpc.general) using a news client such as Thunderbird. A forum membership is then automatically generated based on the name and email address used:

Fred Dagg fdagg@melbpc.org.au

This can be done on a member's behalf by sending an email to online@melbpc.org.au detailing the name and email address you wish to use. Please use your real name as we're a friendly bunch, and note that the newsgroups are private and only accessible by fellow Melb PC members. You don't have to use your Melb PC email address.

Once the forum membership has been created you will receive an auto-generated email to confirm you really do want to join. Confirm and then use the forum's "forgotten password" link to generate a new password. This is all handled between the forum software and the user nominated email account so no-one else has access to the password.

Please note that using the forum for posting newsgroup messages is still somewhat experimental, but does work quite well.



Membership Drive

**Introduce a new member*
to Melbourne PC User Group
and receive credit towards your membership fees.**

Dear Member,

Your friend will receive all the benefits you already enjoy – the digital magazine [*PC Update*], the help lines, the Special Interest Groups (SIGs), the monthly meetings, workshops, discounted products, email addresses and access to mobile broadband – and you will be helping your club to grow.

Each new member* you enrol gives you two months' credit towards your membership renewal (approx. \$12 value against a full membership). The more new members you enrol, the more credit towards your next membership renewal. No limits apply.

You know how much you enjoy being part of Melbourne PC User Group. So why not bring along a friend to enjoy it too? Prospective new members are always welcome at the monthly or SIG meetings.

And every time you enrol a new member, you get 2 months' credit registered against your next membership dues.

(*This does not include family members and anyone re-joining within 12 months of leaving Melb PC)

Everything Apple

Convener:
Susan Jensen (03) 9885 7060
Assistant Convener:
Damian Vuleta (03) 9509 9992
E-mail to: applesig@melbpc.org.au or
everything-apple@ausom.net.au

This is a joint venture between Melb PC and AUSOM. The emphasis will be on Apple iDevices (iPod, iPhone, iPad, AppleTV, Time Capsule, Airport Extreme) and helping people understand the Mac environment.

Next Meeting: 9th September

2:00 pm

Making Movies with QuickTime Player X

Presented by Damian Vuleta

Ever wanted to quickly make a movie? Need to carry out some quick sound editing? Want to show someone computer techniques but can't be there? You have the answer: QuickTime Player X. Damian will show you how this simple program can be highly useful.



3:00 pm

Q & A Session

Presented by Susan Jensen and Damian Vuleta

Bring your Mac or iDevice questions and we will try to answer them.

There will be a 15-minute break for tea and coffee, and time for questions afterwards.

Second Tuesdays (except January),

2:00 pm–4:00 pm

Melbourne PC Headquarters,

Level 1, 479 Warrigal Rd, Moorabbin

MELB PC APPLICATION FORMS



MELBOURNE PC USER GROUP INC.

MEMBERSHIP APPLICATION FORM

Title	First Name	Last Name
Address		
Suburb		Post Code
Phone		Mobile Number
DOB	Preferred Email Address	
Referred by member: _____ full name or membership number /SIG_____		

Annual Membership Fees

Individuals	\$75 each
Additional Family Members (Spouse and children)	\$22 each
Pensioners/Adult students A (25+)*	\$60 each
Students B (14-25 yrs)	\$35 each

Please provide emergency contact details below.

Full Name
Phone no.
Mobile no.

Additional Family Members

Name	Signature
Name	Signature

Terms and conditions

- Adult students A must attach a photocopy of their student card or letter from their educational institution confirming full student status.
 - All student B members must have a Student Card and have evidence of their age at time of joining.
 - Pensioners must attach a photocopy showing both sides of their Centrelink Pension Concession Card.
- Change of family member(s) must be identified in writing to the club secretary.

I hereby apply for membership of Melbourne PC Users Group Inc. (A000329V) and agree to abide by its rules while I remain a member.

Signature _____ Date ____/____/____

Payment Details

Name on Card	Expiry Date
Credit Card Number	
Signature	Date ____/____/____

Email User Name Selection

List the user ("login") names you would like in order of preference. Write very clearly, to avoid our confusing certain letters. User names are expressed in lower case letters and must represent your real name in some recognisable way e.g. "John J. Jones" might request user names such as "john", "johnj", "jjones", etc. Any user name that is already allocated or deemed unsuitable in the opinion of the system administrators will not be allocated.

- Choice 1. _____@melbpc.org.au
- Choice 2. _____@melbpc.org.au
- Choice 3. _____@melbpc.org.au
- Choice 4. _____@melbpc.org.au

MELB PC APPLICATION FORMS



ABN 43 196 519 351
(Victorian Association Registration No. A0003293V)
Unit 26, 479 Warrigal Road, Moorabbin VIC 3189
Telephone: (03) 9276 4000
Email: office@melbpc.org.au
Web: www.melbpc.org.au

EMAIL ACCOUNT APPLICATION

Membership No.	First Name	Last Name	DOB
Address		Current Email Address	
Suburb	Post Code	Phone	Mobile Number

Email User Name Selection

List the user ("login") names you would like in order of preference, up to eight (8) lowercase letters, numbers may be used in place of letters. Write very clearly, to avoid confusing certain letters and numbers. User names are expressed in lower case letters only e.g. "John J. Jones" might request user names such as "john", "johnj", "jjones", "jjones2", etc. Any user name that is already allocated or deemed unsuitable in the opinion of the system administrators will not be allocated.

Choice 1.

Choice 2.

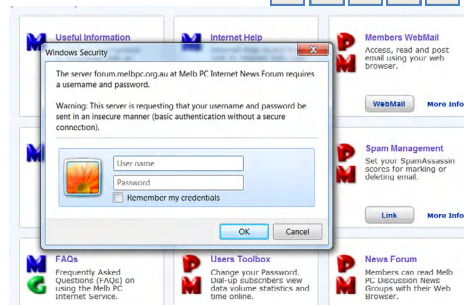
Choice 3.

Choice 4.

For email account hosted at melbpc.org.au webmail which can also be accessed from any mail reading application such as Gmail, Outlook, Thunderbird etc.

Access to the Melb PC newsgroups and a discussion forum where you will find a friendly, helpful bunch of people. Discussions include computing and almost every other topic under the sun!

<http://melbpc.org.au/isp/>



ABN 43 196 519 351
(Victorian Association Registration No. A0003293V)
Unit 26, 479 Warrigal Road, Moorabbin VIC 3189
Telephone: (03) 9276 4000
Email: office@melbpc.org.au
Web: www.melbpc.org.au

Subscription for Monthly Disc

Name	Membership Number
Address	Current Contact Email Address
Suburb	Post Code
Phone	

For Month	Feb	Mar	Apr	May	Jun	Jul	Aug	Sep	Oct	Nov	Dec	Total Amount \$

Price: \$3.00 per disc if you collect it from the office or purchase at the monthly meeting.

Add an Extra \$1.00 postage and handling if we mail your order.

Price for a yearly subscription is \$44.00 inc mailing to your home address.

Payment Details

Name on Card	Expiry Date on card	Signature	Date
			/ /



Melb PC Mobile Broadband Internet Terms and Conditions

A. Definitions

"Melb PC" means Melbourne PC User Group incorporated or its assignee:

"Member" means a financial member of Melbourne PC User Group and includes:

- "Full Member" a person accepted into the Group after payment of the current full membership fee, or the related Student or Pensioner concession fee.
- "Family Member" A domiciled spouse, partner, child or relative of a full member accepted to participate in activities of the Group and use that Member's Internet account after payment of the Family Membership fee: the subscriber" means the MelbPC full member who has accepted the Melb PC Internet Agreement and paid fees for the subscription period and includes both Full and Email account subscribers. (see Level of Description); "subscription periods" means the period in advance for which the subscriber has paid in full being one of the periods of subscription offered by Melb PC from time to time.

B. Subscription type & Details.

Subscription Type	Annual Fee or Monthly Fee	email & Newsgroup Storage or Mail Quota (Limit)	Browsing	Time Limit	Home Page Storage	Download Limit	When Limit Reached
3G Mobile Broadband 2GB 3G Mobile Broadband 4GB 3G Mobile Broadband 6GB 3G Mobile Broadband 8GB 3G Mobile Broadband 10GB 3G Mobile Broadband 15GB	\$210pa or \$20 pcm \$30 pcm \$35 pcm \$40 pcm \$45 pcm \$55 pcm		Yes			2GB pcm 4GB pcm 6GB pcm 8GB pcm 10GB pcm 15GB pcm	Excess data usage on all plans costs \$7.50 per 1GB or part thereof
4G Mobile Broadband 3GB 4G Mobile Broadband 6GB 4G Mobile Broadband 9GB 4G Mobile Broadband 12GB	\$30 pcm \$40 pcm \$50 pcm \$60 pcm		Yes			3GB pcm 6GB pcm 9GB pcm 12GB pcm	Excess data usage on all plans costs \$7.50 per 1GB or part thereof
4G Voice and Data Plan	\$35 pcm		Yes			1GB pcm	Excess data usage on all plans costs \$7.50 per 1GB or part thereof
Email account (www.outlook.com)	\$0	5GB	nil		Nil	nil	
ADSL Coming Soon	NA						

The above charges and details are subject to change from time to time. Limits and Time Quota: daily (non-cumulative) plus bonus time in non-peak periods.

Email Account Subscriber (available to all Melb PC Members without charge)

C. Description of Service(s)

General:

Melbourne PC User Group Inc. A0003293V (Melb PC) Internet Service network (the Network) is a service owned and operated by Melb PC for its members. It is a subscriber-funded service administered by the Internet Management Subcommittee (the subcommittee).

Function of the Melb PC Network: The primary function of the Network is to support the transfer of information to and from Melb PC members and the International community, subject to the terms of this agreement.

Access Software: The subscriber will need to acquire suitable mail, news and Web software from our shareware library or other resources. However, Melb PC makes available a configuration kit that automates his process for those who require it.

Accounts: Accounts are issued only to individuals, not company names; Melb PC may reject an application without stating a reason.

Support: Volunteers offer their help in local newsgroups and via an Internet Help team with interaction through Web Boards, e-mail and direct telephone support.

Duration: The subscription to the Network is for one year from the date of acceptance. It automatically terminates upon expiry of membership of MelbPC if that occurs earlier.

Acknowledgment: Successful applicants will include individuals whose forms are correctly filled out and whose funds have been transferred to the Melb PC Bank account.

Net Etiquette: Melb PC endorses adherence to ("Net etiquette" or "Netiquette") as deemed by the subcommittee from time to time and to prevailing International standards widely accepted as suitable behavior for using the Internet.

D. Terms of Agreement

- The subscriber asks Melb PC to provide a level of Internet access and Melb PC agrees to do so.
- This agreement starts when an authorized officer of Melb PC has executed it and Melb PC has received a cleared payment for the subscription period.
- If the subscriber renews this agreement for a further subscription period, this agreement applies to the renewed subscription period unless the parties agree otherwise in writing.
- The subscriber acknowledges that:
 - Continuity and speed of the Internet access depends on a wide range of factors many of which are beyond the control of Melb PC.
 - Melb PC has no control over the accuracy of appropriateness of any information on the internet.
 - Melb PC is not responsible for any material available on the Internet.
 - The subscriber's Internet access may be interrupted by equipment failure, the need for routine maintenance peak demand and so on.
 - Melb PC cannot guarantee that the subscriber will be able to secure access at any given time or that fluctuations in demand by other subscribers will not prevent the subscriber from using the full amount of the maximum daily time allowance on any given day.
 - Melb PC cannot guarantee that subscriber's home pages will always be available.
 - Dial up and Mobile Broadband Internet Subscribers are responsible for writing and uploading their own home pages and keeping backup copies of same. Melb PC does not back up these home pages. Subscribers will need to reload their own home pages in the event that the Melb PC facilities suffer any data loss.
 - The right to publish and communicate using home pages is granted to full Internet subscribers in the spirit of user group activities of sharing and furthering the computing experience. The quality of the Melb PC Internet service will be protected by Melb PC reserving its right to suspend the access to any publications of a subscriber who generates a disproportionate amount of Internet traffic. Subject to matters of the kind referred to in the previous clause and to the subscriber's access limits, Melb PC will use its best endeavors to keep Internet access available continuously and to allow the subscriber to have access for the current daily time allowance as set from time to time.
- The subscriber will indemnify Melb PC against any liability, claim, action, suit, demand, loss, cost or expense arising out of or in any way connected with this agreement or Internet access, including without limitation any negligence by Melb PC, its servants or agents.
- The subscriber will pay fees according to Melb PC's standard pricing list from time to time, and a copy of the list certified by an officer of Melb PC is conclusive evidence of the prices applicable at any time.
- Any notice given about any matter concerning this agreement may be given by clicking an accept button following the display of the agreement on a web page, by fax, e-mail or post at the last fax number email or postal address notified to the sender and is deemed to have been received at the time when it would have arrived in the ordinary course of the relevant type of transmission.
- Melb PC may change any term of this Agreement or make additional rules at any time by means of notification delivered in accordance with clause 9. Subscriber may refuse to accept any such change and terminate or her Internet access and receive a pro-rata refund for any paid subscription if a request to this effect this received within 14 days from the deemed receipt date of a notice of changes. Should a subscriber continue to keep using the service past the date of the notice deemed received as described in clause 9, the subscriber shall be deemed to accept the changes. A copy of the rules certified by an officer of Melb PC is conclusive evidence of the rules applicable at any time. The rules from time to time will apply as if they were set out in full as terms of this agreement.
- The subscriber must not deliberately or recklessly do anything that damages Melb PC's equipment, software, setup or services.
- The subscriber must not use Internet access to annoy, harass or harm other Internet users including sending of viruses either wittingly or unwittingly and the sending of spam or unsolicited bulk email.
- The subscriber must not use Internet access for any unlawful purpose or in any unlawful manner.
- Melb PC does not review any publications or communication and does not verify, endorse, or otherwise take responsibility for the content of same.
- Subscribers are legally responsible for their own publications and communications.
- The subscriber will keep safe and confidential any access numbers; codes or passwords allotted to them by Melb PC and notify Melb PC without delay of any compromise of that information.
- Melb PC may suspend or terminate the subscribers Internet access immediately if the subscriber breaches this agreement wittingly or unwittingly or fails to promptly pay any money owed to Melb PC or ceases to be a member of Melb PC.
- Melb PC may delete without notice any material found on its storage disks without giving any reason for doing so.
- Melb PC may make and keep any record it requires for the purpose of this agreement or the rules or for the operation of its services or as required by the law or its officers.
- The subscriber must not transfer, sell or share internet access rights, or allow the account to be used by any other person, other than those Melb PC Family Members who are listed on this application and have paid the relevant charges.
- The user's last name must be displayed in all e-mail and news messages. The user's first name or initials may be displayed as desired.
- Commercial traffic, in the form of private messages and advertisements in newsgroups designated for that purpose, is permitted within the bounds of Net etiquette.
- The 'Organisation' field in private email or public newsgroup article headers must always be Melbourne PC User Group Australia, the name of the service provider. Any other organisation or business name is permitted only in the four-line (maximum) "signature" text that is optionally inserted at the end of the message or article.
- The "From" field used in email and news messages may be the Melb PC assigned email address. e.g. jjones@melbpc.org.au or a "Spam-trap" address, e.g. jjones@notspam.org.au or, subject to Clause 22 an external address. e.g. jones@hotmail.com.
- Melb PC may assign its rights and obligations to full Internet Subscribers under this agreement to an Internet access provider that is of equal standard to Melb PC and after notice of assignment is given to the subscriber, this agreement shall have operation as if it had been entered into between the assignee and the subscriber and Melb PC's rights (except for its right to recover any money owed to it immediately before the assignment) and obligations under this agreement shall be at an end. Services to Associate internet Subscribers shall be limited to the period Melb PC is able to provide them from its own resources.
- The parties submit to the law of Victoria, Australia in relation to any the interpretation of this agreement, or any dispute arising out of it.
- To the extent permitted by law and except as expressly provided to the contrary in this Agreement, all warranties whether express, implied, statutory or otherwise, relating in any way to the subject matter of this Agreement or to this Agreement generally, are excluded Where legislation implies in this Agreement any condition, or warranty and that legislation avoids or prohibits provisions in a contract excluding or modifying the application of or the exercise of or facility under such term, such term shall be deemed to be included in this Agreement. However, the liability of Melb PC for any breach of such term shall be limited at the option of Melb PC, to any one or more of the following if the breach related to goods, the replacement of the goods or the supply of equivalent goods; the repair of such goods; the payment of the cost of replacing the goods or of acquiring equivalent goods, or the payment of the cost of having the goods repaired; and if the breach relates to services the supplying of the services again; or the payment of the cost of having the services supplied again. To the extent permitted by law and except as expressly provided to the contrary in this Agreement Melb PC shall not be under any liability (contractual, tortious or otherwise!) to subscriber in respect of any loss or damage (save for only personal injury and death) howsoever caused, which may be suffered or injured or which may arise directly or indirectly in respect to the supply of goods or services pursuant to this Agreement or the act, failure or omission of Melb PC.
- Accounts may be suspended without notice to stop transmission of network packets that threaten or have the potential to threaten the security or normal operation of any computer or device on the local or wider network. Such packets are categorised solely by the Internet Management Subcommittee. Users of accounts suspended without notice will be advised by telephone or writing within two working days of the nature of the packets originating from their account. Lifting of the suspension will require the registered account holder to provide evidence of confirmed action being taken to prevent further the transmission of such threatening or potentially threatening packets.
- The Description of Service "Internet Access Agreement" and the services as described on this application form constitute the entire agreement between the partner and neither of them relies on any term, condition, warranty, collateral contract, representation or promise not set out in those parts of these forms.
- Authorised by Melb PC Committee, 1st September 2013

I have read the terms and conditions

signed.....dated.....

Melbourne PC User Group Monthly Meeting

Wednesday, 3 September at 7pm

COMMUNICATIONS

In our series of presentations showcasing activity in our SIGs, Philip Lew is hosting a session on Communications, promising insights into the early history of communications in our club as well as revelations about current and future developments.

OTHER OPERATING SYSTEMS

After the interval, in our series on non-Windows operating systems, Colin Lampshire, Convener of our Android SIG, will round off our series on other operating systems and introduce us to his new Android tablet.

WAFFLE @ FONG

Supper or coffee after the meeting: FONG's Chinese Restaurant, 725 Centre Rd Bentleigh East, Cnr of Francesco St, Melway: 77 J1

MELBOURNE PC USER GROUP INC.

Headquarters: Suite 26 Level 1, 479 Warrigal Road Moorabbin (Corner Cochranes Rd) Melway: 78 D8
In the evening there is lift access to the 1st floor from the carpark. ♿

Public transport users can take Smart Bus 903 from several train stations. The closest are:

- Mentone station on the Frankston Line (5 minutes away).
- Oakleigh Station on the Pakenham/Cranbourne line (10 minutes away).



Other ways to access the monthly meeting

Live Streaming

The Monthly Meeting is streamed live over the Internet at: <http://tv.mpcug.mobi>. The streaming runs from 7-9 pm with a break of around 20 minutes in the middle.

Download

Members may also download videos of the meetings at: <https://websec.melbpc.org.au/videos/>. Use your Melb PC username and password to access them.

On Disc

Members may purchase videos of each meeting on disc for \$3 each (\$4 with postage) or \$44 for an 11-issue subscription (postage included). Pick up from monthly/SIG meetings or Melb PC office. Subscription form on [Page 40](#).



Meetings In September 2014

js14

Sunday	Monday	Tuesday	Wednesday	Thursday	Friday	Saturday
	1	2 North East Genealogy (10am - 12.45pm)	3 Monthly Meeting Melb PC H.Q. Moorabbin 7pm sharp	4 Ballarat (7.30pm - 9.45pm) Sunbury Daytime (New Users 9.30am)	5 Essendon (Main Meeting 9.30am) Multimedia and Home Entertainment (Wadham House 10am)	6
7 East Workshop (Wadham House Mt Waverley 10am - 2pm)	8 Access (6.30pm - 8.30pm) Wyndham (General 7.30pm - 9.30pm)	9 WASINT (10.30am - 12.30pm) Everything Apple (2pm - 4pm) Linux Workshop (4pm - 7pm) Linux (7pm - 9.30pm)	10 Video Production (Sony Vegas 10am) Communications (7pm - 9.30pm) Microcontroller (7pm - 9.30pm) East (7.30pm - 10pm)	11 E-Book (7pm - 9.30pm) North East Daytime (Includes Photography - Digital Imaging Ivanhoe 10am - 12noon) Sunbury Daytime (New Users 9.30am)	12 Casey PC (Narre Warren Library 12.30pm - 3pm) Essendon (Open Forum 9.30am) Hardware (Wadham House 10am) Deadline for October Newsletter Articles and SIG Reports.	13 Microcontroller Workshop (12noon - 5pm)
14 MACE (10am - 2pm) Beginners East (10am - 12.30pm) Genealogy (1pm - 3.30pm) Macedon Ranges (Gisborne 2pm - 4pm)	15 Graphics (7pm - 9.30pm) Nth Subs Linux (7.30pm - 9.30pm) Mornington Peninsula (Meeting 9.30am Digital Imaging Group 12.30pm Family History Group 2pm)	16 Wyndham (Multimedia 7.30pm)	17 Everything iPad / iPhone (2pm - 4pm) North East Android (Ivanhoe 10am - 12noon)	18 Music (7.30pm - 9.30pm) Bayside (10am - 12 noon) Sunbury Daytime (General Meeting 9.30am)	19 Essendon (Check website for meeting details. 9.30am) Photoshop (Digital Images Wadham House 10am)	20 Windows 7 & 8 (Windows 7. 10am - 12noon Windows 8. 1pm - 3pm)
21 Website Design (2pm - 6pm)	22 Video Inner East (Balwyn 7pm - 9.30pm)	23 Programming (6.30pm - 9pm) North East (Evening 7.30pm - 9.30pm) Yarra Ranges (Meeting 9.15am Workshop 11.30am)	24 Video Production (Pinnacle 9.30am) Essendon (7pm - 9pm)	25 Sunbury Daytime (Maintenance 9.30am. Meeting also held on a 5th Thursday)	26 Casey Workshop (Narre Warren Library 12.30pm - 3pm) Essendon (Check website for Meeting Details 9.30am) Raspberry Pi (Wadham House 10am)	27 Hardware Workshop (10am - 12noon) Microcontroller Workshop (12noon - 5pm)
28	29	30	<div> <div> Colour Codes Black: SIG meetings at Melb PC H.Q. Moorabbin. Blue: SIG meetings held at other locations. Dotted Box: No SIG meeting held this month. </div> <div> Have A Question Post it on a Newsgroup http://groups.melbpc.org.au/~anywhere/ </div> </div> <p>For information on "Special Interest Group" activities and meeting times see the group details in PC Update or go to http://groups.melbpc.org.au</p>			